

BHL95

COMFORT EFFICIENT EPTOME VALUES

QUALITY **NEW MASTERPIECE**
CHANGES THE WORLD



Loader And Excavator Bucket Capacity

1.0 m³ 0.2 m³

Operating Weight

9200 kg

Dig Depth

5366 mm

Net Power

74 kW

KEY FEATURES

4 WD Powershift Transmission with Limited Slip Differential and Drive Shaft Guard, Ride control, Joystick FNR, Kick down Clutch switch

Load Sensing Hydraulic with Pilot Controls and ISO/SAE Pattern Change

Boom Float, Return to Dig, and Auxiliary Line with 2 way switch

Eight LED Working Lights, Rotating Beacon, Traffic Lights, Air Suspension Seats, and bluetooth

Extendible stick, 4 in 1 bucket, electric control and flow adjustable

DIMENSIONS

TECHNICAL SPECIFICATIONS

Operating Weight	9200 kg
Engine	Cummins QSF3.8 T3
Displacement	3.8 L
Gross Power	74 kW @ 2200 rpm
Net Power	70.8 kW @ 2200 rpm
Maximum Torque	420 Nm @ 1600 rpm
Transmission	ZF 4WD — 4 Speed Forward/Reverse
Speed Gear 1	4.8 km/hr
Speed Gear 2	9.6 km/hr
Speed Gear 3	19.3 km/hr
Speed Gear 4	35.4 km/hr
Hydraulics	Load Sensing with Pilot Controls
Main Hydraulic Pump	Kawasaki Variable Displacement—Axial Piston
Hydraulic Power	39 kW @ 2,200 rpm
System Flow	156 l/min
Operating Pressure	24.9 MPa
One-way Aux Line Max Flow	max 140 l/min
One-way Aux Line Max Pressure	16 MPa

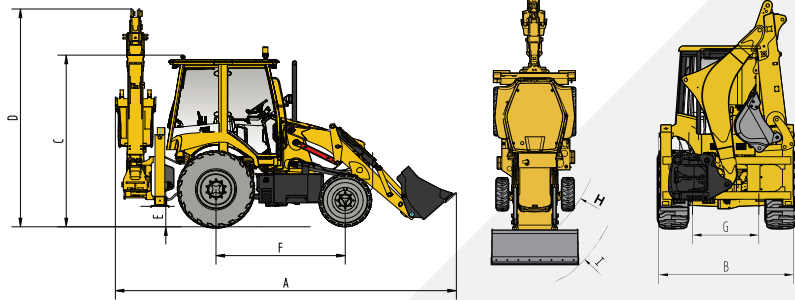
DIMENSIONS

A Overall Length, Transport	5920 mm
B Overall Width, Transport	2280 mm
C Cab Roof Height	3129 mm
D Transport Height	3732 mm
E Ground Clearance	320 mm
F Length from Axle to Axle	2245 mm
G Total kingpost travel	1100 mm
H Turning Radius, Front Tires	4240 mm
I Turning Radius, Front Bucket	4800 mm

SERVICE REFILL CAPACITIES

Fuel Tank Capacity	140.0 L
DEF Tank Capacity	10.0 L
Hydraulic Oil Capacity	120.0 L
Engine Oil Capacity	8.5 L
Cooling System Capacity	22.0 L
Gear Box Oil Capacity	18.0 L

*Based on theoretical calculation at max ow with no load. Subject to alterations. In the interest of continual equipment development, SANY Group Inc. reserves the right to change these specifications at any time without prior notification.

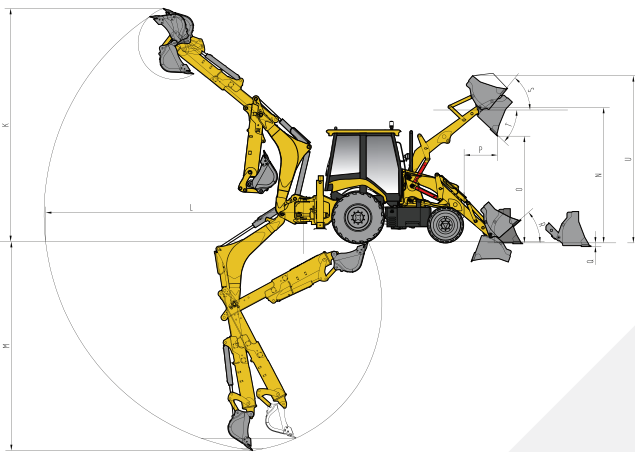


WORKING RANGE

K Maximum Digging Height	5985 mm
L Maximum Reach from Center of Swing Pivot	6644 mm
M Maximum Digging Depth	5366 mm
N Maximum Height to Bucket Hinge Pin	3478 mm
O Dump Clearance	>2700 mm
P Reach at Dump Position	>730 mm
Q Maximum Digging Depth with Bucket Levelled	88 mm
R Bucket Rollback Angle @ Ground Level	40°
S Bucket Rollback Angle @ Full Height	51°
T Loader Dump Angle @ Full Height	44°
U Maximum Operating Height	4293 mm

DIGGING PERFORMANCE

Bucket Breakout Force—Excavator	55 kN
Bucket Breakout Force—Loader	50 kN

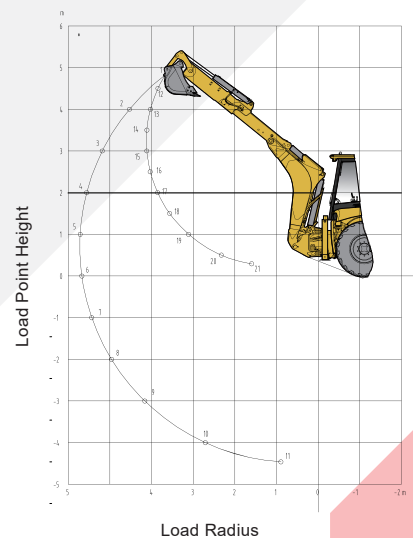


LIFTING FORCE

	POSITION	IMPERIAL	METRIC
Boom lifting value	1	1,265 lbs	574 kg
	2	1,541 lbs	699 kg
	3	1,613 lbs	732 kg
	4	1,449 lbs	657 kg
	5	1,542 lbs	699 kg
	6	1,482 lbs	672 kg
	7	1,427 lbs	647 kg
	8	1,390 lbs	631 kg
	9	1,399 lbs	635 kg
	10	1,691 lbs	767 kg
Stick lifting value	12	1,458 lbs	662kg
	13	1,946 lbs	883kg
	14	2,534 lbs	1,150kg
	15	2,939 lbs	1,333 kg
	16	3,260 lbs	1,479 kg
	17	3,550 lbs	1,610 kg
	18	3,862 lbs	1,752 kg
	19	4,273 lbs	1,938 kg
	20	4,984 lbs	2,261 kg
Overflow value	11	1,694 lbs	100 kg
	21	7,230 lbs	3,280 kg

* Indicates load limited by hydraulic lifting capacity.

In the interest of continual equipment development, SANY Group Inc. reserves the right to change these specifications at any time without prior notification.



Load Radius

SANY Group Inc. Dongcheng Road
SANY Industrial Park, Kunshan, China
<http://www.sanygroup.com>



Note

The documents and technical specification will be changed without further notice due to continuous technical improvement. The machine in the picture might include additional equipment.

ZJSYX0604CH (May, 2023)

Printed in CHINA