



SY215HS

Classic succession Value leader

Brand new change

Quality changes the world



Selling Points

• Engine

- 4HK1 4-cylinder, 4-cycle, water-cooled, in-line, direct injection, turbocharged & inter-cooled
- Euro 3

• Hydraulic system

- Swash-plate type duplex variable displacement piston pump, Eddie model FMP112APDTP; max. flow rate 2* 234 l/min

• Undercarriage

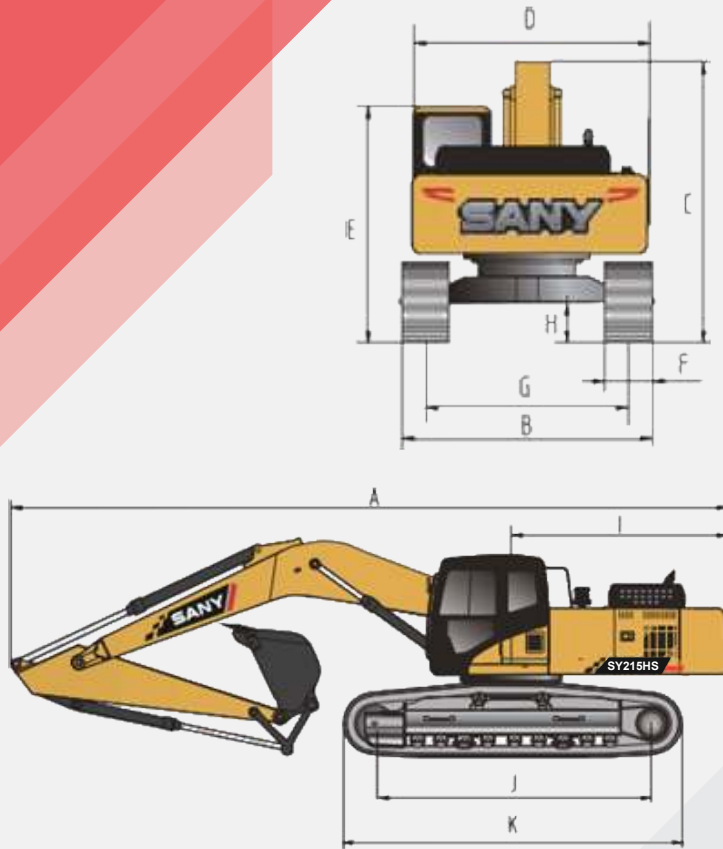
- Crawler carrier in box structure, 47 pieces of track pad on each side, 8 pieces of track roller each side, and 2 pieces of track carrier roller each side
- Dedicated heavy-duty four-wheel & one-belt is used, And the service life is doubled.

• Slewing System

- Full hydraulic drive
- Slewing motor, swash-plate type piston motor
- Double planetary gear reducer

Machine dimensions(mm)

Standard



SY215HS	
A Overall length(in transportation state)	9,680
B Overall width(in transportation state)	2,980
C Overall height(in transportation state)	3,440
D Upper width	2,875
E Overall height to cab top	3,075
F Width of Standard Track Shoe	600
G Track gauge	2,380
H Minimum ground clearance	440
I Slewing radius of tail	2,900
J Length of Track on Ground	3,445
K Crawler length	4,250
Width of undercarriage	2,980
Grouser height	26
Counterweight ground clearance	1,130
Standard Boom Length	5,700
Standard Arm Length	2,900

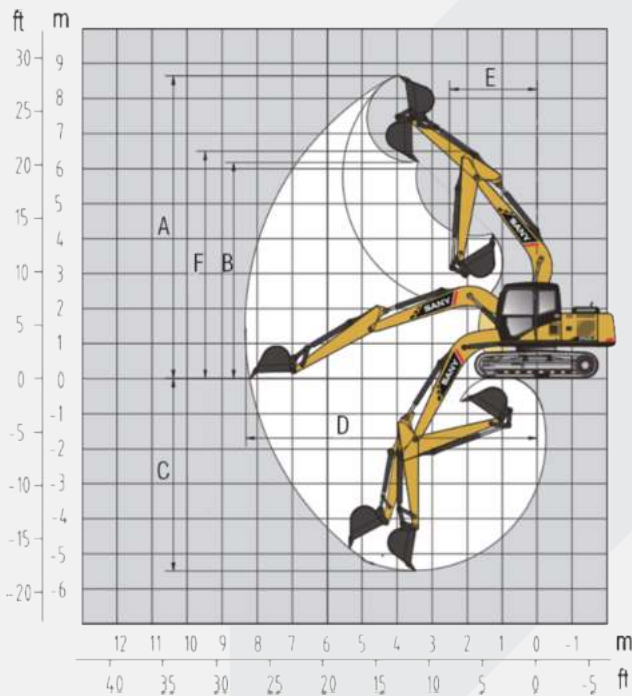
Working Performance

Standard

SY215HS	
Working weight	21,500kg
Bucket capacity	1.0 m ³
Engine model	4HK1(ISUZU)
Engine power	133kw/2000rpm
Width of track pad	600mm
Digging Force of Bucket	138kN
Digging Force of Stick	103kN

Working Scope

Standard



SY215HS	
A Max. Digging Height	9,600 mm
B Max. Dumping Height	6,730 mm
C Max. Digging Depth	6,600 mm
D Max. Digging Distance	10,280 mm
E Min. Slewing Radius	3,730 mm
F Maximum height at minimum slewing radius	7,680 mm

SANY Heavy Machinery Co., Ltd.

SANY Industrial Park, Dongcheng Avenue, Kunshan Economic & Technological Development Zone, Jiangsu Province
Post code: 215300

After-sales service hotline: 4008-28-2318
Consulting & complaint hotline: 4008-87-9318
Website: <http://www.sanygroup.com>



Note

The documents and technical specification will be changed without further notice due to continuous technical improvement.
The machine in the picture might include additional equipment.