



HZS60X10
CONCRETE BATCHING PLANT

Official Website:
www.sanyglobal.com

Contact: _____
E-mail: _____



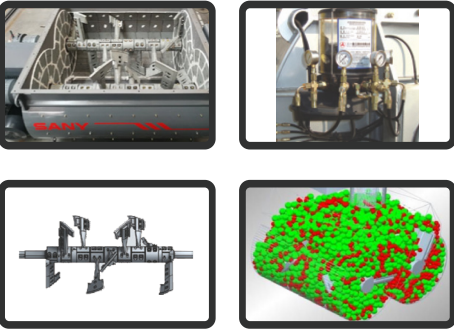
5 CORE SUPERIORITY

Compacted and flexible

- ◆ The whole compacted plant covers less area of 17m×11.5m, increasing higher utilization and exactly fitting for small and complex sites.
- ◆ It is faster and more flexible when the plant is required to be moved.

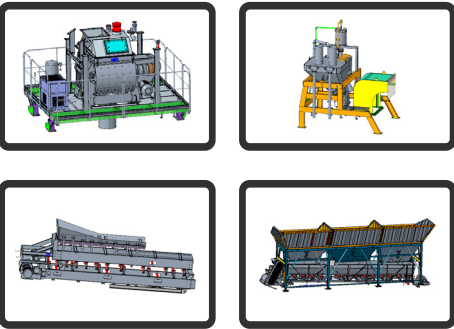
High performance mixer

- ◆ The host blades are developed according to the research results of fluid mechanics and tribology. The material is in a large range of Circulation flow, making the material boiling to get a good mixing effect.
- ◆ Continuous Production takes only 25s of mixing time for one batch, 5s less than others.
- ◆ Main drive coupling, planetary gear, spline shaft sleeve ensure higher transmission accuracy and efficiency by rigid synchronization technology.



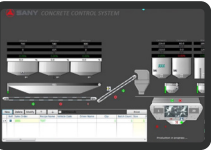
Modular design for shipping delivery

- ◆ Optimize the whole design, making the mixing layer and metering layer more compacted. Both of them can be manufactured in the factory before delivery, increasing by 15% installation efficiency.
- ◆ Only 4×40HQ shipping containers are required, decreasing by 40% shipping cost.



High precision self-adaptive measurement

- ◆ weighing parameters self-learning algorithm. Able to weigh small scale by large scale and range ability is lower from 30% to 10%.
- ◆ 1% metering accuracy and able to produce high-speed rail projects.



Intelligent operation

- ◆ Friendly man-machine operation interface, clear divisional design and animated running process.
- ◆ Easy to switch between manual and automatic mode. Able to temporarily close the discharging and feeding process.
- ◆ Automatic diagnosis of error.



TECHNICAL SPECIFICATIONS

Model	HZS60X10
Theoretical productivity	60 m³/h
Mixer	Capacity: 1 m³ Motor power: 2×18.5 kW
Metering accuracy	Aggregate:±2% Cement & Fly-ash: ±1% Water and Additive: ±1%
Aggregate bins	Max.D: Φ 60 mm Capacity: 3×10 m³
Discharging height	≥3.8 m
Silo	2×50 t
Additive tank	1×3.5 m³
Installed power	110 kW
Reference weight (t)	40

Remarks:
When assessing the dynamic accuracy of concrete materials, the batching amount shall be between 30% and 100% of full measuring range of corresponding batch weigher in accordance with national standards.