



## Versatile machine with good adaptability

- ◆ The overall height of the machine is less than 2.2m, allowing for milling in underground parking garages;
- ◆ Milling radius  $\leq 0.325\text{m}$ , flexible transfer, convenient for milling around the manhole cover and corners;
- ◆ Remote control construction: convenient for getting off the vehicle in a narrow space, allowing operators to avoid dust and operating vibration (optional);
- ◆ Milling drum can be customized: milling width: 200–500 mm (optional); tool tip distance: 4–15 mm (optional).
- ◆ Complete accessories: 0.2m/0.5m milling drum and edge wheel for rumble strip can be quickly replaced, suitable for milling under working conditions such as markings, rumble strips, well covers and grooves.

**C10 Series**



## SANY HEAVY INDUSTRY CO., LTD.

Sany Industrial City, Changsha Economic and Technological Development Zone, Hunan Province, China  
Zip: 410100  
Fax: 0086-731-85835199 Enquiry and Complaint Telephone: 0086-4006098318

Warm reminder:  
As the technology is constantly updated, technical parameters and configurations are subject to change without prior notice.  
The machine on the picture may include additional equipment, this album is for reference only, subject to the actual.  
The copyright belongs to SANY Heavy Industry, and no part of this catalog may be reproduced or copied for any purpose without SANY Heavy Industry's written permission.

© China print Apr. 2025 edition



Scan the QR code to follow  
the WeChat Official Account of  
SANY Road Machinery

V 20250409

**SANY**<sup>®</sup>

## SPECIFICATION



## Milling Machine SCM500C-10H3 SCM505C-10H3

QUALITY CHANGES THE WORLD

[www.sanyglobal.com](http://www.sanyglobal.com)

## Product Highlights

The main features are "low fuel consumption", "labor saving" and "good adaptability". It can shuttle like an elf in municipal construction, high-speed trimming, underground garages and other milling sites

### Automatic milling, low fuel consumption

- ◆ With the innovative load adaptive control system, the engine speed is automatically adjusted with the load. The engine always works in the low fuel consumption area under the stepless milling energy-saving mode, and the comprehensive fuel consumption is 16.3% lower than that of the industry average<sup>(\*)</sup>;
- ◆ Automatic standby: Identify working conditions such as waiting for material truck and standby, automatically idle and suspend corresponding actions such as conveying, sprinkling water and milling drum to achieve energy saving and noise reduction;
- ◆ Transition: The engine speed is automatically adjusted with the travel speed, not a fixed three-gear speed, which reduces power loss and thus fuel consumption.

### Side discharge, labor saving

- ◆ The innovative material guide tailgate for side discharging: With directional discharge of milling materials, it requires no auxiliary worker to clean residue materials, and reduces more than 2 auxiliary workers;
- ◆ Tire travelling path not affected by residue materials; more accurate leveling; flatter milling under the same working condition.



Note\*: When milling 3cm asphalt in automatic transmission mode, the system achieves a volume fuel consumption of 2.08L/m<sup>3</sup>, outperforming the industry average (based on 3-gear manual milling) by 17.16% higher milling efficiency and 29.49% lower fuel use;  
When milling 6cm asphalt, the automatic transmission mode has a volume fuel consumption of 1.61L/m<sup>3</sup>, outperforming the industry average (based on 3-gear manual milling) by 3.11% higher milling efficiency and 10.06% lower fuel use.

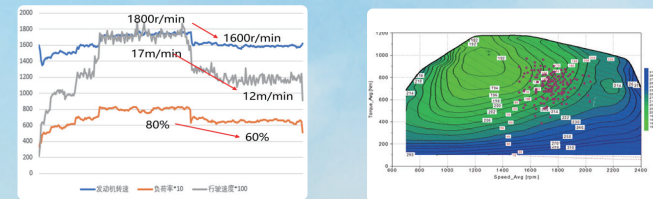


## SCM500/505C-10H3

## Milling machine C10 Series

## "Automatic milling" technology

- ◆ The pioneering load self-adaptive control system can adaptively adjust the engine speed and operating speed according to the hardness and load of the milled road surface, so that the output power of the engine is always in the high-efficiency zone, reducing energy consumption and improving production efficiency;
- ◆ Automatic standby: Identify working conditions such as waiting for material truck and standby, automatically idle and suspend corresponding actions such as conveying, sprinkling water and milling drum to achieve energy saving and noise reduction;
- ◆ Fuel saving during transition: During transition, the engine speed is automatically adjusted with the travel speed, not a fixed three-gear speed, which reduces power loss and thus fuel consumption;
- ◆ Patent No.: 202211296017.7; 202211296791.8



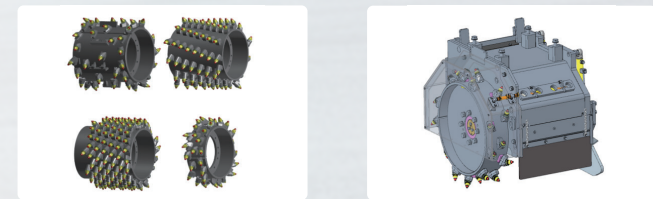
## Side discharging technology

- ◆ It realizes the directional discharge of milling materials and reduces the labor cost for cleaning road surface materials. Tires will not press against floating materials, greatly improving the milling flatness;
- ◆ Patent No.: 201910448007.2



## Serialization of 0.5m milling drum

- ◆ Milling drum can be customized: milling width: 200–500 mm (customizable); tool tip distance: 4–15 mm (customizable);
- ◆ Complete accessories: milling drum and edge wheel for rumble strip can be quickly replaced, suitable for milling under working conditions such as markings, rumble strips, well covers and grooves.



## Intelligent control technology

- ◆ The large touch screen digitally displays the milling depth, and intelligent designs such as one-button cutting, one-button obstacle crossing and three-gear milling depth reduce operations;
- ◆ Brand-new operating system + combined handle, simplifying operation and night backlight function, convenient for construction at night;
- ◆ Self-adaptive engine power: safe "push joystick"
- ◆ Travel system protection function: travel safety, avoiding rollover, adding proximity switches, detecting the position of the right rear outrigger, and limiting the driving speed and steering angle when the right rear outrigger is in front;
- ◆ Ground milling depth control: The milling depth can be adjusted when the tailgate is closed, and the forward and backward slow rotation of the milling drum can be controlled when the tailgate is opened to facilitate tool change;
- ◆ Water level alarm: When the water level is too low, it prompts to add water and automatically turns off the pump to protect the pump from being damaged due to dry running without water;
- ◆ Steplessly adjustable sprinkling amount: The flow of the sprinkler pump is increased from 4.7 L/min to 6.8 L/min, and the water volume can be steplessly adjusted;
- ◆ Self-diagnosis: control button on/off, current and voltage can be visualized for easy inspection, monitoring and maintenance; intelligent prompt of maintenance information, fault alarm information, milling volume statistics, etc.
- ◆ "Guide me home" function: There is lighting when climbing up and down the ladder at night, equipped with a remote control key to power on and off the ground;
- ◆ Relying on SANY remote platform, the user can keep up with construction quantity statistics, fault diagnosis, maintenance and equipment dynamics at any time.



## Remote milling technology

- ◆ Remote control construction: remote control is optional. Construction can be remotely controlled after people get off the machine, avoiding dust and vibration, and improving the working environment;
- ◆ Complete machine height <2.2m: perfectly suitable for milling of underground garages and residential buildings;
- ◆ Large steering angle of front wheel: convenient for milling around the manhole cover and corners.

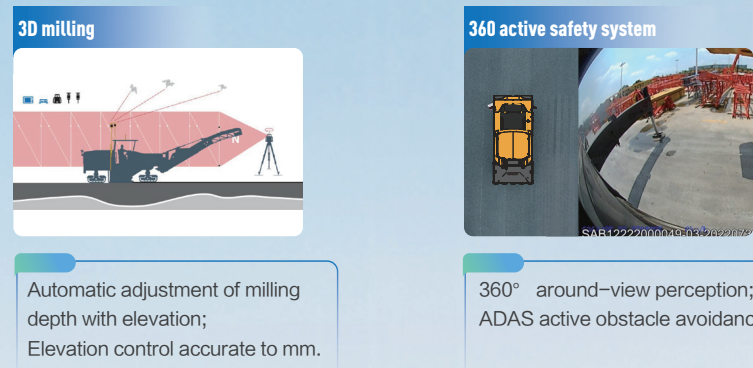


## Product optional configuration

Item	Brand
Conveyor assembly	SANY customization
Conveying motor	SANY customization
Electric canopy	SANY customization
0.2, 0.4 and 0.5m fine milling drum	SANY customization
Guide tailgate	SANY customization
Remote Controller	SANY customization

\*:The above configuration needs to be priced separately.

## Smart supporting facilities and services



## Economic value analysis

Category	Technical support	Value calculation	Remarks
Labor saving	Guide tailgate	2 auxiliary workers for material cleaning can be reduced based on 120 machine-shifts and RMB 200/machine-shift for each auxiliary worker	Total: additional annual income of RMB 54,000!
Fuel-efficient	Power self-adaptive, three-gear milting	The comprehensive fuel consumption is 15 liters/hour, saving 10% of fuel. 120 shifts are calculated as 500 hours, and the oil price is RMB 8/liter, saving RMB 6,000 in fuel per year.	

## Operating Environment

- ◆ Standard normal temperature battery, start intake preheating (can be used in an environment above  $-10^{\circ}\text{C}$ );
- ◆ If the temperature is lower than  $-20^{\circ}\text{C}$ , an ultra-low temperature preheating system shall be added. Please contact SANY technicians.



## Product Parameters

### ◆ Overall dimensions

The following are measured values under standard configurations. Actual dimensions may vary depending on selected options.



Item	SCM500C-10H3	Item	SCM500C-10H3
Engine manufacturer	SDEC	Conveying speed (m/min)	3.8-4.7
Engine model	SC4H130G3	Belt width (mm)	400
Emission standard	China III	Maximum dumping height (mm)	2900
Maximum power of engine (kW)	95.6	Conveying swing angle (°)	Left 25, right 20
Milling width (mm)	500	Transportation weight (t)	7.3
Depth of washing and milling (mm)	0~180	Maximum total operation quantity (t)	7.8
Diameter of tool tip circle (mm)	670	Transportation height (mm)	2455
Cutter spacing (mm)	15	Transportation width (mm)	1975
Number of tool bit (Nr.)	54	Fuel Tank Capacity (L)	160
Travel and working speed (km/h)	0~8	Water tank (L)	340
Ground clearance of milling drum (mm)	200	Hydraulic oil tank (L)	70
Minimum milling radius (mm)	0.325	Combined Fuel Consumption (L/h)	9.34
Tire width (mm)	203	External radiation noise	79
Hill-holding slope gradient	40%		