

TRUCK-MOUNTED CONCRETE PUMP SYM5552THB 710SA



Highly Reliable

- SANY has World-class lighthouse factories with top-level manufacturing capability, assuring reliable quality.
- Careful matching of components ensures stable performance of the whole machine.



Strong Pumping

- Single-button high/low pressure switch
- Multiple upgrades assure high suction rate
- Significant advantage in pumping efficiency



Extremely Economical

- The industry-leading longest service life of wear parts
- Advanced fuel combustion technology
- Targeted upgrades for different working conditions

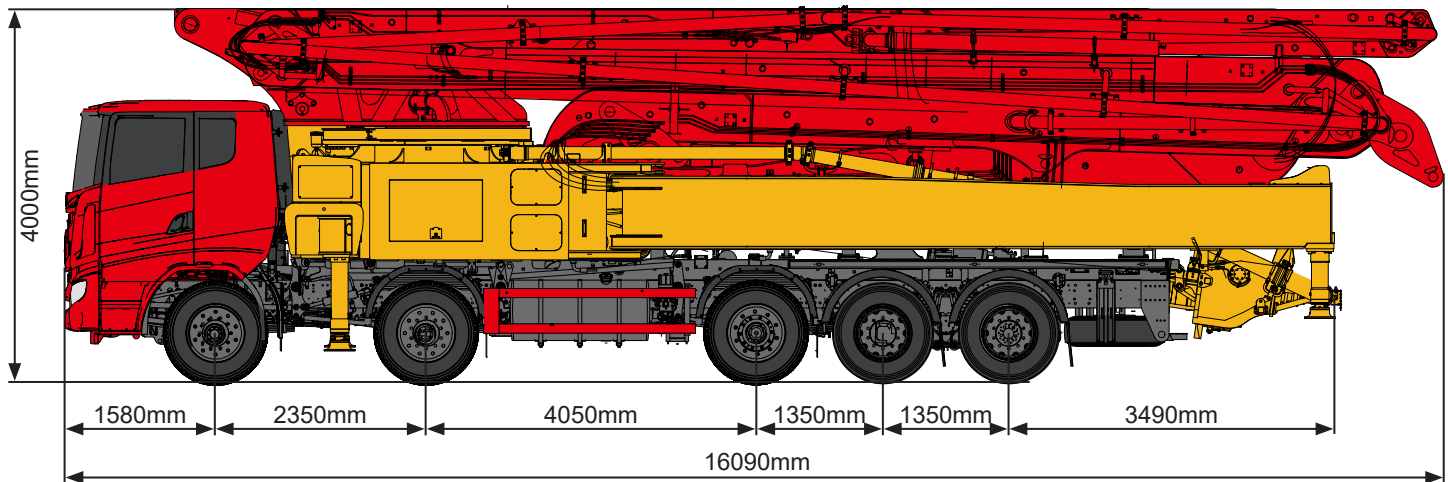


Ultimate User Experience

- Comfortable cab comparable to passenger car experience
- Multi-language human-machine interface
- Easy-maintenance



TECHNICAL SPECIFICATION



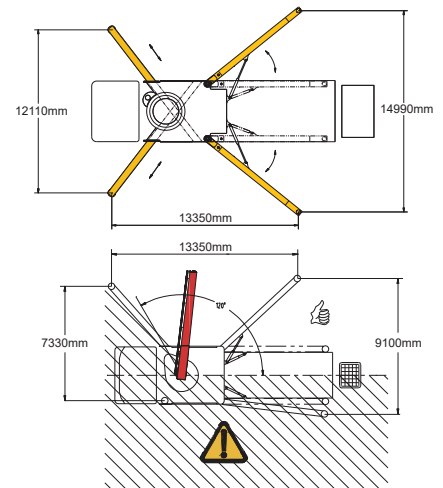
TECHNICAL DATA

Boom

Vertical reach	70.2 m
Horizontal reach	63.5 m
Depth reach	50.3+3 m
Unfolded reach	16.9 m
Rotation	± 360 °
Front outrigger spread L-R	12110 mm
Rear outrigger spread L-R	14990 mm
End hose length	3 m
End hose diameter	125 mm
Pipeline size	125 mm

Pumping system

Theoretical output	180 m³/h (125 m³/h)
Theoretical pressure	8.3 MPa (12 MPa)
Delivery cylinder diameter	260 mm
Stroke length	2100 mm
Hydraulic system	Open
Hydraulic system oil pressure	32 MPa
Oil tank capacity	960 L
Water tank capacity	750+750 L
Drive pump	Danfoss
Volume of hopper	750 L



DELIVERY & CONFIGURATIONS

Chassis

Brand: SANY
Model: SYM5551THB1F
Engine type: D13C6-530E3
Engine max net power: 390/1900 kW/rpm
Emission standard: China VI
Capacity of fuel tank: 600 L
Displacement: 12.94 L
Max.speed: 90 km/h

Functions

2-way rotation agitator
Single-button to complete the double pistons exit action
Single-button high/low pressure switch
Auto-lubrication for core pump

Safety

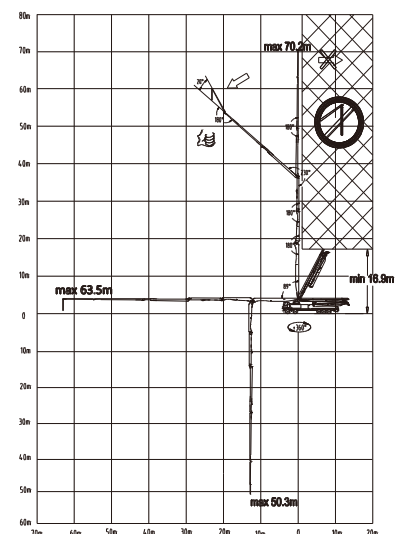
Mushroom head push button for horn, yellow
Emergency stop
Hopper lid

Cleaning

Sponge balls
Large-flow water pump

Others

Industrial display control screen 12.6"
Operation manual
MachineLink+ APP/web connected
7 × 24 worry-free service



www.sanyglobal.com

SANY Industrial Park, Economic and Technological Development Zone,
Changsha, Hunan, China, 410100
Sales Hotline
Tel: 0086-731-85835199
Mail: sales@sanyglobal.com

Service Hotline
Tel: 0086-4006098318
Mail: CRD@sany.com.cn

The product configuration (including technical parameters) is subject to change and the delivered actual machine without notice.