

Highly adaptable

- ◆ Maximum milling depth: 280 mm. Deep milling can be completed in a single pass.
- ◆ The widened front wheel track allows easy loading and unloading from standard flat car without requiring a crane.
- ◆ Minimum milling radius ≤ 0.9 m, offering excellent maneuverability even for operations in confined areas.
- ◆ Conveyor discharge height: 4.5 m, compatible with rear eight-wheel trucks for coordinated operation.

Energy Efficient & Environmentally Friendly

- ◆ The SYMC intelligent controller is equipped with a standard automatic leveling system, which utilizes a digital hydraulic cylinder to detect milling depth and achieve high-precision leveling.
- ◆ It automatically adjusts engine speed during transitions to reduce energy consumption and fuel usage.
- ◆ It also provides intelligent alerts for maintenance, fault diagnostics, and milling volume tracking.
- ◆ Spray nozzles added at the conveyor discharge end effectively reduce secondary dust, improving dust suppression efficiency by 20%.



CBS系列



SANY HEAVY INDUSTRY CO., LTD.

Sany Industrial City, Changsha Economic and Technological Development Zone, Hunan Province, China
Zip: 410100
Fax: 0086-731-85835199 Enquiry and Complaint Telephone: 0086-4006098318

Warm reminder:
As the technology is constantly updated, technical parameters and configurations are subject to change without prior notice.
The machine on the picture may include additional equipment, this album is for reference only, subject to the actual.
The copyright belongs to SANY Heavy Industry, and no part of this catalog may be reproduced or copied for any purpose without SANY Heavy Industry's written permission.

© China print Apr. 2025 edition



Scan the QR code to follow
the WeChat Official Account of
SANY Road Machinery

V 20250409

SANY®

SPECIFICATION



Milling Machine SCM1300C-8S

QUALITY CHANGES THE WORLD

www.sanyglobal.com

Product Highlights

SCM1300C-8S is a versatile 1.3-meter-class medium milling machine that balances milling performance and flexibility. It is suitable for municipal roads, national and provincial highways, and supports asphalt milling, cement surface texturing, and cement-stabilized base milling.

Heavy-Duty & High Efficiency

- ◆ The 200 kW high-power engine drives a mechanically transmitted milling drum, delivering more direct power transmission and strong overload resistance.
- ◆ Maximum operating weight of 16.35 t ensures stable milling on hard surfaces without bouncing.
- ◆ Travel speed of 8 km/h and working speed of 35 m/min delivers higher efficiency during both transport and milling operations.
- ◆ Second-generation 18 mm milling drum features optimized auger helix angle and arrangement to enhance material collection capacity and reduce cutting resistance.

Economical & Reliable

- ◆ Upgraded large-diameter tires with a service life exceeding 1,000 hours.
- ◆ Alloy tailgate scraper ensures clean material collection and extended durability.
- ◆ Milling toolholders embedded with wear-resistant alloy offer a service life of $\geq 2,000$ hours.
- ◆ The side sliding plates are fitted with wear-resistant shoes for enhanced durability.



SCM1300C-8S

Milling machine
CBS Series

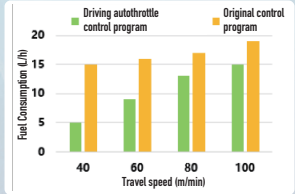
High-precision automatic leveling

- ◆ The high-precision automatic leveling system is standard and fully integrated with the machine's control system, allowing for easy and efficient leveling operations.
- ◆ An optional high-precision fast cross slope sensor is available.



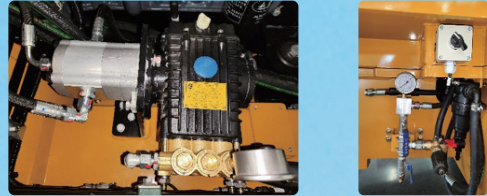
Condition-adaptive technology

- ◆ It automatically adjusts engine speed during transitions to reduce energy consumption and fuel usage.
- ◆ Based on real-time operating conditions, the system intelligently adjusts engine power, speed, and torque to maintain optimal performance and reduce fuel consumption.



Intelligent sprinkler technology

- ◆ Water output can be automatically adjusted based on workload or manually controlled, effectively reducing dust, cooling the milling drum, conserving water, and extending operational endurance.
- ◆ High-pressure flushing function is available, with flushing pressure exceeding 40 bar.



High-efficiency milling system

- ◆ Mechanically driven milling drum delivers 20% higher power transmission efficiency than hydraulic drive systems and provides strong overload resistance.
- ◆ The second-generation milling drum, with 18 mm tool spacing, incorporates an optimized helix angle and tool arrangement to minimize cutting resistance and improve material collection capacity.



Multi-level intelligent outrigger control

- ◆ The system intelligently detects the swing position of the right rear outrigger and adjusts the lifting speed in multiple stages accordingly. Regardless of the right outrigger's position, perfect synchronization between the left and right outriggers is maintained, resulting in more precise milling and leveling control and safer machine operation.

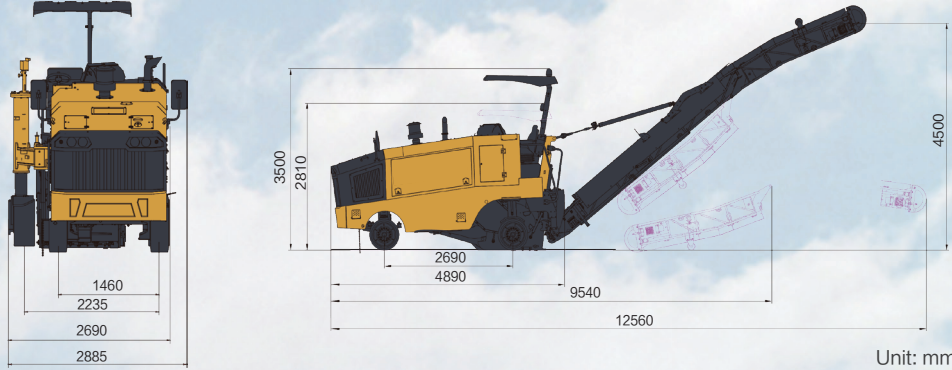


Operating environment

- ◆ The standard configuration includes an intake air preheating system and a normal-temperature battery, allowing reliable operation at ambient temperatures down to -20° C.
- ◆ For environments below -20° C, an ultra-low temperature preheating system is required. Please contact SANY technical support.

Product Parameters

- ◆ **Overall dimensions**
The following measurements are based on standard configurations. Actual dimensions may vary depending on selected options.



Item		SCM1300C-8S
Engine	Manufacturer / Model	SANY D09
	Rated power	200kW/2200rpm
Operating performance	Milling width (mm)	1300
	Milling depth (mm)	0~280
Milling drum	Tool tip circle diameter (mm)	930
	Cutter spacing (mm)	18
weight	Transport weight (t)	15.2
	Maximum operating weight (t)	16.35
Travel system	Travel speed (m/min)	0~133 (0~8km/h)
	Working speed (m/min)	0~35
	Minimum milling radius (m)	≤0.9
Conveying system	Belt width (mm)	500
	Maximum conveying height (mm)	4500
Tank capacity	Fuel tank capacity (L)	400
	Water tank capacity (L)	800
	Hydraulic oil tank capacity (L)	120

