



Strong driving force

- ◆ Equipped with independent and robust drive systems on both sides, the track ensures excellent straight-line driving and turning performance;
- ◆ The 260 mm wide integrated track shoe, 135 mm pitch chain track, and long track with a large ground contact area and strong traction force are configured, enabling it to effortlessly push a rear eight-wheel material truck.

C10 Series



SANY HEAVY INDUSTRY CO., LTD.

Sany Industrial City, Changsha Economic and Technological Development Zone, Hunan Province, China
Zip: 410100
Fax: 0086-731-85835199 Enquiry and Complaint Telephone: 0086-4006098318

Warm reminder:
As the technology is constantly updated, technical parameters and configurations are subject to change without prior notice.
The machine on the picture may include additional equipment, this album is for reference only, subject to the actual.
The copyright belongs to SANY Heavy Industry, and no part of this catalog may be reproduced or copied for any purpose without SANY Heavy Industry's written permission.

© China print Apr. 2025 edition



Scan the QR code to follow
the WeChat Official Account of
SANY Road Machinery

V 20250409

SANY®

SPECIFICATION



Paver SAP60C-10

QUALITY CHANGES THE WORLD
www.sanyglobal.com

Product Highlights

Applies to paving construction in various road maintenance, municipal roads and community roads, highway auxiliary roads, etc.

Strong power and fast transition

- ◆ DCEC QSB4.5 (119kW/2000rpm) China III engine, with sufficient power reserve and strong power;
- ◆ Electro-hydraulic collaborative control technology, energy saving and environmental protection; the maximum speed of rabbit gear reaches 3km/h.

Flexible control and convenient construction

- ◆ The steering sensitivity is adjusted in 3 gears, and the operator can select the appropriate gear according to the use habit;
- ◆ Standard 2~3.7m symmetrical telescopic screed plate, assembled to 6m;
- ◆ Equipped with the function of heating while traveling to shorten the waiting time for construction materials.

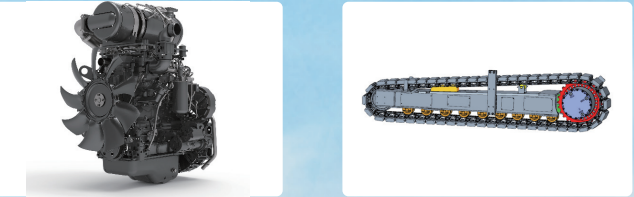


SAP60C-10

Paver
C10 Series

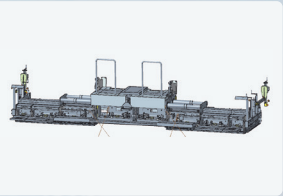
Strong power and fast transition

- ◆ DCEC QSB4.5 (119kW/2000rpm) China III engine, with sufficient power reserve and strong power;
- ◆ The maximum torque of the traveling reducer is increased to 45,000 N · m, and the maximum driving force is increased by 70%. It is equipped with 260mm-wide track shoes, 135mm pitch chain rails, and long crawlers with large ground contact areas and strong traction, making it easy to push the rear eight-wheel material truck;
- ◆ Through program optimization, the maximum travel speed of rabbit gear has been increased to 3km/h, shortening the municipal site-to-site transfer time.



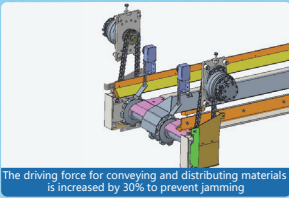
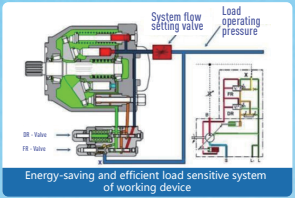
Flexible control and convenient construction

- ◆ The steering sensitivity is adjusted in 3 gears, and the appropriate gear is selected according to the operator's habits;
- ◆ Standard symmetrical telescopic screed plate, telescopic + easy to assemble, convenient for construction;
- ◆ Equipped with the function of heating while traveling to shorten the preparation time for construction materials.



Adaptive drive technology, good energy-saving effect

- ◆ The working device driven by a load-sensitive system can adjust the output according to the magnitude of the load, reducing fuel consumption;
- ◆ The driving force is increased by 30%, offering strong material conveying and distributing to meet the requirements of full-load construction.



SANY's new third-generation electronic control system

- ◆ The operation speed of the third-generation controller is increased by 40%, with more sensitive control and quick leveling response;
- ◆ With a 10-inch high-definition color touch screen, the interface operation cycle is increased by 90%, the interactive interface is more humanized, and the data display is smoother;
- ◆ The construction data is controlled by the customer in real time and pushed to the customer's cloud APP through the logistics network for visual presentation.



Product options and smart kit

Item	Description of optional parts
Balance beam	Imported/domestic
Temperature display of bottom plate	Baseboard temperature management with display and feedback for intelligent control

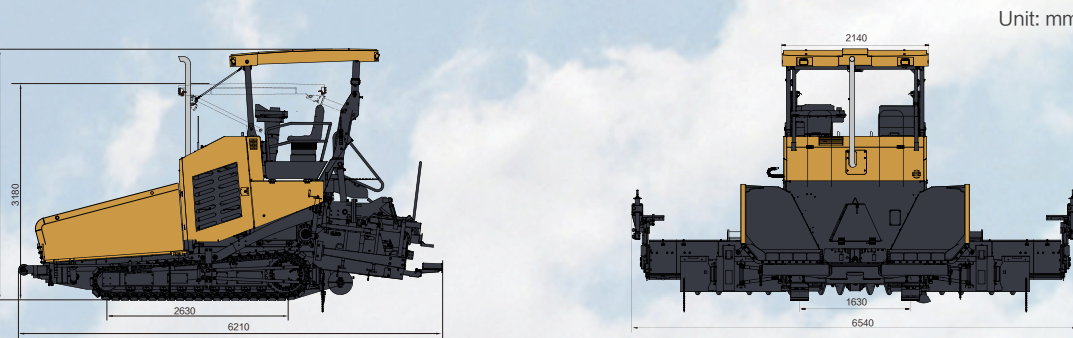
*: The above configuration needs to be priced separately.

Service environment of product

- ◆ Operating ambient temperature: +5℃~+40℃;
- ◆ Altitude: ≤1700m;
- ◆ If it is beyond the above scope of application, please contact SANY Road Machinery for consultation.

Product Parameters

- ◆ **Overall Dimensions**
The following are standard parameters, and the actual product will vary depending on the configuration.



Item	SAP60C-10
Maximum theoretical paving capacity (t/h)	450
Basic paving width (m)	Hydraulic: 2~3.7
Maximum paving width (m)	Hydraulic: 6
Maximum paving thickness (mm)	250
Engine model	DCEC QSB4.5-C160
Rated power of engine (kW/rpm)	119/2000
Maximum traveling speed (km/h)	3
Maximum operating speed (m/min)	20
Hopper capacity (m³)	6
Tamping frequency (Hz)	0~25
Vibration frequency (Hz)	0~40
Camber adjustment range (‰)	-1~3
Screed plate heating mode	Electric heating
Operating mass (kg)	16200
Transportation dimensions (L×W×H) (mm)	6210×2360×3080