

Economical and labor-saving

- ◆ Economical and labor-savingAutomatic energy saving with load-adaptive technology;
- ◆ Dual-fan independent automatic temperature control and fan speed regulation;
- ◆ Lightweight and compact design, simultaneously transportable with a sweeper, saving freight;
- ◆ The water quantity is automatically adjusted according to the load, and the sprinkling point can be switched on and off at any time to meet relevant requirements. The average sprinkling duration per tank is prolonged by 30%;
- ◆ Hard alloy metal wear-resistant gear sleeve, with service life prolonged by 50%.

Wide application

- ◆ Two independent low-noise (as low as 80dB) fans, with no disturbance to residents for works in residential areas; the pioneer dust removal with independent channel, together with multi-point sprinkling design, to reduce dust load by 98%;
- ◆ Lightweight design, properly designed center of gravity of the machine, together with counterweight at tail, to ensure proper transportation performance and small milling runout on hard pavement;
- ◆ High-speed milling with finer texture, as partial replacement of fine milling operation;
- ◆ The height of the conveying port is up to 5m, and the speed is up to 6m/s. With a large throwing range and adjustable distance, it is suitable for more material trucks.



C10 Series



SANY HEAVY INDUSTRY CO., LTD.

Sany Industrial City, Changsha Economic and Technological Development Zone, Hunan Province, China
Zip: 410100
Fax: 0086-731-85835199 Enquiry and Complaint Telephone: 0086-4006098318

Warm reminder:
As the technology is constantly updated, technical parameters and configurations are subject to change without prior notice.
The machine on the picture may include additional equipment, this album is for reference only, subject to the actual.
The copyright belongs to SANY Heavy Industry, and no part of this catalog may be reproduced or copied for any purpose without SANY Heavy Industry's written permission.

© China print Apr. 2025 edition



Scan the QR code to follow
the WeChat Official Account of
SANY Road Machinery

V 20250409

SANY®

SPECIFICATION



Milling Machine SCM2000C-10R

QUALITY CHANGES THE WORLD

www.sanyglobal.com

Product Highlights

Driving experience as automatic transmission vehicles,
with easy operation, low fuel consumption and high efficiency

Simple operation

- ◆ Lane keeping, automatic cutting, one-button milling and assisted driving;
- ◆ The first to install a 10-inch touch screen on each of the left and right sides respectively, so there is no need to move the screen for operation at left and right sides;
- ◆ All parameters including leveling parameters can be set on the main screen, so only one operator is required;
- ◆ 360° panoramic view, eliminating blind area in operation; light indication for water level, with no need for commanding;
- ◆ Quick-change design of milling drum, slow changeover tool, latchless tailgate, to realize rapid and convenient operation;
- ◆ The automatic lubrication system is equipped for all models, and the key moving parts are automatically lubricated in a reliable and labor-saving manner.

Fast and efficient

- ◆ Second generation of milling drum optimized by digital simulation, to increase the milling efficiency;
- ◆ Cummins 563kW high-power engine, to provide strong power;
- ◆ The conveying speed is up to 6m/s, the highest in the industry, with no blocking of materials in milling operation;
- ◆ The traveling speed is up to 100m/min, to realize fast transition.

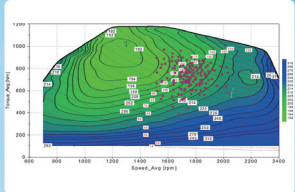


SCM2000C-10R

Milling machine
C10 Series

Condition-adaptive technology

- ◆ According to the real-time operating conditions, engine power consumption, speed and torque are controlled smartly and adaptively, so that the load rate is always optimized and the fuel consumption is reduced;
- ◆ The fan speed is automatically adjusted by temperature to reduce energy consumption;
- ◆ Electronically controlled automatic anti-skid function, to ensure stable driving operation of four tracks.



New generation of smart control system

- ◆ The third generation of smart controller, with response realized in milliseconds;
- ◆ Two 10-inch touch LCD screens, with simple operation and accurate control; leveling parameters can be set at the superstructure;
- ◆ New generation of control panel, integrating back lights and indicator lights, to facilitate works at night;
- ◆ Clear multi-color light indication for water level, to facilitate timely adding of water.



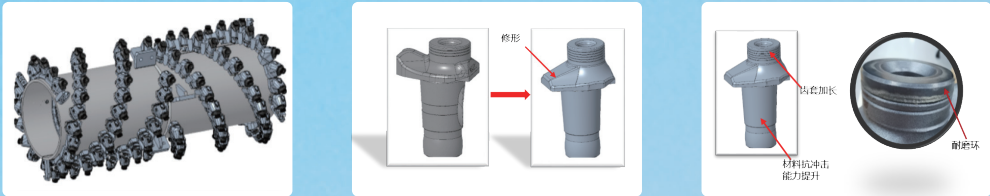
Technology of dust removal with independent channel

- ◆ The conveying cover plate is subject to a two-channel design, with the upper layer as a dust removal airflow channel and the lower layer as a milling material channel. With this design, the dust removal airflow can be prevented from blowing up the milling materials again. Together with multi-point sprinkling for dust removal, the dust can be reduced by 98%.



Efficient and wear-resistant milling drum technology

- ◆ The layout of milling drum cutter head and the gear sleeve shape are optimized by digital simulation, to increase the milling efficiency by 20%;
- ◆ Bi-metal high-strength wear-resistant gear sleeve subject to SANY's patented technology, to increase the service life by 50%.

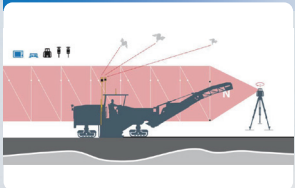


Product options and smart kit

Item	Description
360° panoramic view	Used to monitor the safety around the body
Assisted driving system	Used to reduce the operation intensity and improve the milling effect
Fine milling control system	Used for pavement finishing
2m milling drum (18mm, quick change type)	Used to quickly switch between different milling drums to meet the requirements of different construction sites
2m fine milling drum (6mm, one line and two teeth)	Used for pavement finishing
2m fine milling drum (6mm, one line and one tooth)	Used for pavement finishing

Smart supporting facilities and services

Intelligent operation system of milling machine



The milling machine automatically tracks the lane line, curbstone and milling boundary with a tracking accuracy of $\leq 3\text{cm}$;
It has three functions of assisted driving, obstacle detection alarm and milling end point reminder.

Driving assistance system



360° panoramic view;
ADAS active obstacle avoidance.

*:The above configuration needs to be priced separately.

Economic value analysis

The "automatic" milling machine can create an additional value of RMB 363,000 (200,000 + 100,000 + 40,000 +5,000) for customers every year.

Higher efficiency

- ◆ The brand new power train, together with the second generation of milling drum, can increase the milling area by 4,000m² per year compared with peers and increase the annual income by RMB 200,00.

Labor-saving

- ◆ Equipped with lane keeping, 360° panoramic view, two 10-inch screens, so 1 person for operation and command can be saved, thus saving RMB 100,000 a year.

Fuel-efficient

- ◆ Load adaptive control, together with dual-fan automatic temperature control and fan speed regulation system, can save the comprehensive fuel consumption by 5L/h than peers. Assuming the diesel fuel price of RMB 8/L and annual working time of 1,000h, the fuel cost can be saved by RMB 40,000 a year.

Accessories saved

- ◆ The automatic lubrication system is provided for all models, so that the service life of bearings, copper sleeves, keys etc. can be doubled. Assuming maintenance once every 2 years and the maintenance cost of RMB 10,000, the maintenance cost can be saved by about RMB 5,000 a year.

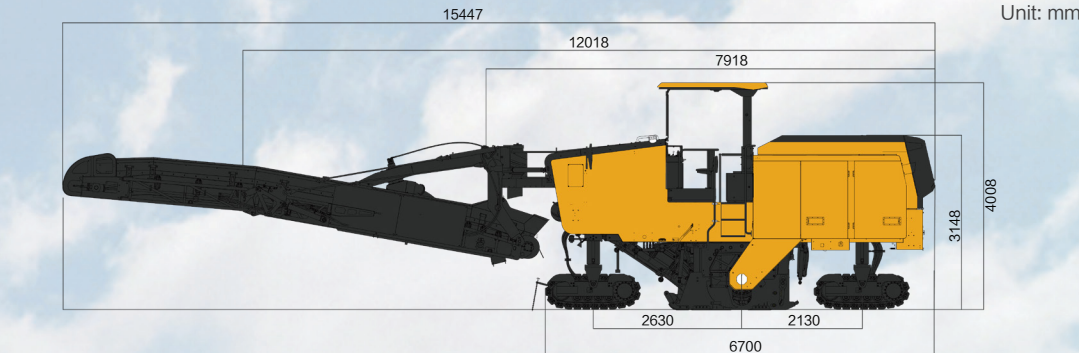
Service environment

- ◆ Altitude: $\leq 4,000\text{m}$;
- ◆ Temperature: $-10^{\circ}\text{C}\sim 45^{\circ}\text{C}$.

Product Parameters

Overall dimensions

The following are the measured values corresponding to the standard feature, and the actual products shall be subject to the optional features.



Item	SCM2000C-10R
Engine brand/model	DCEC QSM15
Emission standard	Off-road China III
Rated power (kW)	563
Transportation weight (t)	28.5
Operating mass (t)	31
Maximum operating mass (t)	33
Maximum traveling speed (km/h)	6
Maximum conveying height (m)	5
Milling depth (mm)	330
Milling width (mm)	2000
Water tank volume (L)	3400
Fuel tank volume (L)	1100
Maximum ground clearance (mm)	350
Transportation width (mm)	2550

