

**Better gradeability: better gradeability
than competitors to get more jobs**

- ◆ Optimized front and rear drive capacity and mass distribution, achieving the maximum gradeability of 65% in the industry and better adaptability to working.

**More comfortable and safer driving:
no fatigue during long-term driving**

- ◆ New generation of cambered noise reduction and vibration reduction cab (the best noise and vibration reduction performance in the industry), optimized air conditioning outlet (from up to straight), ergonomic manipulation space, making driving a pleasant experience.



C10S Series



SANY HEAVY INDUSTRY CO., LTD.

Sany Industrial City, Changsha Economic and Technological Development Zone, Hunan Province, China
Zip: 410100
Fax: 0086-731-85835199 Enquiry and Complaint Telephone: 0086-4006098318

Warm reminder:
As the technology is constantly updated, technical parameters and configurations are subject to change without prior notice.
The machine on the picture may include additional equipment, this album is for reference only, subject to the actual.
The copyright belongs to SANY Heavy Industry, and no part of this catalog may be reproduced or copied for any purpose without SANY Heavy Industry's written permission.

© China print Apr. 2025 edition



Scan the QR code to follow
the WeChat Official Account of
SANY Road Machinery

V 20250409

SANY®

SPECIFICATION



**Road roller
SSR100C-10S**
Euro III

QUALITY CHANGES THE WORLD
www.sanyglobal.com

Product Highlights

**More earnings: 10% more efficient
in road-rolling than competitors**

- ◆ High-frequency vibration and even compaction (the industry's maximum exciting force is 280kN, and amplitude uniformity <7%), achieving a compaction efficiency and quality 10% better than those of competitors.

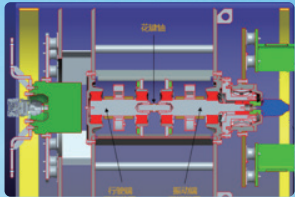


SSR100C-10S

Road roller
C10S Series

More efficient compaction

- ◆ The exciting force is 280kN (competitor: 255kN), and the compaction capacity is stronger;
- ◆ The amplitude uniformity is <7% (competitor: >8%), and the compaction quality is higher.



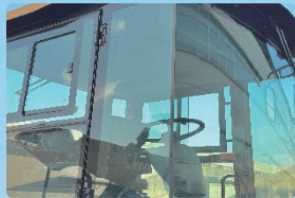
Stronger gradeability

- ◆ Reinforced mine rear axle (speed ratio increased to 64), with the theoretical gradeability improved from 53% to 65% (competitor: 53%);
- ◆ The front and rear mass distribution and the front and rear driving forces of the complete machine are optimally matched to improve the adaptability to working conditions;
- ◆ The driving force of front drums and rear tires can be adjusted separately to effectively prevent slipping of drums or tires;



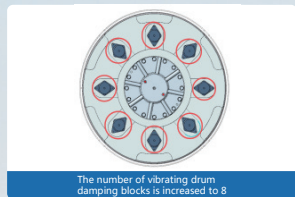
More comfortable driving experience

- ◆ The cab is certified by FOPS&ROPS, which makes it safer and more reliable;
- ◆ The new generation of noise and vibration reduction cab has a good vibration reduction effect with only 78 dB (competitor: 88.3) inside the cab, which is the best in the industry;
- ◆ Ergonomic control space, curved panoramic front windshield, unobstructed view (no A-pillar), making driving more comfortable and safer;
- ◆ High-power air conditioning system, four-wraparound air outlet in the cab (from up to straight); better air tightness. The indoor temperature can be cooled to 19.4° C (competitor: 25.1° C) within 15 minutes in summer.



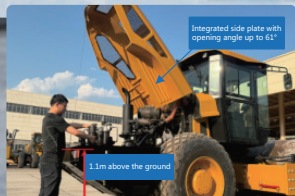
More reliable quality

- ◆ Reinforced four-point support + vibration bearing waterwheel lubrication technology (patent) is adopted for the vibrating drum, with a service life of more than 10000 hours, and the number of damping blocks at the traveling end is increased to 8;
- ◆ Hydraulic system self-cleaning system is equipped to ensure the durability of the hydraulic system;
- ◆ Reinforced mine rear axle is adopted (the planetary reducer has independent lubrication, with larger modulus of main reducer, and the number of wheel-hub planet gears is increased from 3 to 4) to ensure durability for more than 5000 hours.



More convenient maintenance

- ◆ All filters are facing outward, which is convenient for maintenance personnel to replace them directly outside the frame;
- ◆ Integrated cover (integrated side plate), opening range up to 61° , easy and convenient maintenance;
- ◆ The frame is only 1.1m above the ground, realizing one-stop maintenance;
- ◆ Predictive maintenance technology V2.0 and the third generation of intelligent display system realize intelligent prediction of problems.



Economic value analysis

Efficient compaction, earning an additional RMB 12,000 per year:

- ◆ Efficient compaction, earning an additional RMB 12,000 per year;
- ◆ Large exciting force, good uniformity, with efficiency and quality more than 10% higher, making an additional profit of RMB 12,000/year;
- ◆ Scenario 1: Calculated according to the variable quantities and more pay for more work, SANY is 10% more efficient in road-rolling than competitors every year. According to the industry average annual income of RMB 120,000, SANY earns an additional RMB 12,000 (RMB 120,000 × 10%=RMB 12000) every year;
- ◆ Scenario 2: Calculated according to the fixed quantities, SANY has high efficiency and saves 10% of time for the same project. According to the average annual construction hours of 1500 hours, SANY saves about RMB 12000 (oil price RMB 8/L, oil consumption 10 L/h, 150 h × RMB 8/L × 10 L/h =RMB 12,000) every year. In addition, the driver's salary can be saved for 1 month;
- ◆ Compaction amplitude uniformity < 7%, with less roughness of pavement.

Low O&M cost, saving RMB 14,000/year:

- ◆ The fuel consumption is lower, the engine features customized curve, intelligent load matching, and the fuel consumption of high frequency and high speed compaction is as low as 9–11L/h (fuel price: RMB 8/L; annual working time: 1500h; fuel consumption reduction: 1L/h), saving RMB 12,000/year;
- ◆ The maintenance takes the least time, saving 50% of time and RMB 2,000/year in labor cost;
- ◆ Solid and durable with better value preservation;
- ◆ Mining standards and reinforced design of core components;
- ◆ Predictive maintenance technology escorts the healthy operation of equipment.

Product options and smart kit

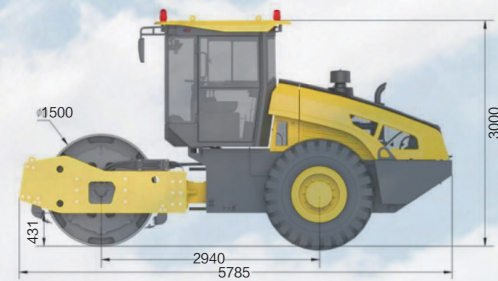
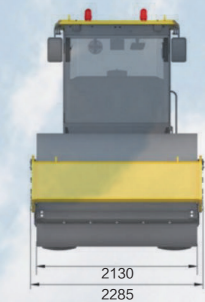
Optional configuration	Application Scenarios and Descriptions	SSR100C-10S(Euro III)
Smooth wheel	Compaction of earthwork, cement stabilized macadam and other subgrade	●
Combined padfoot	Commonly used for clay compaction; padfoot removable	○
Welded padfoot	Padfoot cannot be removed	○
Cab	Enclosed manoeuvring space with air conditioning	●
Driving shed	Open manoeuvring space without air conditioning	○
Rear axle without differential lock	Applicable to conventional subgrade compaction	●
Rear axle with differential lock	Used for compaction of sandy and soft subgrades Force the left and right tires to roll at the same time, so as to avoid slipping.	○
Tractor tire (herringbone type)	Used for compaction of soft and slippery earthwork subgrade Stronger grip for better driving force of tires.	○
Standard buoyancy tire (quincunx type)	Commonly used for compaction of cement stabilized macadam and sandy land; Small tire indentation and large contact area with the ground.	●
Thickened buoyancy tire (quincunx type)	Deep pattern, more skid-resistant and wear-resistant	○
Electronic anti-skid system	Often used for compaction of subgrade on sandy land and with large slope (≥30%); Intelligently adjusting the driving force of drums and tires to avoid slipping.	○
Intelligent rolling system	Used for key projects such as expressways and high-speed railways (with strict density requirements); Visually display compactness changes in real time through light display.	○
Reversing camera	Display real-time images at the rear of cab; Integrate images into the display screen of cab.	○
Manual release of parking brake	Emergency: When the engine cannot be started, it is urgent to drag the machine away from the site; Press the button manually to release the reducer and rear axle brake, so as to facilitate the dragging of the machine	○

●Standard ○Optional

Product Parameters

Overall Dimensions

All dimensions are approximate and overall dimensions vary depending on the service condition of the device.



Unit: mm

Item		Performance parameter	Item		Performance parameter
Load	Operating mass (kg)	10700	Maneuverability	Minimum ground clearance (mm)	431
	Mass allocated to vibrating drum (kg)	5820		Wheelbase (mm)	2940
	Mass allocated to driving axle (kg)	4880		Steering angle (°)	±35
	Static linear load of vibrating drum (N/cm)	268		Swing angle (°)	±12
Compaction	Vibration frequency (Hz)	32/36		Minimum turning outer diameter (mm)	11700
	Nominal amplitude (mm)	1.8/0.9		Tire specification	23.1-26
	Excitation force (kN)	280/178	Engine	Supplier	Cummins
	Diameter of vibrating drum (mm)	1500		Model	QSB3.9-C150
	Width of vibrating drum (mm)	2130		Emission	Euro III
	Vibrating drum rim thickness (mm)	25		Rated power (kW)	110
Maneuverability	Travel speed (km/h)	0~5	Capacities	Battery, V×Ah	24×120
		0~6		Fuel tank (L)	200
		0~9		Hydraulic oil tank (L)	80
		0~12			
	Theoretical gradeability	65%			

