



Basic specifications

- **Type:** SITRAK C5H 4x2
 - > Engine Output: 345HP China VI
 - > Transmission: Manual
 - > Wheelbase: 4700mm
 - > Cab: 2+4
- **Boom system:**
 - > 2-section telescopic boom
 - > Max working height: 14.5m
 - > Max working amplitude: 11.0 m
 - > One key control: boom extend and fold
 - > Boom and outrigger extend time: 50s
 - > Swing angle of working platform: -7°- 80°
 - > Elevating Lighting: 2x55W LED
- **Winch:**
 - > Electric drive, DC 24V
 - > Max. traction: 3000kg
- **Generator:**
 - > Type: HONDA EL6500CX
 - > Rated power: 5kW
- **Extinguish system:**
 - > Pump type: Hale CB10/60-MBP
 - > Pump flow: 3600L/min @10 bar
 - > Monitor type: Akron PLKD10/80B, electrical remote control fire monitor
 - > Monitor flow: 2880L/min
 - > Fire monitor throw range: water/70m, foam/60m
 - > Water tank volume: 3500L
 - > Foam tank volume: 1000L
 - > Foam proportioning system: 3%, 6%
- **Connector:**
 - > Water outlet: 4*DN80
 - > Water filling: 2*DN80
 - > Water suction: 1*DN150
 - > Foam suction: 1*DN50
 - > Foam filling: 1*DN65
- **Electrical system:**
 - > LCD control screen (rear of vehicle)
 - > DC12V/24V&AC220V charging interface

4.5T TANK FIRE TRUCK



Dimensions and weight

L*W*H	8,600 * 2,540 * 3,760 mm
Permitted gross weight	20,100 kg

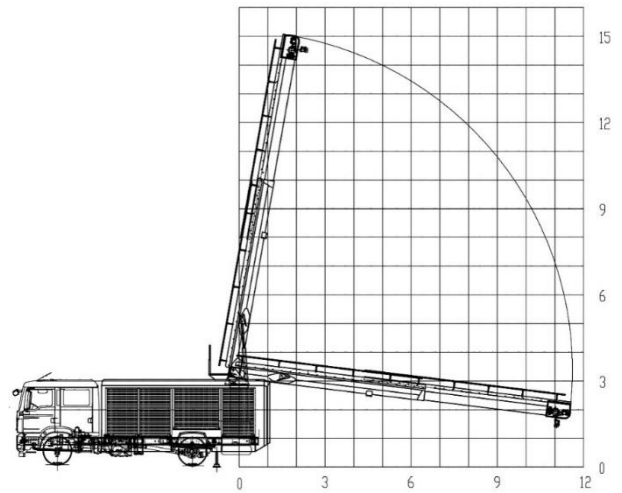
Optional:

Chassis: MAN TGM 18.290 B 4x2 China VI

Water tank volume: 2700L

Foam tank volume: 300L

Foam system: Hale PTO CAFS 120, 0.1%-10%



Product features

Efficient extinguish

The boom and monitor can be linked to extinguish middle and high-rise building fire

Electric control monitor: Wireless + wired control modes

Equipped with two kinds of foam tanks, which can extinguish both solid and liquid fires



Aerial rescue

High: Maximum working height 15 m

Far: Maximum rescue range 11.5 m

Flexible: The boom can be fully extended and elevated when the vehicle is only 1 m away from a building

Fast: The extension (including outriggers and boom) can be completed within 50s by one key

Strong: The ladder can carry 3 people at the same time



More functions



Power supply

HONDA EL6500 generator

Rated power: 5.6kW

Winch

Electric winch

Maximum pulling force: 5.4 T

Emergency rescue

Detection, demolition, leak plugging, smoke exhausting etc.



Aerial Lighting

HONDA EL6500 generator

Rated power: 5.6kW

More intelligent

Digital instrument, parameter display more intuitive

