

SANY[®]

SPECIFICATION



 **300t**

 **90m**

 **129m**

SAC3000C8-8A

SANY ALL TERRAIN CRANE

QUALITY CHANGES THE WORLD

www.sanyglobal.com

V1.0

It is one of the core business units in SANY Group, specializing in the development and manufacturing of high-end wheel cranes, crawler cranes and tower cranes, including the complete range of wheel cranes from 8 to 2400t, crawler cranes from 25 to 4500t and tower cranes from 6 to 185t.

三一集团旗下核心事业部，从事高端轮式起重机、履带起重机、塔式起重机系列产品的研发制造。覆盖8-2400吨全吨位轮式起重机，25-4500吨全吨位履带起重机，6-185吨塔式起重机。



SANY CRANE



Five-axle all-terrain chassis, dual-engine, 90m 8-section boom, standard 22m fixed jib, extendable up to 50m. Featuring a self-assembly modular design for superlift. Equipped with a 100-ton tray-type counterweight, with standard counterweight blocks compatible with 400-700-ton lifting capacity cranes. Fitted with 445 tires, and featuring new cabs and exterior design.

五桥全地面底盘, 双发, 8 节主臂 90m, 固定副臂标配 22m, 最长选至 50m, 可自拆装模块化超起, 100t 托盘式配重, 标准配重块通用 400-700 吨级, 445 轮胎, 全新两室、全新造型。



SANY ALL TERRAIN CRANE SAC3000C8-8A / 300T LIFTING CAPACITY

Superior Lifting Performance

Luffing cylinder: The only crane in its tonnage equipped with dual cylinders, ensuring worry-free lifting performance in short boom conditions.

Boom: Consists of 8 sections of U-shaped boom, with a full-extension length of 90m.

Fixed jib: Offers various combinations of jib lengths ranging from 15m to 50m, with three jib angle $0^{\circ}/20^{\circ}/40^{\circ}$.

Superlift device: Capable of self-assembly without the need for auxiliary cranes, increasing lifting performance of the long boom section by over 80%.

Longest boom+jib: Maximum lifting height of 129m, suitable for high-voltage towers and urban high-altitude operations.

起重性能强

变幅油缸：同吨位级唯一配置双油缸，短臂段吊重工况起幅无忧；

主起重臂：8节U型主臂，全伸臂90m；

固定副臂：15m-50m多种臂长组合， $0^{\circ}/20^{\circ}/40^{\circ}$ 可变位；

超起装置：不用辅助吊车可实现自拆装，长臂段起重性能增加80%以上；

最长主副臂：最大起升高度129m，适用于高压线塔、城市高空作业。

Excellent Driving Performance

Innovative five-axle reinforced chassis structure, featuring all-wheel steering and four-wheel drive, with multiple steering modes, exhibiting outstanding adaptability to various driving conditions. Brand new intelligent multi-mode hydro pneumatic suspension system, with real-time monitoring of vehicle posture, active hoisting, and adaptive damping functions, providing a more comfortable ride and ensuring stable driving.

Powerful power and transmission system, equipped with retarder braking, greatly improving driving safety and smoothness. HANDE axles and 445 large tires, significantly enhancing transfer on site efficiency.

行驶性能卓越

创新五桥加强型底盘结构，全轮转向、四桥驱动，多种转向模式，行驶适应能力超强；全新智能多模式油气悬挂系统，车体姿态实时监控、主动提升和变阻自适应等功能，驾乘更舒适，行驶更稳定；

强劲动力及传动系统，配备缓速制动，极大提高行驶安全性和平顺性；

汉德车桥、445大轮胎，转场效率大幅提升。



Efficient and Reliable

- Multi-pump, multi-circuit hydraulic system, with electric proportional and multi-stage pressure control, achieving optimized speed range and fine inching performance, resulting in superior performance.
- Innovative tension control technology, enabling one-key automatic tensioning and fold/unfold of the superlift, increasing operational efficiency by 20%. Superlift active correction technology against side bending, ensuring more worry-free and safer long-boom operations.

高效可靠

多泵、多回路液压系统，电比例及多级压力控制，实现速度分档和微动性优化，性能更卓越；
全新定长张紧控制技术，一键自动张紧及收/展超起，作业效率提升20%；超起抗旁弯主动修正技术，长臂作业更省心、更安全。

GCP System

Equipment remote monitoring and management system, equipped with powerful functions for equipment operation status and operational parameter collection, enabling remote fault diagnosis and management.

Intelligent monitoring: High-definition image quality, monitoring from six angles, comprehensively overseeing equipment operation conditions.

GCP 系统

国内首创的设备远程监控管理系统，具备强大的设备运行工况、作业参数采集功能，可实施远程故障诊断、管理；
智能监控：高清图质，眼观六路，全面看护设备作业情况。

**SANY ALL TERRAIN CRANE
SAC3000C8-8A / 300T LIFTING CAPACITY**

Safe and Reliable

Multi-functional wireless remote control system makes crane operations more convenient and safer.

Equipped with anti-tipping warning system, safety protection procedures, and fault diagnosis system to ensure the safety of vehicle operations.

Utilizes high-precision, high-stability, and highly intelligent torque limiter system to provide comprehensive protection for lifting operations.

Equipped with a variety of sensors to provide timely feedback on data information, enabling real-time monitoring and keeping track of the vehicle's working status at all times.

安全可靠

多功能无线遥控系统，起重机作业更加方便，操作更加安全；

配备防倾翻预警系统，操作安全保护程序及故障诊断系统，保证车辆的作业安全；

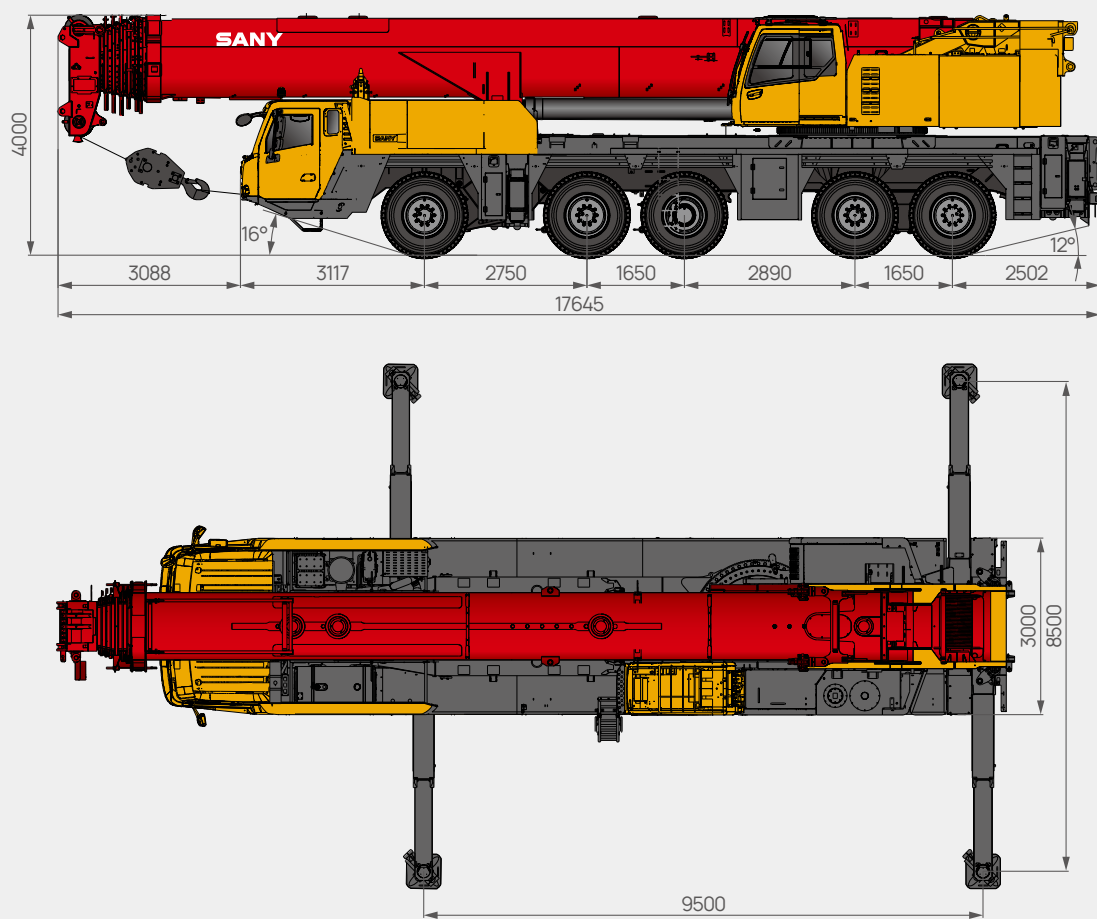
采用高精度、高稳定性、高智能化的力矩限制器系统，全方位保护吊载作业；

配置丰富的传感器件，及时反馈数据信息，实时监控，随时掌握整车工作状态。



Overall Dimensions

整机尺寸



Technical Specification

整机参数

CATEGORY 类型	ITEM 项目	UNIT 单位	VALUE 参数
CAPACITY 额定起重量	Max. lifting capacity 最大起重量	t	300
WEIGHT 重量	Gross weight 整机总质量	kg	84000
POWER (CHASSIS) 发动机参数 (下车)	Max. engine power 发动机最大功率	kW/rpm	405/1900
	Max. engine torque 发动机最大输出扭矩	N·m/rpm	2500/(950~1400)
POWER (SUPERSTRUCTURE) 发动机参数 (上车)	Max. engine power 发动机最大功率	kW/rpm	221/2200
	Max. engine torque 发动机最大输出扭矩	N·m/rpm	1200(1400~1600)
DIMENSIONS 尺寸参数	Overall length 整机全长	mm	17645
	Overall width 整机全宽	mm	3000
	Overall height 整机全高	mm	4000
	Axle base 轴间距	Axles 1 & 2 第一、二轴距	mm 2750
		Axles 2 & 3 第二、三轴距	mm 1650
		Axles 3 & 4 第三、四轴距	mm 2890
		Axles 4 & 5 第四、五轴距	mm 1650
TRAVEL 行驶参数	Max. travel speed 最高行驶速度	km/h	80
	Min. steering radius 最小转弯半径	m	10
	Wheel formula 车轮模式	-	10 × 8 × 10
	Min. ground clearance 最小离地间隙	mm	274
	Approach angle 接近角	°	18
	Departure angle 离去角	°	13
	Max. gradeability 最大爬坡度	-	58%
	Fuel consumption per 100km 每 100 公里油耗	L	70
MAIN PERFORMANCE 主要性能参数	Working temperature range 使用温度区间	°C	-20~+40
	Min. rated lifting radius 最小额定幅度	m	3
	Boom sections (Qty.) 臂节数	-	8
	Boom shape 臂形状	-	U shape U型
	Max. lifting moment 最大起重力矩	Basic boom 基本臂	t·m 900
		Full-extension boom 全伸主臂	t·m 461
		Full-extension boom + jib 全伸主臂 + 副臂	t·m 174
	Boom length 臂长	Basic boom 基本臂	m 15.6
		Full-extension boom 全伸主臂	m 90
		Full-extension boom + jib 全伸主臂 + 副臂	m 129
	Max. lifting height 最大起重高度	Basic boom 基本臂	m 15.6
		Full-extension boom 全伸主臂	m 90
		Full-extension boom + jib 全伸主臂 + 副臂	m 129
	Outrigger span (Longitudinal × Transverse) 支腿跨距 (纵 × 横)	m	9.5 × 8.5
	Jib offset 副臂安装角度	°	0, 20, 40
AIRCONDITIONER 空调	In operator's cab 上车空调	-	Heating & Cooling 制冷、制热
	In driver's cab 下车空调	-	Heating & Cooling 制冷、制热

Technical Specification

整机参数



Axle Load 轴荷

Axle 轴	1	2	3	4	5	Gross weight 总重量
Axle load 轴荷 /t	12	12	12	12	12	60
Remark 备注	Excluding outrigger pads, hooks, jib, spare tire & spare tire bracket, auxiliary, 3-8 sections of boom, boom nose pulley, wire rope, superlift interface device and so on.. 行驶时不带:支腿盘、吊钩、副臂、备胎架及备胎、副卷扬、第3-8节臂、臂头滑轮、挡绳支架、钢丝绳、超起接口装置等。					



Hook 吊钩

Rated load 额载 /t	Number of sheaves 滑轮数量	Rope rate 倍率	Hook weight/kg 吊钩重量
125 (double eye hook) ○	7	14	1443
80 (double eye hook) ●	3	7	696
32 ○	1	3	479
12.5 ●	1	1	270

● Standard 标配 ○ Optional 选配



Operations 主要动作参数

Item 项目		Max.single rope lifting speed (empty load) 单绳速度 (空载)	Rope diameter/length 钢丝绳直径 / 长度	Max. single line pull 最大单绳拉力
Main winch 主卷扬		125m/min	Φ22mm/410m	10t
Slewing speed 回转速度		1.5r/min		
Full luffing up/down time of boom 主臂起落幅时间		65s/115s		
Full extension time of boom 主臂全伸时间		850s/850s		
Outrigger beam 水平支腿	Extension 伸	50s		
	Retraction 缩	50s		
Outrigger jack 垂直支腿	Extension 伸	50s		
	Retraction 缩	55s		

Crane Introduction

整机介绍

Carrier 下车



Driver's cab 驾驶室

- It is made of SANY independently developed new steel structure with excellent shock absorption and sealing, and designed with outward opening doors, comfortable driver's seat and co-driver's seat equipped with pneumatic suspension, adjustable steering wheel, wide-view rear-view mirror, demister, HVAC, stereo radio, and complete set of control instruments and meters, which is more comfortable, secure and user-friendly.
- 驾驶室为三一自主研发新款驾驶室，自主开发新型钢结构，减震性和封闭性优良，两侧外开式车门，配备气动悬挂的驾驶室与副驾驶座、可调整式的转向盘、大视野后视镜、配有头枕的舒适驾驶椅、防雾扇、冷暖空调，立体收音机等装配，控制仪器和仪表齐全，更加舒适、安全、人性化。



Carrier frame 车架

- Designed and manufactured by SANY, the torsion-resistant box-type structure with optimized structure and low weight is welded by fine-grained high-strength steel plates. The outriggers are retracted in special fixed boxes, which are located between axle 2 and axle 3 and at the carrier frame tail, and equipped with front towing devices.
- 三一自主研发并专业化制造，结构优化，防扭转箱型结构，细晶粒高强度钢板焊接制作；支腿收缩在特制固定箱中，支腿箱位于1桥和2桥之间以及车架尾部；并且配备前牵引挂钩。



Chassis engine 底盘发动机

- Model: WEICHAI WP13.550E62, supercharged, intercooled diesel engine.
- Rated power: 405kW/1900rpm.
- Max. torque: 2500N·m/(950-1400)rpm.
- Emission standard: Comply with GB17691-2018 China VI Standard.
- Fuel reservoir capacity: 560L.
- 型式：潍柴WP13.550E62发动机，增压中冷、柴油发动机；
- 额定功率：405kW/1900rpm；
- 最大扭矩：2500N·m/950-1400rpm；
- 环保性：排放符合GB17691-2018国VI标准；
- 燃料箱容量：约560L。



Transmission 变速箱

- FAST AMT with 12 speeds forward and 2 speeds reverse, featuring high-quality shifting, rapid response, and an integrated hydraulic retarder, reducing brake wear.
- 法士特手自一体变速箱（12个前进挡、2个倒挡），高品质换挡，响应迅速，集成式液力缓速器，降低刹车磨损。



Axle 车桥

- HANDE axles, with all axles steered, and axles 1, 2, 4, 5 driven. Axles 1 and 2 are equipped with linkage-feedback hydraulic power steering system, and axles 3, 4 and 5 are equipped with electro-hydraulic steering system, providing speed control assist and several special steering modes for option, and ensuring nimble steering and flexible control.
- 高品质汉德车桥，全桥转向，1、2、4、5桥驱动。1、2桥采用杆系反馈的液压助力转向系统，3、4、5桥采用电液控制转向，可进行速度控制的辅助及可选择特殊转向模式，转向轻便，操控灵活。



Wheel formula 车轮模式

- 10 × 8 × 10.



Suspension system 悬挂系统

- Multi-mode height adjustable hydro-pneumatic suspension devices with hydraulic lockout, which can realize five modes incl. suspension, rigid locking, auto leveling, whole vehicle rising and single point rising & lowering. It can conduct real-time monitoring of vehicle attitude, smart identifying of axle load, active rising and self-adaptability to tough terrains, ensuring smoothness and lateral stability during driving.
- 智能多模式油气悬挂系统，悬架高度可调，带液压闭锁装置，能实现悬挂、刚性锁定、自动调平、整车升降、单点升降五种模式。具备车体姿态实时监控、轴荷智能识别、主动提升和复杂路面自适应等功能，驾乘更舒适，行驶更稳定。



Steering 转向系统

- Six steering modes: 1) on-road driving (default); 2) all wheel steering; 3) crab steering; 4) reduced swing out steering; 5) independent rear axle steering; 6) independent front axle steering.
- 可分为六种转向模式：1.公路行驶模式（默认模式）；2.全转向模式；3.蟹行模式；4.无偏摆转向模式；5.独立后桥转向模式；6.后桥锁定转向模式。



Tires 轮胎

- TECHKING 445 tires.
- 泰凯英445轮胎。



Outrigger 支腿

- H-type two-stage telescopic outriggers. The telescopic hydraulic system of outrigger adopts electric proportional control technology and is equipped with wireless remote control with high control precision and easy operation, and has the function of automatic leveling.
- 活动支腿采用双H型两级伸缩支腿，支腿伸缩液压系统采用电比例控制技术，并配置有无线遥控，并具有自动调平等功能，控制精度高，操作简便。



Brake 制动系统

- Service brake: All wheels are equipped with air servo brakes, dual-circuit braking system, with disc brakes installed on the axle 1 and axle 2.
- Parking brake: Actuated by the accumulator, it applies to the axle 2 to axle 5.
- 行车制动器：所有车轮均采用空气伺服制动器，双回路制动系统，所有车轮均装有盘式制动器；
- 驻车制动器：由蓄压器驱动作用在第二至第五桥上。



Electrical system 电气系统

- 24 V DC power supply. Chassis power supply can be cut off, equipped with auto lighting system, actions of the vehicle such as throttle and outrigger control are realized by electrical control with easy and fast operation, the electrical system has strong detection, logic, operation and other capabilities, and has the functions of fault diagnosis, centralized display and self-protection.
- The chassis adopts CAN bus system, which is provided with: fast, stable and accurate data transmission; multi-functional centralized display system, high protection grade of IP65, low power consumption with a maximum of 5W, with four function keys provided in the user interface; LCD is used for display adjustable for contrast..
- 采用24V直流电源，可实现下车电源切断；配备汽车照明系统；车辆的动作，如油门、支腿操纵等都经电气控制实现，使动作轻便、快捷；电气系统有很强的检测、逻辑、运算等能力，具故障自诊断、集中显示及自我保护功能；
- 底盘采用CAN总线系统，具有数据快速、稳定、准确等优点；多功能的集中显示系统；防护等级高，IP65；功率消耗小，最大仅有5w；在用户界面提供四个功能键；显示采用LCD液晶，对比度可调整。

Crane Introduction

整机介绍

Superstructure 上车



Operator's cab 操纵室

- Sany new type operator's cab, which can be tilted upward by 20°. It adopts corrosion-resistant steel plate, it is provided with full coverage softened interior, panoramic sunroof, tilt positioning of operator seat back and other human centered design make the operation comfortable and easy. Configure main and auxiliary display screens to seamlessly integrate the main console with the operating display system, providing a clear and comprehensive view of all operating condition data during the lifting operation. Touch screen with adjustable viewing angle, multi-screen and multi-angle monitoring to ensure operation safety and realize one-touch operation, the main boom, luffing jib and superlift hoist are equipped with monitors for centralized monitoring in key areas. Perfect combination of main console and operation display system enables quick and easy human-computer interaction, heating and cooling A/C is provided.
- 三一新款操纵室, 0°~20°可变角度, 采用耐腐蚀钢板, 配置全覆盖 软化内饰、全景式天窗、可调节式座椅等人性化设计, 操作更舒适、轻松; 配置主、辅显示屏, 实现主控台与操作显示系统有机结合, 使吊装作业的全部工况数据一目了然; 触摸式显示屏, 视角可调节, 多画面、多角度监控保证作业安全, 满足一键式操作; 主臂及超起卷扬配备监视器, 重点区域集中监视; 主控台与操作显示系统有机结合, 人机交互方便快捷; 配备冷暖空调。



Superstructure engine 上车发动机

- Model: WP7G300E473, electronically controlled, in-line six-cylinder, watercooled, supercharged intercooled and diesel engine.
- Rated power: 221kW/2200rpm.
- Max. torque: 1200N.m/1400~1600rpm.
- Emission standard: complying with EU Stage III A.
- Fuel reservoir capacity: 400L.
- 型号: WP7G300E473, 电控、直列六缸、水冷却、增压中冷、柴油发动机;
- 功率: 221kW/2200r/min;
- 最大扭矩: 1200Nm/1400~1600rpm;
- 排放标准: 排放符合非道路IV阶段标准;
- 燃料箱有效容积: 400L。



Slewing 回转系统

- High-quality piston main pump, , and supports 360° slewing at a speed of 0~1.5r/min. The electro proportional closed type hydraulic circuit and electro proportional pedals are applied, enabling emergency braking.
- 高品质柱塞主油泵, 360° 回转, 回转速度0~1.5r/min; 采用电比例闭式液压回路, 电比例踏板, 可实现紧急制动。



Slewing platform 转台结构

- Independently designed by Sany, it is made of fine grained high-strength steel plates, with optimized structure.
- 三一自主设计, 结构更优化, 由细晶粒高强度钢制成。



Boom system 吊臂系统

- Main boom: It is composed of 1 base boom and 7 telescopic sections. It is made of fine-grained high-strength steel plates by bending and welding, with oval shape profile, it has good buckling resistance. The single cylinder automatic pinning system is adopted, and a double-acting cylinder can control the extension and retraction of all booms to achieve a combination of multiple boom lengths, the basic boom length is 15.6m and the full-extension boom length is 90m.
- Jib: There are fixed jib: the fixed jib is equipped with the adapter, jib head, 7m large (small) section standard sections, which can realize the jib length combination of 15m~50m. The offset can be changed according to the actual needs of working conditions to improve the automation level, reduce the labor intensity and improve the work efficiency.
- Superlift device: It's arranged on the left and right sides of the head of the base boom, and independent from each other, and it can realize assembly and disassembly without auxiliary crane. The superlift device can greatly improve the stress state of the boom, avoid side bending and reduce the downward deflection deformation of the boom, so that the deflection in the long boom state can be reduced by 20%-30%.
- 主起重臂:
由1节基本臂和7节伸缩臂组成, 采用细晶粒高强度钢板折弯、焊接制成, 采用椭圆形截面, 抗屈曲性能好; 采用单缸自动插销式系统, 一个双作用油缸可以控制所有吊臂的伸缩, 达到多种臂长组合; 基本臂长15.6m, 全伸臂长90m;
- 副起重臂:
固定副臂: 固定副臂有转接头、副臂臂头、7m大(小)截面标准节, 可以实现15m~50m的臂长组合, 可根据工况的实际需要而变化角度, 提高了自动化水平, 减轻了劳动强度, 提高了工作效率;
- 超起装置:
布置于基本臂头部左右两侧, 左右独立, 无需辅助吊装可实现自拆装; 超起装置使得起重臂的受力状态得到很大改善, 避免旁弯, 减小起重臂的下挠变形, 起重臂在长臂状态下下挠度可减小20%-30%。



Hoist 起升机构

- The main winch adopts an electro proportional variable piston motor, providing good hoisting inching mobility and stability.
- 主卷扬采用电比例变量柱塞马达, 卷扬微动性、平稳性好。



Luffing system 变幅系统

- The only dual-luffing cylinder within the same tonnage class, featuring passive luffing, providing greater energy efficiency. It employs electric proportional control balance valves.
- 同吨位级唯一双变幅, 自重落幅, 更加节能。采用电比例控制平衡阀。

Hydraulics 液压系统

- Key hydraulic components including main pump, slewing pump, main valve, winch motor and balance valve are of high quality, ensuring the stability and reliability of the hydraulic system; the accurate parameter matching further improves the operation performance.
- Electro proportional variable displacement piston pump is applied, and the pump displacement is adjusted in real-time by changing the opening of electric control joy, realizing high-precision flow control and reducing the energy consumption.
- Self-developed dual-pump shunt/confluence main valve enables higher speed in case of single motion and better maneuverability in case of combined motions.
- Passive compensated luffing down is adopted, ensuring better inching movement and stability.
- The slewing system is of closed type, and the flow rate and the flowing direction are changed by adjusting the variable pump swash plate, providing better inching mobility and stability. Single-cylinder pin telescoping system is applied for the boom.
- 采用高品质的主油泵、回转泵、主阀、卷扬马达、平衡等关键液压元件，保证液压系统稳定、可靠；通过精确的参数匹配，使操作性能更加优越；
- 采用电比例变量柱塞泵，通过电控手柄开度的变化，实时调节油泵排量，实现高精度流量控制，作业时无能量损耗；
- 采用自主研发的双泵合/分流主阀，单动作双泵合流效率更高，组合动作双泵分流操控性更好；
- 采用自重落幅补偿液压系统，落幅微动性、平稳性更优越；
- 回转为闭式系统，通过调节变量泵斜盘的角度来改变流量及方向，微动性优越、回转平稳。主臂伸缩采用单缸插销伸缩系统。

Control system 控制系统

- Powered by 24 V DC, it adopts cable wiring, CAN-BUS control network, and combines with conventional electrical to realize the logic control and electrical proportional control functions of the system.
- It has the functions of system real-time monitoring and automatic fault diagnosis.
- The display is connected with the controller by CAN bus, and its main functions include digital adjustment and display of electric proportional control parameters, fault code display of electric proportional system and real-time detection data display of hydraulic system.
- 由24V直流电源供电，采用电缆布线，CAN-BUS总线控制网络，与常规电气相结合，完成系统的逻辑控制与电比例控制功能；
- 具有系统实时监测和故障自动诊断功能；
- 显示器由CAN总线与控制器联接，主要功能：电比例控制参数的数字化调整和显示，电比例系统的故障代码显示，液压系统实时检测数据的显示。

Counterweight 配重

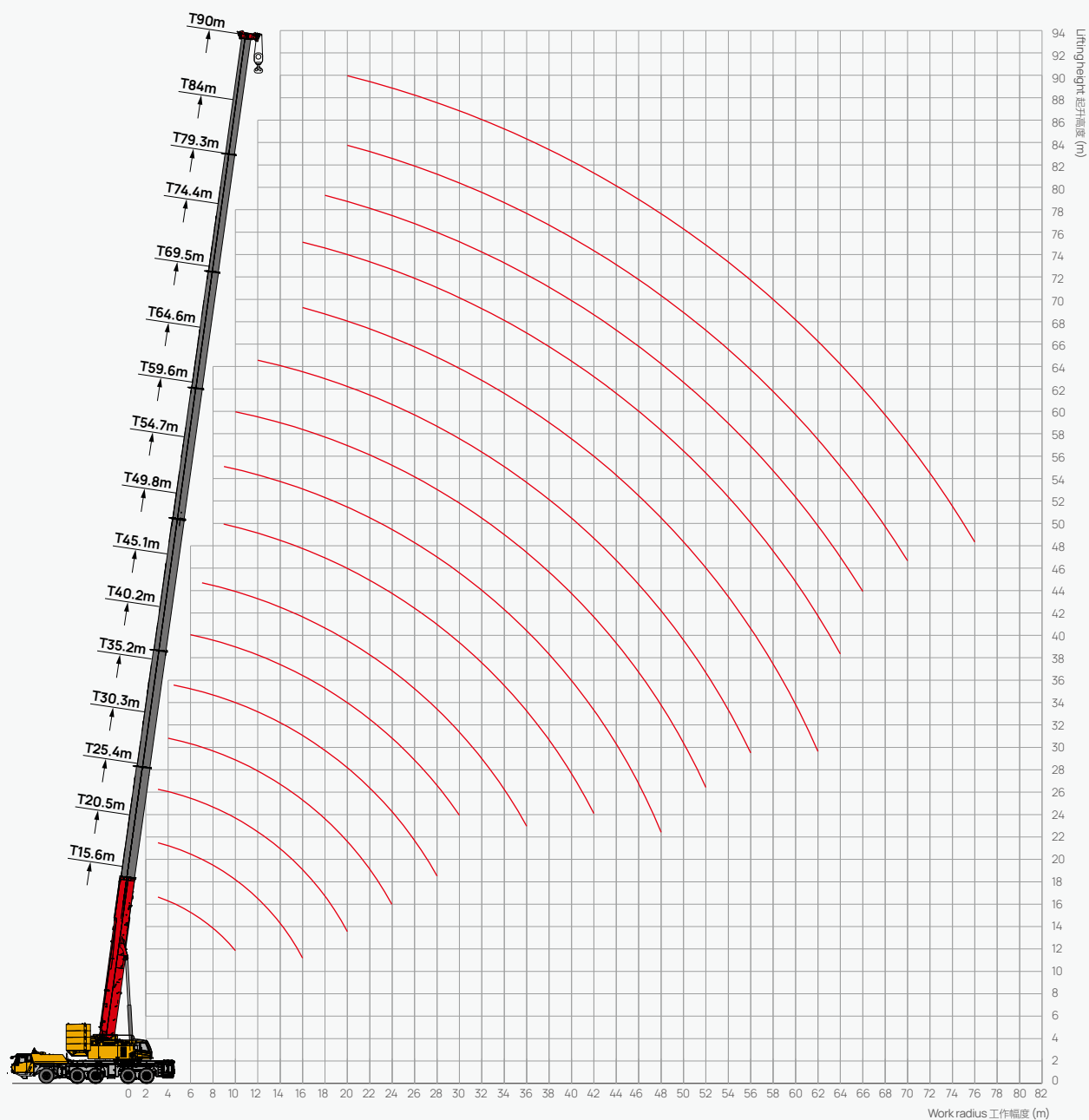
- Tray-type counterweight with variable combination: 100t, 90t, 80t, 70t, 60t, 50t, 40t, 30t, 20t, 10t, 0t.
- 托盘式配重，有以下组合：100t, 90t, 80t, 70t, 60t, 50t, 40t, 30t, 20t, 10t, 0t。

Safety equipment 安全装置

- A method of analytical mechanics is adopted and a load moment indicator calculation system based on the lifting mechanics model is established.
- Through online empty-load calibration, the lifting accuracy can reach $\pm 3\%$.
- The hydraulic system is equipped with hydraulic balance valve, relief valve, two-way hydraulic lock, etc. to realize the stability and reliability of the hydraulic system.
- The boom and luffing jib hoists are equipped with 3rd wrap indicators to prevent over-hoist-down of the wire rope.
- The boom head and jib head are equipped with A2B switch to prevent the wire rope from over winding.
- The boom head is equipped with an anemometer to detect whether the wind speed exceeds the allowable range.
- 采用分析力学方法，建立了基于吊重力学模型的力矩限制器计算系统，通过在线空载标定，吊重精度达到 $\pm 3\%$ ；
- 液压系统配置液压平衡阀、溢流阀、双向液压锁等元件，实现液压系统稳定可靠；
- 卷扬配置三圈保护器，防止钢丝绳过放；
- 臂端配置高度限位器，防止钢丝绳过卷；
- 臂端装有风速仪，检测高空风速是否超过可作业允许范围。

Operating Range - Telescopic Boom (T)

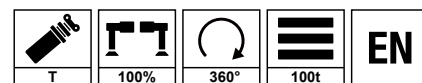
起升高度曲线 - 主臂





Load Chart - Telescopic Boom (T)

性能表 - 主臂

Unit: t

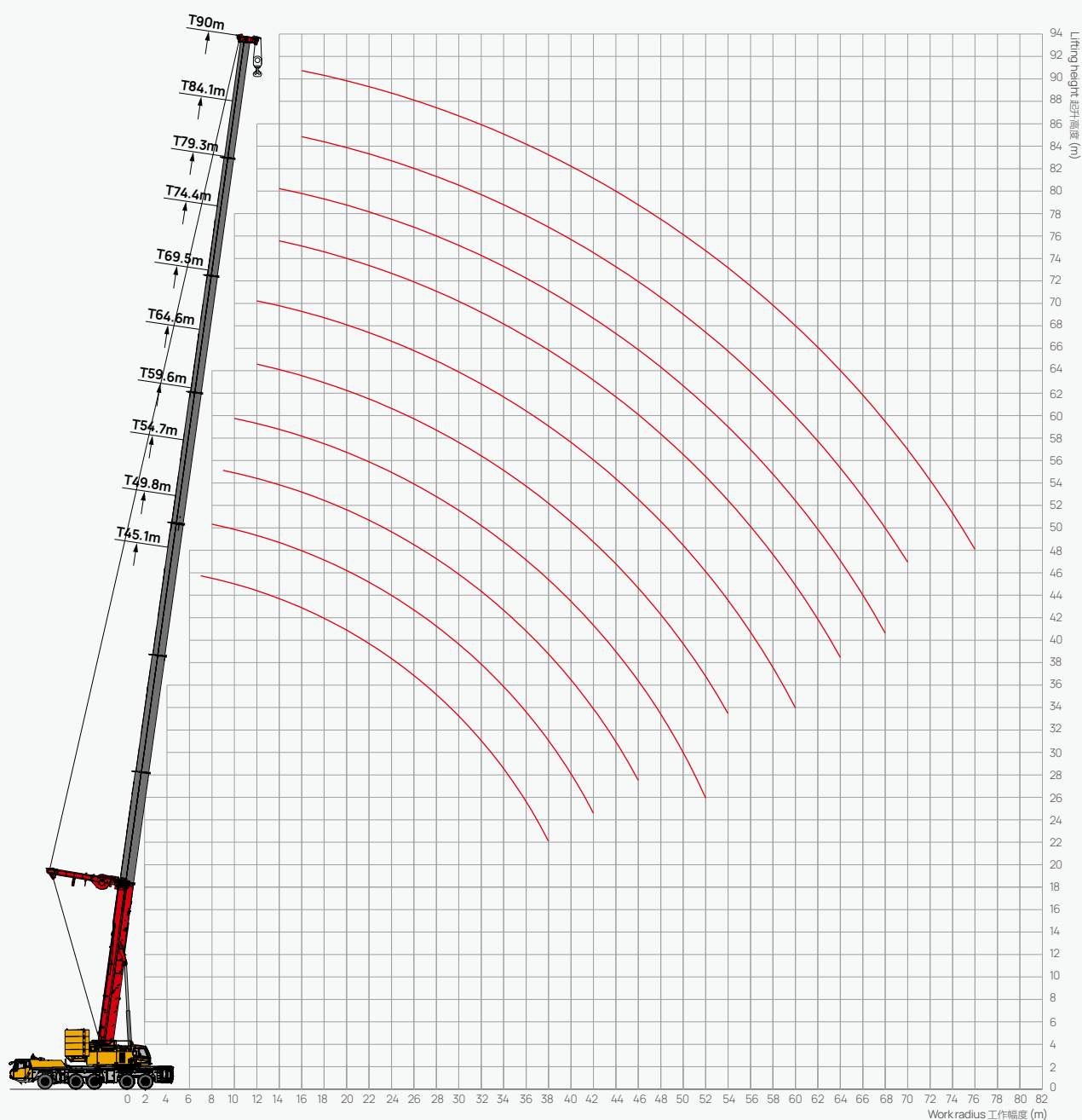


	15.6*	20.5	25.4	30.3	35.2	40.2	45.1	49.8	54.7	59.6	64.6	69.5	74.4	79.3	84.9	88.3	90	
3	300**	150	150															3
3.5	150	150	150															3.5
4	150	150	145	135														4
4.5	150	145	138	130	115													4.5
5	142	140	127	125	106													5
6	130	125	119	114.5	100	100												6
7	115	115	108	102	92	95	85											7
8	105	100	100	95	85.5	88	83											8
9	90	90	90	87	78	82.1	80.1	60	57.5									9
10	80.5	80	80	78.5	66	75.5	73.5	56.6	54	43.6								10
12		70.5	70	67.2	55.6	66.6	65.7	51.4	48.2	42.3	35							12
14		60	56	55.8	51	55.1	54.9	48.5	44.5	39	33.5							14
16		52.6	52	51.1	43.3	50.8	50.6	45	40.6	36.2	31.7	26.8	21					16
18			45	43.6	39	44	43.9	41.5	36	33.3	29.2	25	20.8	17.2				18
20			39.4	38.5	34.4	40.2	39.7	38.5	32.1	30	28.1	23.5	20.5	17	12.8	11.3	10.5	20
22				33.6	28.6	35.4	35.6	35.4	28	27.4	26	22.4	20	16.7	12.6	11.1	10.3	22
24				28.7	26.7	31.2	31.3	31.3	26.2	24.9	24.5	21.6	19.2	16.2	12.4	10.8	10.1	24
26					23.3	27	26.8	26.7	24.3	22.5	22.4	20.3	18.1	15.5	11.8	10.5	9.9	26
28						24.4	24.9	24.8	23.2	20.3	21.5	18	17.4	14.7	11.5	10.2	9.7	28
30						21.5	22.7	22.2	20.6	19	18.3	16.5	15.9	13.6	11.3	10	9.5	30
32							20.2	20.7	18.3	17.8	17	15.6	14.7	12.7	11.1	9.6	9.3	32
34							18	18	16.5	16	15.9	14.3	14.1	12	10.8	9.3	9	34
36							15.6	15.5	15.1	14.5	14.4	13.5	13.2	11.4	10.4	8.8	8.7	36
38								14.6	13.8	13.2	13	12.7	12.5	10.8	9.9	8.4	8.5	38
40								13.2	12.3	11.8	11.7	11.8	11.2	10.2	9.5	8.2	8.2	40
42								12.1	11	10.7	10.6	10.5	10.4	9.7	9.1	8	7.8	42
44									10.3	9.6	9.9	9.9	9.5	9.2	8.6	7.5	7.4	44
46									9.4	8.8	8.9	9.3	8.9	8.7	8.2	7.2	7.2	46
48									8.2	8.1	8.1	8.3	8.3	8	7.8	6.9	6.8	48
50										7.1	7.2	7.4	7.4	7.5	7.4	6.6	6.5	50
52										6.3	6.3	6.6	6.8	7	6.9	6.1	6.2	52
54											5.5	5.8	6.2	6.5	6.5	5.8	5.9	54
56											4.8	5.1	5.5	6	6.1	5.4	5.5	56
58												4.4	4.8	5.4	5.6	5	5.1	58
60												3.8	4.2	4.7	5	4.6	4.8	60
62												3.2	3.6	4.2	4.6	4.4	4.5	62
64													3.1	3.6	4.1	4.1	4.1	64
66														3.1	3.6	3.6	3.8	66
68															3.1	3.1	3.3	68
70															2.7	2.7	2.8	70
72															2.3	2.3	2.4	72
74															1.9	1.9	2	74

Remark: * Requires additional equipment.
备注: * 正后方作业工况/**名义起重重量

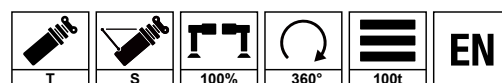
Operating Range - Telescopic Boom + Superlift Device (TS)

起升高度曲线 - 主臂 + 超起





Load Chart - Telescopic Boom + Superlift Device (TS)

性能表 - 主臂 + 超起



Unit: t

	45.1	49.8	54.7	59.6	64.6	69.5	74.4	79.3	84.1	90	
5											5
6											6
7	85										7
8	83	75									8
9	81	73.1	65								9
10	75	71.6	63.6	60.8							10
12	66	63.8	61	54.5	48.1	44.4					12
14	58	58	55	50	45.9	40	35	28.2			14
16	53	53.4	48.2	43.8	41	35.9	32.6	27.3	22.9	18.1	16
18	46.2	46.8	42.7	41	36.9	35	31.2	26.3	22.3	17.7	18
20	40.1	40.6	38	37	33.3	31.8	29.1	25.3	21.6	17.3	20
22	35.2	36.2	33.6	32.3	32.1	29.9	27.8	24.2	21.6	17	22
24	31	32.1	29.8	30.3	28.2	27.6	24.9	23.1	20.9	16.9	24
26	27.5	27.3	26.2	26.6	26.8	24.7	23.6	21.8	20	16.4	26
28	24.4	25.7	24.9	23.4	24.1	22.2	22	20.9	19.1	15.5	28
30	21.5	22.8	22	21	21.6	20.4	19.4	19.2	18.2	15	30
32	19	20.3	19.5	19.3	19.4	18.3	17.3	17.9	16.9	14.4	32
34	16.8	18.1	17.4	17.2	17.3	16.5	15.8	16.4	15.7	12.9	34
36	14.9	16	15.5	15.3	15.4	14.6	14.7	15.7	14.5	11.9	36
38	13.3	14.5	13.8	13.6	13.7	12.8	13.2	14.1	13.4	11.3	38
40		13	12.3	12.1	12.2	12	11.9	12.8	12.6	11.1	40
42		11.7	11	10.8	10.9	10.6	10.6	11.9	11.6	10	42
44			9.8	9.6	9.7	10	9.7	11.1	11	9.3	44
46			8.7	8.5	8.6	8.9	9.1	10	9.5	8.8	46
48				7.5	7.6	7.9	8.4	9	8.5	8.2	48
50				6.6	6.7	7	7.5	8	7.6	7.6	50
52					5.8	6.2	6.6	7.2	7	7.2	52
54					5.1	5.4	5.9	6.4	6.6	6.6	54
56						4.7	5.2	5.7	6.2	5.8	56
58						4	4.5	5.1	5.7	5.2	58
60						3.4	3.8	4.4	5.1	4.8	60
62							3.3	3.8	4.5	4.6	62
64							2.7	3.3	3.9	4	64
66								2.8	3.4	3.5	66
68								2.3	2.9	3	68
70									2.4	2.6	70
72										2.1	72
74										1.7	74



SANY GROUP CRANE BU

SANY Mobile Crane Industrial Park, No.168 Jinzhou Avenue, Jinzhou Development Zone, Changsha City,
Hunan Province, P.R. China Zip 410600
Consulting sanycrane@sanygroup.com (Crane BU) / crd@sany.com.cn (IHQ)
After-sales Service 0086-400 6098 318

Reminder:

Any change in the technical parameters and configuration due to product modification or upgrade may occur without prior notice.
The machine in the picture may include additional equipment. This brochure is for reference only, and goods in kind shall prevail.
Copyright at SANY. No part of this brochure may be copied or used for any purpose without written approval from SANY.

© Edited in March 2024

三一集团起重事业部

中国湖南长沙金洲开发区金洲大道 168 号 三一汽车起重机产业园 邮编: 410600
咨询: sanycrane@sanygroup.com (起重事业部) / crd@sany.com.cn (国际总部)
海外售后服务: 0086-400 6098 318

温馨提示:

由于技术不断更新, 技术参数及配置如有更改, 恕不另行通知。图中机器可能包括附加设备, 本画册仅供参考, 以实物为准。
版权为三一所有, 未经三一书面许可, 本画册任何内容不得被复制用于任何目的。

© 2024 年 3 月版

