

6×4 EV Dump Truck

Motor power

315kW / 2900Nm

Battery

352kWh

Cargo box volume

19m³~32m³

8×4 EV Dump Truck

Motor power

315kW / 2900Nm

Battery

400kWh

Cargo box volume

20m³ ~ 45m³

Model		6×4	8×4
Product Model 产品型号		SYZ319C-8LBEV SYZ320C-8LBEV SYZ322C-8LBEV SYZ328C-8LBEV SYZ332C-8LBEV	SYZ420C-8LBEV SYZ428C-8LBEV SYZ430C-8LBEV SYZ432C-8LBEV SYZ445C-8LBEV
Vehicle 整车	GVW 最大允许总质量	≤55t	≤80t
	Maximum speed (km/h) 最高车速	85 km/h	
Cabin 驾驶室	Model 型号	SANY 329	
	Cab lift 驾驶室举升	Electric + Manual 电动+手动	
	Driver's seat 司机座椅	Adaptive Air-Cell Damping Seat System 气囊座椅	
Chassis 底盘	Motor 电机	315/460 kw	
		1650/2900 Nm	
	Transmission 变速箱	4 AMT	
	Battery 电池	352kWh (O)	400kWh (O)
		Charging : (BEV) 充电 Swapping : (BEVS)换电	
	Front Axle 前桥	9.5T (S) 10T (O)	2×9.5T (S) 2×10 T (O)
	Rear Axle 后桥	2×16T (S) 2×23T (O)	
	Numbers of leaf spring 板簧片数	10/12	10/10/12
	Tire 轮胎	12.00R20 (S) 12.00R24 (O)	
		10+1 spare tire Included	12+1 spare tire Included
Cargo Box 货箱	Specification 规格	19-32 m ³	20-45 m ³
		Rectangle (S) U shape (O)	Rectangle (S) U shape (O)
		5600×2300×1500(19) 5800×2350×1500(20) 6000×2500×1500(22) 6200×2500×1800(28) 6500×2500×2000(32)	5800×2350×1500(20) 6200×2500×1800(28) 6800×2500×1800(30) 7200×2500×1800(32) 7800×2500×2200(45)

Four-time consecutive champion in Chinese new energy dump truck sales



321 Patents
(Inventions:195,Utility Models: 106,Design Patents:20)



The best-selling dump truck of the year 2024



2024 Excellent Brand Award

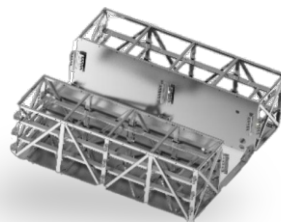


Perpetual motion scene



- Average slope **5%**, the energy recovered from full-load 80t downhill can cover the consumption of no-load uphill, and the **energy consumption is 0 kWh/km.**

平均坡度5%，满载下坡回收的能量可以覆盖空载上坡的消耗，能耗为0 kWh/公里



"Armor-style" protection

- Structural optimization, strength increased by **30%.**
- Bottom anti-collision plate **3mm.**
- Side fence **2mm.**

结构优化，强度提升30%。底部防撞板3mm厚。侧防护栏2mm厚。

Energy recovery function



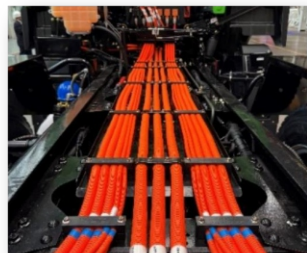
- Full-load downhill without braking. reduce brake friction plate cost **\$ 300 /year.**
- Reduce the Times of tire blowout by **20%.**

满负荷下坡不刹车。减少刹车摩擦片成本\$ 300/年。爆胎机率减少20%。

High reliability

- Integrated design.
- Layering the high/low voltage harness.
- Improved the anti-corrosion of harness **117%**
- Can be used within the temperature range **-65 ~ 200 °C.**

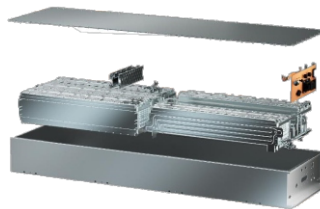
线束一体化，高/低压分层，线束的防腐性能提升117%，可在-65~200℃温度范围内使用。



4th generation battery

- Charging current: **500A dual gun.**
- Charging time is reduced by up to **20%.**
- Number of cycles: **4500.**
- Temperature Range: **-35°C~65°C.**

500A双枪充电。充电时间缩短20%。循环次数：4500次。使用温度范围：-35°C~65°C。



High power

- Peak power **460kW motor.**
- Maximum output torque **2900Nm.**
- Maximum climbing degree with GVW 80T can reach **30%.**

峰值功率460kW电机。最大输出扭矩2900Nm。GVW 80T最大爬坡度可达30%。

