



SY395H

Powerful Machine for Mountain Cutting Value Leader

Brand new change **QUALITY**
CHANGES THE WORLD
Quality changes the world



Selling Points

● Energy Conservation and Environment Protection

Energy Conservation and Environment Protection: With high-power environmental friendly GBIII engine, and precise real-time control of fuel injection, the combustion is more sufficient, and the fuel consumption reduces by 10% as compared with previous generation of same operating efficiency.

● Stable & Reliable

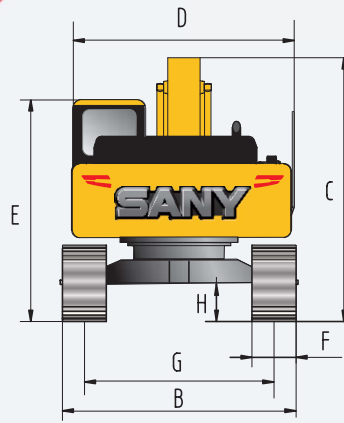
Reinforced working device, wear-resisting bucket, strengthened four wheels & track shoes, quartering hammer pipelines, and comprehensive test & verification system, the complete machine and each component could be covered and the overall performance becomes more stable and reliable.

● Heavy-duty & Efficient

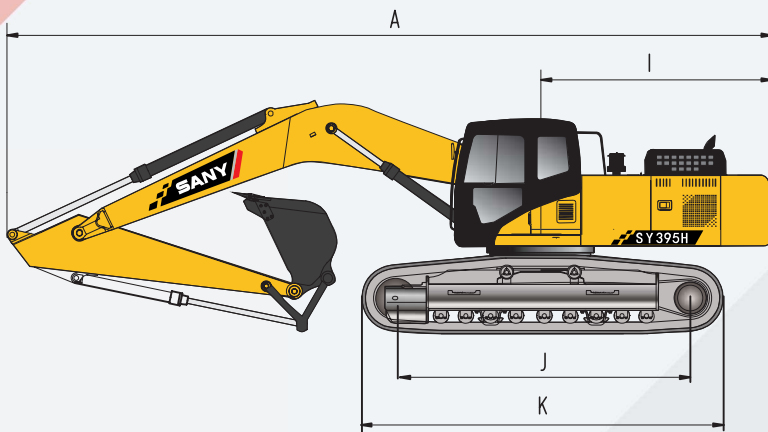
The digging force improves by 10% as compared with previous generation; with heavy duty additional power control, and optimized bucket shape, the heavy-duty operating efficiency is higher.

Overall dimensions (mm)

Standard



	SY395H
A. Overall length (in transportation state)	11700
B. Overall width	3360
C. Overall height (in transportation state)	3740
D. Upper width	3265
E. Overall height (cab top)	3470
F. Width of standard track shoe	600
G. Track gauge	2740
H. Minimum ground clearance	505
I. Slewing radius of tail	3740
J. Ground contact length of track	4340
K. Track shoe length	5320



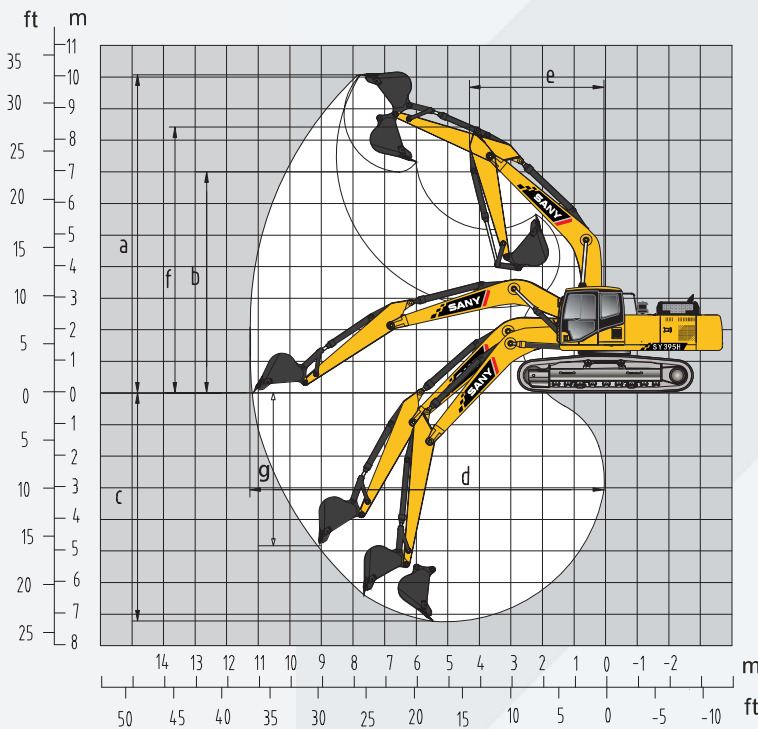
Performance parameters

Standard

	SY395H
Total weight, kg	40000
Bucket capacity, m ³	1.9
Rated power, kW/rpm	257/2000
Traveling speed (high/low), km/h	5.3/3.2
Slewing speed, rpm	8.3
Gradeability	70%/35°
Ground pressure, kPa	75.3
Digging force of bucket, kN	247
Digging force of bucket rod, kN	218

Operating range (mm)

Standard



	SY395H
a. Maximum digging height	9980
b. Maximum unloading height	6960
c. Maximum digging depth	7045
d. Maximum digging distance	10920
e. Minimum slewing radius	4750
f. Maximum height at minimum slewing radius	8785
g. Maximum digging depth with vertical boom	4710

SANY Heavy Machinery Co., Ltd.

SANY Industrial Park, Dongcheng Avenue, Kunshan Economic & Technological Development Zone, Jiangsu Province

Post code: 215300

After-sales service hotline: 4008-28-2318

Consulting & complaint hotline: 4008-87-9318



Note

The documents and technical specification will be changed without further notice due to continuous technical improvement. The machine in the picture might include additional equipment.

ZJSYX0604CH (August, 2017)

Printed in CHINA