



SY500H

NEW CHANGE

KING OF MINING EQUIPMENT
ASSET OF GREAT VALUE



SELLING POINTS

● SUPERIOR PERFORMANCE

The engine designed for large mining realized the high efficiency and low consumption, working efficiency up by 8% and fuel consumption down by 10%, strengthen digging force optimized the operation performance.

● LONG-TIME USAGE

Five part and core assembly service life improved greatly relying on trinity experiment system assures the machine can working more than 20000h in mining condition.

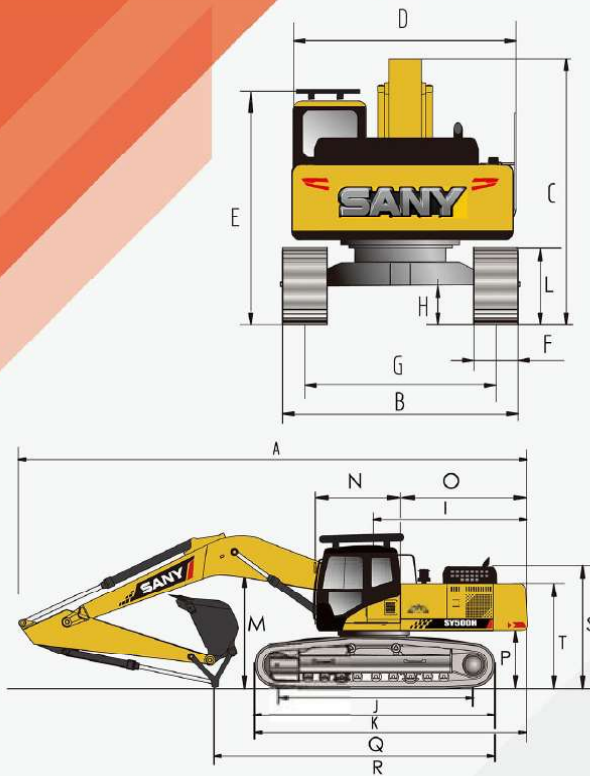
● EXCELLENT ADAPTABILITY

Over 20 special working device are optional, multistage filtration system provide the engine safest protection, independent oil radiator makes the machine working in a optimum temperature all the time.

● LOW COST OF MAINTENANCE

The parts are easy to change and maintain and the cost down by 50%; the maintenance period up by 100% by using high-quality oil and filter element.

Item(Unit:mm)

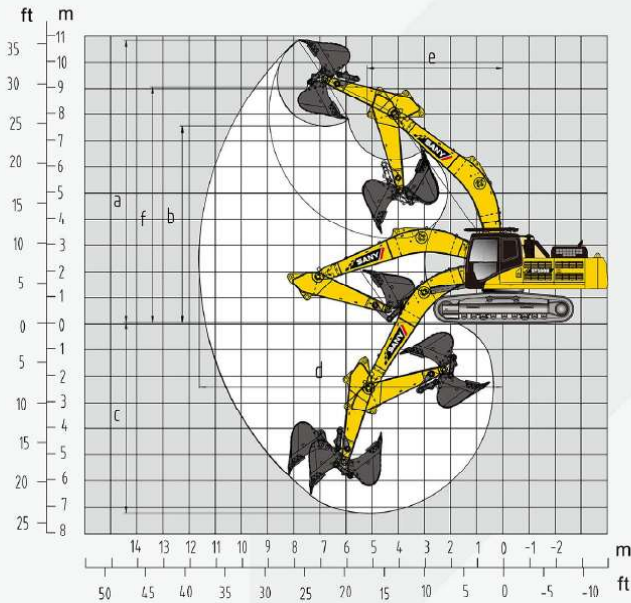


	SY500H
A Length(During Transportation)	12095
B Width(Transporting/Operating)	3360
C Height(During Transportation)	3790
D Uper body Width	3290
E Blade Height	3470
F Standard Track Shoe Width	600
G Track Gauge(Transporting/Operating)	2740
H Min Ground Clearance	560
I Tail Rotating Radius	3765
J Track Ground Contact Length	4415
K Track Length	5440

PerformanceParameter

	SY500H
Operating Weight	49500
Bucket Capacity m ³	2.2~3.1
Rated Power KW/rpm	300/1800
Traveling Speed(High/Low) km/h	5.4/3.1
Rotating speed rpm	8.0
Gradeability	70%/35°
Ground Pressure(KPa)	87.1
Bucket Digging Force KN	287
Arm Digging Force KN	245

Operation Range



	SY500H
A Max. Digging Height	10950
B Max. Unloading Height	7450
C Max. Digging Depth	7490
D Max. Excavating Distance	11860
E Min. Rotating Radius	5240
F Max. Height at Min. Rotating Radius	9100

Shanghai Sany Heavy Machinery(LTD)

Adress: Sany Heavy Machinery Industrial Park, Pingan town,
Fengxian District, Shanghai, China
Zip Code:201413
Service Hotline: 4008-28-2318
Inquiring and Complaint Number: 4008-87-9318
Web: <http://www.sany.com.cn>



Note:

Material and specifications are subject to change without notice.
Feature machines in photos may include additional equipment.

ZJSYX0604CH(January 2016) Printed in CHINA