

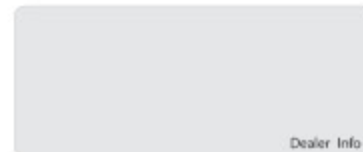


MATERIAL HANDLING MACHINE



SANY Industrial Park, Gaolan Port Economic and Development Zone,
Zhuhai, Guangdong, China

Tel +86-756-7266963 Service +86-4008-87-8318



Dealer Info



© Printed in China Code: 2011-SMH

SANY Material Handling Machine

The material handling machine has been widely used in steel plants, ports, stacking yards and warehouses to load or stack steel scrap and bulk cargoes as well as to pick up, hoist or cut materials. SANY Material Handling Machine has been applied multiple in-house developed technologies in the areas of energy saving and control, hydraulic linkage, anti-rollover protection, malfunction automatic detection and data real-time display to back up the world leading performance.

Faster Operation

Equipped with Kawasaki large displacement main pump, high efficiency main valve and reducer, can realize fast operation.

Wider Application

Excellent load capacity and optional boom length, adapt to a wider range of operating conditions.

Stronger Power

high torque engine and motor, adopted mature chassis, reliable structure.

More Savings

Controller has positive flow hydraulic system. Engine match with main pump perfectly and energy consumption reduced by 10%.



SMHW30



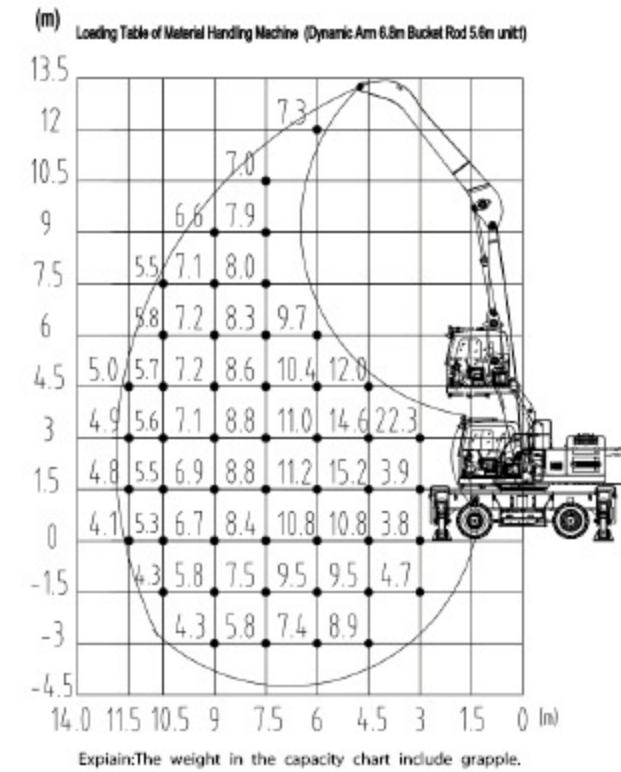
Brief Introduction

Sany 30t Material Handling machine mainly apply to various bulk cargoes grab operation. The whole machine is light and flexible, stable, efficient.

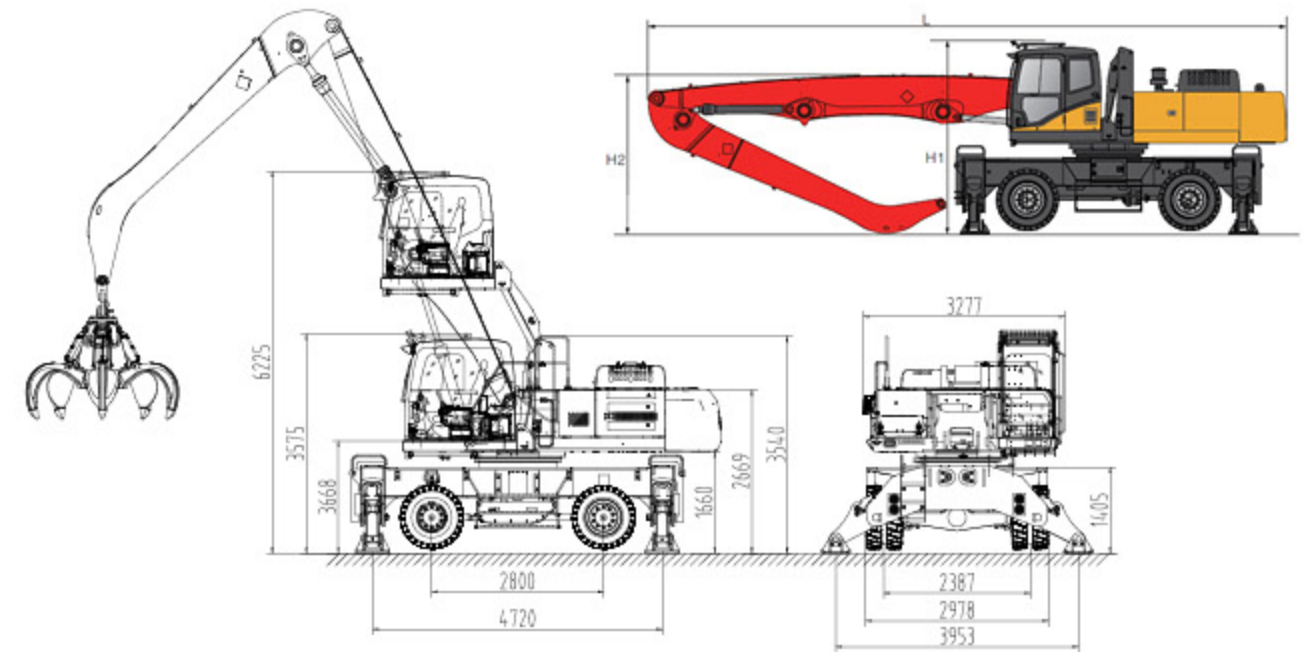
CONFIGURATION PARAMETER

Power system	Engine	Model	Mitsubishi D06FRC-TAA
		Power	147kW/2100rpm
		Torque	750Nm//1350rpm
		Emission	CHN III
		Oil tank	465L
Chassis	Tread width	2387mm	
	Wheelbase	2800mm	
	Vertical span	4720mm	
	Horizontal span	3953mm	
	Turning radius	8600mm	
	Maximum travel speed	20km/h	
Hydraulic system	Control type	Electronic control positive flow system	
	Main pump	Model	Rexroth A28VO130E71CPB/10DRVG3R12F1B2S40-0
		Rated flow	2X260L/min
	Main valve	Kawasaki KMX15RB/B45606-EV1	
	Reducer	Sauter GS14D20C.0	
	Movable boom cylinder	Hengli JSY26.5-DB	
	Stick cylinder	Zhongxing ZX200.3.1B	
	Maximum system pressure	32MPa	
Hydraulic circuit	230L		
Slewing mechanism	Slewing bearing	Sauter SSF1405/40CWH II	
	Maximum slewing speed	8rpm	
Operation Cabin	Lifting height	2650mm	
Operation basic parameter	Boom specification	Length	12m
		Maximum working radius	11.5m
		Maximum working height	12m
	Maximum working depth	-3 m	
	Theoretical load on maximum radius point(including grab)	5t	

Working range



The diagram of dimension



	The length of movable hinge point	The length of stick point	L	H1	H2
Boom combination(standard)	6.8m	5.6m	5.85m	3.61m	3m

SMHC35



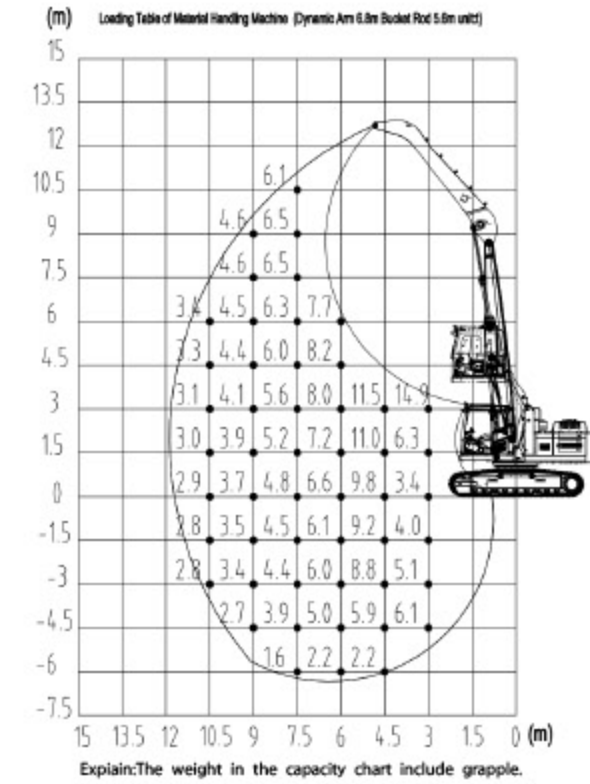
Brief Introduction

Sany 35t Material Handling machine mainly apply to grab and loading or unloading operation for waste steel and bulk, with high efficiency, super high performance, safety and reliability.

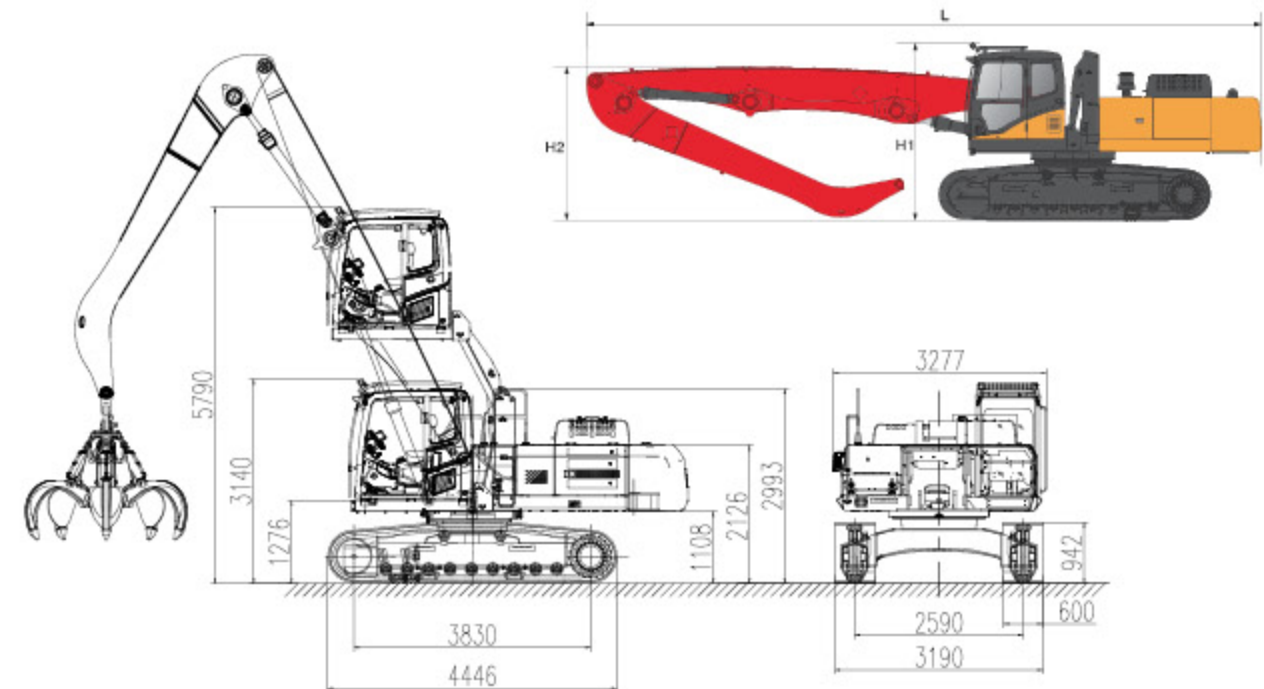
CONFIGURATION PARAMETER

Power system	Engine	Model	Mitsubishi D06FRC-TAA
		Maximum power	147kW/2100rpm
		Maximum torque	750Nm//1350rpm
		Emission	CHN III
		Oil tank	465L
Moving system	Working rail span	2590mm	
	Tread width	3830mm	
	Track width	600mm	
	Maximum travel speed	5km/h	
Hydraulic system	Control type	Electronic control positive flow system	
	Main pump	Model	Kawasaki K7V125DTP1N9R-0E05-1V
		Rated flow	2X260L/min
	Main valve	Kawasaki KMX15RB/B45217A-V	
	Reducer	Sauter GS14D20C.0	
	Movable boom cylinder	Hengli JSY26.5-DB	
	Stick cylinder	Zhongxing ZX200.3.1B	
	Maximum system pressure	32MPa	
Hydraulic oil tank	230L		
Slewing mechanism	Slewing bearing	Sauter SSF1405/40CWH II	
	Maximum slewing speed	8rpm	
Operation cabin	Lifting height	2650mm	
Operation basic parameters	Boom specification	12m	
		Maximum working radius	10.5m
	Maximum working height	10.5m	
	Maximum working depth	-6m	
	Theoretical load on maximum radius point(including grab)	3.4t	

Working range



The diagram of dimension



	The length of movable hinge point	The length of stick point	L	H1	H2
Boom combination(standard)	6.8m	5.6m	10.4m	3.14m	2.58m

SMHC45



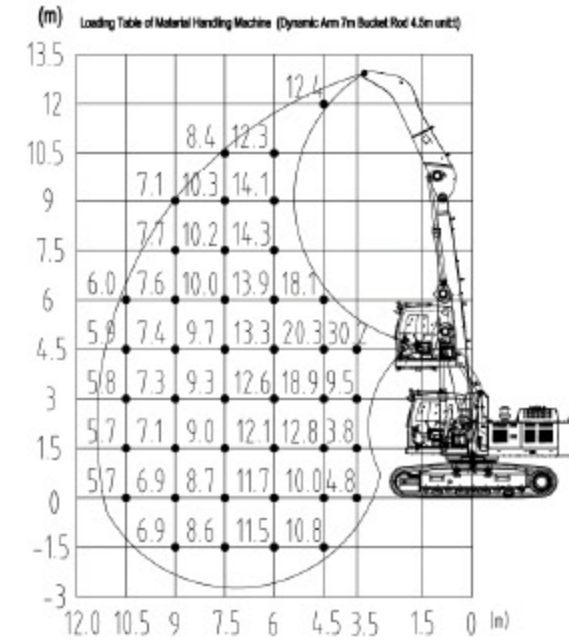
Brief Introduction

Sany 45t Material Handling machine mainly apply to grab and loading or unloading operation for waste steel and bulk, with high efficiency, super high performance, safety and reliability.

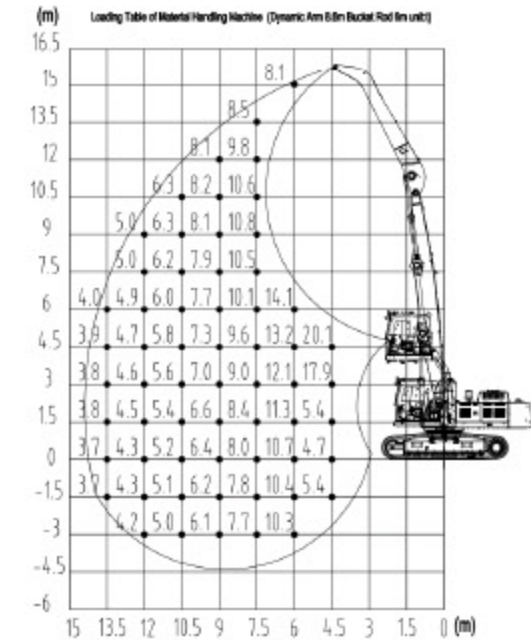
CONFIGURATION PARAMETER

Power system	Engine	Model	ISUZU 6HK1-XDHAG-01-C3			
		Maximum power	212kW/2000rpm			
		Maximum torque	1080Nm//1500rpm			
		Emission	CHN III			
		Oil tank	540L			
Moving system	Working rail span		2590mm			
	Tread width		4140mm			
	Track width		600mm			
	Maximum travel speed		5km/h			
Hydraulic system	Control type		Electronic control positive flow system			
	Main pump	Model	Kawasaki K5V160DTH15XR-9T46-BV			
		Rated flow	2X320L/min			
	Main valve		Kawasaki KMX15RB/B45606-EV1			
	Reducer		Kawasaki M5X180CHB-10A-6RA/265-RG20D25			
	Movable boom cylinder		Zhongxing ZXSMHW40.1.3			
	Stick cylinder		Zhongxing ZXWMHW40.1.4			
	Maximum system pressure		32MPa			
Hydraulic oil tank		340L				
Slewing mechanism	Slewing bearing		Sauter SSF1405.50CWHII			
	Maximum slewing speed		8rpm			
Operation cabin	Lifting height		2650mm			
Operation basic parameters	Boom specification		11m		14m	
			Movable boom: 7m		Movable boom: 8.6m	
			Stick: 4.5 m		Stick: 6m	
	Assembly hinge point of boom in the slewing platform		Upper hinge point	Nether hinge point	Upper hinge point	Nether hinge point
	Maximum working radius		10.5m	10.5m	13.5m	13.5m
	Maximum working height		10.5m	12m	13.5m	15m
Maximum working depth		-3m	-1.5m	-6m	-3m	
Theoretical load on maximum radius point(including grab)		6t	6t	3.9t	4t	

Working range

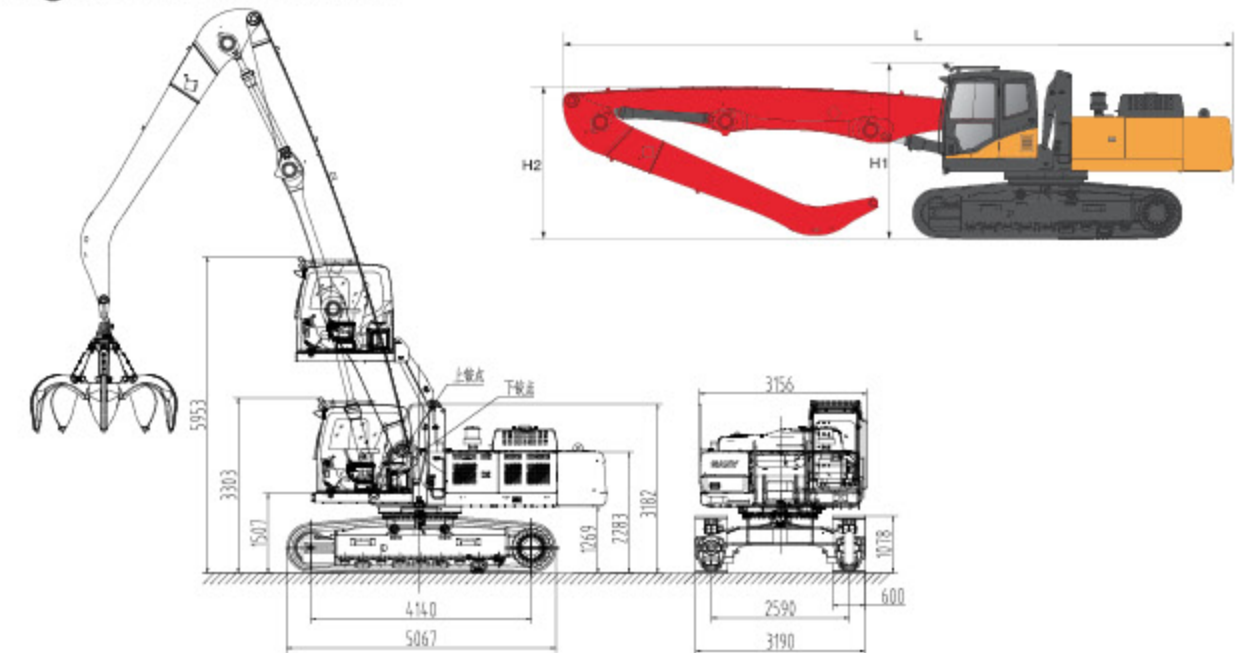


Explain: The weight in the capacity chart is the load when arm is installed at the lower hinge point. The weight in the capacity chart include grapple.



Explain: The weight in the capacity chart is the load when arm is installed at the lower hinge point. The weight in the capacity chart include grapple.

The diagram of dimension



	The length of movable hinge point	The length of stick point	L	H1	H2
Boom combination 1	7m	4.5m	11m	3.31m	2.76m
Boom combination 2	8.6m	6m	12.58m	3.31m	2.76m

SMHW48



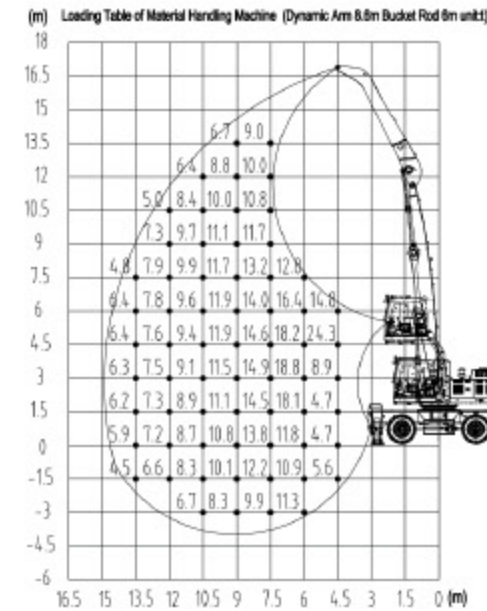
Brief Introduction

Sany 48t Material Handling machine widely apply to loading and unloading bulk material at railway or river terminals, with various boom combination option to meet different working conditions, wider working range, high efficiency.

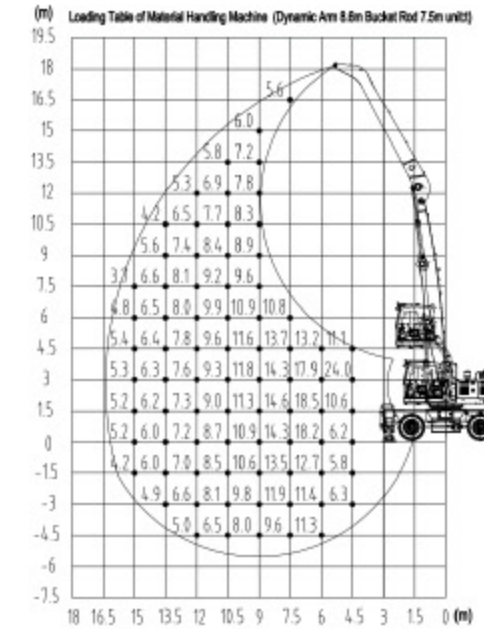
CONFIGURATION PARAMETER

Power system	Engine	Model	ISUZU 6HK1-XDHAG-01-C3									
		Power	212kW/2000rpm									
		Torque	1080Nm//1500rpm									
		Emission	CHN III									
		Oil tank	540L									
Power system	Tread width	2445 mm										
	Wheelbase	3200mm										
	Vertical span	5300mm										
	Horizontal span	4600mm										
	Turning radius	6000mm										
	Maximum travel speed	20km/h										
Hydraulic system	Control type	Electronic control positive flow system										
	Main pump	Model	Kawasaki K5V160DTP1X7R-0E40-BV									
		Rated flow	2X320L/min									
	Main valve	Kawasaki KMX15RB/B45606-EV1										
	Reducer	Kawasaki M5X180CHB-10A-6RA/265-RG20D25										
	Movable boom cylinder	Zhongxing ZXSMHW40.1.3										
	Stick cylinder	Zhongxing ZXWMHW40.1.4										
	Maximum system pressure	32MPa										
Hydraulic oil tank	340L											
Slewing mechanism	Slewing bearing	Kawasaki SSF1405.50CWHII										
	Maximum slewing speed	8rpm										
Operation cabin	Lifting height	2650mm										
Operation basic parameters	Boom specification	14m		16m		17m		18m		20m		
		Movable boom: 8.6m	Movable boom: 8.6m	Movable boom: 9.6m	Movable boom: 10.5 m	Movable boom: 10.5 m	Movable boom: 10.5 m	Movable boom: 10.5 m	Movable boom: 10.5 m	Movable boom: 10.5 m	Movable boom: 10.5 m	
		Stick: 6m	Stick: 7.5m	Stick: 7.5m	Stick: 7.5m	Stick: 7.5m	Stick: 7.5m	Stick: 7.5m	Stick: 7.5m	Stick: 9.5m		
	Assembly hinge point of boom in the slewing platform	Upper hinge point	Nether hinge point	Upper hinge point	Nether hinge point	Upper hinge point	Nether hinge point	Upper hinge point	Nether hinge point	Upper hinge point	Nether hinge point	
	Maximum working radius	13.5m	13.5m	15m	15m	16.5 m	16.5m	16.5m	16.5m	19.5 m	18m	
	Maximum working height	12m	13.5m	12m	16.5m	13.5m	16.5m	15m	16.5m	16.5 m	18m	
	Maximum working depth	-4.5m	-3 m	-6m	-4.5 m	-6m	-4.5 m	-6m	-4.5 m	-9m	-6m	
Theoretical load on maximum radius point(including grab)	6.4t	6.4t	5.3t	5.4t	4.4t	4.4t	4.4t	4.5t	3.1t	3.8t		

Working range

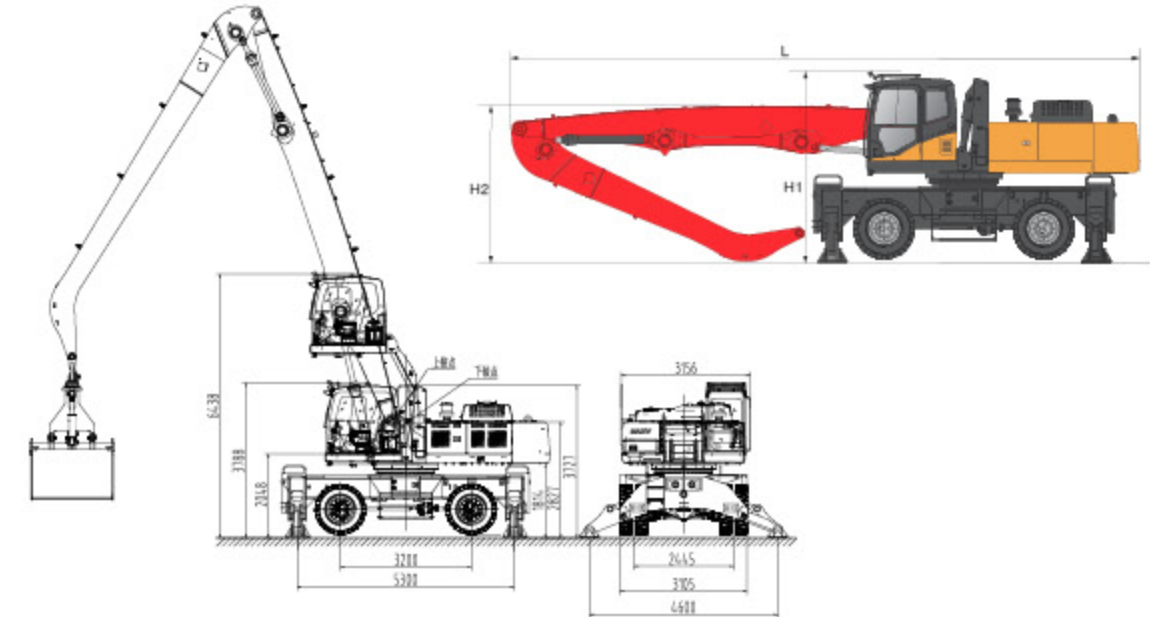


Explain:The weight in the capacity chart is the load when arm is installed at the lower hinge point. The weight in the capacity chart include grapple.



Explain:The weight in the capacity chart is the load when arm is installed at the lower hinge point. The weight in the capacity chart include grapple.

The diagram of dimension



	The length of movable hinge point	The length of stick point	L	H1	H2
Boom combination 1	8.6m	6m	12.24m	3.708m	3m
Boom combination 2	9.6m	7.5m	13.32m	3.708m	5.2m
Boom combination 1	10.5 m	9.5m	14.23m	3.708m	6.1m

SMHC50-D



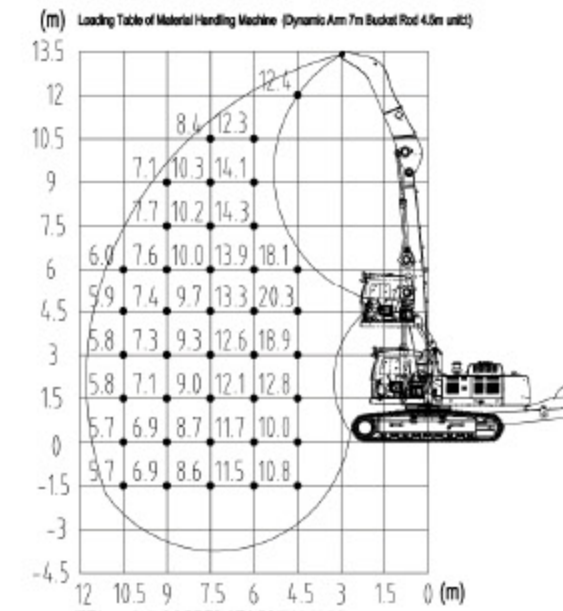
Brief Introduction

Sany 50D Materials Handler is pure electric machine. Equipped with different grabs to apply to the loading and unloading of bulk materials and waste steel. Driving by motor, zero exhaust, more environmental and saving 50% cost comparing internal combustion engine machine.

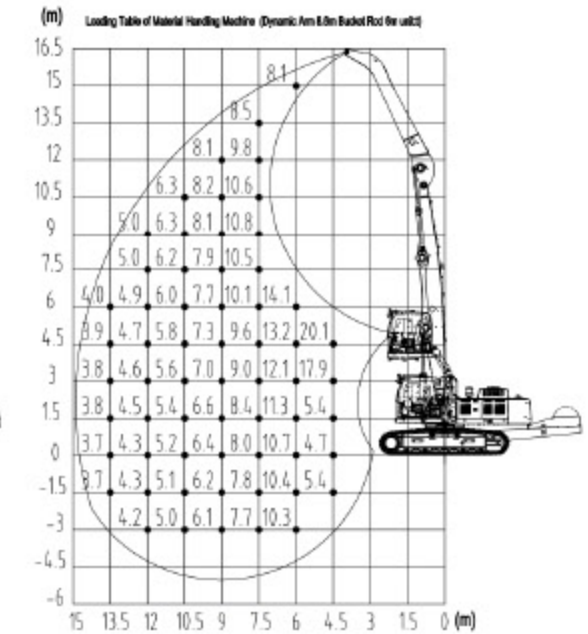
CONFIGURATION PARAMETER

Power system	Motor	Model	Chang Diantou			
		Rated power	160kW/1480rpm			
		Voltage	380V, 50Hz			
		Start type	Soft Start			
Moving system	Working rail span		2590mm			
	Tread width		4140mm			
	Track width		600mm			
	Maximum travel speed		5km/h			
Hydraulic system	Control type		Electronic control positive flow system			
	Main pump	Model	Kawasaki K5V200DTH1X5R-OE30-BV			
		Rated flow	2X390L/min			
	Main valve		Kawasaki KMX15RB/B45606-EV1			
	Reducer		Kawasaki M5X180CHB-10A-6RA/265-RG20D25			
	Movable boom cylinder		Zhongxing ZXSMHW40.1.3			
	Stick cylinder		Zhongxing ZXWMHW40.1.4			
Slewing mechanism	Maximum system pressure		32MPa			
	Hydraulic oil tank		340L			
	Slewing bearing		Sauter SSF1405.50CWHII			
Operation cabin	Maximum slewing speed		8rpm			
	Lifting height		2650mm			
Operation basic parameters	Boom specification		Movable boom: 7m		Movable boom: 8.6m	
			Stick: 4.5 m		Stick: 6m	
	Assembly hinge point of boom in the slewing platform		Upper hinge point	Nether hinge point	Upper hinge point	Nether hinge point
	Maximum working radius		10.5m	10.5m	13.5m	13.5m
	Maximum working height		10.5m	12m	13.5m	15m
	Maximum working depth		-3m	-1.5m	-6m	-3m
Theoretical load on maximum radius point(including grab)		6t	6t	3.9t	4t	

Working range

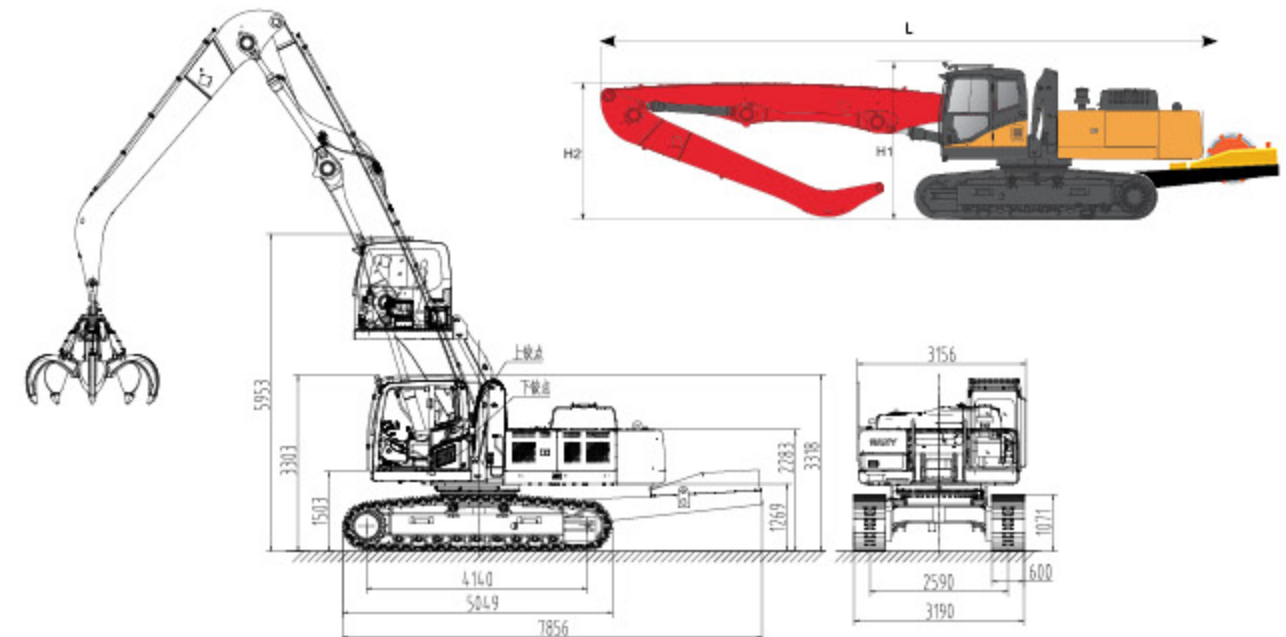


Explain: The weight in the capacity chart is the load when arm is installed at the lower hinge point. The weight in the capacity chart include grapple.



Explain: The weight in the capacity chart is the load when arm is installed at the lower hinge point. The weight in the capacity chart include grapple.

The diagram of dimension



	The length of movable hinge point	The length of stick point	L	H1	H2
Boom combination 1	7m	4.5 m	12.8m	3.31m	2.76m
Boom combination 2	8.6m	6m	14.38m	3.31m	2.76m

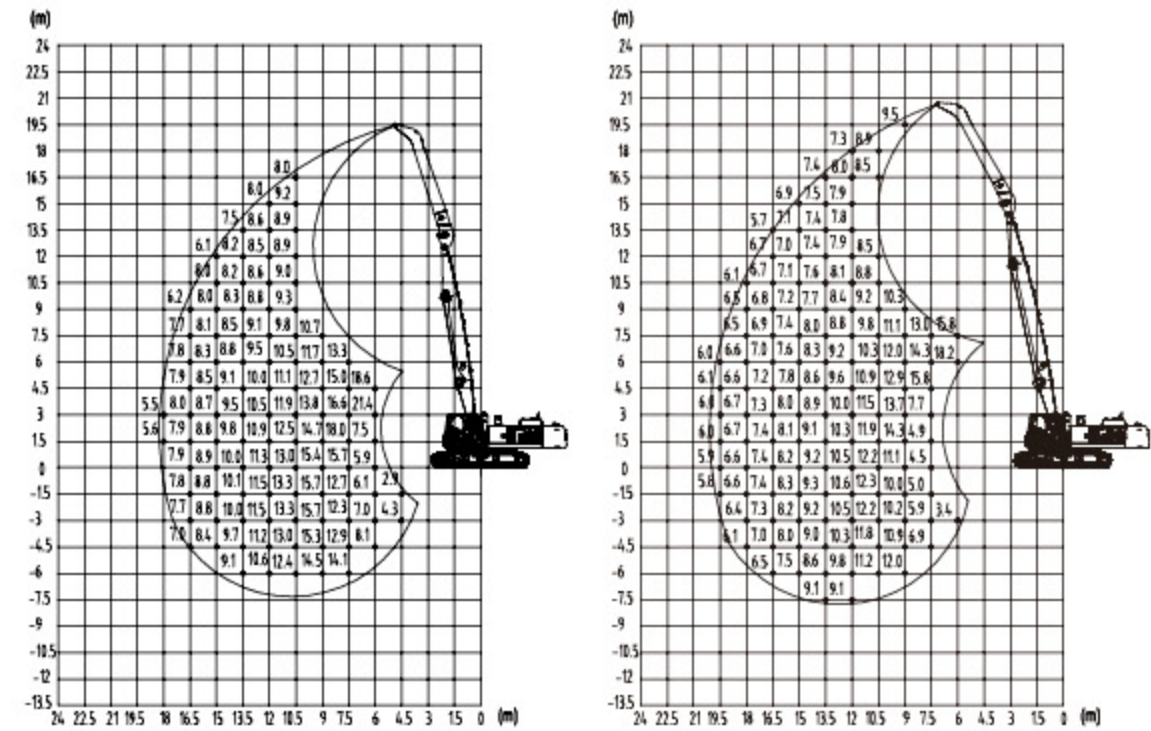
SMHC70



Brief Introduction

Sany 70t Material Handling machine equips with dual powers, mainly apply to bulk materials loading and unloading in river terminals. It has big double shell grab and various boom combination, working wider range, high efficiency, unloading completely.

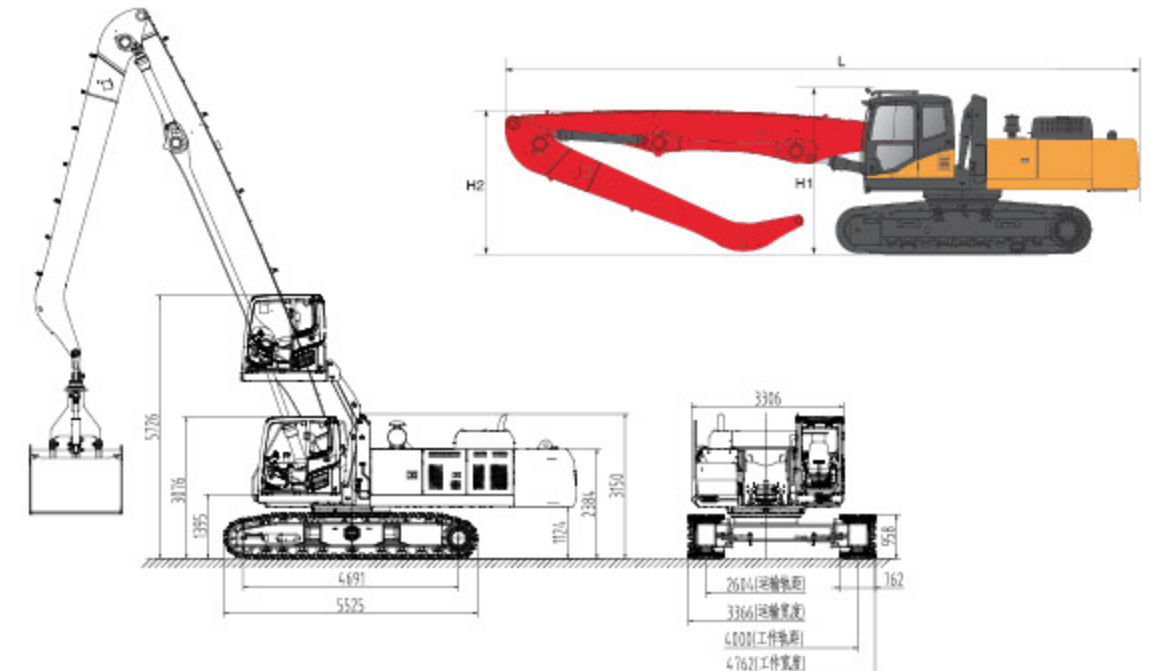
Working range



CONFIGURATION PARAMETER

Power system	Engine	Model	CUMMINS QSL8.9-C360-30	
		Maximum power	264kW/2100rpm	
		Maximum torque	1500Nm/1500rpm	
		Emission	CHN III	
	Motor	Oil tank	600L	
		Model	Chang Diantou Y250-380-407	
		Rated power	250kW/1490rpm	
		Voltage	380V, 50Hz	
	Start type	Soft starting		
Moving system	Working rail span		4000mm	
	Tread width		4691mm	
	Track width		762mm	
	Maximum travel speed		3km/h	
Hydraulic system	Control type		Electronic control positive flow system	
	Main pump	Model	Engine connect pump: Kawasaki K5V200DTH1X5R-OE30-BV Motor connect pump: Kawasaki K3V280DTH1GZR-OE82-BVB	
		Rated flow	Working with engine : 2X390L/min Working with motor: 2X417L/min	
	Main valve		Park M02560PH-A	
	Reducer		Kawasaki MSX250CHB-10A-15A/275-RG27D25E	
	Movable boom cylinder		Zhongxing ZXSMHC70.8.3.1	
	Stick cylinder		Zhongxing ZXSMHW40.1.3	
	Maximum system pressure		34.3MPa	
	Hydraulic oil tank		500L	
	Slewing mechanism	Slewing bearing		Sauter S5f1530/60CWHV
Maximum slewing speed		8rpm		
Operation cabin	Lifting height		2650mm	
Operation basic parameters	Boom specification	18m	20m	
		Movable boom: 10.5 m	Movable boom: 12.5 m	
		Stick: 7.5 m	Stick: 7.5m	
	Maximum working radius	16.5m	19.5m	
	Maximum working height	15m	19m	
	Maximum working depth	-7.5m	-7.5m	
Theoretical load on maximum radius point(including grab)		8.0t	6.1t	

The diagram of dimension



	The length of movable hinge point	The length of stick point	L	H1	H2
Boom combination 1	10.5m	7.5m	15300mm	3140mm	6800mm
Boom combination 2	12.5m	7.5m	17560mm	3140mm	6230mm

OPTIONAL ATTACHMENTS



Plum blossom grab



Double shell grab



Wood log grab

Grab configuration						
Material type		Density (t/m ³)	Grab type	Grab model	Capacity (m ³)	Weight (t)
Waste material	Steel, rubber	1	Plum blossom grab	SLM1000	1	2.12
Super light density material	Fertilizer, fodder	0.6	Double shell grab	SLS5006	5	2.97
Light density material	Coal	0.8	Double shell grab	SLS3508	3.5	2.77
Middle density material	Sand, grit	1.6	Double shell grab	SLS2525	2.5	2.42
Strong density material	Iron ore	2.4	Double shell grab	SLS1525	1.5	2.34
Wood log	3m long	0.8	Wood log grab	SWY2000	2m ²	2.06

The data above maybe be changed due to constant update of technology. The specific parameters shall be subject to the contract.

Shots from the Steel Factories



Masteel Group



Benxi Steel Group



Shougang Group



Hunan Valin Steel (Xiangtan)



Taiwan Iron and Steel Group



Jianlong Steel

Shots from the Railway



Shots from the Ports



Shots from the Jobsites



Australia



Guangxi, China



Russia



Liaoning, China



Henan, China



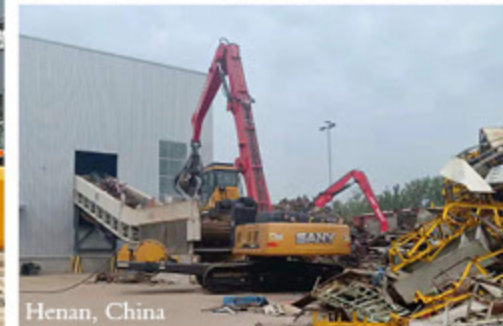
Jiangsu, China



Hebei, China



Changzhou, China



Henan, China



Tianjin, China



Guizhou, China

Shots from the Jobsites



SERVICE

Carefree Service



品质改变世界 服务创造价值
Quality Changes the World Service Creates value



Support Service: **+86-4008-87-8318**

Service vision:

Exceed customer expectation and industry standards.

Service mission:

All for client, create value for customer

Service commitment:

- (1) Reply customer within 15 minutes.
- (2) Reach main service area within 2 hours.
- (3) Solve general problems and provide regular parts within one day.
- (4) Solve customer complaints with two days.
- (5) Solve all issues within 7 days.

Service value:

Innovation、Excellence、Clients、Cooperation、Respect、Passion、Honesty、Responsibility

Service advantage:

“Professional service power” : Sany has offices in over 200 countries and regions, with 11 subsidiaries and 35 service points in domestic together. Setting up the parts warehouse can cover the world range, Forming the four in one of parts supply and guarantee system by headquarters warehouse, regional center warehouse, provincial and prefecture-level city, Accommodating 80000 kinds of parts to ensure fully customer service requirements in time.

“Professional operation and maintenance system” : Sany has invested tens of million of RMB to build “Sany Customer cloud APP” ,which enable customers to monitor the running status and parameters of the equipment in real time anywhere in the world. In addition, it provides online consultation, community communication, accessories mall, one-click repair, maintenance reservation, product knowledge learning and other value-added service. So the customer can easily enjoy the highest quality of service in any place of the world.

