



# SCC4000A-2

## SANY Crawler Crane 400 Tons Lifting Capacity

Quality Changes the World



**Max. lifting moment: 5280t·m**

**Longest boom: 84m**

**Longest boom +jib: 84m + 84m**

The parameters and diagrams in the brochure are only for reference, which are subject to further update in real machine.

■ [www.sanyglobal.com](http://www.sanyglobal.com)



**Crawler Crane Series**  
**SCC4000A-2**

P03	Main Characteristics	<ul style="list-style-type: none"> <li>▪ Product Specification</li> <li>▪ Safety Devices</li> </ul>
P09	Technical Parameters	<ul style="list-style-type: none"> <li>▪ Major Performance &amp; Specifications</li> <li>▪ Outline Dimension</li> <li>▪ Transport Dimensions</li> <li>▪ Transport Plan</li> <li>▪ Transport Details</li> <li>▪ Self-Assembly Plan</li> </ul>
P26	Cofigurations	<ul style="list-style-type: none"> <li>▪ Configurations</li> <li>▪ H Configuration</li> <li>▪ HDB Configuration</li> <li>▪ HJ Configuration</li> <li>▪ HJDB Configuration</li> <li>▪ HJFJ Configuration</li> <li>▪ FJh Configuration</li> <li>▪ LJ Configuration</li> <li>▪ LJDB Configuration</li> </ul>



**SCC4000A-2**  
**SANY CRAWLER CRANE**  
**400 TONS LIFTING CAPACITY**

QUALITY CHANGES THE WORLD

## Main Characteristics

- Page 04 Product Specification
- Page 07 Safety Devices



## Product Specification



### Cab

- Outlook: The outlook of the cab, designed by Porsche, is novel and of brand awareness. Sliding door makes operation more convenient. The fully-enclosed steel frame structure is fitted with large-scaled glass of high strength, at the front, sides and top. The cab is featured with bright and spacious interior.
- Comfortability: Multimode and multilevel adjustable seat (including damping, noise reduction, and suspension type) is available, providing the most comfortable driving experiences for the operator. The reasonable arranged air vents of the AC make the temperature inside the cab down from 55°C to 27.5°C within 20 mins. There are control lever, control button and ignition lock fitted in the right and left armrest box and assisting control box, all designed with Ergonomics for comfortable operation experience. The control box can be adjusted at ease with the seat; The cab can tilt up 25° for operation requirement and rotate to the front of platform for easy transport.

### Engine

- Cummins QSM 11 (Euro Tier-III emission standard)
- Rated power: 298kW.
- Rated speed: 1,800rpm.
- Max. output torque: 1898N·m.
- Speed at maximum output torque: 1,400rpm.

### Main and Aux. Hoisting Mechanism

- A variable hydraulic motor drives the planetary gear reducer to control the load lifting and lowering of main and aux. hoist winches. A good inching performance is provided. The high-speed mode can realize main and aux. load lifting faster.
- Variable hydraulic motor can realize max. winch speed through adjustment based on electricity flow.
- High-quality spin-resistance wire rope to make sure high safety and longer service life.
- Fold-line machined drum provides high precision and good reliability, making sure the wire rope won't get messy.
- The wire rope lug adopted to make wire rope assembly easier and faster.

Main load hoist mechanism	Drum diameter	666mm
	Rope speed on the outermost work layer	0~140m/min
	Steel rope diameter	26mm
	Steel rope length of main load hoist	800m
	Rated tension of single rope	15t
Aux. load hoist mechanism	Drum diameter	666mm
	Rope speed on the outermost work layer	0~140m/min
	Steel rope diameter	26mm
	Steel rope length of aux. load hoist	800m
	Rated tension of single rope	15t

### Boom/Jib/Hoist Mechanism

- Including: luffing mechanisms of the boom, jib and superlift;
- Drums with fold-line grooves are adopted for all luffing devices. Hydraulic motor drives the planetary gear reducer with excellent infinitely variable displacement to realize multi-functions.

Boom hoist mechanism	Drum diameter	641mm
	Rope speed on the outermost work layer	(0~65)×2m/min
	Steel rope diameter	26mm
	Steel rope length of boom hoist	550m
Jib luffing mechanism	Drum diameter	641mm
	Rope speed on the outermost work layer	0~100m/min
	Steel rope diameter	26mm
	Steel rope length of jib luffing	660m
Superlift mast luffing	Drum diameter	641mm
	Rope speed on the outermost work layer	0~100m/min
	Steel rope diameter	26mm
	Steel rope length of superlift luffing	860m



## Product Specification

### Slewing Mechanism

- Dual-motor is adopted for the swing hydraulic system to drive the spur gear drive through a planetary gear reducer and enables 360° rotation. The swing speed is 0--1.5rpm, which is infinitely variable. The swing, free of starting and stopping impact, operates steadily and is equipped with neutral free slipping function. Slewing bearing is three-cylindrical roller bearing with external engagement.

### Base

- The hydraulic cylinder drives power pin to be connected with track frame to facilitate the assembly and disassembly. Frame structures are welded by high-strength steel. Larger chassis design greatly improves the stability of the crane. The self-assembled center counterweight is 40t, with 20t at both front and the rear.

### Track Assembly

- Track frame: each track frame is equipped with an independent travel driving device. A hydraulic travel motor drives the planetary gear reducer and realizes independent traveling through the transmission of driving wheel. The travel system is configured with high and low speeds: sufficient traction is provided in low speed to realize 100% pick and carry, while faster job-site transfer is possible in high travel speed. Infinite variable speed can be realized in travel driving system.
- Track shoe: it is manufactured by advanced casting techniques and materials with high strength and good wear resistance. After assembled on the machine, the tension can be adjusted by a hydraulic jack with shims used to secure the crawler position.

### Counterweight

- Counterweight include carbody counterweight , rear counterweight, superlift counterweight, and the details are listed below:

Name	Quantity	Length (m)	Width (m)	Height (m)	Unit Weight (t)
Center counterweight	4	5.80	1.70	0.33	10
Rear Counterweight(10t)	12	2.85	2.40	0.49	10
Rear Counterweight Tray	2	3.20	2.83	1.80	15
Superlift Counterweight (10t)	24	2.85	2.40	0.49	10
Superlift Counterweight Tray	1	9.95	2.70	2.20	10

### Operation equipment

- High-strength steel tubes and plates are adopted, and the boom/jib top and the hooks are installed with milled welded steel sheaves.

### Boom

- The boom is a spatial lattice structure with equal section areas for inserts and tapered section areas for both ends. With pipes welded together, and boom tip and root strengthened with steel plates, it can better transfer the load.
- The length of the boom ranges from that (24m) of the base boom to the maximum length (84m).
- Composition: boom base 12m×1, tapered insert 10.5m×1, connecting section (boom top) 1.5m×1, insert section 6m×2, and insert section 12m×4.
- The extension jib shall be installed on the boom top.

### Short Heavy Jib( for wind energy and shield lifting)

- The fixed jib is a spatial lattice structure with equal section areas for inserts and tapered section areas for both ends. With pipes welded together, and boom tip and root strengthened with steel plates, it can better transfer the load. The jib is 9m long and can be used for both wind energy and shield lifting.
- Composition: Jib base 4.5m×1, Jib top 4.5m×1.

## Product Specification



### Luffing Jib

- The luffing jib is a spatial lattice structure with equal section areas for inserts and tapered section areas for both ends. With pipes welded together, and boom tip and root strengthened with steel plates, it can better transfer the load.
- The length of the luffing jib ranges from 24m to 84m, increased by every 6m.
- Composition: jib base 10.5m×1, tapered insert 6m×1, jib insert 6m×2, jib insert 12m×4, jib top 7.5m×1.
- The extension jib shall be installed on the luffing jib top.

### Superlift Device

- The superlift mast is a spatial lattice structure with equal section areas for inserts and tapered section areas for both ends. With pipes welded together, and boom tip and root strengthened with steel plates, it can better transfer the load.
- The superlift mast is 30m long.
- Composition: mast base 12m×1, insert section 6m×1, and mast top 12m×1.

### Hook

- 5 kinds of hooks are available, and specific parameters are as follows:

Name of Hook	Max. Lifting Capacity	Quantity	Pulleys	Unit Weight (t)
400t hook	400t	1	2×9	10.9
260t hook	260t	1	9	5.2
160t hook	160t	1	5	3.1
50t hook	50t	1	1	1.7
16t ball hook	16t	1	-	0.9

### Hydraulic System

- The whole hydraulic system includes that of hoisting, traveling, slewing, luffing, servo, back-stop, cooling system, and auxiliary hydraulic system. Major hydraulic components are of famous brand.
- Features: lifting, traveling, luffing, and slewing hydraulic systems are applied with open circuits, which has advantages such as energy saving, high efficiency, instant responsiveness, low heat generation and long service life.
- Electrically-controlled proportional control components are adopted for the servo system to realize precise and intelligent control.
- External controlled and outflow balance valve is adopted for the back-stop system, which ensures the safety and reliability.
- The cooling hydraulic system is featured with large heat exchange power and good cooling effect.

### Operating Weight

- The operating weight is about 340t, including the upperworks, lowerworks, rear counterweight of basic machine, carbody counterweight, 24m basic boom and 400t hook.

### Ground Pressure

- The average ground pressure of machine with basic boom is 0.16MPa.

### Gradeability

- The gradeability of machine with basic boom is 15%.



## Safety Devices

### Load Moment Limiter

- The proprietary load moment limiter independently developed by Sany is adopted, which forms a network with other controllers through CAN bus line, so as to realize safe and reliable control. The load moment limiter can automatically detect the hoisting weight of the crane and the angle of the boom, and display the rated load capacity, actual load, working radius, and the allowable height of the hook.
- The load moment limiter system consists of a large-screen color display, a host computer, angle sensors, tension sensors, pressure sensors and other components.

### Over-hoist Protection of the Main and Auxiliary Hooks

- It is used to prevent the over-hoist of the hook. When the lifting hook is raised to a certain height, the limit switch will start working, and hook will be automatically cut off from moving up by the control system. Meanwhile, the display and the buzzer will give alarms. At this moment, only hook lowering is allowed to prevent over-hoist action.

### Over-release Protection Device of the Main and Auxiliary Hook

- It is used to prevent the wire rope over-release. When the wire rope is released to the last three wraps, the limit switch will start working, and the releasing of rope will be automatically stopped by the control system. Meanwhile, the display and the buzzer will give alarms. At this moment, only rope retraction is allowed to prevent over release action.

### Assembly/Work Mode Switchover

- In Assembly Mode, some of the safety devices cannot function properly, such as jib limit, boom angle limit in LML, and overload, so as to facilitate the crane assembly.
- In Work Mode, all safety devices can function properly.

### Boom Angle Limit

- When the elevation angle of the boom exceeds 85° or jib angle exceeds 75°, corresponding limit switch will be triggered, and the control system will automatically cut off the boom hoisting. Meanwhile, the display and the buzzer will give alarm. At this moment, boom/jib luffing winch won't hoist but it can still lower down.
- When the boom down angle is less than 30° or jib down angle is less than 15°, the control system will automatically cut off the boom/jib from further lowering. Meanwhile, the display and the buzzer will give alarms. At this moment, boom/jib luffing winch won't be able to lower. This protection is automatically controlled by Load Moment Limiter.

### Back-stop Device

- The boom and the superlift mast are respectively equipped with a pair of back-stop cylinders. The high pressure of the cylinder shall be overcome when the boom tilts backwards, and high pressure oil will be supplemented automatically when the boom swings forwards to increase the tension and prevent the boom vibration and shaking back.
- The jib rear mast is equipped with a pair of back-stop cylinders, while the jib front mast is equipped with a pair of pneumatic cylinders to prevent the mast from the backward inclination and tension of the jib luffing wire rope.

### Brake of Hoisting Mechanism

- All hoisting brakes are spring loaded normally closed disc brakes, which are featured with large braking force, maintenance-free, safe and reliable use, and long service life.

### CCTV Monitoring System

- It can be used to monitor the winding conditions of wire ropes of each hoisting mechanism, the conditions of superlift weight, and conditions around the equipment.

### Fault Auto-Diagnosis System

- Faults can be conveniently eliminated based on the fault code.

### Black Box

- It is able to record the operation data and machine movement, and analyze the remaining running conditions and service life of machine based on the actual performance.

### Pharos

- It is mounted on the top of the boom/jib and alerts in air during night.

### Anemometer

- It is mounted on the top of the boom/jib to monitor the wind speed in real time and display relative data on the monitor.

## Safety Devices



### Electronic Level Indicator

- It displays the tilting angle of the crane on the monitor in real time and protects the safe operation of the crane.

### Lightning Protection Device

- It includes the lightning protection device and the surge protection device, which can effectively protect the electric system elements and workers from lightning.

### Hook Latch

- The lifting hook is installed with a baffle plate to prevent wire rope from falling off.

### Swing and Traveling Alarm

- During swing and traveling, the alarm horn will be blown per certain frequency to alert the personnel around the crane. The horn can be shut off through the display.

### Seat interlock

- The operation will be locked by pulling up the function locking lever on the right side of the seat inside the driver's cab or when the operator left the seat, after which no operating handles will be working so that improper operation caused by the body collision when getting on and off the crane can be avoided.

### Regulation of Engine Power Ultimate Load and Stalling Protection

- The controller can monitor the engine power so as to prevent stalling.

### Engine Status Monitoring

- It can show the engine coolant temperature, fuel volume, total working hours, engine oil pressure, engine speed, battery and voltage.

### Remote Monitoring System

- It monitors and analyzes the operation data so as to realize remote diagnosis of faults and timely solution.

### Emergent Stop

- In a sudden loss of control, press the emergent stop, and brakes will be applied on all actions such as hoisting, luffing, swing and traveling and engine stop.



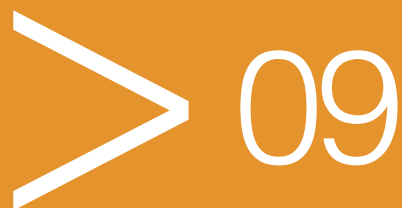


**SCC4000A-2**  
**SANY CRAWLER CRANE**  
**400 TONS LIFTING CAPACITY**

QUALITY CHANGES THE WORLD

## Technical Parameters

- Page 10 Major Performance & Specifications
- Page 11 Outline Dimension
- Page 13 Transport Dimensions
- Page 20 Transport Plan
- Page 21 Transport Details
- page 21 Self-Assembly Plan

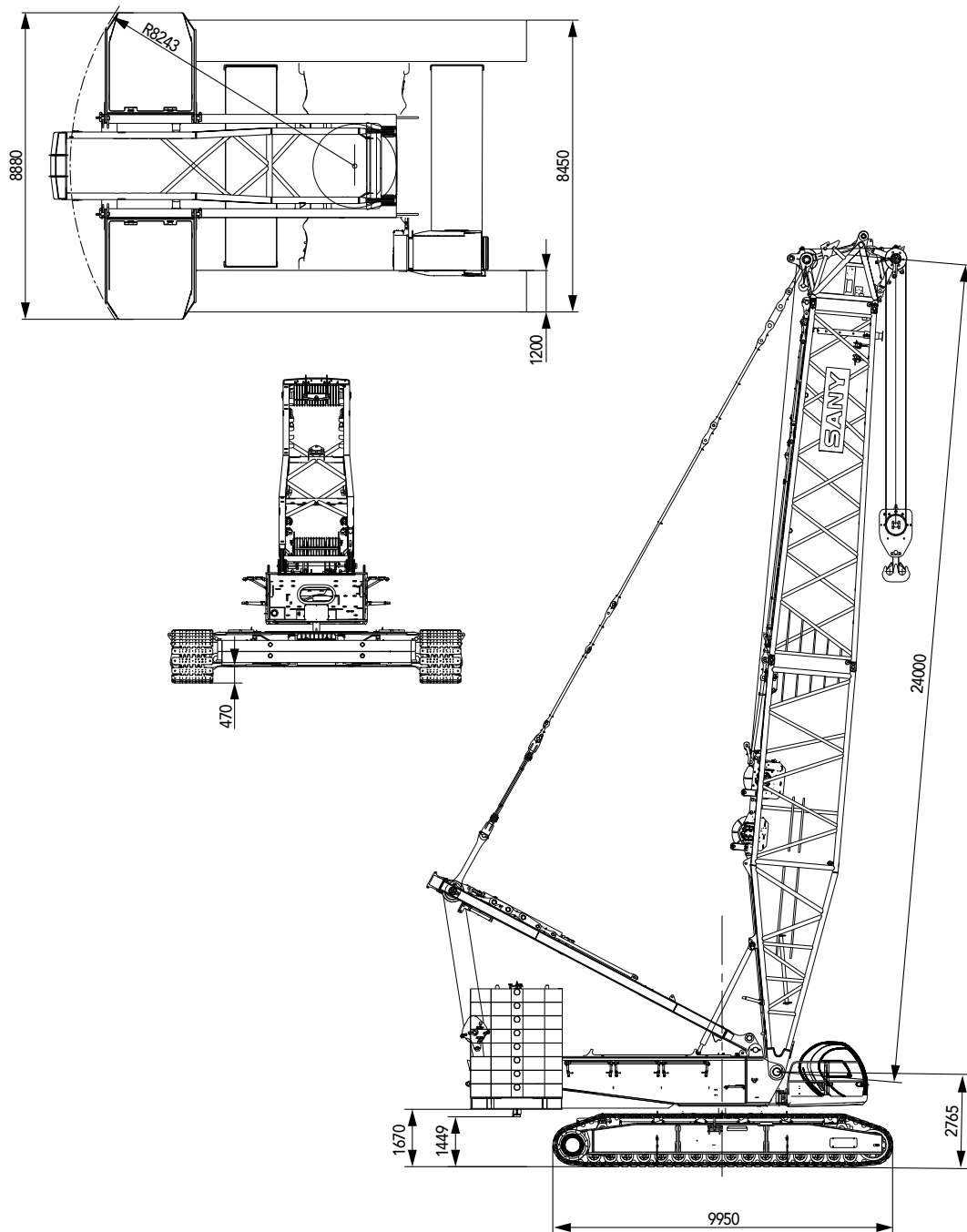


## Major Performance & Specifications

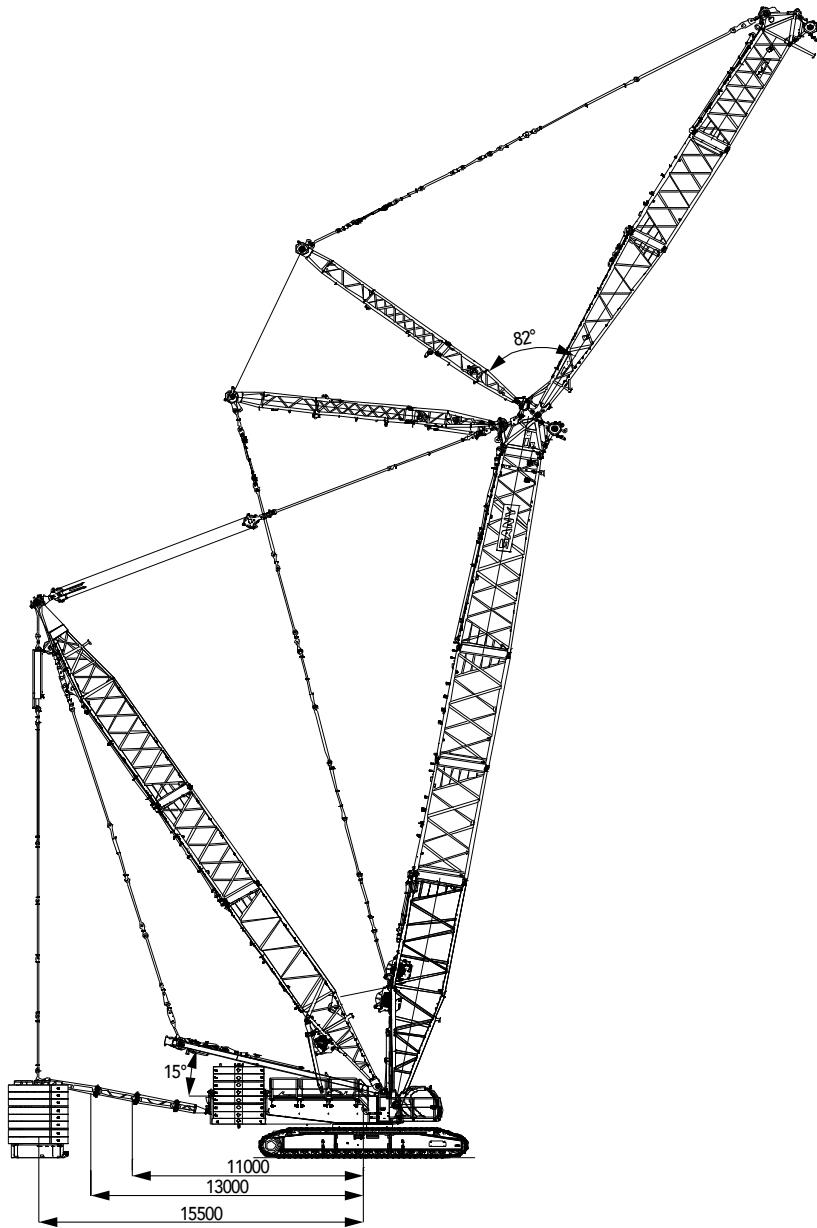
Major Performance & Specifications of SCC4000A-2		
Performance Indicators	Unit	Parameter
Max. rated lifting capacity	t	400
Max. rated lifting moment	t·m	2400
Max. rated lifting moment (with superlift)	t·m	5280
Boom length (H)	m	24~84
Boom length (HDB with superlift)	m	36~84
Length of mixed boom (HJ)	m	48~102
Length of mixed boom (HJDB with superlift)	m	72~126
Length of luffing jib (LJ)	m	24~72
Length of luffing jib (LJDB with superlift)	m	24~84
Combination of longest boom+jib (LJDB Configuration)	m	84+84
Heavy boom for wind energy	m	9
Boom + Fixed jib (FJH)	m	24+9
Boom + Fixed jib (HJFJ)	m	96+9
Angle of boom hoisting	°	30~85
Angle of jib luffing	°	15~75
Max. speed of single rope of the main load hoist	m/min	0~140
Max. speed of single rope of the aux. load hoist	m/min	0~140
Max. speed of single rope of the boom hoisting	m/min	(0~65) ×2
Max. speed of single rope of the jib luffing	m/min	0~100
Max. speed of single rope of the superlift luffing	m/min	0~100
Slewing speed (no load)	r/min	0~1.5
Travel speed	km/h	0~1(high)/0~0.4(low)
Gradeability (with base boom, driver's cab backwards)	%	15
Rated output power of the engine	kW/r/min	298/1800
Average ground pressure of the track (base boom, 150t main body weight, 40t carbody weight, and 400t hook)	MPa	0.167
Max. unit transportation dimensions (L × W × H)	mm	12000×3000×3250
Max. unit transportation weight	t	44.9

Unit: mm

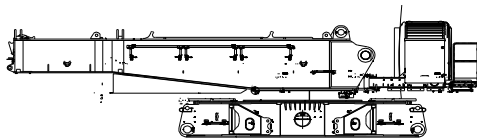
### Outline Dimension



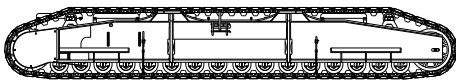
### Outline Dimension



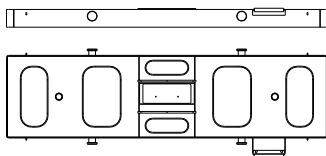
## Transport Dimensions



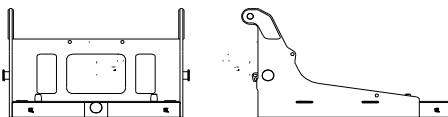
Basic machine		×1
Length(L)		12.00m
Width(W)		3.00m
Height(H)		3.25m
Weight		45.0t



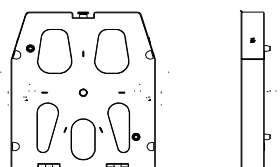
Crawler		×2
Length (L)		9.95m
Width (W)		1.70m
Height (H)		1.55m
Weight		27.0t



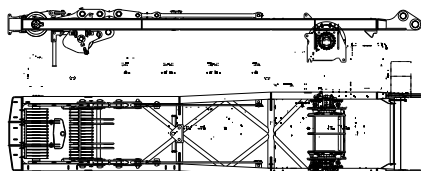
Carbody counterweight		×4
Length(L)		5.80m
Width(W)		1.72m
Height(H)		0.33m
Weight		10.0t



Rear counterweight tray		×2
Length(L)		3.20m
Width(W)		2.83m
Height(H)		1.80m
Weight		15.0t

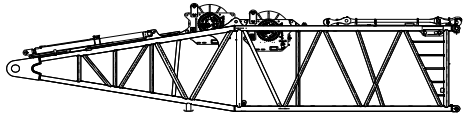


10t counterweight		×36
Length(L)		2.85m
Width(W)		2.40m
Height(H)		0.49m
Weight		10.0t



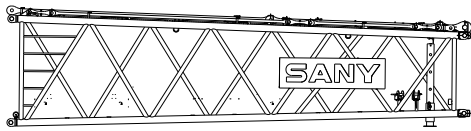
Boom luffing mast		×1
Length(L)		10.91m
Width(W)		2.19m
Height(H)		1.38m
Weight		11.0t

## Transport Dimensions



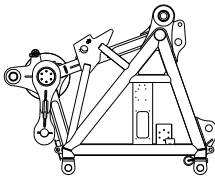
### Boom base ×1

Length(L)	12.33m
Width(W)	3.00m
Height(H)	3.20m
Weight	19.4t



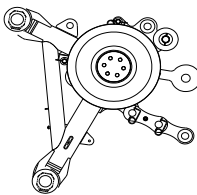
### Boom tapered insert ×1

Length(L)	10.68m
Width(W)	2.96m
Height(H)	2.79m
Weight	4.8t



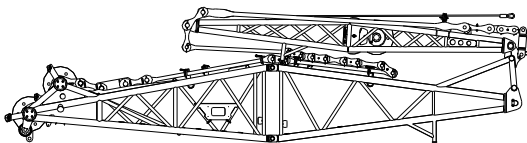
### Boom tip ×1

Length(L)	2.34m
Width(W)	2.59m
Height(H)	2.60m
Weight	3.4t



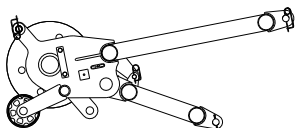
### Pulley block ×2

Length(L)	1.07m
Width(W)	2.96m
Height(H)	2.79m
Weight	0.85t



### Basic fixed jib ×1

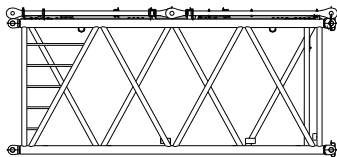
Length (L)	10.06m
Width (W)	2.50m
Height (H)	2.46m
Weight	5.1t



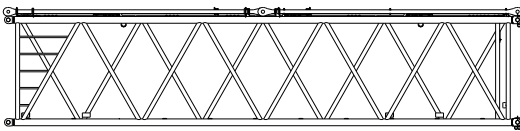
### Extension boom ×1

Length(L)	2.22m
Width(W)	1.00m
Height(H)	1.43m
Weight	0.36t

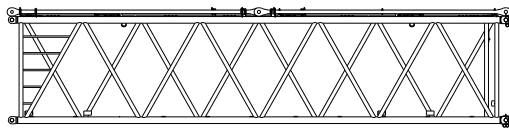
## Transport Dimensions



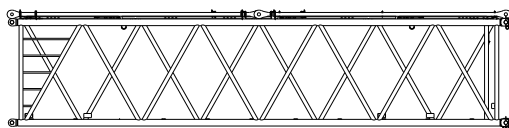
6m boom insert	×2
Length(L)	6.24m
Width(W)	2.96m
Height(H)	2.78m
Weight	2.7t



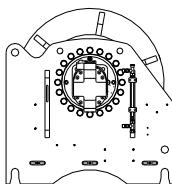
12m boom insert A	×1
Length(L)	12.24m
Width(W)	2.96m
Height(H)	2.78m
Weight	4.8t



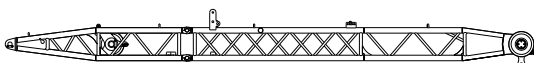
12m boom insert B	×2
Length(L)	12.24m
Width(W)	2.96m
Height(H)	2.78m
Weight	4.4t



12m boom insert C	×1
Length(L)	12.24m
Width(W)	2.96m
Height(H)	2.78m
Weight	3.9t

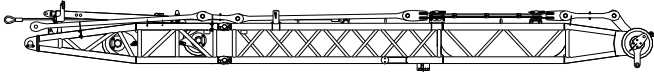


Jib luffing winch	×1
Length(L)	1.75m
Width(W)	1.20m
Height(H)	1.20m
Weight	4.0t



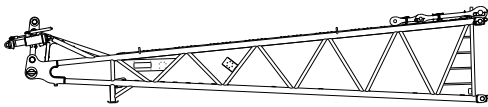
Front mast of luffing jib	×1
Length (L)	13.44m
Width (W)	2.18m
Height (H)	1.48m
Weight	3.4t

## Transport Dimensions



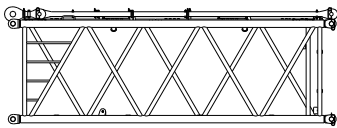
### Rear mast of luffing jib ×34

Length(L)	12.94m
Width(W)	2.94m
Height(H)	1.29m
Weight	5.1t



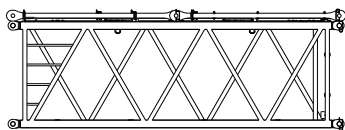
### Luffing jib base ×1

Length(L)	11.9m
Width(W)	2.56m
Height(H)	2.17m
Weight	3.9t



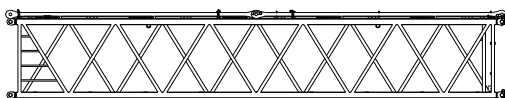
### 6m luffing jib insert I ×1

Length(L)	6.18m
Width(W)	2.56m
Height(H)	2.17m
Weight	1.9t



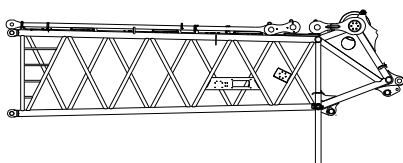
### 6m luffing jib insert II ×2

Length (L)	6.18m
Width (W)	2.56m
Height (H)	2.17m
Weight	1.8t



### 12m luffing jib insert ×4

Length(L)	12.18m
Width(W)	2.56m
Height(H)	2.17m
Weight	3.2t

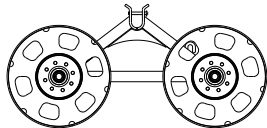


### Luffing jib top ×1

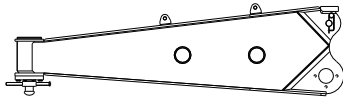
Length(L)	8.16m
Width(W)	2.54m
Height(H)	2.40m
Weight	3.9t



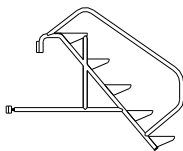
## Transport Dimensions



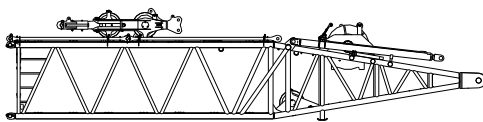
Trolley	×1
Length(L)	3.00m
Width(W)	2.05m
Height(H)	1.65m
Weight	1.1t



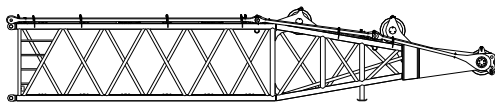
Side outrigger assembly	×2
Length(L)	3.33m
Width(W)	0.79m
Height(H)	0.90m
Weight	1.1t



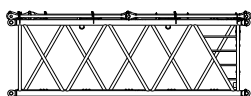
Ladder	×2
Length(L)	1.25m
Width(W)	0.56m
Height(H)	1.22m
Weight	0.05t



Superlift mast base	×1
Length(L)	12.28m
Width(W)	3.00m
Height(H)	2.86m
Weight	14.7t

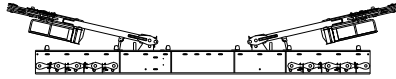


Superlift mast top	×1
Length(L)	12.42m
Width(W)	2.90m
Height(H)	2.40m
Weight	8.56t



Superlift mast insert	×1
Length(L)	6.18m
Width(W)	2.56m
Height(H)	2.17m
Weight	2.85t

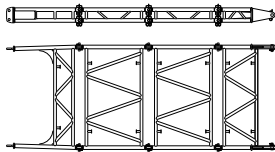
## Transport Dimensions



### Superlift counterweight tray

×1

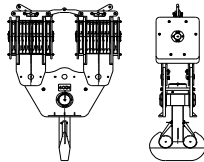
Length(L)	9.95m
Width(W)	2.70m
Height(H)	2.20m
Weight	29.0t



### Superlift counterweight stabilization brace

×1

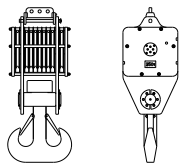
Length(L)	8.30m
Width(W)	2.80m
Height(H)	0.45m
Weight	1.92t



### 400t hook ( dual-pulley)

×1

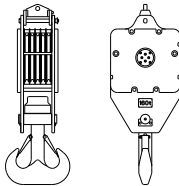
Length(L)	1.02m
Width(W)	2.69m
Height(H)	4.07m
Weight	10.9t



### 260t hook

×1

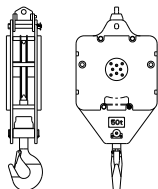
Length(L)	1.02m
Width(W)	1.13m
Height(H)	2.93m
Weight	5.2t



### 160t hook

×1

Length(L)	0.61m
Width(W)	1.02m
Height(H)	2.65m
Weight	3.0t

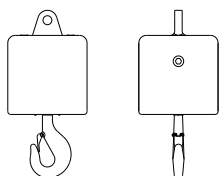


### 50t hook

×1

Length(L)	0.45m
Width(W)	1.07m
Height(H)	2.3m
Weight	1.7t

## Transport Dimensions



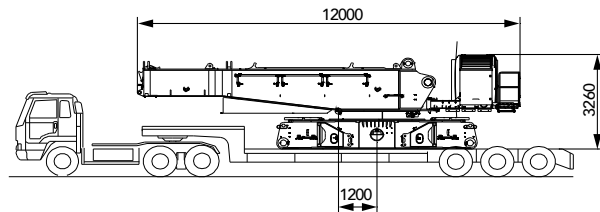
16t hook	×1
Length(L)	0.53m
Width(W)	0.53m
Height(H)	1.10m
Weight	0.9t

**Note:**

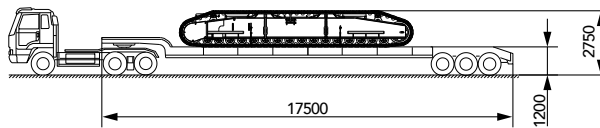
1. The transport dimensions of each part in the table are schematic, not proportional to the real parts. The dimensions are designed value without package considered.
2. Weight is designed value that the actual manufactured part may deviate a little.
3. The dimensions and weight of each part may change due to product upgrading. The final values are subject to the new product.

## Transport Plan

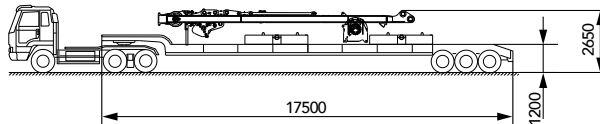
Transport weight	▪ 45t
Part	▪ Basic machine
Truckload	▪ 1



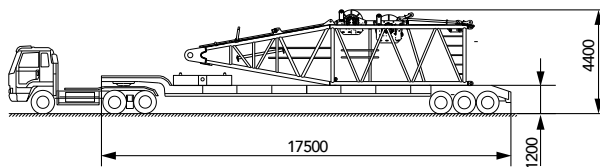
Transport weight	▪ 27.5t
Part	▪ Crawler
Truckload	▪ 2



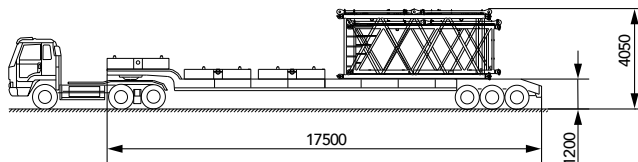
Transport weight	▪ 31t
Part	▪ Boom luffing mast ▪ 10t rear counterweight *2
Truckload	▪ 1



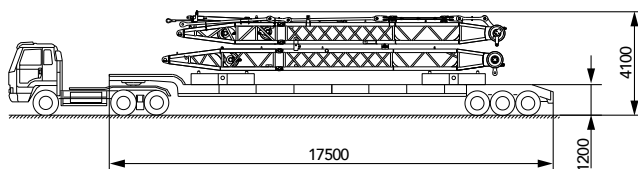
Transport weight	▪ 29.4t
Part	▪ Boom base ▪ 10t counterweight *1
Truckload	▪ 1



Transport weight	▪ 30.2t
Part	▪ 6m boom insert ▪ 6m luffing jib II ▪ 10t counterweight *1 ▪ 8t counterweight *2
Truckload	▪ 1



Transport weight	▪ 28.5t
Part	▪ Front mast of luffing jib ▪ Rear mast of luffing jib ▪ 10t counterweight *2
Truckload	▪ 1

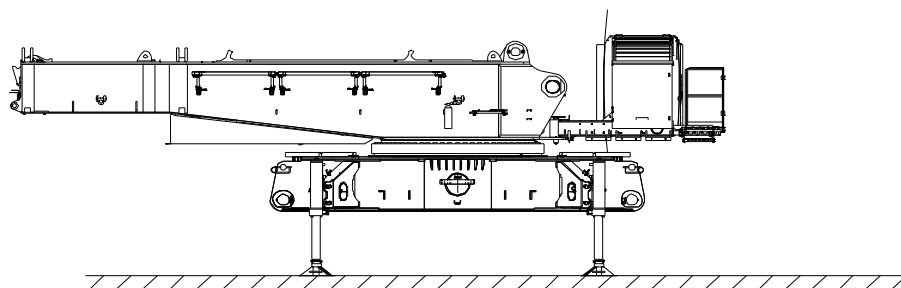
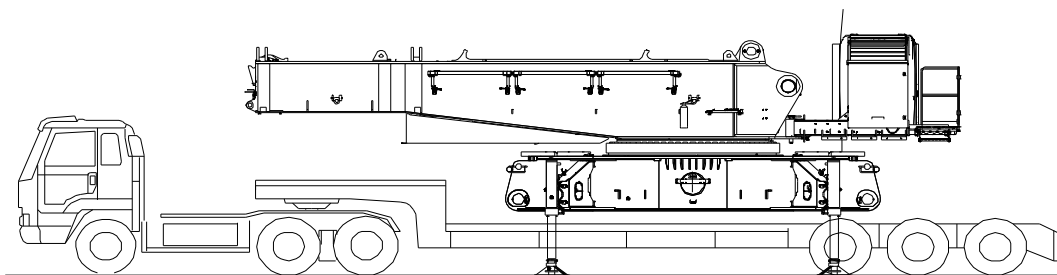
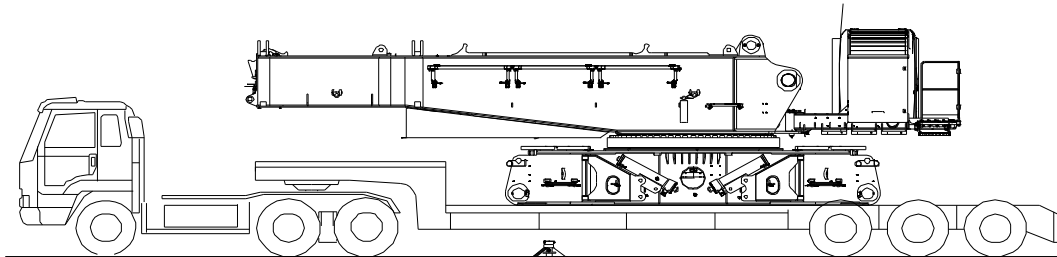


**Note:**

the transport combinations listed above is just some of the transport plans, for reference only;  
Actual transport plan shall be determined by parts of Configurations as below, trailer, and transport regulation.

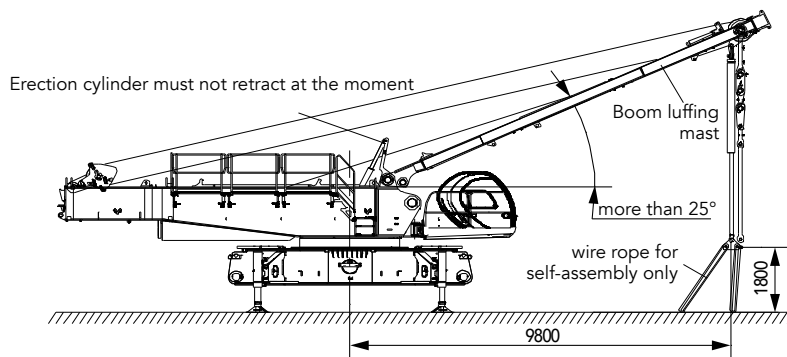
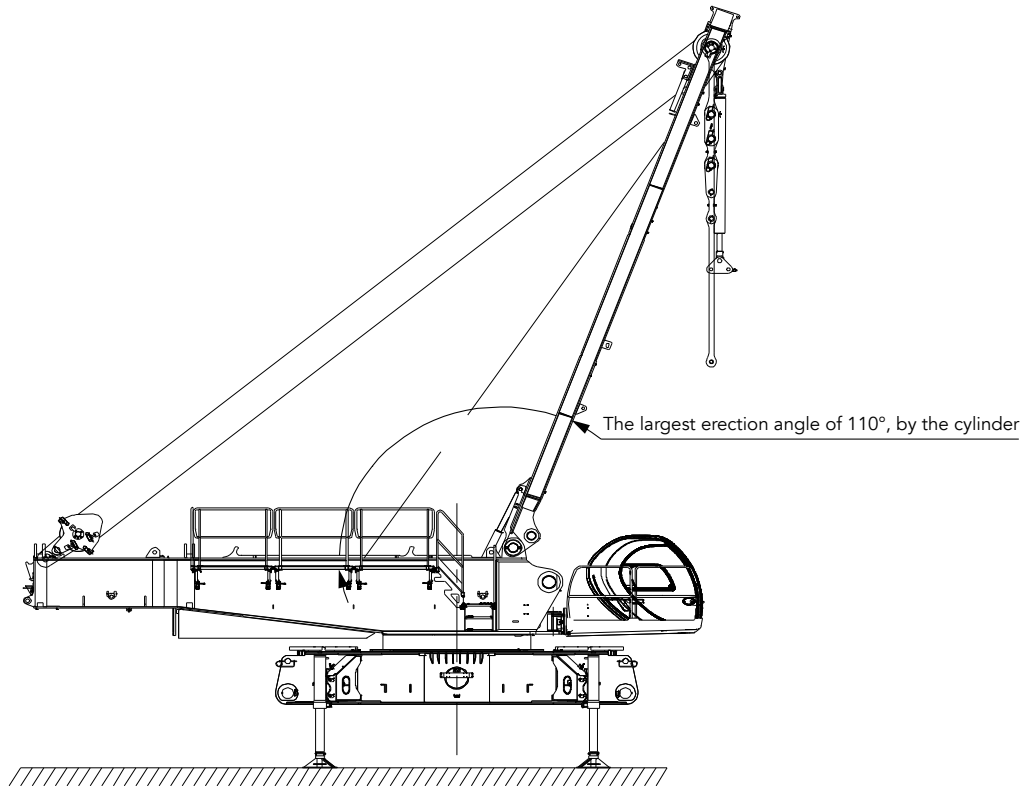
## Self-Assembly Plan

### Basic machine self-assembly



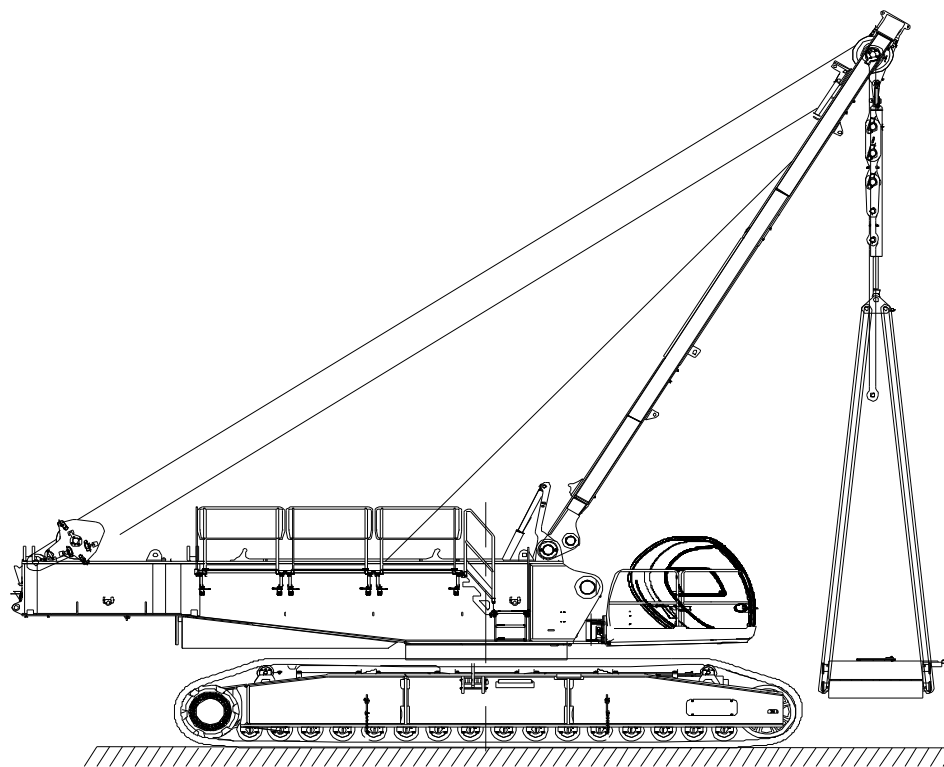
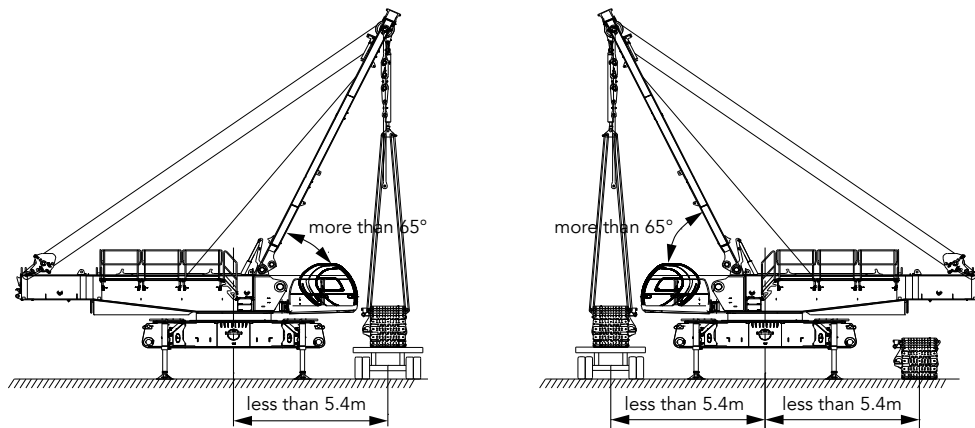
## Self-Assembly Plan

### Crawler frame self-assembly



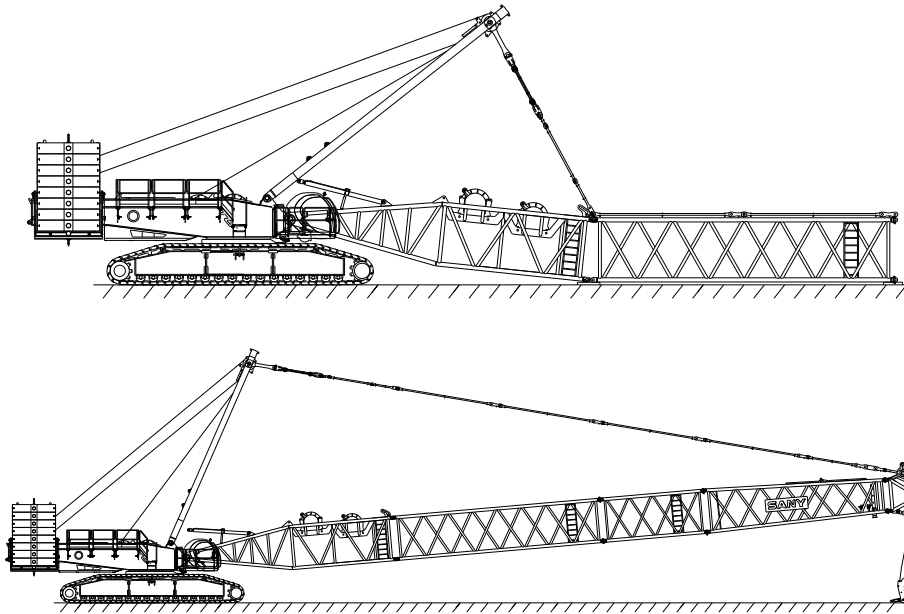
## Self-Assembly Plan

### Crawler frame self-assembly

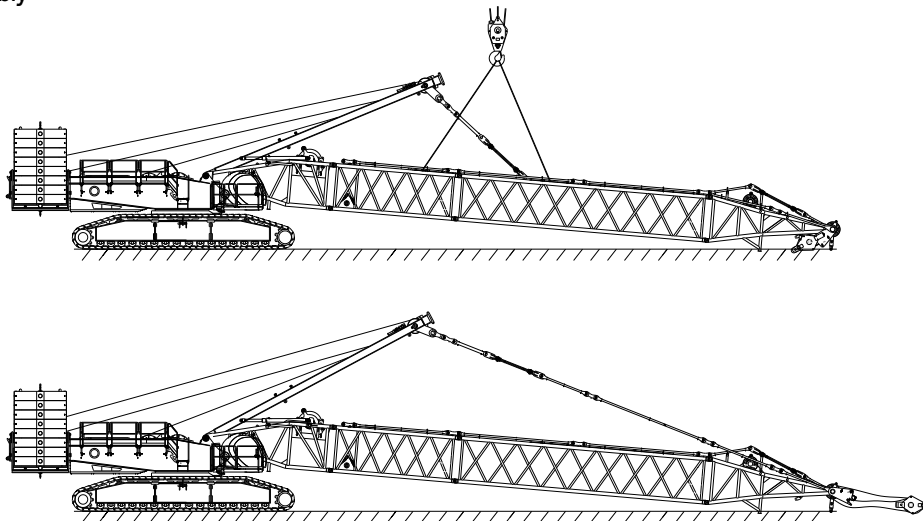


## Self-Assembly Plan

### Boom assembly



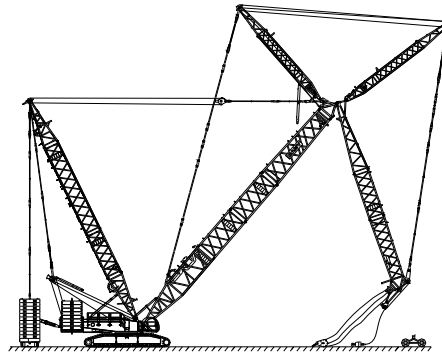
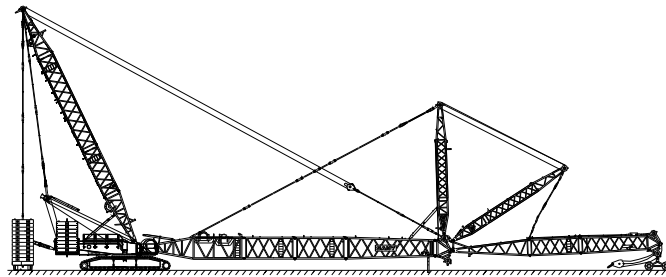
### Superlift mast assembly



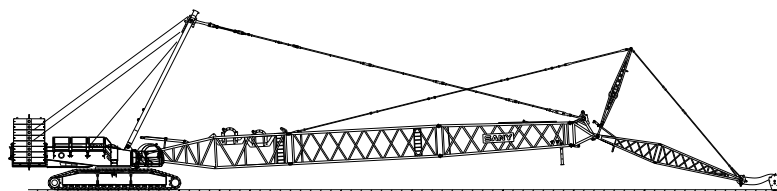
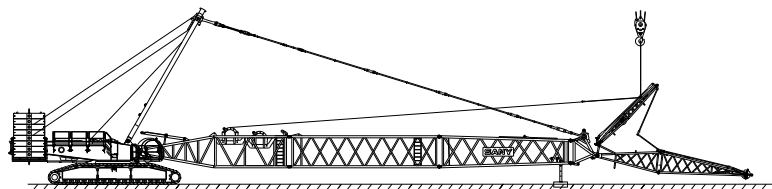
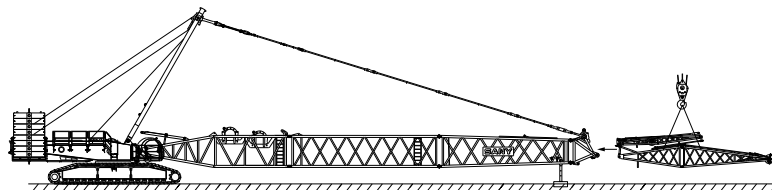


## Self-Assembly Plan

### Luffing jib assembly



### Fixed jib assembly



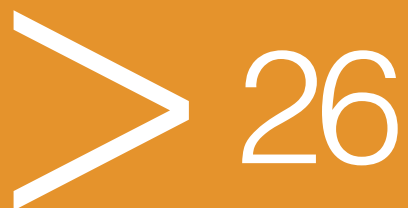


# **SCC4000A-2 SANY CRAWLER CRANE 400 TONS LIFTING CAPACITY**

QUALITY CHANGES THE WORLD

## Cofigurations

- Page 27 Configurations
- Page 29 H Configuration
- Page 32 HDB Configuration
- Page 35 HJ Configuration
- Page 38 HJDB Configuration
- Page 41 HJFJ Configuration
- Page 45 FJh Configuration
- Page 48 LJ Configuration
- Page 53 LJDB Configuration



## Boom combination

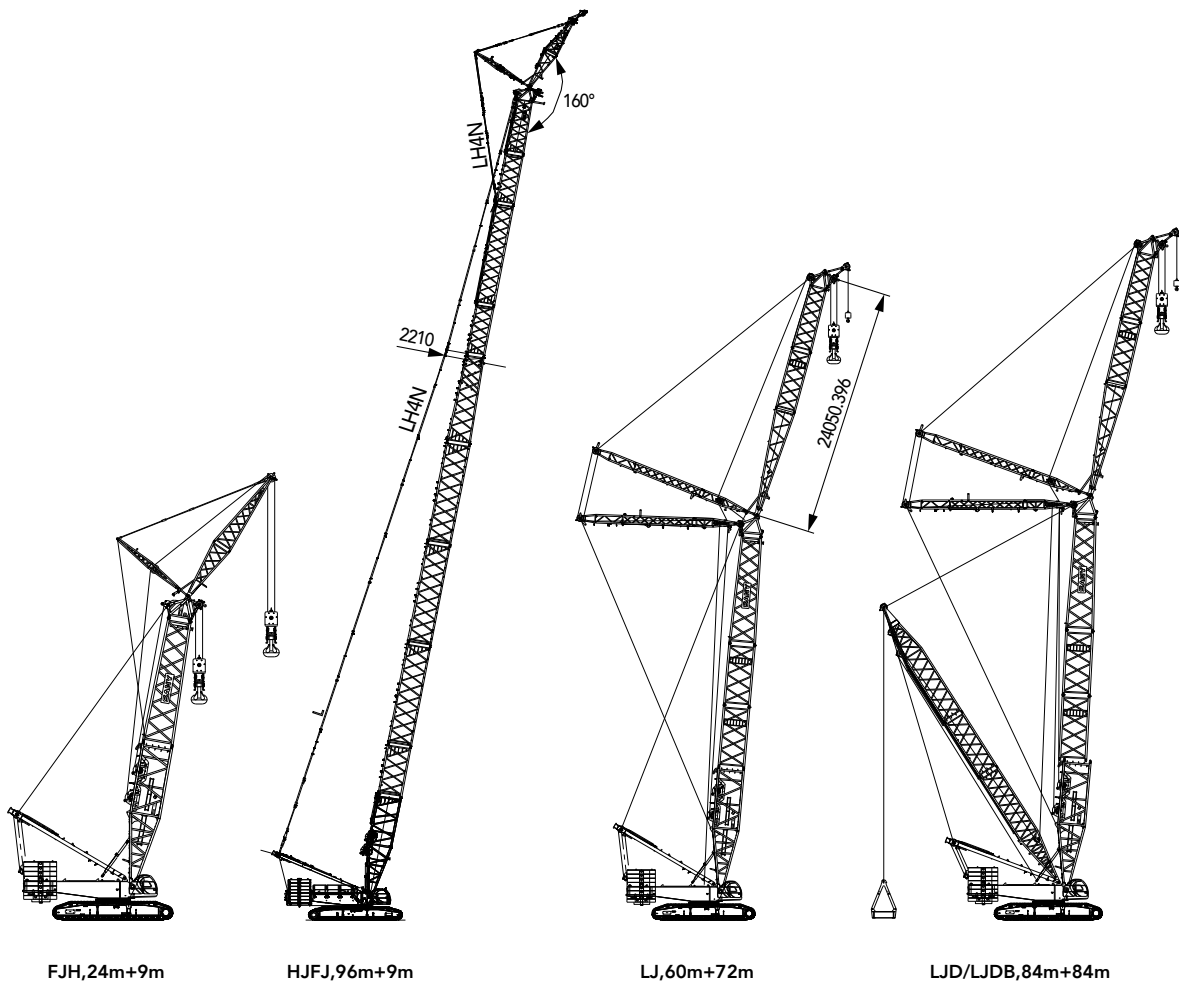


H,24m~84m

HD/HDB,36m~84m

HJ,48m~102m

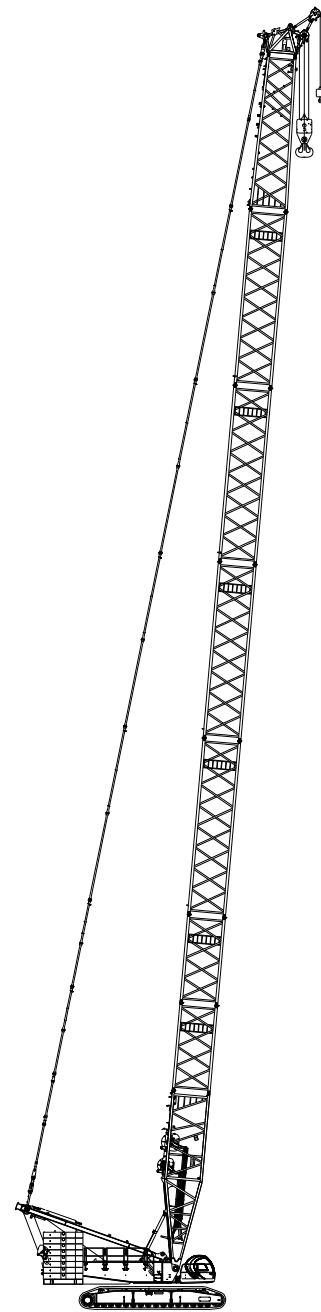
HJD/HJDB,72m~126m

**Boom combination**

## Boom Combination o in H

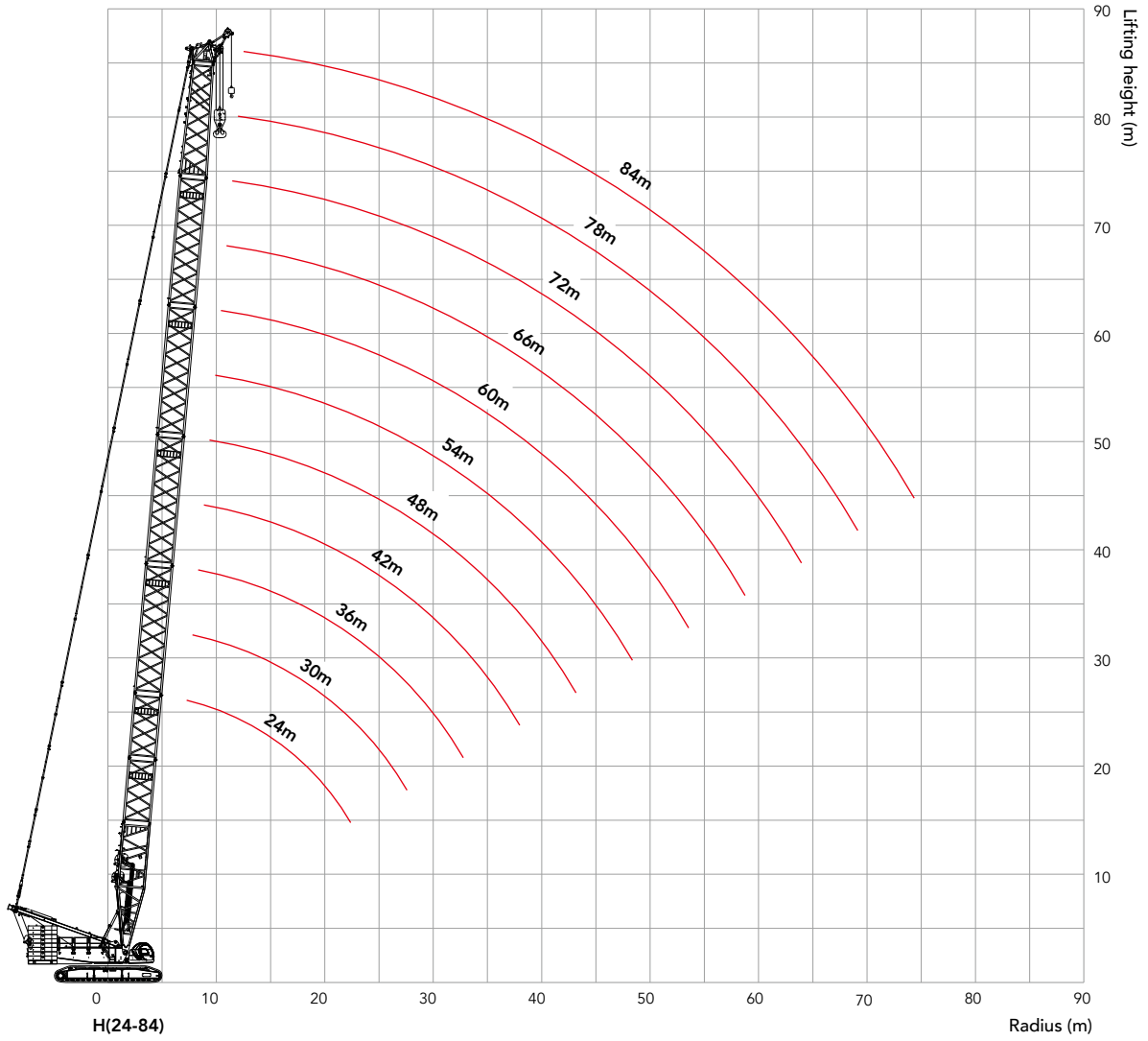
Boom Combination o in H				
Boom length(m)	Insert			
	6m	12mA	12mB	12mC
24	-	-	-	-
30	1	-	-	-
36	2	-	-	-
42	1	1	-	-
48	2	1	-	-
54	1	1	1	-
60	2	1	1	-
66	1	1	2	-
72	2	1	2	-
78	1	1	2	1
84	2	1	2	1

Note: 24m basic boom consists of 12m boom insert, 10.5m transition insert, and 1.5m pulley at boom tip.



H (84m)

# Working Radius in H



Unit: t

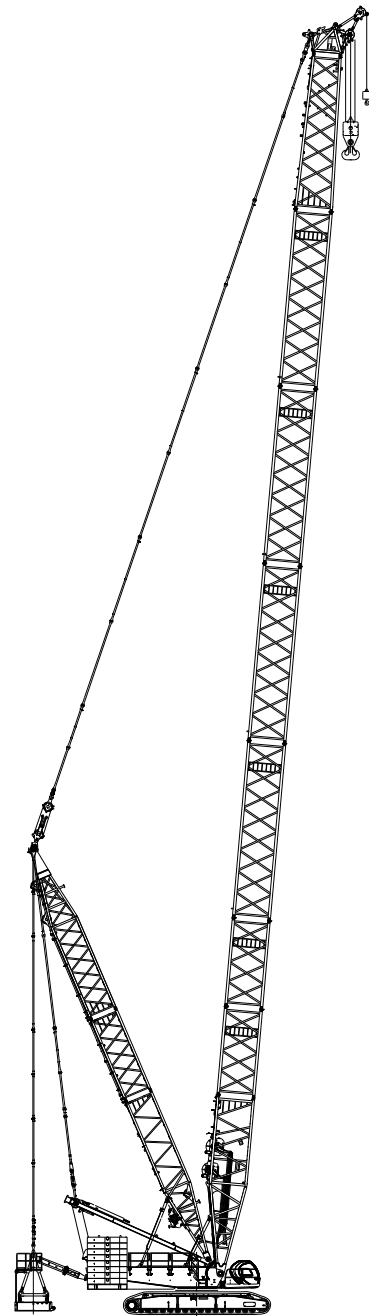
## Load Chart of H

SCC4000A-2 Crawler Crane-H Configuration												
Boom length 24m~84m, Rear counterweight 150t, Carbody counterweight 40t												
Radius (m)	24	30	36	42	48	54	60	66	72	78	84	Radius (m)
6	400	400										6
7	339.2	338.6	337.9									7
8	300	297.8	297.1	284.5	269.3							8
9	264.6	264.3	259.9	247.1	235.1	224.2	214.2					9
10	234.8	234.6	228.2	218	208.3	199.4	191.2	183.5	176			10
11	210.8	210.6	203	194.7	186.7	179.2	172.3	165.8	159.4	153.9		11
12	191	190.1	182.6	175.6	168.8	162.5	156.6	151	145.5	140.7	135.6	12
14	153.5	153.9	151.4	146.2	141.1	136.3	131.8	127.6	123.1	119.5	115.4	14
16	126.2	126.6	126.6	124.7	120.7	116.8	113.2	109.8	106.2	103.2	99.8	16
18	106.5	106.9	106.8	106.7	104.9	101.7	98.7	95.9	92.8	90.3	87.4	18
20	91.6	92	91.9	91.8	91.3	89.6	87.1	84.7	81.9	79.9	77.3	20
22	79.9	80.4	80.3	80.1	79.6	79.2	77.6	75.4	73	71.2	68.9	22
24		71	70.9	70.7	70.2	69.8	69.4	67.7	65.5	63.9	61.8	24
26		63.3	63.2	63	62.5	62	61.6	61.2	59.2	57.7	55.7	26
28		56.8	56.8	56.6	56.1	55.6	55.2	54.8	53.7	52.4	50.5	28
30			51.3	51.1	50.6	50.1	49.7	49.3	48.5	47.7	45.9	30
32			46.6	46.4	45.9	45.4	45	44.5	43.8	43.6	41.9	32
34				42.3	41.8	41.3	40.9	40.4	39.7	39.4	38.3	34
36				38.7	38.2	37.7	37.3	36.8	36.1	35.8	35.1	36
38				35.5	35.1	34.6	34.1	33.7	32.9	32.7	31.9	38
40					32.2	31.7	31.3	30.8	30.1	29.8	29	40
44						26.9	26.5	26	25.2	25	24.2	44
48						22.9	22.5	22.1	21.3	21	20.2	48
52							19.2	18.7	18	17.7	16.9	52
56								15.9	15.1	14.9	14.1	56
60									12.7	12.5	11.6	60
64									10.6	10.3	9.5	64
68										8.5	7.7	68
72											6	72

## Boom Combination in HDB

### Boom Combination in HDB

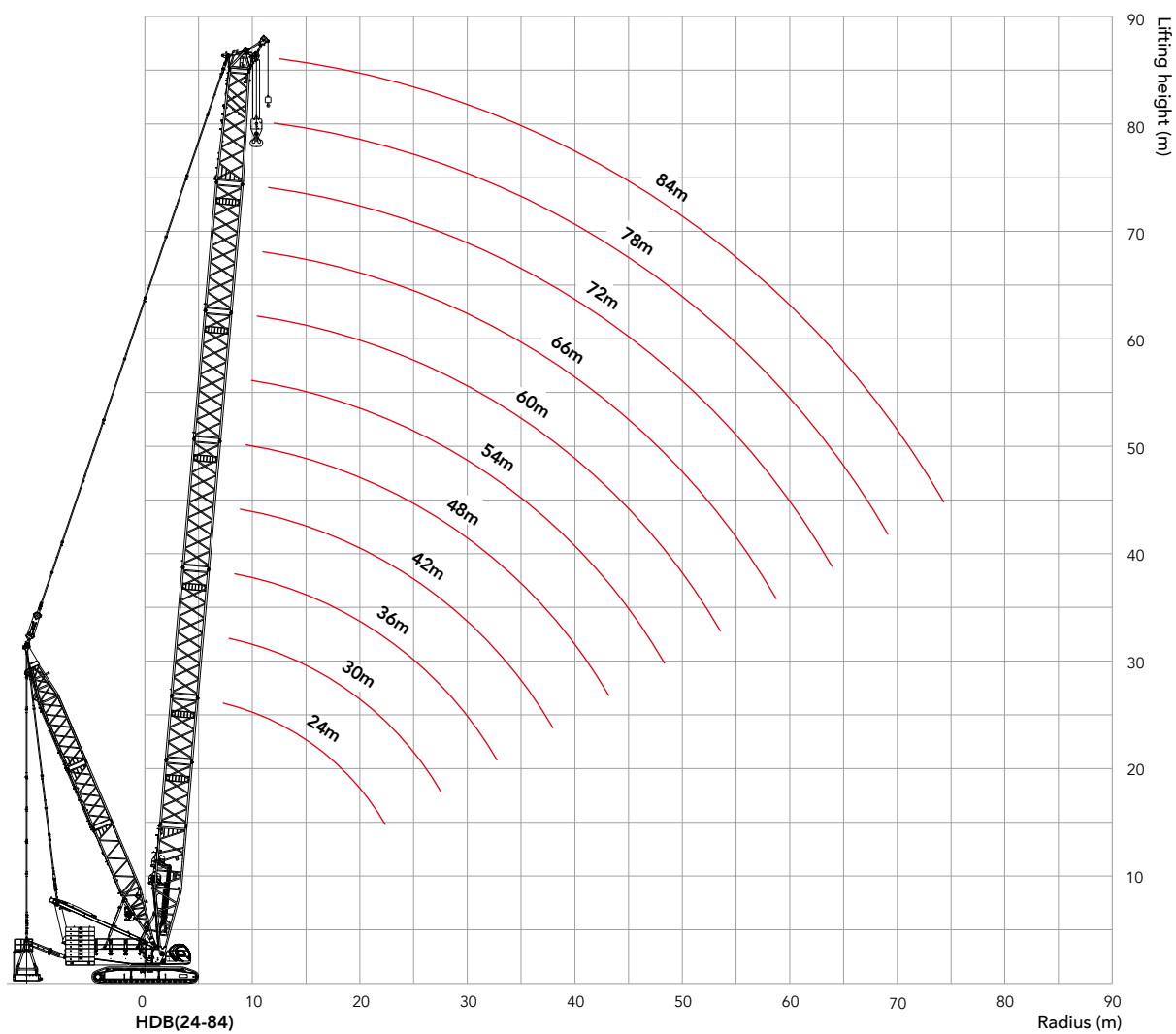
Boom length(m)	Insert			
	6m	12mA	12mB	12mC
36	2	-	-	-
42	1	1	-	-
48	2	1	-	-
54	1	1	1	-
60	2	1	1	-
66	1	1	2	-
72	2	1	2	-
78	1	1	2	1
84	2	1	2	1



HDB(84m)



## Working Radius in HDB



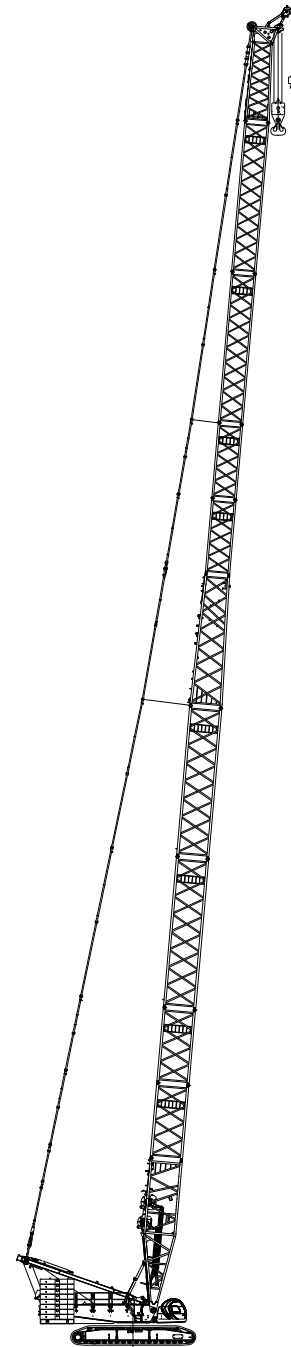
## Load Chart of HDB

SCC4000A-2 Crawler Crane-HDB Configuration										
Boom length 36m~84m, Superlift radius 15.5m, Superlift counterweight 250t, Rear counterweight 150t, Carbody counterweight 40t										
Radius (m)	36	42	48	54	60	66	72	78	84	Radius (m)
7	400*									7
8	400*	400*	400*							8
9	400*	400*	400*	368*						9
10	400*	400*	400*	369*	348*	292*				10
11	400	400*	400*	369*	348*	292*	248*			11
12	400	400	400	370*	349*	294*	249*	206*	179*	12
14	381	381	381	372	348	294*	250*	206*	179*	14
16	333	333	333	332	332	295	250*	207*	180*	16
18	296	296	295	295	294	294	251	206*	180*	18
20	265	265	265	265	264	264	251	206	180*	20
22	240	240	240	240	239	239	238	207	179*	22
24	220	219	219	219	218	218	217	206	179	24
26	202	202	201	201	201	200	199	199	179	26
28	182	186	186	186	185	185	184	184	179	28
30	169	172	173	172	172	172	171	171	170	30
32	152	159	161	161	160	160	159	159	158	32
34		147	149	150	150	150	149	149	148	34
36		137	139	140	141	140	140	139	139	36
38		127	129	131	131	132	131	131	130	38
40			121	122	123	124	124	124	123	40
44				108	109	109	109	110	110	44
48				96.4	97.4	98.0	98.0	98.4	98.1	48
52					87.3	88.0	88.0	88.4	88.0	52
56						79.3	79.4	79.8	79.5	56
60							71.9	72.4	72.1	60
64							65.3	65.9	65.6	64
68								60.1	59.8	68
72									54.7	72

## Boom Combination of HJ

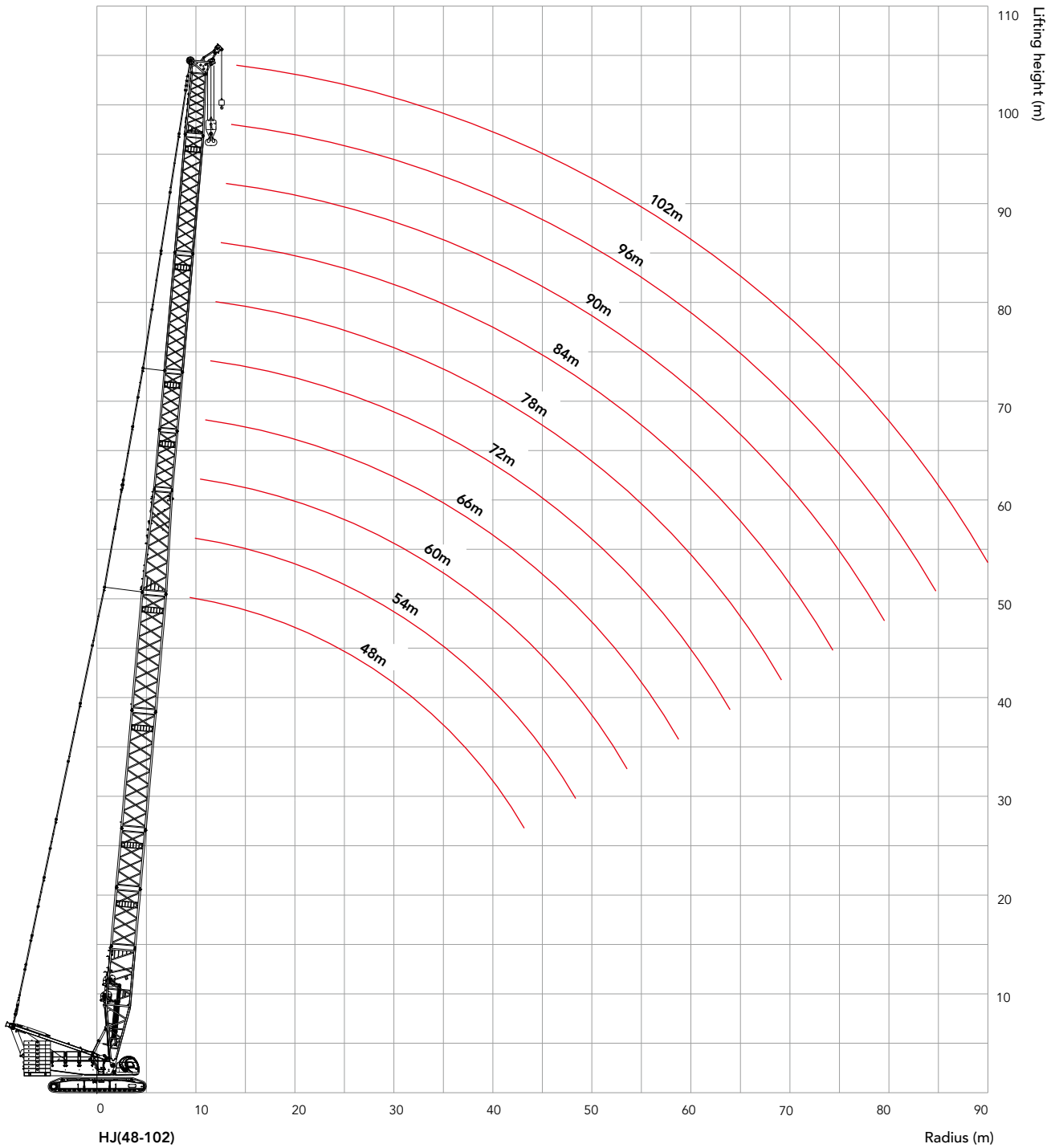
Boom Combination of HJ						
Boom length (m)	Boom Insert				Jib Insert	
	6m	12mA	12mB	12mC	6m	12m
48	2	-	-	-	-	-
54	1	1	-	-	-	-
60	1	1	-	-	1	-
66	2	1	-	-	1	-
72	1	1	1	-	1	-
78★	1	1	1	-	2	-
84★	2	1	1	-	2	-
90★	2	1	1	-	1	1
96★	1	1	2	-	1	1
102★	1	1	2	-	2	1

Note: 12m boom base, 12m transition insert, 6m tapered luffing jib insert and 7.5m jib top are must; For combinations with " ★ ", the mid-point suspension cable must be used, otherwise, the boom may break.



HJ(102m)

# Working Radius in HJ



Unit: t

## Load Chart of HJ

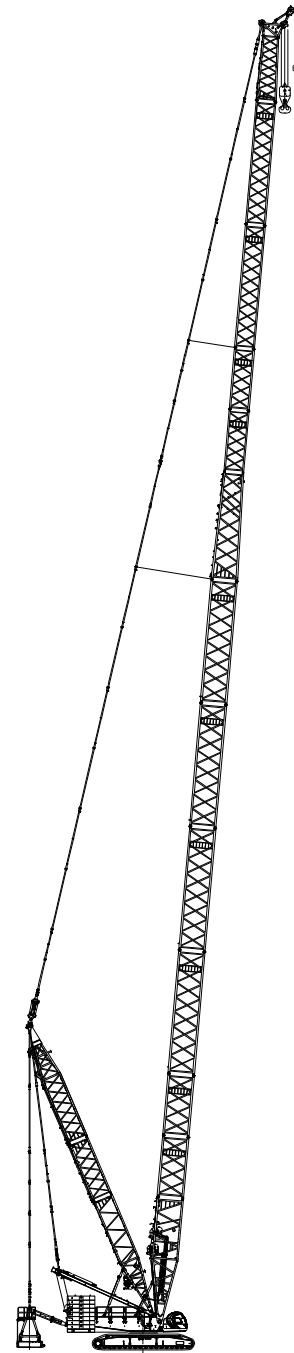
SCC4000A-2 Crawler Crane-HJ Configuration											
Boom length 48m~102m, Rear counterweight 150t, Carbody counterweight 40t											
Radius(m)	48	54	60	66	72	78	84	90	96	102	Radius(m)
8	220										8
9	220	220	193.2								9
10	210.5	201.5	193.6	185.7	178.9						10
11	188.9	181.5	174.9	168.1	162.4	138.5	141.2				11
12	171.1	164.8	159.2	153.4	148.5	136.2	138.8	114.8	115.6		12
14	143.6	138.7	134.6	130	126.3	122.6	118.7	111.2	111.5	94.3	14
16	123.2	119.3	116.1	112.3	109.4	106.4	103.2	100.5	97.2	91.4	16
18	107.5	104.3	101.6	98.4	96.1	93.6	90.8	88.6	85.8	83.5	18
20	93.6	92.3	90.1	87.3	85.3	83.2	80.8	78.9	76.4	74.4	20
22	81.9	81.5	80.6	78.1	76.4	74.6	72.4	70.8	68.5	66.7	22
24	72.6	72.1	72	70.4	69	67.3	65.4	63.9	61.9	60.2	24
26	64.9	64.4	64.3	63.6	62.7	61.2	59.4	58.1	56.1	54.6	26
28	58.5	58	57.9	57.1	57.1	55.8	54.2	53	51.2	49.8	28
30	53.1	52.5	52.4	51.7	51.6	51.2	49.6	48.5	46.8	45.5	30
32	48.4	47.9	47.7	47	46.9	46.6	45.6	44.6	43	41.8	32
34	44.3	43.8	43.7	42.9	42.8	42.5	41.9	41.1	39.5	38.4	34
36	40.8	40.2	40.1	39.3	39.2	38.9	38.3	38	36.5	35.4	36
38	37.6	37.1	36.9	36.2	36.1	35.8	35.2	34.9	33.7	32.7	38
40	34.8	34.3	34.1	33.3	33.3	32.9	32.3	32.1	31.2	30.2	40
44		29.5	29.3	28.6	28.5	28.1	27.5	27.3	26.4	25.9	44
48		25.5	25.4	24.6	24.5	24.2	23.6	23.3	22.5	22	48
52			22.1	21.3	21.2	20.9	20.3	20	19.2	18.7	52
56				18.5	18.1	18.1	17.5	17.2	16.4	15.9	56
60					14.9	15.7	15.1	14.8	14	13.5	60
64					11.8	13.6	13	12.7	11.9	11.4	64
68						11.7	11.1	10.9	10	9.6	68
72							9.5	9.3	8.4	7.9	72
76								7.8	6.9	6.5	76
80								6.5	5.1	5.2	80

## Boom Combination in HJDB

### Boom Combination in HJDB

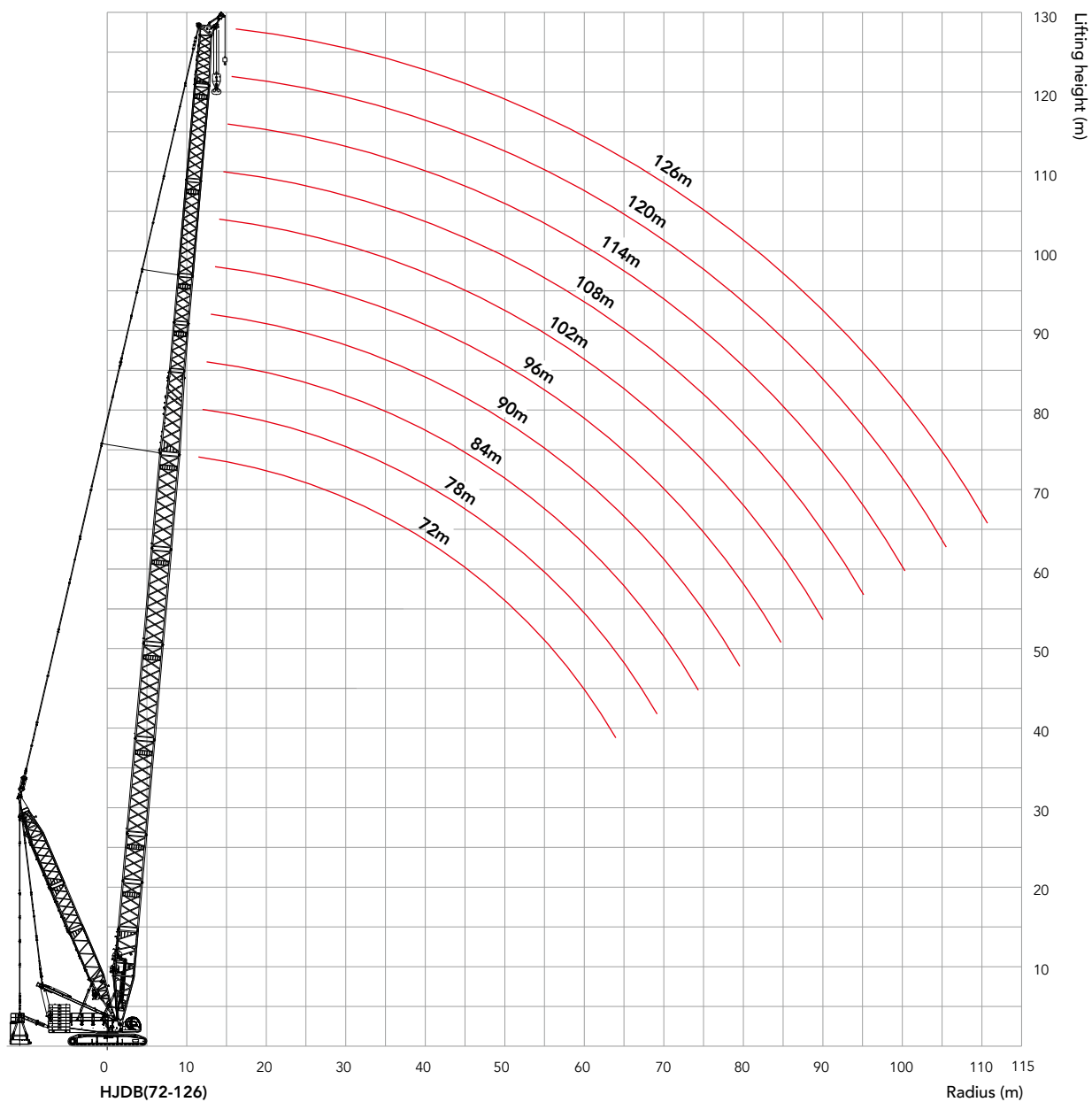
Boom length(m)	Boom insert				Jib insert	
	6m	12mA	12mB	12mC	6m	12m
72	2	1	1	-	-	-
78	1	1	2	-	-	-
84	2	1	2	-	-	-
90	1	1	2	1	-	-
96	2	1	2	1	-	-
102	2	1	2	1	1	-
108★	2	1	2	1	2	-
114★	2	1	2	1	1	1
120★	2	1	2	1	2	1
126★	2	1	2	1	1	2

Note: 12m boom base, 12m transition insert, 6m tapered luffing jib insert and 7.5m jib top are must; For combinations with " ★ ", the mid-point suspension cable must be used, otherwise, the boom may break.



HJDB(126m)

## Working Radius in HJDB



**Load Chart of HJDB****SCC4000A-2 Crawler Crane-HJDB Configuration**

Boom length 72m~126m, Superlift radius 15.5m, Superlift counterweight 250t, Rear counterweight 150t, Carbody counterweight 40t

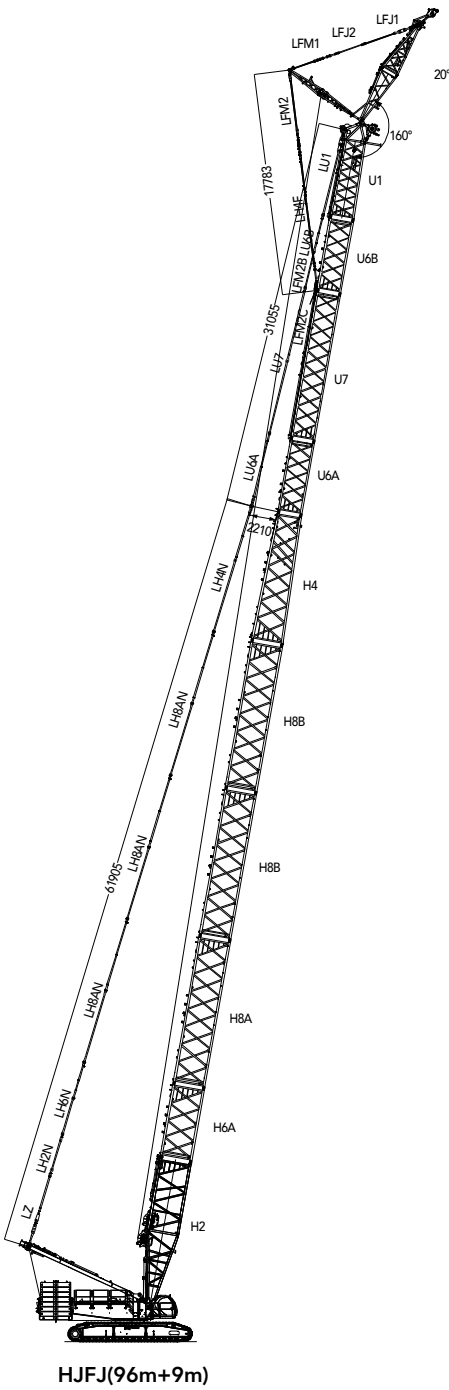
Radius (m)	72	78	84	90	96	102	108	114	120	126	Radius (m)
11	220*	207*									11
12	220*	207*	180*								12
14	220*	208*	181*	150*	133*	115*	99.9*				14
16	220*	208*	180*	151*	133*	115*	100*	87.5*	76.0*	66.3*	16
18	220*	207*	180*	151*	133*	115*	100*	87.5*	76.0*	65.8*	18
20	220	207*	180*	150*	133*	115*	100*	87.5*	75.9*	65.3*	20
22	220	208	180*	150*	132*	114*	100*	87.3*	75.7*	64.8*	22
24	217	208	179	150*	132*	114*	99.7*	87.2*	75.1*	64.3*	24
26	199	199	179	150*	132*	114*	96.2*	87.0*	74.5*	63.8*	26
28	184	184	179	150	132*	113*	92.8*	86.3*	73.9*	63.2*	28
30	171	171	170	149	131	113*	89.4*	85.6*	73.3*	62.7*	30
32	160	159	158	149	131	111*	86.5*	84.9*	72.6*	62.1*	32
34	149	149	148	148	130	110	83.7*	84.2*	72.0*	61.5*	34
36	140	140	139	139	129	109	80.9*	83.7*	71.4*	61.0*	36
38	132	132	131	130	128	106	78.1*	83.0*	70.7*	60.4*	38
40	125	124	123	123	122	100	75.9*	82.2*	70.1*	59.8*	40
44	112	112	111	110	110	89.9	71.5*	80.8	68.8*	57.8*	44
48	101	101	100	100	99.3	79.7	67.7*	77.2	67.5*	54.8*	48
52	91.3	91.4	91.0	91.1	90.3	71.8	64.0	74.1	64.8	52.1*	52
56	82.8	82.8	82.5	82.5	82.0	63.5	61.3	71.0	62.5	49.6*	56
60	75.3	75.4	75.1	75.1	74.6	56.5	58.7	68.4	59.9	47.7*	60
64	68.7	68.9	68.6	68.7	68.1	49.5*	56.1	65.8	58.0	45.7*	64
68		63.1	62.8	63.0	62.4	43.8*	53.7	62.2	56.1	43.9*	68
72			57.7	57.9	57.3	37.7*	51.7	57.1	54.4	42.5	72
76				53.3	52.8	32.7*	50.1	52.6	52.3	41.0	76
80				48.7	47.4	28.2*	48.5	48.5	48.3	39.9	80
84					41.4	23.0*	45.1	44.9	44.6	38.7	84
88						19.0*	41.7	41.5	41.2	37.8	88
92							38.6	38.4	38.2	36.9	92
96								35.6	35.4	35.3	96
100								33.0	32.8	32.7	100
104									30.3	30.3	104
108										28.0	108



**Boom Combination in HJFJ**

Boom Combination in HJFJ	
Boom length(m)	Jib length(m)
72	9
78	9
84	9
90	9
96	9

Note: Boom combination and the use of mid-point suspension cable in mixed boom configuration are the same as HJ configuration.



## Load Chart of HJFJ

SCC4000A-2 Crawler Crane-HJFJ Configuration 1/3						
Boom length 72m~96m, Jib length 9m, Boom to jib angle 10°, Rear counterweight 150t, Carbody counterweight 40t						
Radius (m)	72	78	84	90	96	Radius (m)
12	115.7					12
14	112.5	87.5	89.7	77.5	78.2	14
16	106.8	83.9	86.4	74.1	76.3	16
18	94	80.4	83.7	71.7	73.7	18
20	83.6	77.7	79.2	68.5	71.3	20
22	75	73.1	71.1	66.1	67.2	22
24	67.7	66	64.2	62.7	60.7	24
26	61.5	60	58.2	56.9	55.1	26
28	56.1	54.7	53.1	51.9	50.2	28
30	51.4	50.1	48.6	47.5	45.8	30
32	47.3	46.1	44.6	43.6	42	32
34	43.6	42.5	41.1	40.1	38.6	34
36	40	39.2	37.9	37	35.6	36
38	36.7	36.3	35.1	34.2	32.8	38
40	33.8	33.4	32.5	31.7	30.3	40
44	28.9	28.5	27.9	27.3	25.9	44
48	24.9	24.5	23.9	23.5	22.2	48
52	21.5	21.1	20.5	20.2	19.1	52
56	18.6	18.2	17.6	17.3	16.4	56
60	16.1	15.8	15.1	14.8	14	60
64	14	13.6	13	12.7	11.9	64
68	12.1	11.7	11.1	10.8	10	68
72	10.4	10	9.4	9.1	8.3	72
76		8.5	7.9	7.6	6.8	76
80			6.6	6.3	5.5	80
84				5.1	4.2	84
88				3.9	3.1	88

Unit: t

## Load Chart of HJFJ

SCC4000A-2 Crawler Crane-HJFJ Configuration 2/3						
Boom length 72m~96m, Jib length 9m, Boom to jib angle 15°, Rear counterweight 150t, Carbody counterweight 40t						
Radius (m)	72	78	84	90	96	Radius (m)
14	100.2	79.3	81.1			14
16	97.9	76.8	78.7	68.2	69.3	16
18	94.6	73.7	76.3	66.1	67.7	18
20	84.1	71.1	73.8	63.9	65.6	20
22	75.5	69.2	71.6	61.7	64	22
24	68.1	66.5	64.6	59.5	61.2	24
26	61.9	60.4	58.7	57.4	55.5	26
28	56.4	55.1	53.5	52.3	50.6	28
30	51.7	50.5	49	47.9	46.2	30
32	47.6	46.4	45	43.9	42.4	32
34	43.9	42.8	41.4	40.5	39	34
36	40.2	39.5	38.2	37.3	35.9	36
38	36.9	36.6	35.4	34.5	33.1	38
40	34	33.7	32.8	31.9	30.6	40
44	29.1	28.7	28.1	27.5	26.2	44
48	25	24.6	24.1	23.7	22.5	48
52	21.6	21.2	20.6	20.4	19.3	52
56	18.7	18.3	17.7	17.5	16.5	56
60	16.2	15.9	15.3	15	14.1	60
64	14.1	13.7	13.1	12.8	12	64
68	12.1	11.8	11.2	10.9	10.1	68
72	10.4	10.1	9.5	9.2	8.4	72
76		8.5	8	7.7	6.9	76
80			6.6	6.3	5.5	80
84			5.3	5.1	4.3	84
88				4	3.1	88

## Load Chart of HJFJ

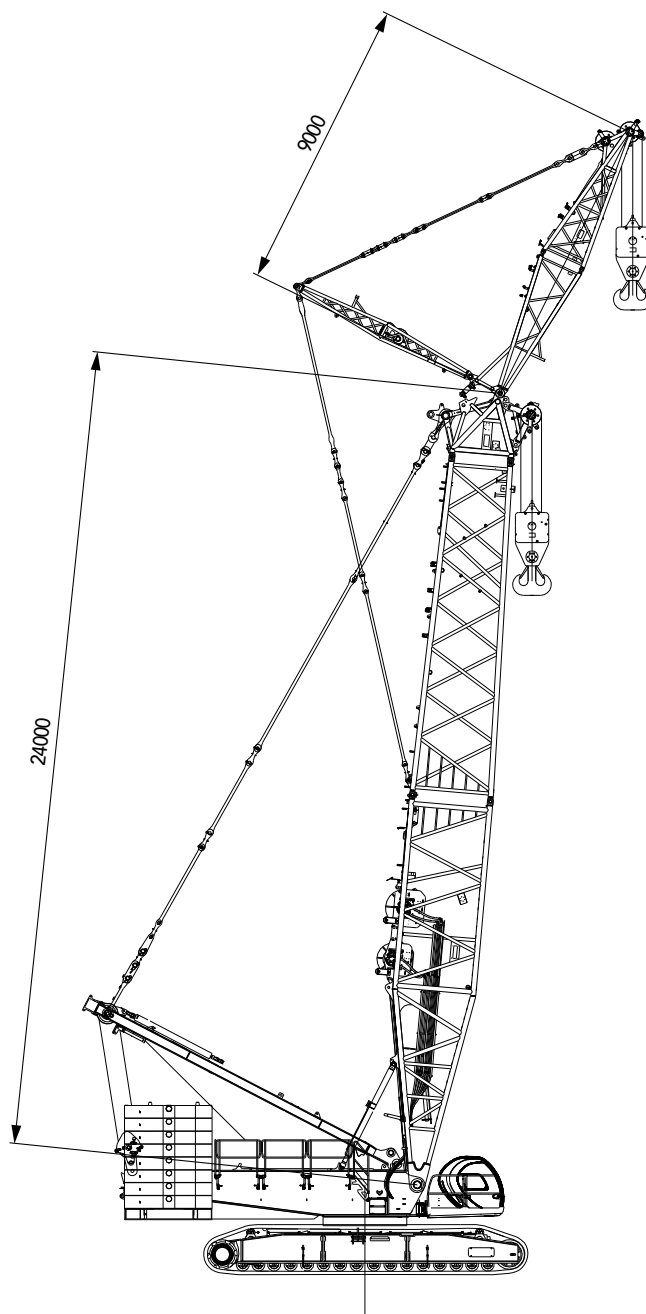
SCC4000A-2 Crawler Crane-HJFJ Configuration 3/3						
Boom length 72m~96m, Jib length 9m, Boom to jib angle 20°, Rear counterweight 150t, Carbody counterweight 40t						
Radius (m)	72	78	84	90	96	Radius (m)
14	90.2	72.8				14
16	88.8	70.6	71.9	63.6	64.3	16
18	87.6	68.3	69.8	61.2	62.5	18
20	84.7	66.1	68.1	59.5	61.1	20
22	75.9	64	66.5	57.7	59.6	22
24	68.6	62.3	65.1	56.2	58.1	24
26	62.3	60.8	59.1	54.5	56	26
28	56.8	55.5	53.9	52.7	51	28
30	52.1	50.8	49.3	48.2	46.6	30
32	47.9	46.7	45.3	44.3	42.7	32
34	44.1	43	41.7	40.8	39.3	34
36	40.4	39.8	38.5	37.6	36.2	36
38	37.2	36.8	35.6	34.8	33.4	38
40	34.2	33.9	33	32.2	30.8	40
44	29.2	28.9	28.3	27.7	26.4	44
48	25.2	24.8	24.2	23.9	22.7	48
52	21.7	21.4	20.8	20.5	19.5	52
56	18.8	18.5	17.9	17.6	16.7	56
60	16.3	15.9	15.4	15.1	14.3	60
64	14.1	13.8	13.2	12.9	12.1	64
68	12.2	11.8	11.3	11	10.2	68
72	10.4	10.1	9.5	9.3	8.5	72
76		8.6	8	7.8	7	76
80			6.6	6.4	5.6	80
84			5.4	5.1	4.3	84
88				4	3.2	88

## Boom Combination in FJh

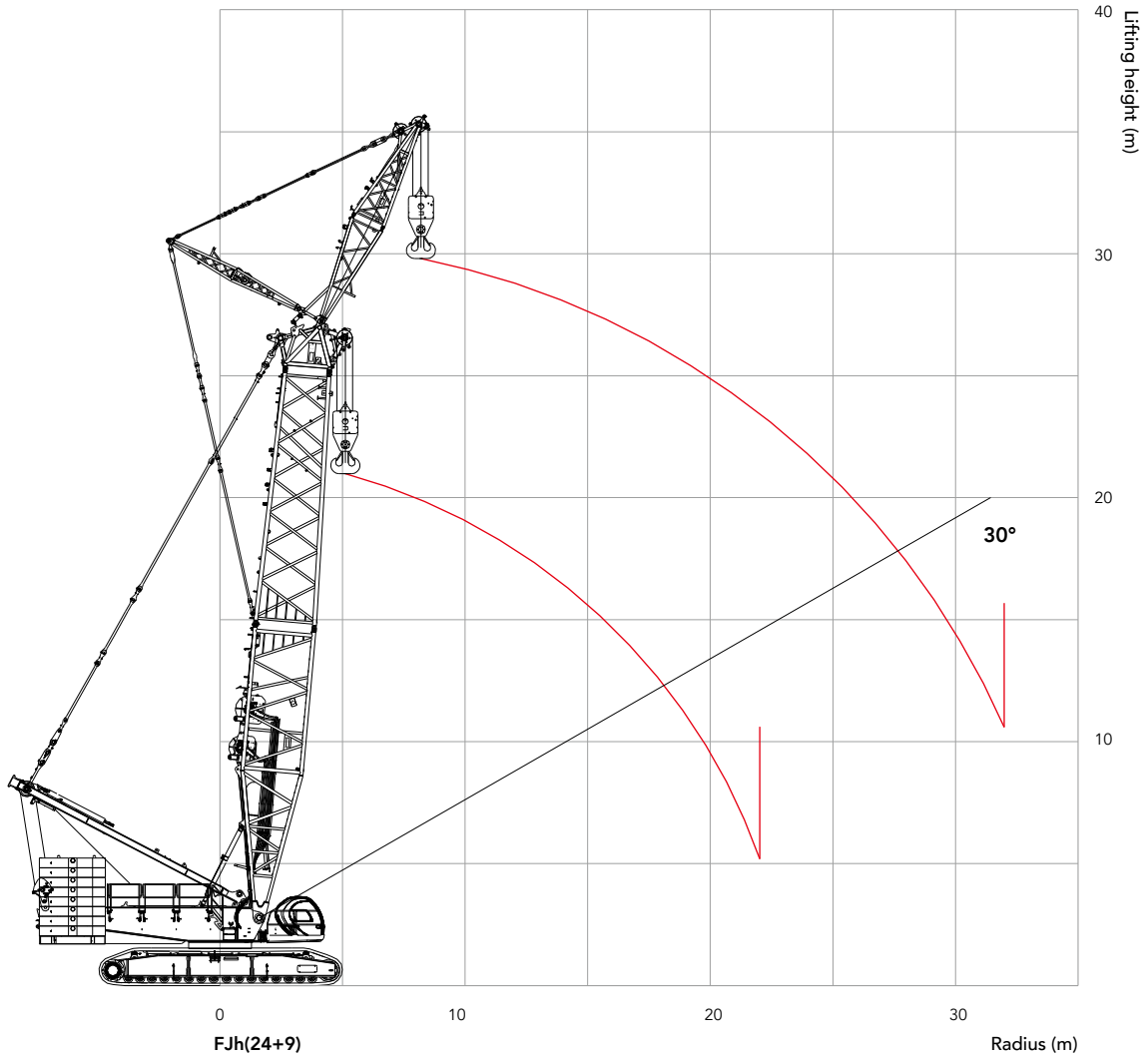
### Boom Combination in FJh

Boom length(m)	Jib length(m)
24	9

Note: the 9m jib insert is used in both FJh and HJFJ.



## Working Radius of FJh



Unit: t

## Load Chart of FJh

SCC4000A-2 Crawler Crane-FJh Configuration				
Boom to jib angle 20°, Rear counterweight 150t, Carbody counterweight 40t				
Boom length(m)		24		Boom length(m)
Jib length(m)		9		Jib length(m)
Radius(m)		Main hook(no load on aux. hook)	Aux. hook(no load on main hook)	Radius(m)
6		360.0		6
7		320.0		7
8		285.0	8.2/148	8
9		252.0	146.0	9
10		225.0	144.0	10
11		195.0	140.0	11
12		178.0	135.0	12
14		138.0	123.0	14
16		114.0	120.0	16
18		95.0	101.9	18
20		81.0	87.8	20
22		72.0	76.8	22
24			67.9	24
26			60.6	26
28			54.5	28
30			48.0	30

Notes:

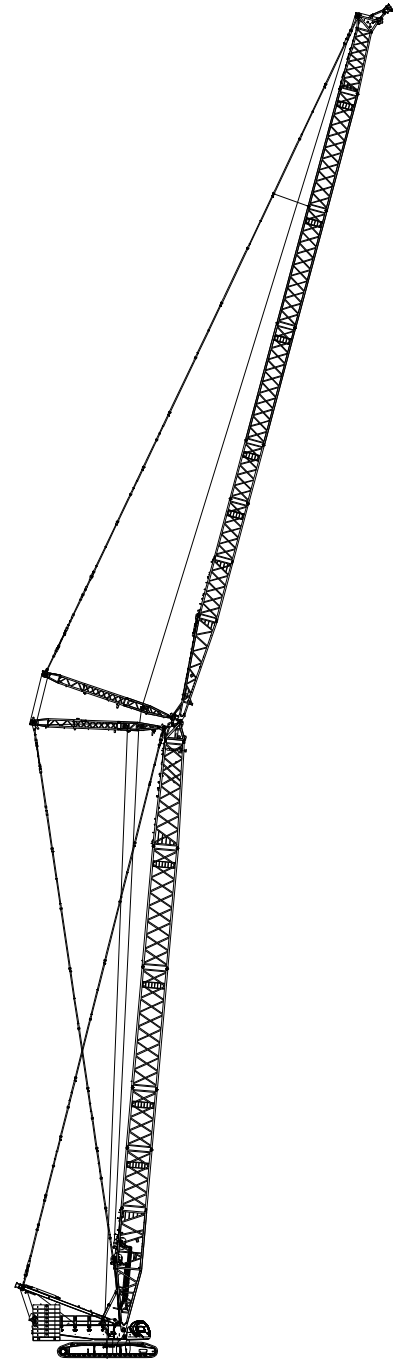
1. Actual Lifting Capacity shall deduct the weight of hook blocks, lifting devices, and wire ropes reeving between the hooks and boom head from the rate capacity.
2. Rated capacity in the load charts is valid when the crane is on firm, level and evenly-supported ground when load is lifted slowly and steadily without traveling.

## Boom Combination in LJ

### Boom Combination in LJ

Boom length(m)	Jib insert	
	6 m	12m
24	–	–
30	1	–
36	2	–
42	1	1
48	2	1
54	1	2
60	2	2
66	1	3
72★	2	3

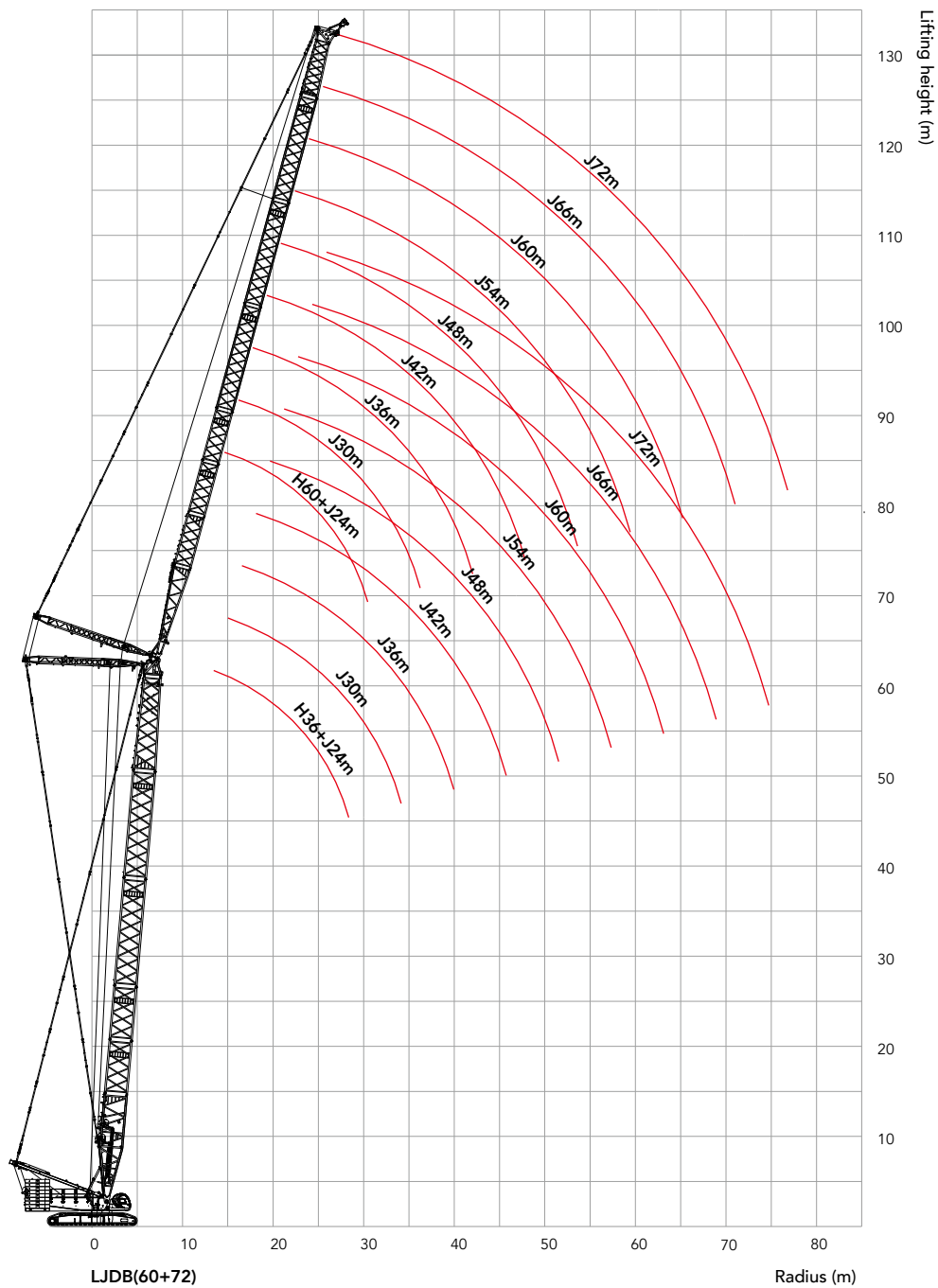
Note: Boom combination is the same as H configuration ;For jib combination, jib base, 6m tapered jib insert and jib top are must;For combination with " ★ ", the mid-point suspension cable must be used, otherwise, the boom may break.



LJ(60m+72m)



## Working Radius in LJ



**Load Chart of LJ****SCC4000A-2 Crawler Crane-LJ Configuration 1/3**

Boom length 36m, Boom angle 85°, Jib length 24m~72m, Rear counterweight 150t, Carbody counterweight 40t

Radius (m)	24	30	36	42	48	54	60	66	72	Radius (m)
14	141.7									14
16	123.6	119.7	116							16
18	109.4	106.1	103	100.1						18
20	98.1	95.2	92.4	89.9	87.3					20
22	88.8	86.2	83.8	81.5	79.2	77.1	74.9			22
24	81.1	78.7	76.5	74.5	72.4	70.5	68.5	66.5		24
26	73.1	72.4	70.3	68.4	66.5	64.8	62.9	61.2	56.9	26
28		66.2	65	63.2	61.4	59.8	58.1	56.5	54.9	28
30		60.6	60.1	58.7	57	55.5	53.9	52.4	50.8	30
32		55.7	55.3	54.7	53.1	51.7	50.1	48.7	47.3	32
34			51.1	50.7	49.6	48.3	46.8	45.5	44.1	34
36			47.4	47	46.5	45.2	43.8	42.6	41.2	36
38			44.1	43.7	43.2	42.5	41.1	39.9	38.6	38
40				40.8	40.3	39.9	38.7	37.5	36.3	40
44					35.4	34.9	34.3	33.4	32.2	44
48					31.3	30.9	30.3	29.8	28.7	48
52						27.4	26.9	26.4	25.8	52
56							24	23.5	22.9	56
60							21.5	21	20.4	60
64								18.9	18.3	64
68									16.4	68

Unit: t

## Load Chart of LJ

SCC4000A-2 Crawler Crane-LJ Configuration 2/3										
Boom length 54m, Boom angle 85°, Jib length 24m~72m, Rear counterweight 150t, Carbody counterweight 40t										
Radius (m)	24	30	36	42	48	54	60	66	72	Radius (m)
16	110.9	107.4								16
18	98.8	95.8	92.9							18
20	89	86.4	83.8	81.5						20
22	80.9	78.5	76.2	74.1	71.9	70				22
24	74.1	71.9	69.8	67.9	65.9	64.1	60.1			24
26	68.3	66.3	64.3	62.5	60.7	59	57.2	51.3		26
28	63.3	61.4	59.6	57.9	56.2	54.6	52.9	49.7	44.4	28
30		57.1	55.4	53.8	52.2	50.7	49.1	47.7	43	30
32		53.4	51.7	50.2	48.7	47.3	45.8	44.4	41.4	32
34		50.1	48.5	47	45.5	44.2	42.8	41.5	39.8	34
36			45.5	44.2	42.7	41.5	40.1	38.8	37.5	36
38			42.9	41.6	40.2	39	37.6	36.4	35.1	38
40				39.3	37.9	36.7	35.4	34.3	33	40
44				35.2	33.9	32.8	31.6	30.5	29.2	44
48					30.5	29.5	28.3	27.2	26.1	48
52						26.6	25.5	24.5	23.4	52
56						24	23.1	22.1	21	56
60							20.8	20	18.9	60
64								18.1	17.1	64
68									15.5	68
72									14	72

**Load Chart of LJ****SCC4000A-2 Crawler Crane-LJ Configuration 3/3**

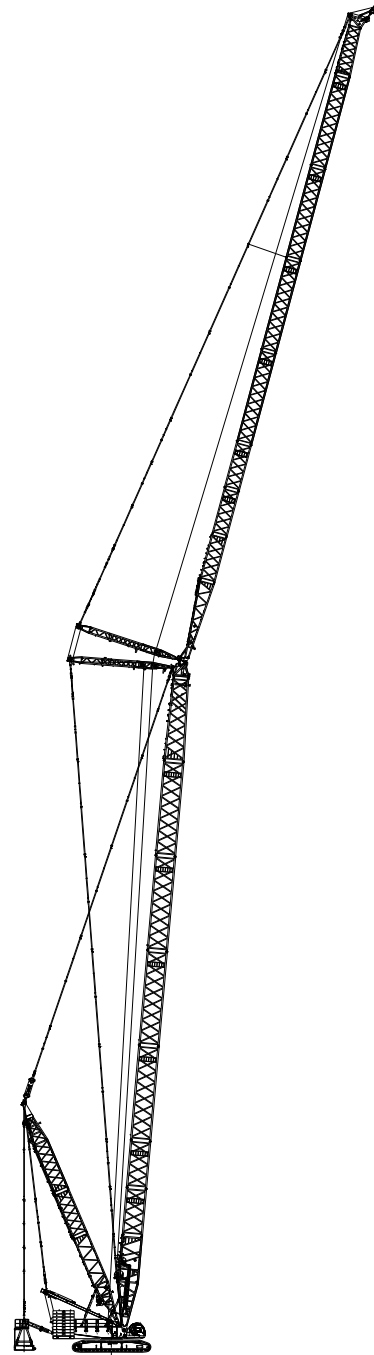
Boom length 60m, Boom angle 85°, Jib length 24m~72m, Rear counterweight 150t, Carbody counterweight 40t

Radius (m)	24	30	36	42	48	54	60	66	72	Radius (m)
16	106.8									16
18	95.3	92.4	89.6							18
20	86	83.4	80.9	78.7						20
22	78.3	76	73.7	71.6	69.5					22
24	71.8	69.7	67.6	65.7	63.7	61.9	55.7			24
26	66.2	64.2	62.3	60.6	58.7	57.1	53.5	47.7		26
28	61.4	59.5	57.7	56.1	54.4	52.8	51.1	46.1	41.3	28
30		55.4	53.7	52.2	50.5	49.1	47.5	44.3	39.8	30
32		51.8	50.2	48.7	47.2	45.8	44.3	42.4	38.5	32
34		48.6	47	45.6	44.1	42.8	41.4	40.1	37	34
36			44.2	42.8	41.4	40.2	38.8	37.5	35.4	36
38			41.6	40.3	39	37.8	36.4	35.2	33.9	38
40			39.4	38.1	36.7	35.6	34.3	33.1	31.8	40
44				34.1	32.9	31.8	30.5	29.4	28.2	44
48					29.6	28.5	27.4	26.3	25.1	48
52						25.5	24.6	23.6	22.5	52
56						22.1	22	21.3	20.2	56
60							19.1	18.9	18.2	60
64								16.7	16.4	64
68									14.5	68
72									12.7	72

## Boom Combination in LJDB

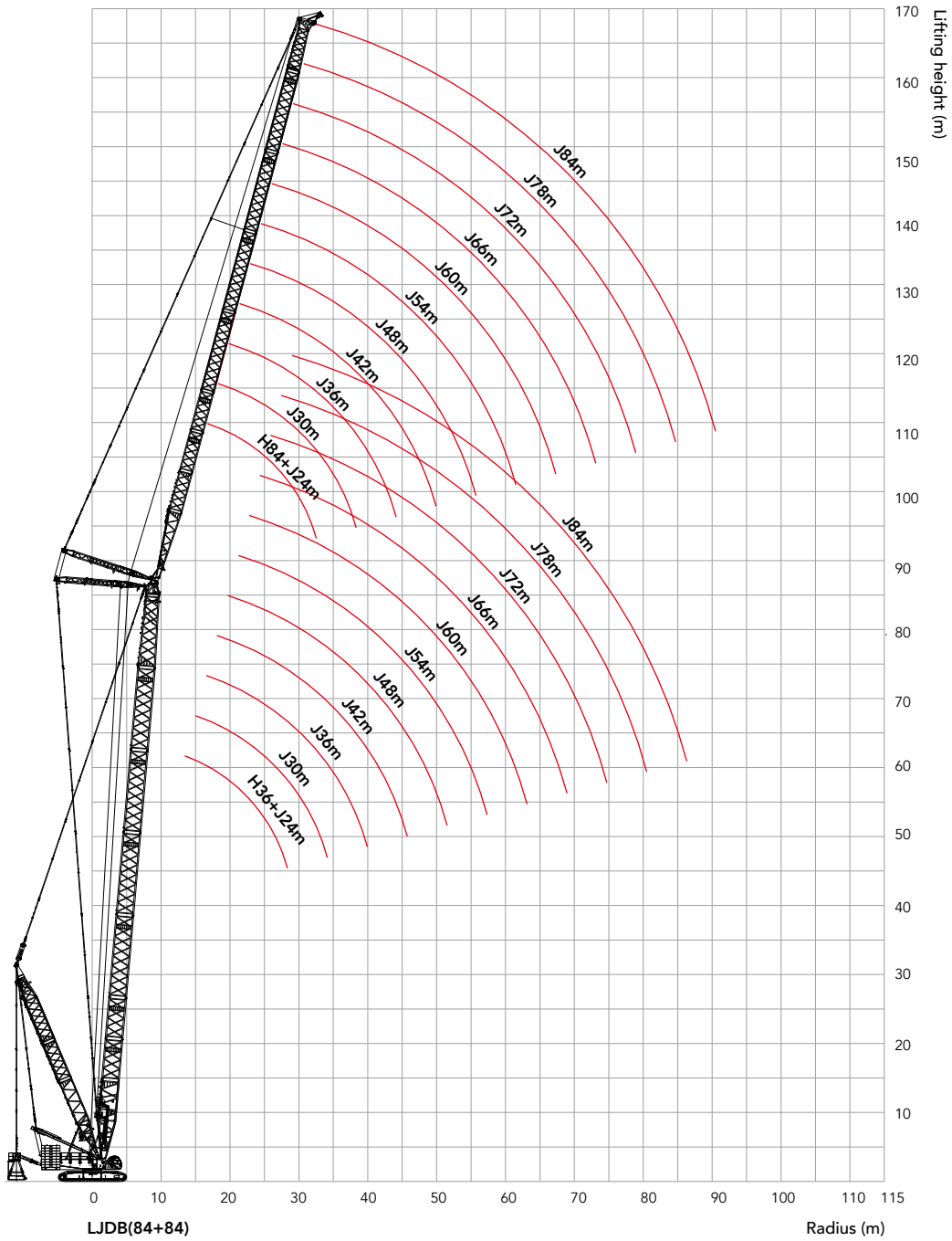
Boom Combination in LJDB		
Boom length(m)	Jib insert	
	6 m	12m
24	-	-
30	1	-
36	2	-
42	1	1
48	2	1
54	1	2
60	2	2
66	1	3
72★	2	3
78★	1	4
84★	2	4

Note: Boom combination is the same as H configuration. ;For jib combination, jib base, 6m tapered insert and jib top are must;For combination with " ★ ", the mid-point suspension cable must be used, otherwise, the boom may break.



LJDB(84m+84m)

# Working Radius in LJDB



Unit: t

## Load Chart of LJDB

SCC4000A-2 Crawler Crane-LJDB Configuration 1/5												
Boom length 36m, Boom angle 85°, Jib length 24m~84m, Superlift radius 15m, Superlift counterweight 250t, Rear counterweight 150t, Carbody counterweight 40t												
Radius(m)	24	30	36	42	48	54	60	66	72	78	84	Radius(m)
14	202.8*											14
16	198.4*	183.8*	165.4*									16
18	194.2*	181.1*	164.0*	138.8*								18
20	173.2*	166.0*	154.8*	135.1*	115.1*							20
22	154.8*	150.6*	142.3*	129.6*	112.0*	95.9*	81.8*					22
24	138.3*	136.4*	130.7*	121.3*	107.4*	93.2*	80.4*	67.4*				24
26	123.0*	124.8*	121.0*	113.0*	102.8*	90.4*	78.5*	66.8*	57.9*			26
28		113.4*	111.3*	104.7*	98.1*	87.1*	76.1*	66.2*	57.5*	47.7*		28
30		103.2*	102.6*	97.9*	92.8*	83.3*	73.7*	64.5*	56.8*	47.3*	39.9*	30
32		93.2*	95.0*	91.2*	87.6*	79.9*	71.4*	62.5*	55.4*	46.8*	39.5*	32
34			88.4*	85.3*	82.3*	76.1*	68.6*	60.1*	54.0*	46.4*	39.0*	34
36			81.3*	79.4*	77.7*	72.3*	65.4*	56.6*	52.6*	45.9*	38.6*	36
38			74.7*	73.8*	73.1*	68.6*	61.4*	53.6*	51.2*	45.0*	38.1*	38
40				68.7*	68.5*	64.8*	58.3*	50.3*	49.6*	43.3*	37.7*	40
44					59.5*	57.6*	51.4*	44.3*	46.4*	38.5*	35.4*	44
48					51.9*	51.0*	46.0*	39.1*	43.2*	34.4*	31.8*	48
52						45.1*	41.1*	34.5*	39.6*	30.5*	28.4*	52
56							36.9*	30.9*	36.4*	27.2*	25.1*	56
60							33.7*	27.7*	33.4*	24.0*	22.3*	60
64								24.7*	30.2*	20.9*	19.3*	64
68									27.6*	18.4*	16.8*	68
72										16.1*	14.8*	72

**Load Chart of LJDB**

SCC4000A-2 Crawler Crane-LJDB Configuration 2/5												
Boom length 48m, Boom angle 85°, Jib length 24m~84m, Superlift radius 15m, Superlift counterweight 250t, Rear counterweight 150t, Carbody counterweight 40t												
Radius(m)	24	30	36	42	48	54	60	66	72	78	84	Radius(m)
14	196.3*											14
16	190.7*	166.3*										16
18	176.2*	156.4*	137.1*									18
20	160.1*	145.8*	130.3*	114.5*	98.9*							20
22	145.5*	134.8*	122.3*	109.1*	95.9*	83.7*						22
24	131.4*	123.9*	114.0*	103.5*	92.1*	81.1*	70.7*					24
26	118.0*	113.0*	105.7*	97.0*	87.6*	78.3*	68.9*	60.0*	51.7*			26
28	106.6*	102.5*	97.3*	91.2*	83.5*	75.1*	66.6*	58.7*	51.5*	43.0*		28
30		93.3*	89.9*	84.6*	78.9*	71.8*	64.2*	57.0*	50.4*	42.8*	36.0*	30
32		84.5*	82.6*	78.8*	74.2*	68.0*	61.8*	55.3*	49.3*	42.5*	35.8*	32
34			75.7*	73.0*	69.6*	64.7*	59.1*	53.3*	47.9*	42.2*	35.5*	34
36			69.6*	67.9*	65.0*	60.9*	56.3*	51.3*	46.2*	41.0*	35.2*	36
38			63.7*	62.9*	60.4*	57.6*	53.6*	48.9*	44.8*	40.0*	34.9*	38
40				58.1*	56.4*	53.9*	50.9*	46.9*	43.2*	38.8*	34.4*	40
44				49.3*	48.9*	47.5*	45.5*	42.7*	39.8*	36.1*	32.4*	44
48					42.2*	41.8*	40.5*	38.6*	36.3*	33.5*	30.5*	48
52						36.6*	35.8*	34.6*	33.2*	30.8*	28.3*	52
56							31.7*	30.9*	30.1*	27.7*	25.8*	56
60							28.0*	27.7*	27.1*	24.3*	22.6*	60
64								24.7*	24.3*	21.5*	20.1*	64
68									21.8*	19.2*	17.4*	68
72										16.6*	15.2*	72
76										14.5*	13.0*	76
80											11.3*	80



Unit: t

## Load Chart of LJDB

SCC4000A-2 Crawler Crane-LJDB Configuration 3/5												
Boom length 60m, Boom angle 85°, Jib length 24m~84m, Superlift radius 15m, Superlift counterweight 250t, Rear counterweight 150t, Carbody counterweight 40t												
Radius(m)	24	30	36	42	48	54	60	66	72	78	84	Radius(m)
16	151.6*											16
18	141.3*	125.7*	110.9*									18
20	129.8*	117.9*	105.9*	93.7*								20
22	119.3*	109.9*	99.9*	89.8*	80.0*							22
24	108.3*	101.8*	93.7*	85.6*	76.8*	68.2*	60.1*					24
26	98.8*	93.1*	87.4*	80.7*	73.0*	66.0*	58.6*	51.5*				26
28	89.1*	85.4*	81.1*	75.7*	69.5*	63.2*	56.7*	50.2*	44.3*			28
30		78.1*	75.0*	70.7*	65.6*	60.4*	54.4*	48.8*	43.5*	37.0*		30
32		71.1*	69.0*	65.7*	61.6*	57.1*	52.0*	47.1*	42.3*	36.9*	31.1*	32
34		65.3*	63.2*	60.9*	58.0*	54.3*	49.7*	45.2*	40.9*	36.5*	30.9*	34
36			58.2*	56.6*	54.0*	51.0*	47.3*	43.5*	39.5*	35.5*	30.8*	36
38			53.5*	52.4*	50.6*	48.1*	44.9*	41.5*	38.1*	34.3*	30.5*	38
40			49.3*	48.4*	47.2*	45.3*	42.6*	39.8*	36.7*	33.1*	29.7*	40
44				41.3*	40.7*	39.7*	37.9*	35.9*	33.6*	30.6*	27.8*	44
48					35.3*	34.7*	33.7*	32.1*	30.5*	28.2*	25.8*	48
52						30.3*	29.6*	28.6*	27.5*	25.7*	23.8*	52
56						26.5*	26.0*	25.6*	24.6*	23.4*	21.8*	56
60							22.9*	22.6*	22.0*	21.0*	19.9*	60
64								20.0*	19.7*	18.9*	18.0*	64
68									17.5*	17.0*	16.2*	68
72									15.6*	15.1*	14.6*	72
76										13.6*	13.1*	76
80											11.7*	80

## Load Chart of LJDB

SCC4000A-2 Crawler Crane-LJDB Configuration 4/5												
Boom length 72m, Boom angle 85°, Jib length 24m~84m, Superlift radius 15m, Superlift counterweight 250t, Rear counterweight 150t, Carbody counterweight 40t												
Radius(m)	24	30	36	42	48	54	60	66	72	78	84	Radius(m)
16	119.6*											16
18	113.2*	100.8*										18
20	105.7*	95.8*	86.0*									20
22	97.5*	90.0*	81.6*	74.0*	65.8*							22
24	90.2*	84.0*	76.9*	70.4*	63.5*	56.8*						24
26	82.7*	77.6*	72.2*	66.7*	60.6*	54.8*	49.1*					26
28	75.7*	71.5*	67.5*	62.9*	58.0*	52.8*	47.5*	42.6*				28
30	69.2*	66.1*	62.5*	59.1*	54.9*	50.3*	45.8*	41.2*	36.8*	31.0*		30
32		60.5*	58.1*	55.0*	51.5*	47.8*	43.8*	39.7*	35.7*	30.9*	26.1*	32
34		55.8*	53.8*	51.3*	48.4*	45.3*	41.7*	38.3*	34.7*	30.8*	26.0*	34
36			49.7*	47.7*	45.4*	42.8*	39.9*	36.6*	33.5*	30.0*	25.8*	36
38			45.9*	44.3*	42.4*	40.3*	37.8*	35.1*	32.2*	28.9*	25.7*	38
40			42.3*	41.4*	39.9*	37.9*	35.8*	33.4*	30.8*	28.0*	25.1*	40
44				35.6*	34.7*	33.5*	32.0*	29.9*	28.1*	25.8*	23.3*	44
48					30.2*	29.2*	28.3*	26.8*	25.4*	23.5*	21.5*	48
52					26.1*	25.7*	25.0*	24.0*	22.8*	21.5*	19.8*	52
56						22.5*	21.9*	21.2*	20.4*	19.3*	17.9*	56
60							19.2*	18.8*	18.1*	17.2*	16.2*	60
64								16.5*	16.1*	15.5*	14.6*	64
68								14.6*	14.4*	13.8*	13.1*	68
72									12.7*	12.2*	11.7*	72
76										10.9*	10.4*	76
80											9.3*	80
84											8.2*	84

Unit: t

## Load Chart of LJDB

SCC4000A-2 Crawler Crane-LJDB Configuration 5/5												
Boom length 84m, Boom angle 85°, Jib length 24m~84m, Superlift radius 15m, Superlift counterweight 250t, Rear counterweight 150t, Carbody counterweight 40t												
Radius(m)	24	30	36	42	48	54	60	66	72	78	84	Radius(m)
18	89.0*											18
20	84.5*	76.3*	68.3*									20
22	79.3*	72.3*	65.6*	59.0*								22
24	74.2*	68.1*	62.3*	56.8*	51.3*							24
26	68.8*	64.0*	59.0*	54.1*	49.2*	44.6*						26
28	63.8*	59.6*	55.3*	51.4*	47.0*	42.8*	38.6*	33.2*				28
30	59.1*	55.4*	52.0*	48.3*	44.8*	41.0*	37.3*	33.0*	28.4*			30
32		51.4*	48.5*	45.6*	42.5*	39.2*	35.8*	32.5*	28.3*	23.9*		32
34		47.6*	45.2*	42.7*	40.0*	37.3*	34.3*	31.1*	28.0*	23.8*	19.9*	34
36		44.2*	42.0*	40.1*	37.8*	35.3*	32.6*	30.0*	27.3*	23.6*	19.8*	36
38			39.3*	37.4*	35.4*	33.3*	31.1*	28.6*	26.1*	23.3*	19.6*	38
40			36.4*	35.0*	33.3*	31.5*	29.5*	27.3*	25.2*	22.7*	19.4*	40
44				30.4*	29.1*	27.8*	26.4*	24.7*	22.9*	21.0*	18.9*	44
48					25.5*	24.6*	23.5*	22.2*	20.6*	19.2*	17.4*	48
52					22.3*	21.7*	20.8*	19.9*	18.6*	17.3*	15.8*	52
56						19.0*	18.3*	17.6*	16.6*	15.6*	14.4*	56
60							16.1*	15.5*	14.8*	13.9*	12.9*	60
64							14.3*	13.8*	13.2*	12.4*	11.6*	64
68								12.1*	11.7*	11.1*	10.3*	68
72									10.3*	9.8*	9.2*	72
76										8.7*	8.1*	76
80										7.6*	7.2*	80
84											6.3*	84



## Zhejiang Sany Equipment Co.,LTD

Sany Industrial Park, No.2087 Daishan Road, Wuxing District, Huzhou, Zhejiang Province, China Zip 313028  
Service hotline 400 887 8318  
Complaints hotline 400 887 9318

— G e n t i n f o r m a t i o n —

Any change in the technical parameters and configuration due to advancement in technology may occur without prior notice. The machine in the figures may include auxiliary equipment. This brochure is for reference only, and goods in kind shall prevail. Copyright at Sany Heavy Industry. No part of this catalogue may be copied, recorded or used for any purpose without written approval from Sany Heavy Industry.

© Printed in June 2022 in China

[www.sanyglobal.com](http://www.sanyglobal.com)



Instantly scanning for reading more