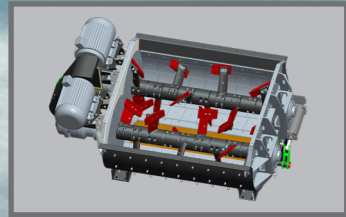


ADVANTAGES

Modular Design

HZS60F plant comprises of Modular Container type mixer structure design & foldable aggregate panels, facilitating quick assembly and low reword at site, faster assembling and dismantling plus easy and safer transport.



Twin Shaft Mixing Technology

Sany Twin Shaft mixer produces homogeneous mix with its 3D mixing technology and assuring complete concrete discharge. Highly resistant hardened liners in mixer and cone gives higher life cycle and low maintenance cost.

Safe Operation & Maintenance

Sany is adhered to provide a safe machine considering operation and maintenance, and providing spacious, wider and safe inspection space on mixer platform, second level structure is equipped with a surround maintenance platform plus separate working platform is available for skip drive mechanism. The inclined belt from HZS60(01) has high stability, it is covered by color plate on the top and with right and left walking platform by both sides for easily maintenance.

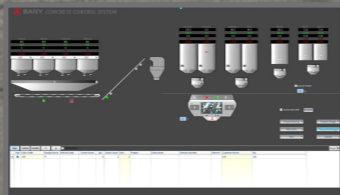


Intelligent Skip Drive Mechanism

Dual speed skip operations is intelligently controlled by Variable FREQUENCY Drive, smooth and jerk free lifting of bucket without any impact load on drive assembly and DG Set. In turn safe operation and high life of skip drive mechanism.

Advanced software and Control System

Sany batching plants are operated with Advanced software with real time simulation of operations on screen, operator friendly and easy to use, providing unlimited storage of mix designs and production data storage from present to historical.



Spacious and Ergonomic Control Cabin

Control panel is mounted in a spacious control cabin providing comfortable working atmosphere to plant operator, cabin has thermal insulating walls to maintain working temperature and with self-standing feature cabin can be mounted on simple PCC.

SANY®

HZS60F BATCHING PLANT

HZS60F 混凝土搅拌站



SPECIFICATIONS

No.1	型号 Model	HZS60F
1	理论生产率 Theoretical Productivity(m ³ /h)	60
2	提升电机功率 Motor Power(kW)	2×18.5
3	搅拌机公称容量 Nominal Capacity of Mixer(L)	1000
4	骨料最大尺寸 Max. Aggregate Size(mm)	60
5	粉罐容量 Silo Capacity (t) (Standard)	2×50
6	配料站容量 Aggregate Capacity(m ³)	3×10
7	骨料种类 Category of Aggregate	3
8	卸料高度 Discharging Height(m)	4.2
9	装机功率 Rated Power(kW)	100
10	骨料计量范围及精度 Aggregate Metering Accuracy	(600-2500)±2%
11	水泥计量范围及精度 Cement Metering Accuracy	(100-700)±1%
12	粉煤灰计量范围及精度 Fly-ash Metering Accuracy	/
13	水计量范围及精度 Water Metering Accuracy	(80-250)±1%
14	外加剂计量范围及精度 Additive Metering Accuracy	(8-20)±1%
15	提升方式 Feeding Mode	SKip
17	参考重量 Reference Weight(t)	39

GLOBAL CASES



GLOBAL SERVICE



SANY's business covers more than 200 countries and regions across the world and also they are all provided with professional service personnel and secondary warehouses, among which the four overseas plants in America, India, Germany and Brazil have service center and central warehouse to provide all-round support in services and spare parts

CONCRETE MACHINERY DIVISION



Concrete Mixers



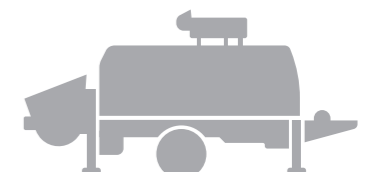
Truck-mounted Concrete Pumps



Placing Booms



CONCRETE BATCHING PLANTS



Stationary Concrete Pumps

SANY is the Global leader in concrete machinery manufacturing. SANY offers full range of concrete machinery from concrete batching plants, truck mixers, Stationary Concrete Pumps, Truck-mounted Concrete Pumps, Placing Booms etc. SANY concrete machinery offers reliable performance, wide adaptability, easy operation, high efficiency and lower maintenance cost.

SANY HEAVY INDUSTRY CO., LTD.

SANY Industry Town, Changsha Economic and Technological Development Zone,
Hunan Province, China
Service Line: +86 4006 098 318 E-mail: crd@sany.com.cn

SANY[®]
QUALITY CHANGES THE WORLD.