

SANY[®]

SPECIFICATION



Hot recycling equipment SHR120C8

QUALITY CHANGES THE WORLD
www.sanyglobal.com



SANY HEAVY INDUSTRY CO., LTD.

Sany Industrial City, Changsha Economic and Technological Development Zone, Hunan Province, China
Zip: 410100
Fax: 0086-731-85835199 Enquiry and Complaint Telephone: 0086-4006098318

Warm reminder:
In order to ensure the safe and reliable operation of your diesel engine, please add V1 diesel and urea solution in line with national standards, refer to the instruction manual and relevant standards for details.
As the technology is constantly updated, technical parameters and configurations are subject to change without prior notice.
The machine on the picture may include additional equipment, this album is for reference only, subject to the actual.
The copyright belongs to SANY Heavy Industry, and no part of this catalog may be reproduced or copied for any purpose without SANY Heavy Industry's written permission.

© China print Apr. 2025 edition



Scan the QR code to follow
the WeChat Official Account of
SANY Road Machinery

V 20250409

More eco-friendly

- ◆ The regenerated flue gas is introduced into the native drum for secondary combustion, high-temperature incineration and cracking, and odor elimination. Emissions meet environmental protection requirements.

Safer

- ◆ Material shortage detection and countdown safety shutdown procedure, exhaust gas high temperature warning and safety shutdown procedure, storage bin full material warning and protection procedure, one-button automatic shutdown procedure to ensure the safe operation of equipment in all aspects.

CB Series

Product Highlights

Achieve 100% recycling of road milling materials, reduce asphalt usage, significantly reduce operating costs, and enhance competitiveness

High additive ratio

- ◆ The proportion of recycled materials added reaches over 60%. It features an ultra-long drum design, with a discharge temperature above 140℃. Under standard conditions, the theoretical production capacity is 120t/h.

Anti-sticking material

- ◆ Round rake tooth lifting plate, tail gas heating at the end of the drum, arc-shaped silo, all-round independent heat transfer oil insulation, automatic lubricating oil spraying system to improve the anti-sticking effect.

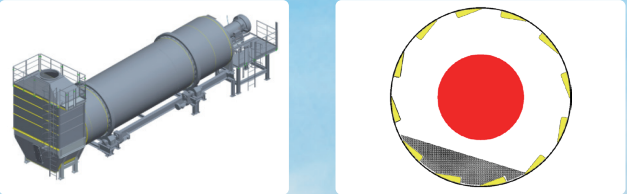


SHR120C8

Hot recycling equipment
CB Series

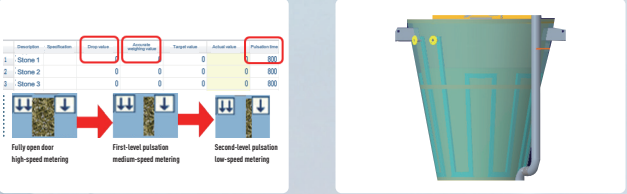
Ultra-long drum drying technology

- ◆ Ultra-long regeneration drum design, optimal "three-zone blade" ratio layout, long heat exchange time and 15% increase in efficiency;
- ◆ The temperature of the recycled material can reach above 140° C; no furnace, and maintenance-free. The burner directly dries the stone blocks, the flame does not contact the stone blocks, avoids aging, and the temperature of stone blocks rises quickly.



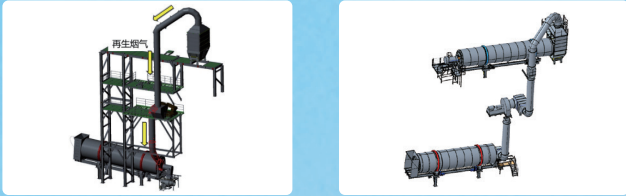
Ultra-precision metering technology

- ◆ The dynamic error of measurement is reduced to less than 1%, which is better than the industry standard by 3%;
- ◆ The "pulse jitter" + "multi-speed regulation" metering method is adopted to achieve rough weighing, pulse jitter precise weighing, and reduce the aggregate metering error to 20 kg.



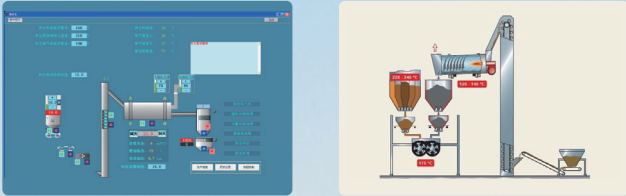
Flue gas treatment technology

- ◆ The whole machine runs at full negative pressure without ash emission;
- ◆ Asphalt flue gas is introduced into the native drum and treated by secondary combustion, without secondary pollution.



Intelligent safety technology

- ◆ Safety flameout procedure for countdown of material shortage;
- ◆ Exhaust high temperature warning and safe shutdown procedures;
- ◆ Warning and protection procedures for full storage bins;
- ◆ One-button automatic flameout procedure.



Additional product configurations

Product optional configuration

Item	Description of optional configuration
Automated stockyard	It can realize automatic loading, storage and unloading of raw materials, greatly saving the area of storage site and reducing production costs
Electric heating asphalt tank	No boiler inspection, safe and environmentally friendly, easy to operate, low off-peak production cost
Warm-mix foamed asphalt	The stone heating temperature only needs to be heated to 130°C, saving 20% energy; exhaust gas and smoke emissions are reduced by 50%
Crushing and screening equipment	It can realize the second or third gear crushing and screening of recycled materials, with a production capacity of more than 100t/h
Wood fiber addition	Integrated into the host computer control, with a high degree of automation; static secondary weighing, accurate weighing and reliable performance
Emulsified asphalt equipment	Modular design, integrated integration, complete functions, strong adaptability, good oil-water ratio and emulsion quality
Asphalt storage warehouse	Available in 100T, 200T, 300T, 500T, 1000T and 2000T configurations

Intelligent supporting facilities and services

Item	Description of optional configuration
Adaptive control of cold aggregate	Automatically adjust the cold aggregate loading speed, maintain the balance of hot aggregate bin level, reduce overflow, save energy, and improve raw material utilization
Intelligent control of asphalt tank	Realize online management of asphalt inventory, real-time monitoring of asphalt temperature and liquid level, realize automation of operations such as asphalt filling, tank switching, and heating, and eliminate manual work
Predictive maintenance procedures	By collecting the temperature, pressure and other data of mixing machine and drying drum bearings, the health status of key parts can be detected in real time, and early faults can be intelligently identified and promptly repaired to reduce shutdown losses.
Intelligent weighing system	Adopting IoT technology, automatic identification of vehicle numbers, automatic metering and ticket issuance, eliminating or reducing manual entry; data cloud-based, real-time traceability
Intelligent management and control of asphalt batching plant	The function covers application scenarios such as material procurement, raw material warehousing, production monitoring, finished product warehouse-out and front-end electronic receipt to realize the digitalization of the whole procurement-production-sales process.

Note: Any additional configuration shall be priced separately.

Economic value analysis

Customer operating costs are reduced by nearly RMB 3.6 million/year

1. Aggregate savings: RMB 1.8 million/year

- ◆ The amount of recycled materials added is 30%, and the aggregate savings are RMB 30/ton. According to the annual output of 200,000 tons, it is about RMB 1.8 million.

2. Asphalt savings: RMB 1.8 million/year

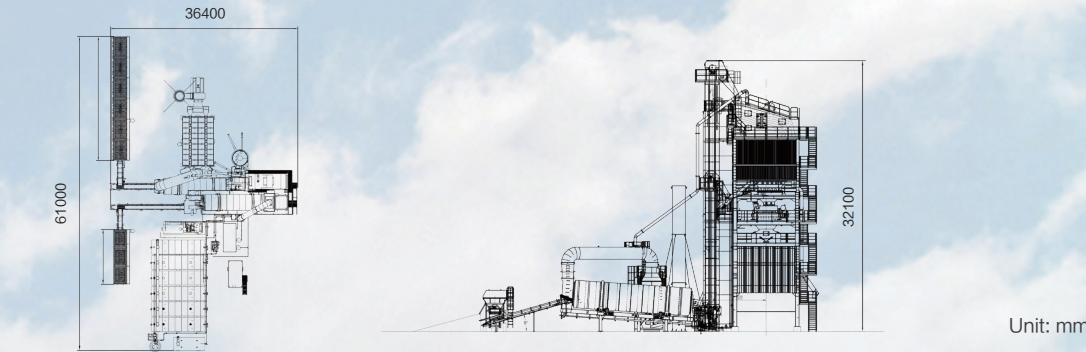
- ◆ The amount of recycled materials added is 30%, and the asphalt savings are RMB 30/ton. According to the annual output of 200,000 tons, it is about RMB 1.8 million.

Note: The calculation is based on an annual output of 200,000 tons, 100 working days in a year, and an average available time of 10h/day.

Product Parameters

◆ Overall dimensions

The following are standard configuration measurement values; actual values may vary depending on optional components.



Item	SHR120C8
Rated production capacity (t/h)	100-120
Volume of cold aggregate bin (m3)	13
Number of cold aggregate bins	2
Feeding height (m)	3.3
Feeding width (m)	3.5
Conveying capacity of feeding belt conveyor (t/h)	120
Conveying capacity of loading belt conveyor (t/h)	130
Conveying capacity of elevator (t/h)	130
Burner power (MW)	14
Roller drive motor power (kW)	4×22
Drying drum diameter (m) × length (m)	2.5×12
Hot aggregate bin (t)	10
Weighing scale (t)	3
Dynamic measuring accuracy	±2%
Fuel consumption rate (kg/t)	6.5
Centrifugal fan for flue gas treatment (kW)	55
Standard installed capacity (kW)	255