



SANY Group Co., Ltd., China





QUALITY CHANGES THE WORLD

Leadership

Liang Wengen
Principal Consultant & The Chairman
of the Supervisory Board

Board of Directors



Liang Wengen



Tang Xiuguo



Xiang Wenbo



Liang Zaizhong



Yi Xiaogang



Zhou Fugui



Fu Weizhong



Peng Song



Yu Hongfu



Liang Linhe



Dai Qinghua



Huang Jianlong



Chen Jiayuan



Liu Hua



Xiang Silong



Tang Lihua



Yuan Jinhua



Qi Jian

Human Beings Are Great for Their Dreams

I enjoy watching both sunsets and sunrises. I'm always moved by the splendor, beauty and sense of accomplishment of each day's colorful sunset also by the feeling of renewal and promise brought on by each morning's sunrise. In the same way, I have great dreams for my company, SANY. As a powerful inner driver, these dreams push me to succeed, to excel. I believe that my hard work can contribute to the success of SANY in the world's arena.

Because of risks and challenges, starting a business takes courages. But in less than two decades, SANY has grown from its humble beginnings to a leader in construction machinery manufacturing. The SANY brand and its products are now recognized as high quality. Encouraged by this success, I have become even more determined to fulfill the monumental

mission of expanding our product lines and improving our quality even more. We will be truly successful only when SANY's products are superior to those of our strongest competitors.

SANY's goal is to reshape China's construction machinery industry with advanced SANY technology, to build products recognized for their quality worldwide while continuously improving them through innovation, to exceed our customers' expectations with unparalleled quality and services, then finally to make sure that Made in China means top quality to the rest of the world.

Human beings are great for their dreams. SANY is living its dreams step by step.

About

SANY Group

Founded in 1989, SANY Group is a multinational company that is pursuing the vision of "building first-class enterprises, fostering first-class talents, and making first-class contributions to society". With the strategy of "Globalization, Digitalization, Decarbonization", SANY has been striving to build a global brand and become a leading equipment manufacturer in the industry.

With three listed companies, including SANY Heavy Industry, SANY International, and SANY Renewable Energy, SANY's core businesses are equipment manufacturing for engineering machinery, covering a full product portfolio, including concrete machinery, earthmoving machinery, hoisting machinery, road machinery, piling machinery, port machinery, mining machinery, petroleum drilling machinery, etc. Among these, SANY's concrete machinery has been occupying the largest market shares globally, and the acquisition of Putzmeister in 2012 further strengthened the market position. In 2020, SANY's excavators won the global sales champion for the first time. In addition, the large tonnage crane, crawler crane, piling machinery, mobile port machinery, coal mining machinery, and so on are all leading in sales in China.

Besides, SANY is also striving to enter the new energy industry, including wind power, hydrogen energy, photovoltaic power, and energy storage. SANY also vigorously promotes the electrification of existing products, contributing to the emission reduction goals of the United Nations.

In 2024, with a sales network covering over 180 countries and regions, SANY's overseas sales set a record high, exceeding 8.21 billion US dollars, accounting for 45% of the group's total sales. In 2024, SANY Group makes its debut on the "2024 Forbes China Go-International Flagship Brands Top 30" list. At the same time, the GYBrand Global Brand Research Institute included SANY in the "2025 World's Top 500 Brands List" for the first time, listing at the 468th position as the only engineering machinery company on the list.

Sticking to our mission, "Quality Changes the World", SANY invests about 5% of its annual revenue in R&D. By the end of 2024, SANY has applied for a total of 32,530 patents, of which 16,264 have been awarded.

SANY remains at the forefront of transformative change, harnessing the power of technology to drive progress and shape a brighter future for generations to come. As we forge ahead, SANY is committed to delivering superior products and solutions that empower our customers and communities worldwide. Together, we will continue to build, innovate, and lead the way towards a better tomorrow.



Why We Are Called “SANY”?

SANY, the literal meaning of which is "three ones" in Chinese, derives its name from the English pronunciation of the company's Chinese name (三一 Sānyī). The name represents our company's vision to achieve three primary objectives: **to build first-class enterprises, to foster first-class talents, and to make first-class contributions to society.**

The company's logo visually embodies this vision, featuring three interlinked numeral ones, reflecting the stability of the manufacturing industry. The centripetal symbol represents the united efforts of all SANY members in pursuing their shared dream.

SANY

Entrepreneurial Journey

QUALITY CHANGES THE WORLD **SANY**

In late 1985, Liang Wengen, Tang Xiuguo, Yuan Jinhua and Mao Zhongwu left their positions at state-owned enterprises to pursue an entrepreneurial venture in Maotang, Lianyuan. In the beginning, they were faced with a myriad of challenges including the industrial and economic climate of the nation. Through perseverance, they overcame these obstacles and successfully established the Hunan Lianyuan Welding Material Factory.

Over the years, the factory experienced significant growth, and by 1991, it had become the largest private enterprise in Loudi, boasting a production value exceeding 15 million USD. After conducting extensive research for over two years, Liang Wengen and Xiang Wenbo devised a dual-entry strategy to expand their business into the central city of Changsha and

the construction machinery industry. Consequently, SANY Heavy Industry was officially founded in Changsha in 1994.

From independently developing their first trailer pump to making a breakthrough in the excavator market and ultimately becoming a titan in the construction machinery sector and a front runner in the new energy industry, SANY's journey from humble beginnings to continual breakthrough innovations has fundamentally altered the global perception of "Made in China".

Today, SANY's aspirations extend beyond being the global leader in sales. We are dedicated to establishing ourselves as a renowned enterprise, a world-class brand, and a trailblazer in the fusion of industrial and digital technologies.



1989

Starting from scratch

Liang Wengen, Tang Xiuguo, Mao Zhongwu and Yuan Jinhua founded Hunan Lianyuan Welding Material Factory in Lianyuan, Hunan province.



2003

A listed company

SANY Heavy Industry was successfully listed on the Shanghai Stock Exchange. SANY Heavy Machinery Co., Ltd. was founded, focusing on excavators and petroleum drilling machinery.



2012

Putzmeister made a member of SANY Group

SANY acquired the leading German concrete machinery manufacturer Putzmeister.



2021

Ranking 468th in Forbes Global 2000

SANY Heavy Industry ranked first among heavy equipment manufacturers in China and second in the world.



1994

Advancing into heavy machinery industry

Hunan Lianyuan Welding Material Factory was officially renamed to Hunan SANY Group Co., Ltd. and its headquarters officially moved to Changsha.



2011

Recognized in a leading publication

SANY Heavy Industry entered the FT Global 500 ranking of the world's largest companies.

2020

Sales revenue exceeding 15 billion USD

SANY Heavy Industry became the first heavy equipment manufacturer with sales revenue exceeding 15 billion USD in China. SANY sold 98,705 excavators in 2020, accounting for 15% of the total volume for excavator sales in the global market.



2024

Go-International Flagship Brands Top 30

The list of the "2024 Forbes China Go-International Series Selection" included SANY in the "Go-International Flagship Brands Top 30" for the first time.

INDUSTRIAL LAYOUT



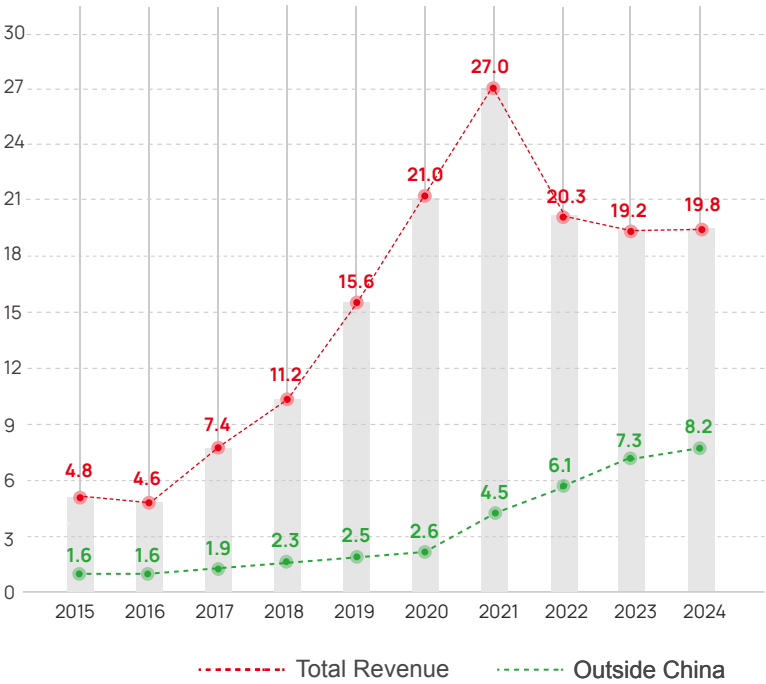
QUALITY CHANGES THE WORLD

INDUSTRIAL LAYOUT

As a leading manufacturer of construction and mining machinery, renewable energy system, and cloud service provider, SANY expands international footprints with 16 industrial bases outside China and 7 industrial clusters in China, supporting our customers to realize their self-worth.



Sales Revenue of SANY Group from 2015 to 2024
(in billion US dollars)



- Headquarters
- R&D Center
- Sales Region Outside China
- Factory of Putzmeister

16

Industrial Bases Outside China

7

Industrial Clusters in China

47

Lighthouse Factories Worldwide

5

R&D Centers

912

Parts Warehouses Outside China

900+

Service Sites Outside China

89%

Employee Localization Rate Outside China

KARAWANG, INDONESIA

Export China's Intelligent Manufacturing

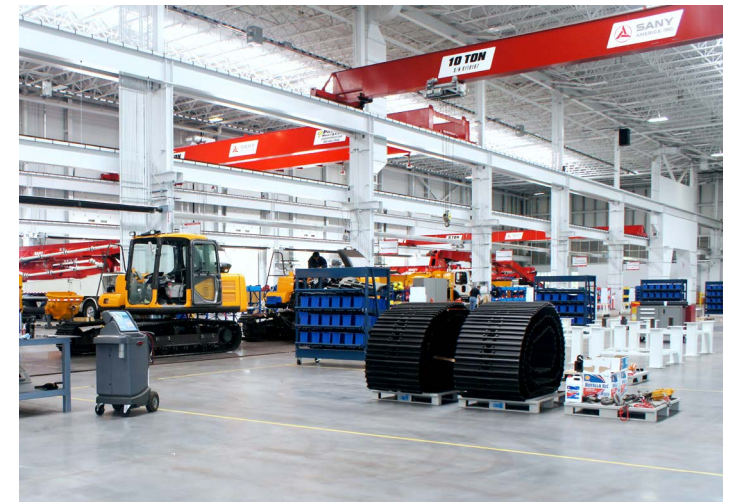
Located in the KIM Industrial Park in Karawang, SANY's Indonesia factory spans approximately 100,000 square meters and has an annual capacity of 3,000 units. As SANY's first lighthouse factory outside China, the factory is also the first overseas manufacturing base of China's construction machinery built in full accordance with Industry 4.0 standards and the first systematic overseas export case of China's intelligent manufacturing of construction machinery. On September 12, 2023, Phase II of the Indonesia Industrial Park held a groundbreaking ceremony.



PEACHTREE, USA

Made for America, More than Machines

Established in 2007, SANY America, located in Peachtree, Georgia, and covering an area of 37,000 square meters, mainly engages in pump trucks, hydraulic excavators, crawler cranes, and rough-terrain cranes. SANY America not only provides high-quality machinery to the market but also practices its social responsibility.



BEDBURG, GERMANY

Men & Machines

Versed in design and engineering, SANY Europe was inaugurated in Bedburg, Germany, in 2011. SANY Europe offers a wide range of CE compliant products, including hydraulic excavators, mobile port machinery (reach stacker, empty container handler, heavy duty forklift), rotary drilling rigs and crawler cranes for the European market.



PUNE, INDIA

Incredible Industrial Implementation

Established in 2002, SANY India has emerged as a key player in the construction equipment industry, offering the widest range of machinery across India and South Asia. With an investment of over INR 1,000 crores since 2012, SANY India has developed a world-class manufacturing facility in Chakan, Pune, spread across 90 acres. This facility integrates R&D, quality inspection, testing, and service infrastructure, ensuring superior product development. To meet increasing demand, SANY India has recently expanded its manufacturing capacity with a new facility.



PUTZMEISTER

One Team, Dual Brands

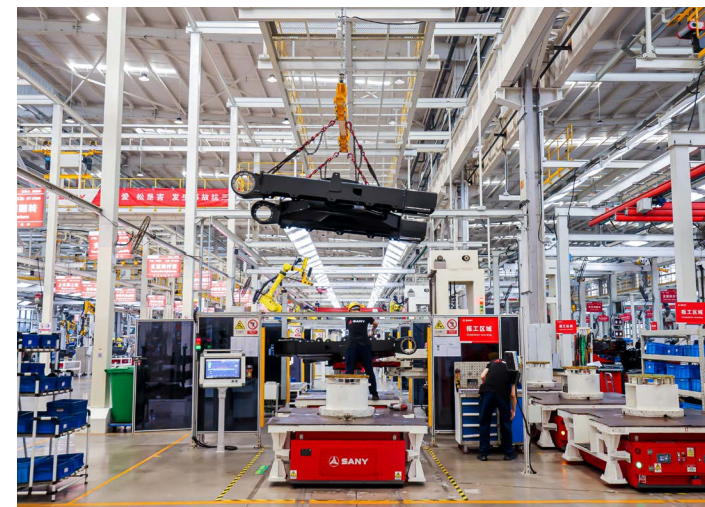
Famous for its nickname "Elephant", Putzmeister joined SANY Group in 2012 and has continued its legendary story together with SANY's PC. In the first picture, Putzmeister is supporting the most challenging project: renovation of a bridge across the Hoover Dam, USA.



SHANGHAI

East Production Center

The Shanghai-centered cluster, including industrial parks in Lingang, Kunshan, Changshu, Nantong, Rudong, and Huzhou, is home to SANY's heavy machinery BG and its subsidiary SANY Palfinger. SANY's excavators, loaders, crawler cranes, loader cranes, and environmental protection equipment are mainly produced here.



BEIJING

Diverse Footprint in the Capital

Beijing, the capital of China, is where SANY Heavy Industry's headquarters and SANY Renewable Energy are located. The Nankou Industrial Park is home to the Precast Concrete Factory of the SANY Construction Industry, SANY's Piling Machinery Lighthouse Factory, and SANY Renewable Energy Factory, mainly producing piling machinery, precast concrete, and wind power equipment.



CHANGSHA

A Beacon of Success

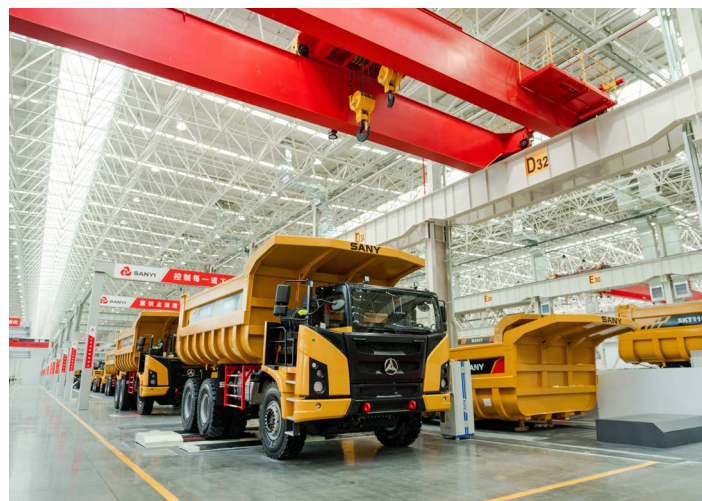
As a place where SANY achieved great success, Changsha is also where SANY Group's headquarters is located, including Xingsha Industrial Park, Smart Heavy-duty Industrial Park, and industrial parks in surrounding cities like Ningxiang, Yiyang, Changde, Loudi, and Shaoyang. SANY's concrete machinery, road machinery, hoisting machinery, heavy-duty trucks and fire-fighting equipment are mainly produced here. Nowadays, production facilities are highly automated with robotic arms and computerized conveyors.



XI'AN

A Catalyst for Progress

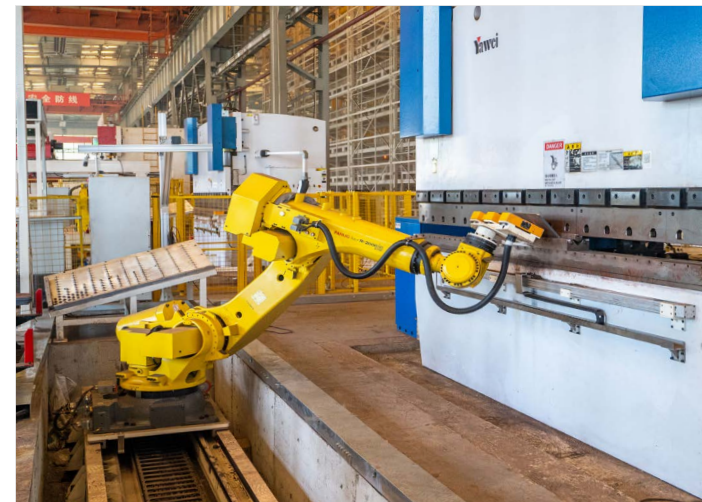
The intelligent manufacturing industrial park in Xi'an, which mainly produces off-highway mining trucks and hydraulic supports, rolled off the first equipment in March 2023. The factory plans to produce 12,000 sets of hydraulic supports and 6,000 wide-body dump trucks annually with an annual output value of 1.43 billion USD, which is of great significance to enhance the production capacity of China's wide-body dump trucks and promote the development of the mining industry.



SHENYANG

Mining Trip in the Old Industrial Base

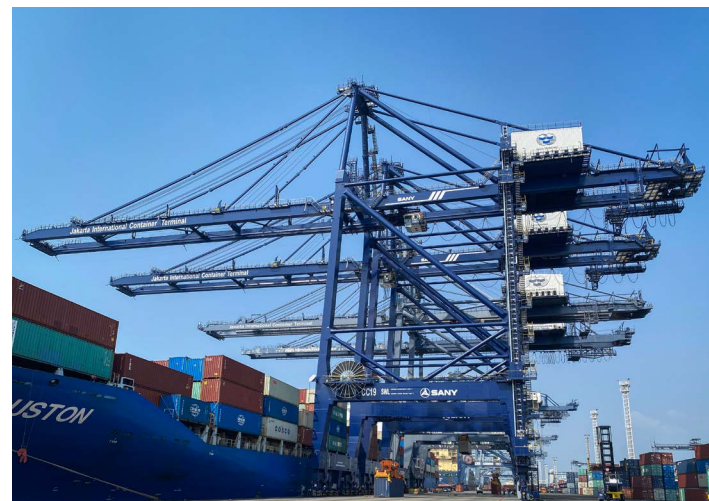
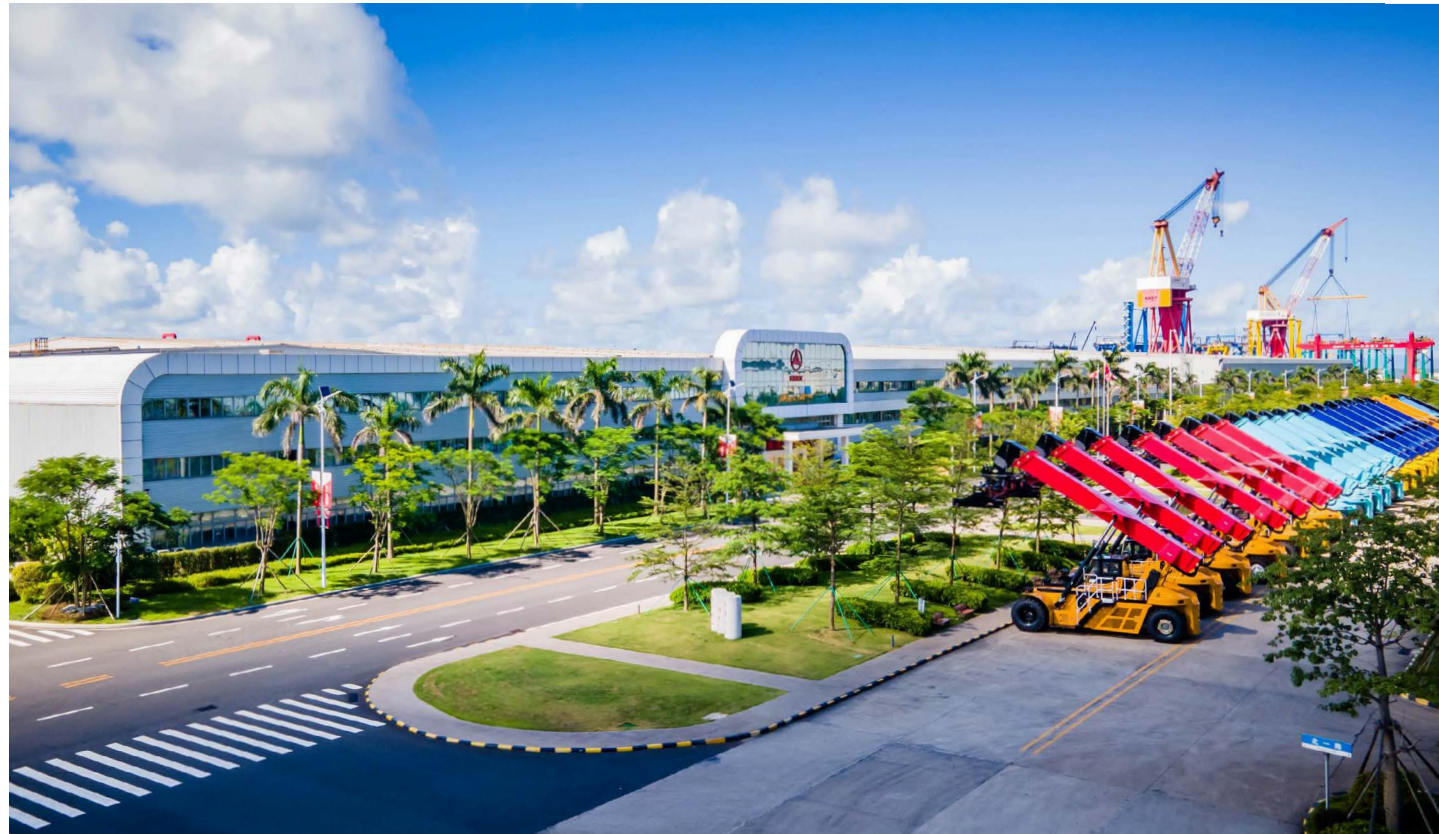
Situated in Northeastern China, Shenyang is home to SANY International Development Ltd., a subsidiary of SANY Group specializing in cutting-edge mining machinery and coal mining equipment. In 2009, SANY International Development Ltd. was listed on the Hong Kong Stock Exchange, becoming the first coal mining machinery manufacturer listed in Hong Kong. From computer-aided design and rapid prototyping to comprehensive test tracks, technologies are being applied to make our equipment solid.



ZHUHAI

Port City, Port Machinery

SANY Zhuhai Industrial Park, which opened in 2015, covers an area of 2,500 acres with a 1-kilometer coastline. The park has built a total of 300,000 square meters of factory space, including a 500,000-square-meter assembly base for marine engineering equipment, and has an annual production capacity valued at 2.1 billion USD.



XINJIANG

Wild West, Golden Opportunities

SANY Northwest industrial complex is one of the strategic facilities that strengthens the connection of China and Central Asia. The complex is supplying northwest China, Central Asia, and Russia with a comprehensive product portfolio for construction and mining.

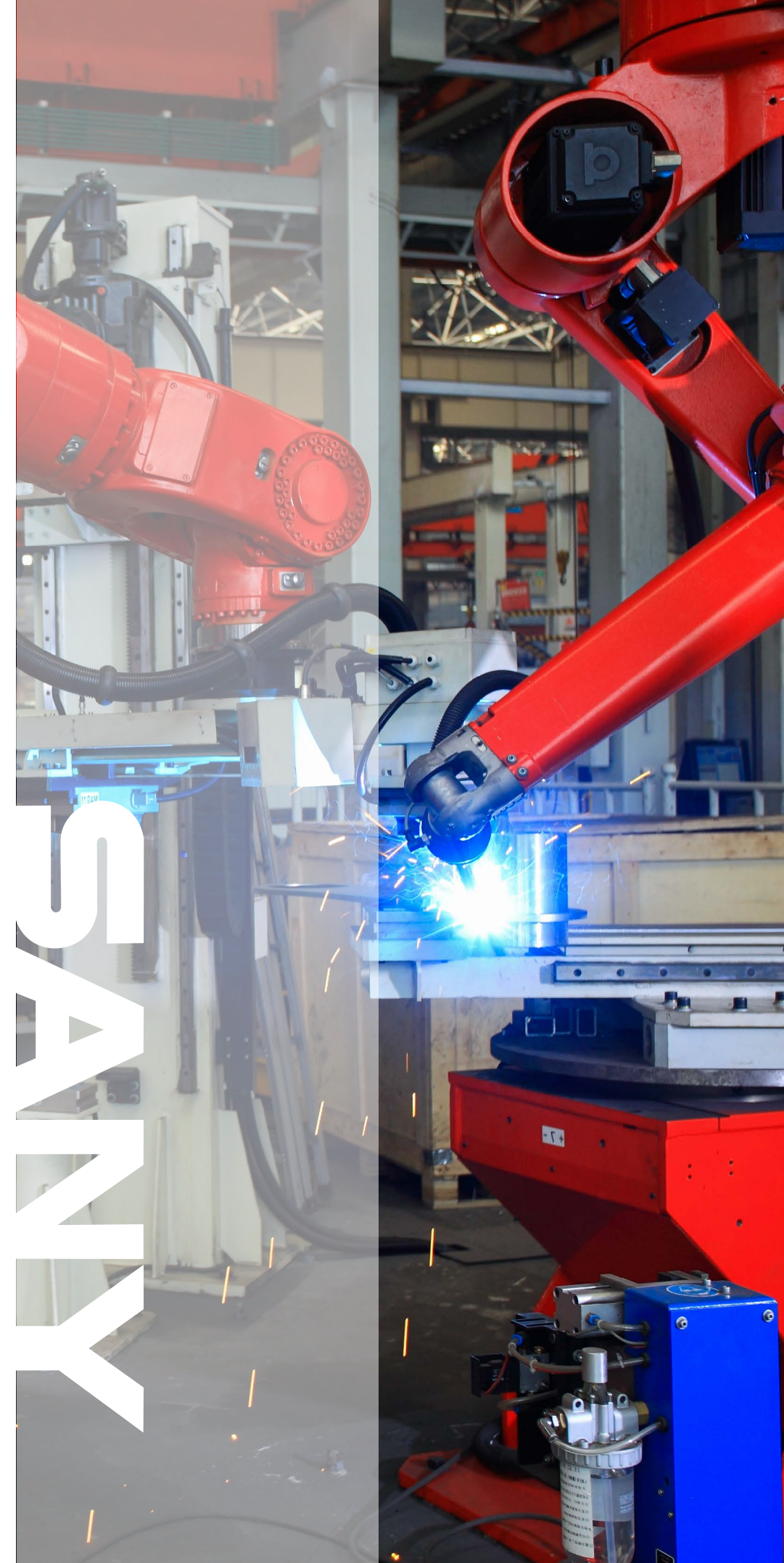


INTELLIGENT MANUFACTURING & DIGITALIZATION



SAFARI

QUALITY CHANGES THE WORLD



THE INDUSTRIAL ECOSYSTEM

“T2E”: “Three Transformations” Strategy Builds the Ecosystem

- “Hard Technology”
- Globalization, Digitalization, Decarbonization
- SANY Industrial Vocational and Technical College, Finance

Vertical: Intelligent Manufacturing Resources

- Material, Structure, Transmission, Control, Networking
- R&D, Supply, Production, Sales, Service
- ...

Horizontal: Digital Platform

- ROOTCLOUD
- iSANY
- ...

Wind Power and New Energy Ecosystem

SANY Renewable Energy
(688349)

Wind Energy, Photovoltaic
Power, Hydrogen Energy,
Energy Storage

Micro-grid Solution



Education

Engineering and Construction Ecosystem

SANY Heavy Industry
(600031)

Earthmoving, Pilling,
Pumping, Lifting, Emergency
Equipment

Intelligent Construction



Mining and Logistics Ecosystem

SANY International
(00631)

Mining, Port, Petroleum,
Sanitation

Intelligent Mining
& Logistic



Finance

20+ Industry
Cloud Platforms

80+
Equipment Types

1 Million+
Machines

20 Million+
PcTeam Components

60+
Countries

5,400+ Industrial
Applications

iSANY + IIOT
“Excavator Index”

Sales & Service

- 600+ dealers worldwide
- 180+ sales regions & contries
- Over 100 billion yuan in sales revenue

Production

- 50+ Lighthouse Factories worldwide
- Over 2,000 hectares of industrial land globally
- Over 7 million m² of factory space worldwide
- 40+ global industrial parks

SMART
MANUFACTURING
RESOURCE

R&D

- 10,000+ R&D personnel
- 10,000+ patents
- 100+ self-developed industrial software

Supply

- 3,000+ strategic suppliers
- 18,000+ authorized suppliers
- Over 120 billion yuan in annual procurement

LIGHTHOUSE FACTORY

Currently, SANY has 47 “Lighthouse Factories” worldwide, three of which - the SANY Piling Machinery Factory in Beijing, the No. 18 Factory in Changsha, and the Blade Factory in Shaoshan - are certified by the Davos World Economic Forum (WEF) and the Shaoshan Blade Factory is the world’s first certified wind power “Lighthouse Factory”.





In 2021, the Davos World Economic Forum (WEF) published the latest batch of "Lighthouse Factories" in the global manufacturing industry and SANY's piling machinery factory in Beijing made the list, becoming the first certified lighthouse factory among heavy equipment manufacturers.

Facing the ever-changing and increasingly complex demands of the construction machinery market, SANY applied up-to-date technologies such as human-machine collaboration, automation, AI and IoT technologies, boosting productivity by 85% while reducing production lead time by 77% (from 30 to 7 days). The digital transformation of SANY prompted the launch of a new subsidiary company, SANY Robot Technology Co., Ltd., propelling SANY to become the pioneer of intelligent manufacturing.

In 2022, the No. 18 Factory in Changsha was included in the new list of lighthouse factory in the global manufacturing sector as the most advanced and smartest factory in the industry. Relying on the ROOTCLOUD, the factory's 9 major manufacturing processes, and 32 typical production scenarios are fully automated. As a result, the site expands production capacity by 123%, improves labor productivity by 98%, and reduces unit manufacturing cost by 29%.

On October 8, 2024, WEF unveiled its latest list of "Lighthouse Factories", in which SANY Renewable Energy's (SANY R.E.) blade factory in Shaoshan, China made the list, becoming the world's first wind power "Lighthouse Factory". The factory owns the industry's first digital meta platform. With only an iPad, managers can monitor real-time operations and production data of the whole factory. With technologies like robot and laser guidance, the factory shorten the production time for a single 100-meter blade from over 40 hours to 25 hours.



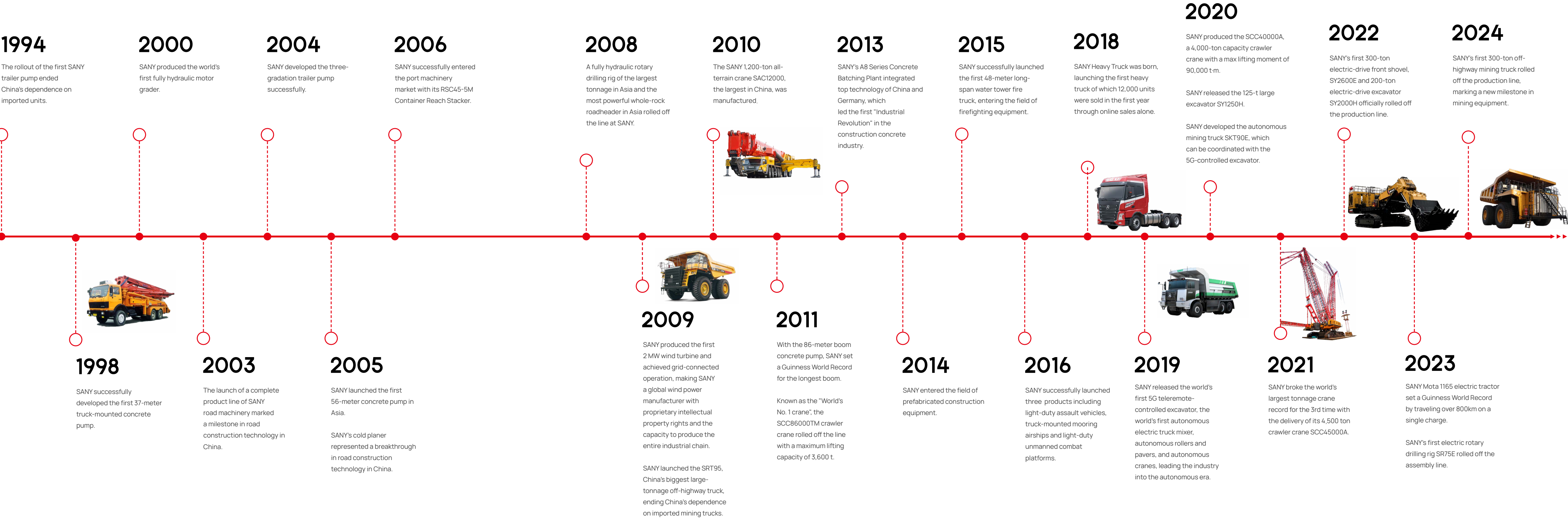
PRODUCT PORTFOLIO



SANY

QUALITY CHANGES THE WORLD

Product
Milestones

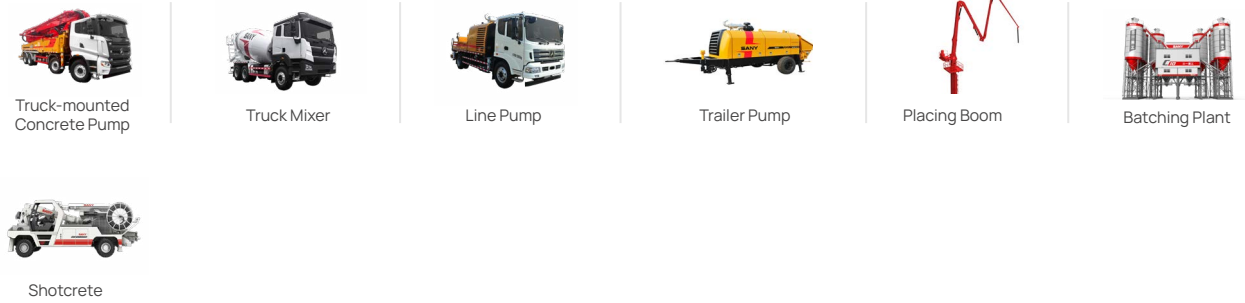


CONCRETE MACHINERY



SANY is the world's largest manufacturer of concrete machinery including concrete pumps, trailer pumps, line pumps, truck mixers, batching plants, and more. The sales and manufacturing volume of concrete pumps have been ranked No. 1 in the world. The sales volume of concrete batching plants has been ranked No. 1 globally for 11 consecutive years.

SANY's market share of precast concrete equipment remains the largest in China. With more than 20 years of technological innovation, SANY concrete machinery continually sets new Guinness World Records. Over 80% of skyscrapers worldwide over 500 meters in height are pumped by SANY.



ROAD MACHINERY



SANY Road Machinery provides complete equipment and a series of solutions for road construction with sales covering over 130 countries and regions. The market share of fully hydraulic rollers, asphalt batching plants, and pavers ranks No. 1 in China. With 3 R&D bases and 4 local factories worldwide, SANY Road Machinery is striving to provide smarter and greener products.



Motor Grader



Roller



Paver



Milling Machine



Asphalt Batching Plant

EXCAVATOR



SANY has developed hydraulic excavators with a product range from 1.6t to 400t. Besides the crawler excavators, SANY also manufactures a full series of earthmoving machinery including wheeled excavators, long-reach excavators, forestry excavators, demolition machines, as well as electric machines covering electric excavators.



Mini Excavator



Small Excavator



Medium Excavator



Large Excavator



Wheeled Excavator



Long-reach Excavator









Electric Excavator

LOADER



SANY Loader, with meticulous engineering, offers a wide range of loading equipment for diverse applications. The portfolio includes wheel loaders, backhoe loaders, skid steer loaders, and aerial work platforms, all designed for high efficiency and intelligent operation.




SANY Loader is dedicated to sustainable development and lead in introducing electric-powered options to ensure both environmental friendliness and outstanding performance.

- 
Backhoe Loader
- 
Skid Steer Loader
- 
Wheeled Loader
- 
Electric Wheeled Loader
- 
Articulating Boom Lift
- 
Scissor Lift
- 
Telescopic Boom Lift

PILING MACHINERY



One out of every three rotary drilling rigs in China is manufactured by SANY. SANY has set the record for the deepest offshore drilling with its 149-m rotary drilling rigs, and has successfully met the need for large-scale and ultra-deep pile foundation construction that the Chinese rotary drilling equipment industry lacks. Selling to over 60 countries and regions, SANY's piling machinery accounts for 60% of the export market share with the number of overseas equipment exceeding 2,500 units.

- 
Rotary Drilling Rig
- 
Hydraulic Grab
- 
Trench Cutter

HOISTING MACHINERY



SANY Crane specializes in the development and manufacturing of high-end cranes ranging from 8 to 4,500 tons, including truck cranes, all-terrain cranes, rough terrain cranes, truck-mounted cranes, industrial cranes, lattice boom crawler cranes, telescoping boom crawler cranes and tower cranes, as well

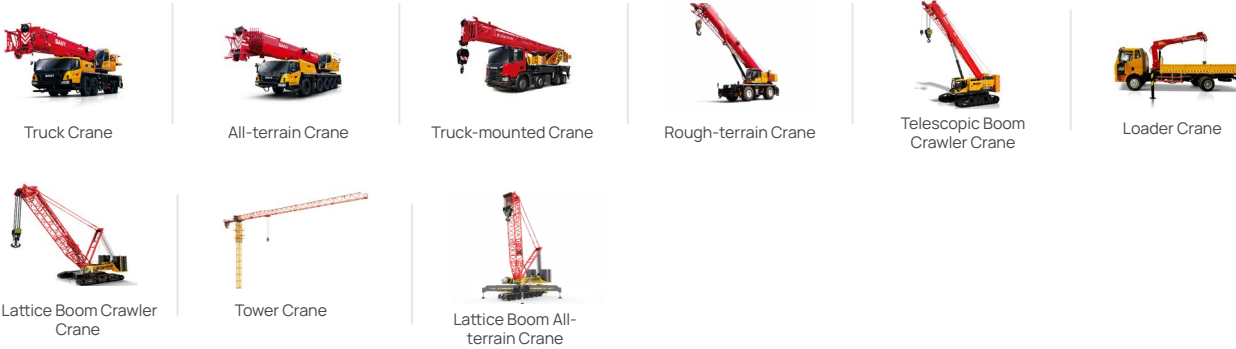
as electric machines, such as electric cranes and mobile energy storage. In 2024, the world's first 9-axle 4,000t all-terrain crane SAC40000T rolled off the assembly line and was successfully delivered.

DUMP TRUCK



SANY started the international dump truck business in 2018, and the global sales volume reached 3,681 units in 2024, which is the fastest growth rate in the industry. As the pioneer and practitioner of new energy dump trucks SANY is committed to building the world's leading brand of new energy dump trucks and providing customized and scenario-

based full cycle solutions with three major product platforms - standard load, composite, and heavy-duty and four major technological routes -pure electricity, hybrid, hydrogen, and diesel. In 2024, the sales revenue reached 251 million USD, ranking No. 1 in the Chinese new energy dump truck market.



SEMI-TRAILER TRACTOR



SANY Truck is a pioneer of Digital and Low-carbon transformation in SANY Group. In 2018, the first batch of 500 units sold out in 53 seconds, leading the way in the internet sales of industrial products and earning the title of "Internet Truck First Brand." In 2020, SANY Truck ranked sixth in the semi-trailer tractor industry. In 2021, SANY Truck took the lead in transforming and fully invested in the development of pure electric and hydrogen fuel cell heavy trucks, reshaping the industry with new energy

solutions. In 2023, the SANY Mota 1165 pure electric heavy truck set the Guinness World Record for the "longest distance on a single charge" at 817.5 kilometers, demonstrating leading global technology. After years of development, the SANY New Energy Truck has been the domestic sales champion for four consecutive years, earning the title of "Domestic New Energy Heavy Truck Number One Brand." With a valuation of 14 billion RMB, it was included in the Hurun Global Unicorn List, ranking 504th.



Semi-trailer Tractor Hydrogen Semi-trailer Tractor Electric Semi-trailer Tractor

MINING TRUCK



SANY has four major series of mining trucks with load capacities from 40t to 300t. In 2020, the 60t pure electric off-highway mining truck SKT90E was launched, which was successfully applied to the harsh working conditions at an altitude of 5,000 meters. In 2021, the 100t SKT105S was off the production line, filling the gap of large-tonnage wide-body vehicles in China. Currently, SANY has fuel, hybrid, pure electric, and autonomous mining trucks selling worldwide. In 2023, SANY started to

partner with Rosebel Gold Mines, a subsidiary of Zijin Mining and has delivered batches of SET150S electric drive trucks to Suriname, marking a significant milestone in the mining history. In July 2024, SANY successfully produced the SET320S diesel electric power off-highway mining truck, which has a maximum load capacity of 300 tons and is currently the largest load capacity hybrid mining car developed by SANY.



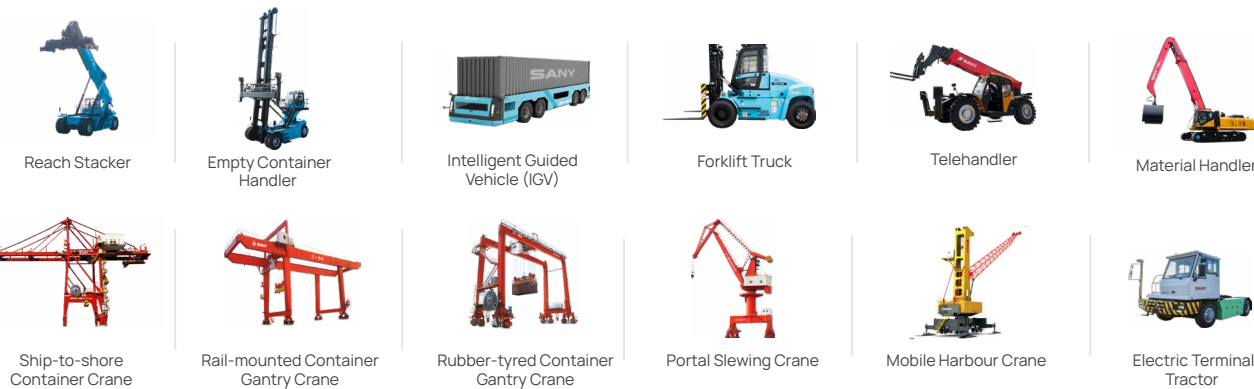
Diesel Electric Mining Truck Rigid Mining Truck Off-highway Mining Truck Electric Off-highway Mining Articulated Dump Truck

PORT MACHINERY

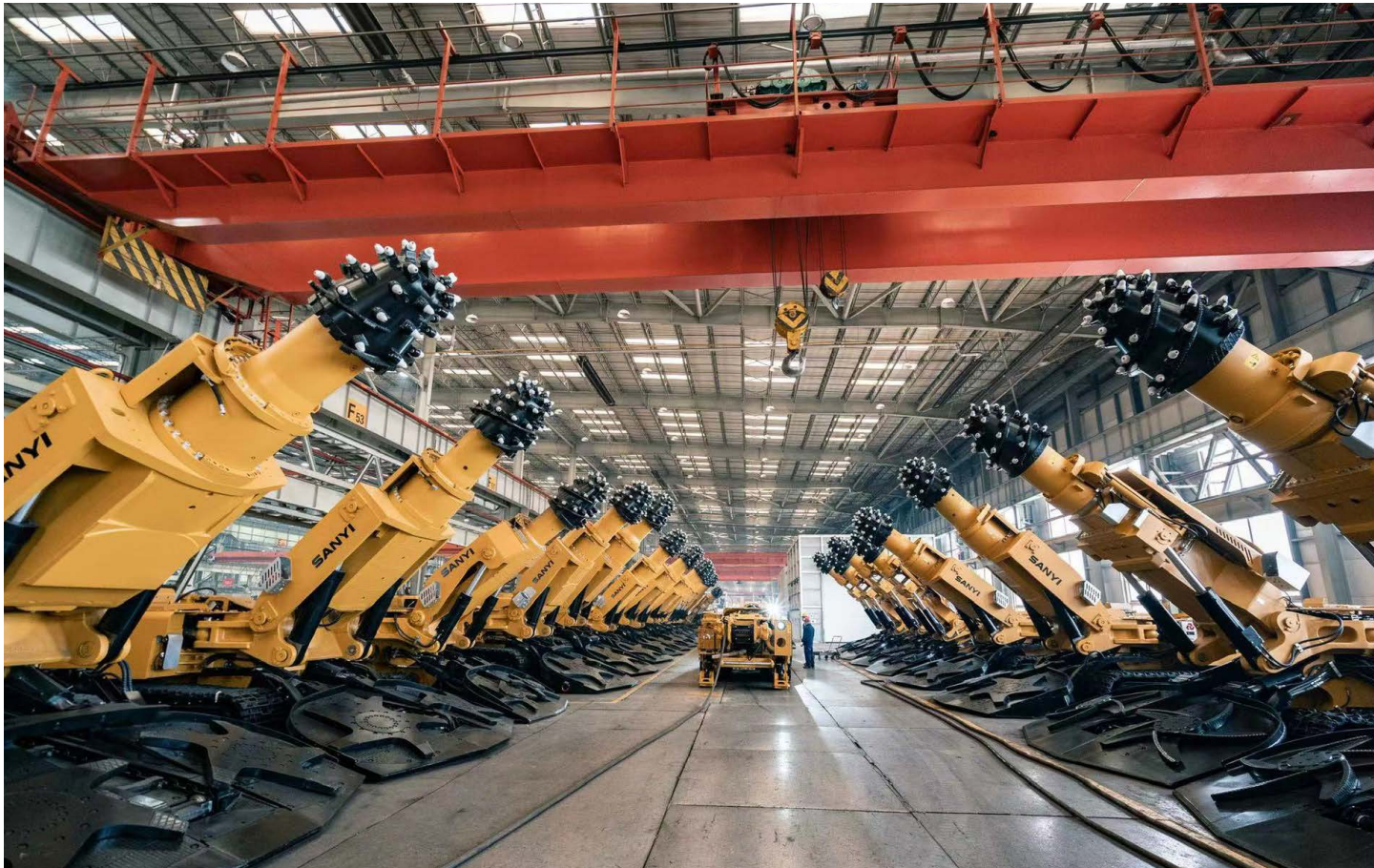


SANY Marine specializes in mobile port machinery (reach stackers, empty container handlers), port cranes (STS, RTG, RMG, jib cranes, MHC, ship unloaders, ship loaders), logistics equipment (material handlers, heavy-duty forklift trucks, electric terminal tractors), and telehandlers. Among these, mobile port machinery holds a global market share of 35%,

maintaining a leading position in the industry. SANY's port crane is technologically advanced and widely used at major global ports such as PSA, APMT, HPH, Ningbo-Zhoushan Port, Guangzhou Port, Yantian Port, China Merchants Port, and COSCO Shipping Ports.



COAL MACHINERY



The first SANY roadheader was off the production line in 2004. Now SANY roadheaders range from 132 kW to 630 kW in total power. SANY's market share in China for mining machinery has exceeded 60% (with hard rock tunnel boring machines over 80%) and has ranked No. 1 for 15 consecutive years. In 2020, SANY's first intelligent roadheader EBZ160i and EBZ260i made its debut.



WAREHOUSE & LOGISTICS FORKLIFT TRUCK



SANY Robotics Technology Co., Ltd. was established during a critical period of SANY Group's intelligent and digital transformation. Inheriting SANY Group's business philosophy that prioritizes "R&D, manufacturing, and service" as core

competencies, the company integrates advanced technologies such as 5G, Industrial Internet, and AI to develop two major business segments: intelligent forklifts and comprehensive logistics solutions.

FIRE-FIGHTING EQUIPMENT



SANY has developed more than 60 products, which include 3 series: aerials, firefighting, and rescue. SANY Firefighting Equipment has developed into China's leading firefighting brand, with its long-span Water Tower Fire Truck holding a 50% market share.



2-5T CB Forklift Truck



1.5/2T Electric Pallet Truck



1.5/2T Stand-on Electric Pallet Truck



Large-span Water Tower Fire Truck



Demolition Fire Truck



Large Tank Water Tower



Elevating Platform Fire Truck



Multifunctional Foam Fire Truck

SANITATION MACHINERY



SANY Environmental, a rising force in SANY Group, focuses on electrifying, smartening, and connecting sanitation equipment. It pioneers modern, intelligent sanitation management, integrating municipal and urban-

rural services to lead China's environmental solutions. Its product lineup spans new energy and fuel-powered sweepers, collection trucks, transfer trucks, and transfer stations.



Road Sweeper



Sprinkler



Compression Garbage Truck



Sweeper Truck



Chassis



Transfer Station

TO INDUSTRIALIZE CONSTRUCTION

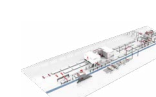


SANY Construction, established in 2016 as a subsidiary of SANY Group, is dedicated to providing "Technology · Equipment · Cloud Platform" for Intelligent Construction. Building on SANY's strengths as one of the "Big Three in Construction Machinery" and its industrial IoT capabilities, SANY Construction focuses on prefabricated concrete buildings.

Through extensive research, rigorous validation, and hands-on project implementation, the SANY Prefabricated Construction System (SPCS 365) was developed. SANY Construction aims to make large-scale construction safer, more cost-effective, low-carbon, intelligent, high-quality, faster to build, and resource-efficient.



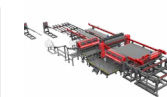
SPCS Structural Technology



Prefabricated Component Production Line



Autoclaved Aerated Concrete Production Line



Rebar Equipment



Special Transport Vehicles for Prefabricated Members



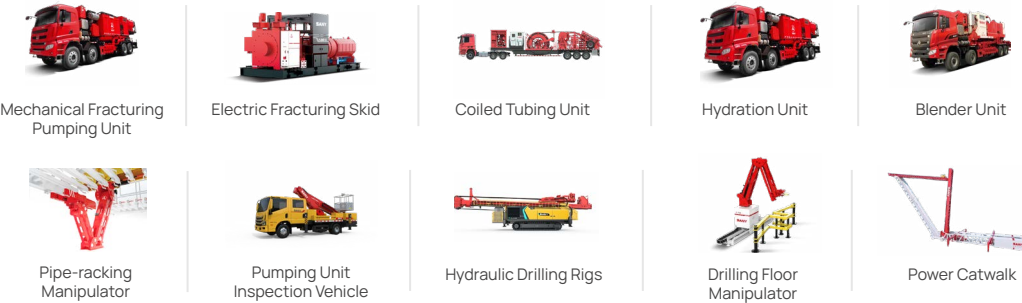
Crushing and Recycling Equipment

ENERGY EQUIPMENT

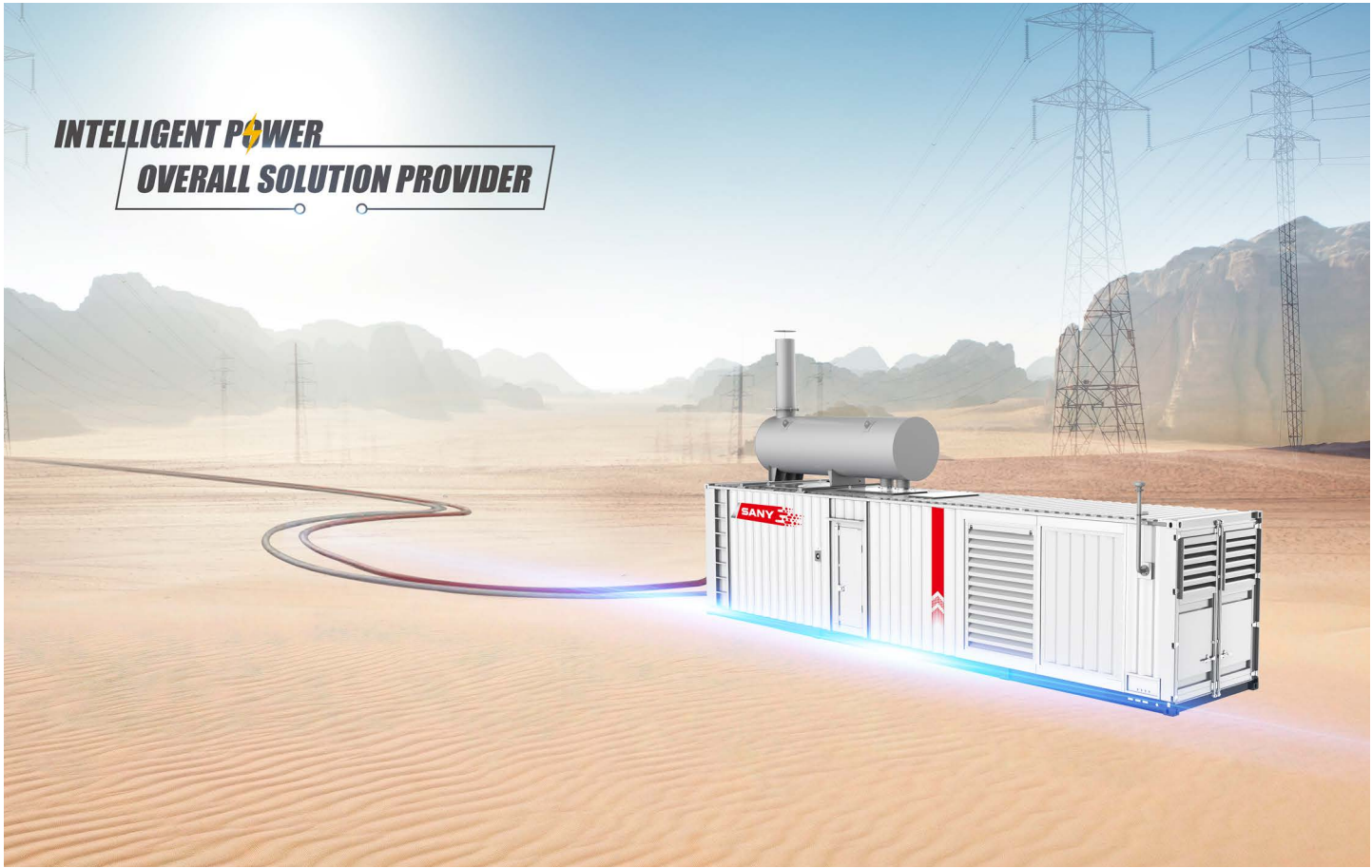


Established in 2013, SANY Energy is a specialized company engaged in the R&D and manufacturing of complete oil and gas field equipment sets, EPC contracting, and oilfield technical services. It is dedicated to providing customers with safe, efficient, intelligent, and eco-friendly complete sets of petroleum equipment, comprehensive solutions, and integrated services. The company currently possesses the industry's most comprehensive series of complete fracturing

equipment sets (mechanical, hydraulic, electric drive), sand mixing equipment, blending equipment, instrumentation, coiled tubing equipment, cementing equipment, sand transport equipment, frequency conversion and power distribution equipment, drilling and workover automation equipment, high-pressure manifold products, and large-scale integrated fracturing unit network control, with its own core technologies and products.



GENSET



SANY Genset covers 3 categories of products: diesel genset, gas genset and methanol genset, including open type, container type, silent box type, trailer type, vehicle-mounted type and so on.

The power range of the company's genset products covers 15 -3190kW, and the frequency of the genset is 50Hz, 60Hz, and so on. The output voltage of the generator sets ranges from DC48- 65V, AC108V- 13800V and so on.





WIND TURBINE

SANY has developed comprehensive wind energy solutions including digital top-level design, intelligent production and manufacturing, complete integration system, core components manufacturing, wind farm designing, EPC, and wind farm operation and maintenance. In January 2025, Windpower Monthly, the leading global publication covering the wind industry, revealed the list of “Turbine of the Year 2024”, in which

SANY R.E.'s SI-270150 wind turbine was awarded the Gold Medal in the 'Onshore Turbines 5.91MW-plus' category. This marks the second consecutive year that SANY has won the Gold Award for its onshore large MW turbine models, following the success of the SI-230100 model in 2023.



5.X MW-6.X MW
Platform WTGS



7.X MW-8.X MW
Platform WTGS



8.X MW-11.X MW
Platform WTGS



12.X MW-16.X MW
Platform WTGS

PHOTOVOLTAIC POWER STATION



SANY Silicon Energy specializes in the full-process independent R&D and production of ingots, wafers, cells, modules, and PV power stations. SANY Silicon Energy has successfully developed and implemented GW-scale PV power station projects, demonstrating remarkable strength

in the fields of Green Mining, Green Transportation, Green Manufacturing, and Eco-industrial Parks. It achieves intelligent and refined management throughout the entire value chain, from design and construction to operation and maintenance.



Photovoltaic Module



N-TOPCon Photovoltaic Cell



Mini-sized Mobile PV Storage Equipment



Smart Microgrid Solution for Various Scenarios

HYDROGEN ENERGY



SANY specializes in the development and manufacturing of hydrogen production and refueling equipment, as well as its core components, and is committed to becoming the world's leading provider of total solutions for hydrogen equipment. 2023, SANY launched a GW-class hydrogen production solution and the world's largest single hydrogen production

electrolyzer. The new S-series square electrolyzer can produce 3,000 Nm³/h of hydrogen using renewable energy. In the future, SANY Hydrogen will continue to increase its R&D investment to empower the global green energy transition and make greater contributions to the popularization and application of clean energy.



200Nm³/h PEM Electrolyzer



1000Nm³/h Pressurized Alkaline Electrolyzer



200Nm³/h Skid-mounted Hydrogen Equipment



1000Nm³/h Modular Alkaline Equipment

ENERGY STORAGE



SANY is devoted to the research and development, manufacturing and sales of Power Battery PACK, BESS (Battery Energy Storage System) Container, BESS Tower, BESS Truck, Battery-Swapping Station and BESS Station Operation. It has the ability to invest, design, build and operate Battery-

Swapping Station and BESS Stations, and provides overall solutions. In 2024, SANY launched three new products, BESS Tower (Configure Series PCS), BESS Truck (AC690 or AC380 and DC outputs) and the New Generation BESS Container.



BESS Tower



BESS Container



BESS Truck



Linlong Battery Swapping Station

PUTZMEISTER



The Putzmeister Group develops and produces machinery of high technological quality in the fields of concrete conveying, truck-mounted concrete pumps, stationary concrete pumps, placing booms and accessories, plant technology, conveying viscous industrial materials through pipes, concrete spraying and transport in tunnels and underground, mortar machines, plastering machines, screed conveying, injection

and specialist applications. Market segments include the construction industry, mining and tunneling, large industrial projects, power plants and sewage treatment plants, as well as waste incineration plants, all over the world. The company is based in Aichtal. With around 4,000 employees, the company generated sales of around 1 billion euros in the 2023 financial year.



Concrete



Truck Mixer



Tunneling & Mining

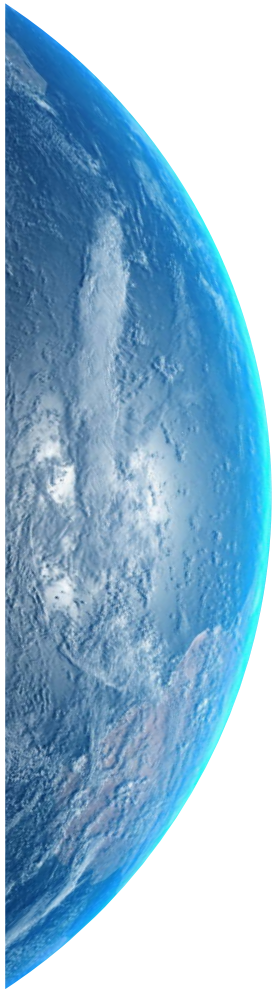
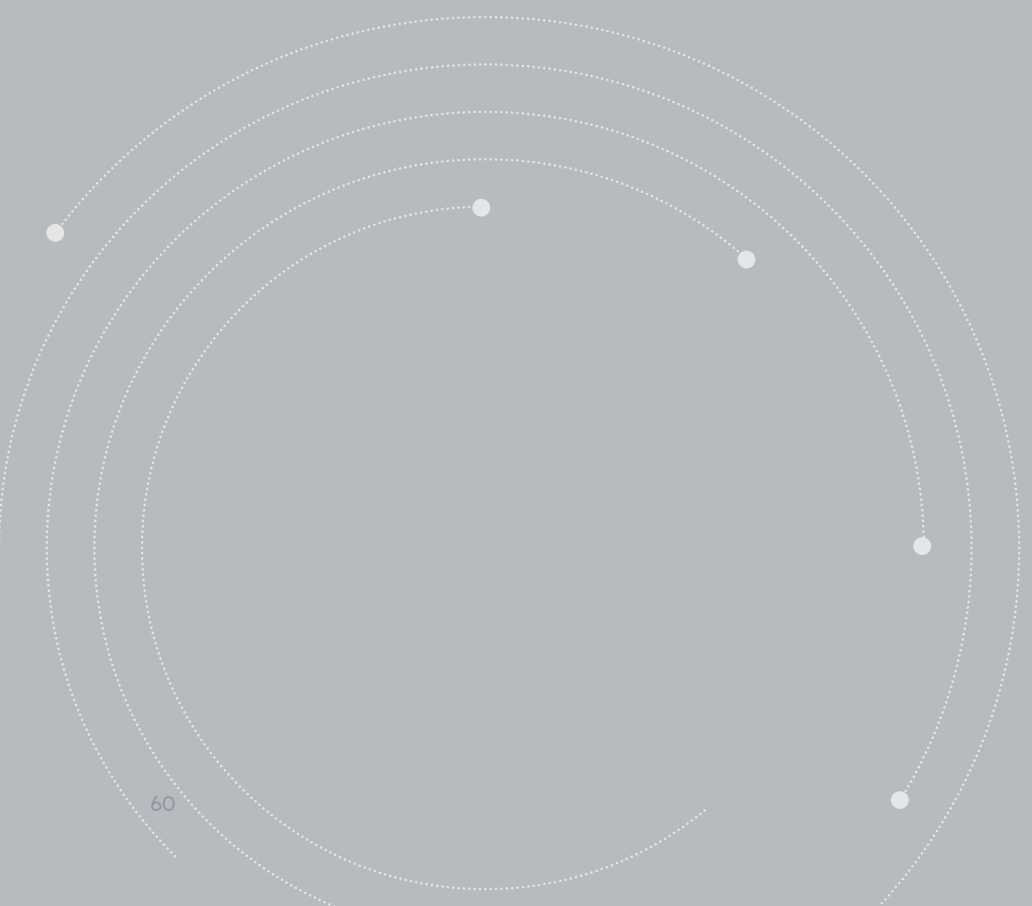


Mortar



Industrial

GLOBAL SUPPORT SYSTEM



SANXY



SERVICE & PARTS

With an obsessive attitude, exhaust every possible means to elevate the service to an unparalleled level. At SANY, we deliver unmatched service to ensure every piece of equipment operates at peak performance, maximizing uptime, efficiency, and value for our customers worldwide.



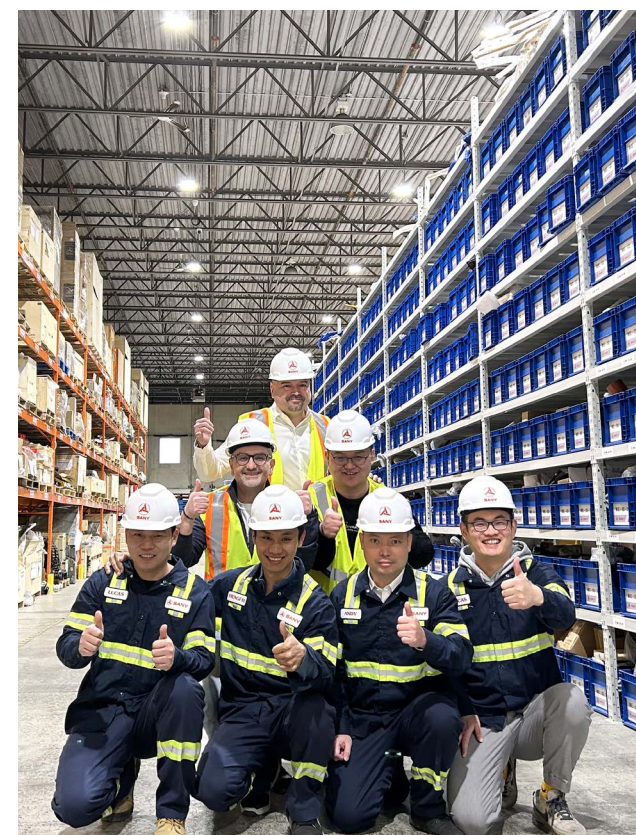
Global Service Support

- 900+ service centers outside China with over 3,500 service engineers ready to assist enable our customer to find us in the shortest path.
- With a 24/7 year-round global call center, our service teams promise quick response, fast arrival, swift problem-solving.
- The Annual Global Service Tour dispatches local service engineers to visit customers and inspect sold machines.



Expert Training System

- State-of-the-art training centers in China, Indonesia, and France with over 180 industry-leading trainers develop highly skilled local service engineers.
- Through a comprehensive system of 298 structured courses, from basics to advanced technical skills, service engineers are systematically developed to meet diverse service demands.



Smart & Reliable Parts Supply

- 7 central warehouses, 47 country hubs, 185 self-owned warehouses, 673 dealer stock points safeguard the parts supply capability and delivery efficiency.
- Real-time online tracking of parts inquiries, orders and deliveries ensure transparency, efficiency, and timely support throughout the service process.



CONSTRUCTION CASES



SANY



QUALITY CHANGES THE WORLD

ASIA



Three Gorges Dam, China



Landmark 81, Vietnam



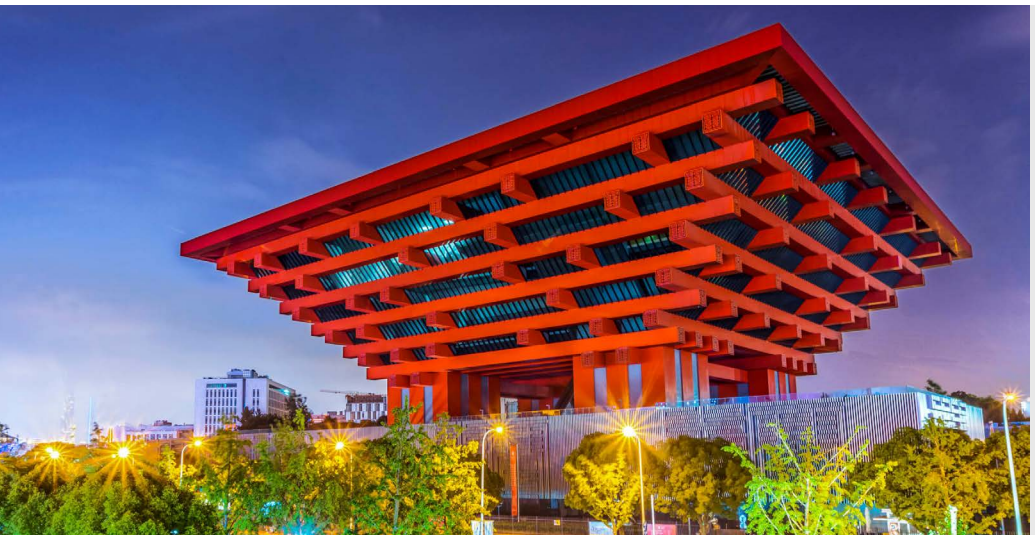
Hong Kong-Zhuhai-Macao Bridge



Burj Khalifa Tower, UAE



Shanghai Center, China



China Pavilion at Expo 2020, China



Beijing Daxing International Airport, China



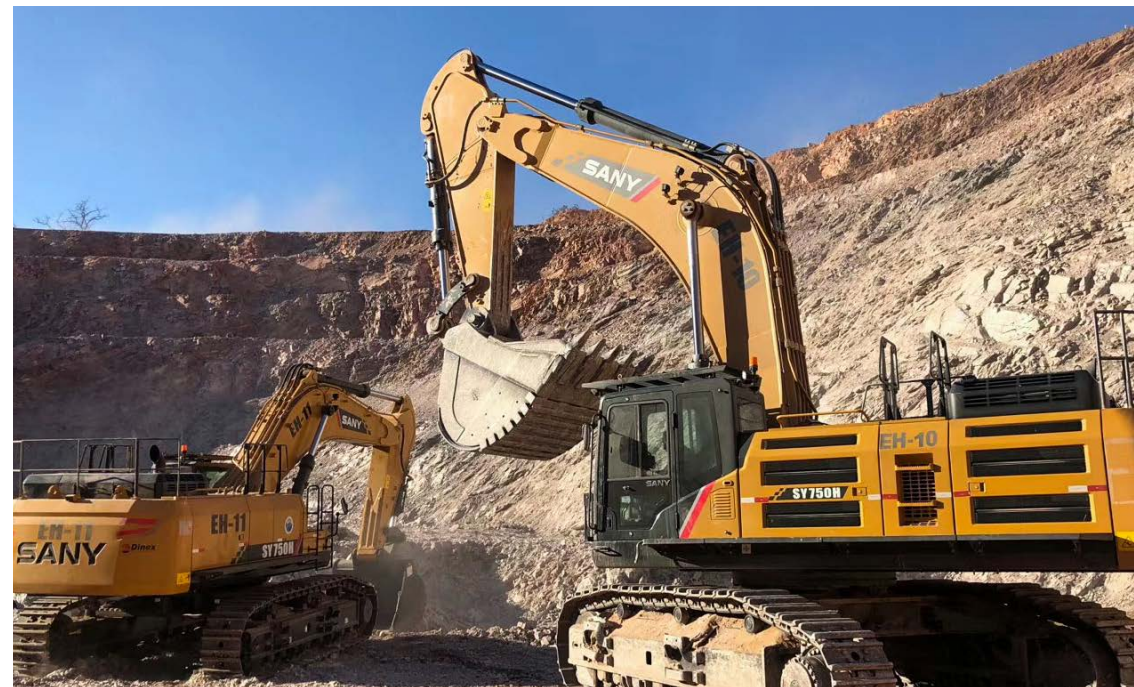
Beijing National Stadium, China



Yangshan Port, China



AMERICA



Mato Grosso, Brazil



Rio Olympics Sites, Brazil

EUROPE



2009 World University Games Project, Serbia and Montenegro



Pelješac Bridge, Croatia



Istanbul Airport, Turkey



Budapest-Belgrade Railway, Hungary and Serbia

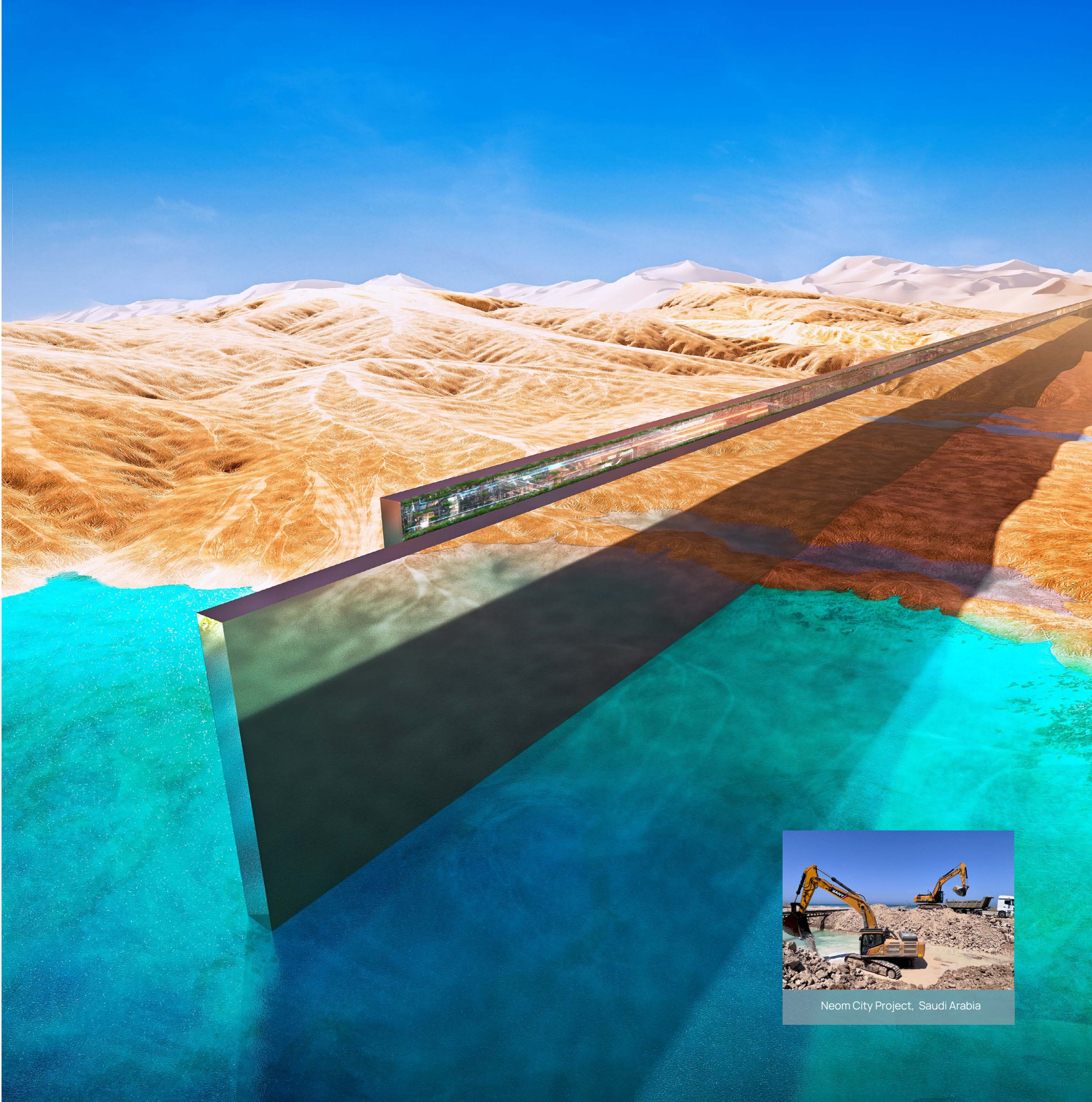


1915 Çanakkale Bridge, Turkey

MIDDLE EAST



The Avenues Park, Bahrain



Neom City Project, Saudi Arabia



Al Janoub Stadium, Qatar

AFRICA



East-West Highway, Algeria



Green Point Stadium, South Africa



Mombasa-Nairobi Railway, Kenya



Adama Wind Farm II, Ethiopia

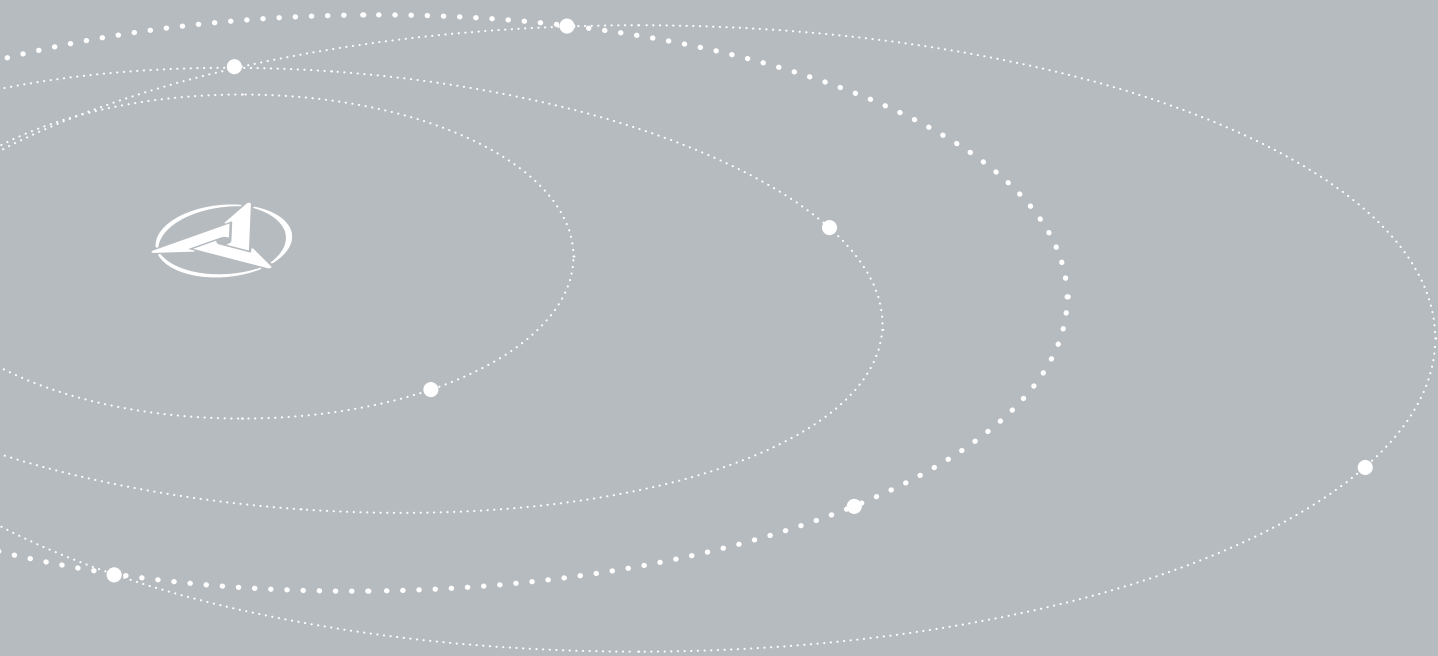


Merowe Dam, Sudan



Dangote Refinery, Nigeria

SOCIAL RESPONSIBILITY



SANXY

Ongoing Aid Efforts in Times of Crisis

In February 2023, when a major earthquake struck Turkey, SANY swiftly dispatched a 12-person team with around 30 units of machines to the worst-hit region to aid in the earthquake response. In September, a 6.9-magnitude earthquake struck Morocco, resulting in 2,946 fatalities and leaving 5,674 injured. SANY, together with the Morocco dealer "Forges de Bazas" donated seven pieces of equipment to clear the path after the country was hit by the earthquake. The path, a lifeline from the Amizmiz to the affected area, is used to transport medicine, food, and other supplies.

To enhance rescue efficiency, SANY established a technical rescue team, exploring a man-machine-connected rescue approach. Simultaneously, SANY collaborated with local governments to provide professional machinery rescue training for grassroots rescue teams.





Nurturing Rural Education

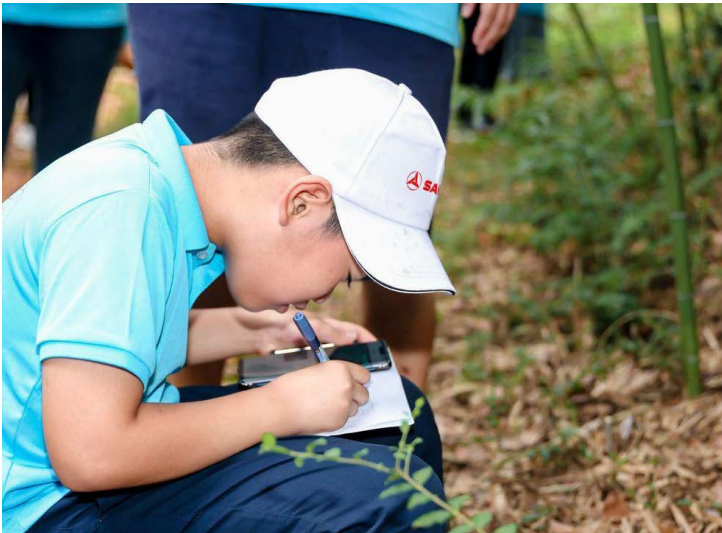
Since 2007, with a donation of \$12 million to local education, SANY has established a SANY School in Lianyuan and provided subsidies to over ten thousand senior high school students to realize their dreams. In the realm of early childhood education, SANY initiated kindergartens in each village to narrow the educational gap.

With improvements in basic education, SANY has shifted its focus to educational innovation based on local context. In 2022, SANY launched the "Dig and Dig Tinker Education" project, leveraging its construction machinery expertise to provide intellectual development programs for rural children. The project has expanded to over 300 pilot zones nationwide, benefiting more than 22,000 children and allowing them to experience the joy of learning through play.

Caring Next Generation

Committed to improving children's daily lives, SANY Thailand, SANY Financing Thailand, and local partner Maxcrane donated 100,000 THB and essential supplies to a Baan Nokkamin Foundation orphanage on May 16, 2024. Shortly after, on May 25, SANY South Africa launched a social donation campaign at Nyeletis Children's Home in Johannesburg.

In December 2024, SANY Italia donated U.G.I. ODV (Unione Genitori Italiani), an association dedicated to supporting children and adolescents affected by oncohematological diseases. The contribution helped renovate the rehabilitation gym at the UGICARE center, enhancing the facility for young patients in need.





Money Raising for People in Need

On July 16, 2024, SANY sponsored the annual charity soccer match "LA PARTITA del Cuore," organized by Italy's national television network, RAI. This event brought together renowned figures from various fields in Italy to raise funds for medical research, children's welfare, and public benefit. All funds from sponsorships and donations will be donated directly to the Bambino Gesù Hospital in Rome.

The Dream Project of SANY Foundation

In rural areas, SANY Foundation helps talented students get the education they deserve. In 2014, SANY Foundation initiated the Dream Project with an annual investment of 400,000 USD to help students from underprivileged families acquire an equal chance of receiving good education and chasing after a better future.





Donation of Medical Supplies Across the World

During the worldwide outbreak of COVID-19 in 2020, SANY donated over 300 million medical masks to over 30 countries, including Italy, France, Germany, Japan, Austria, and Sweden, and others for fighting against the pandemic.

A German proverb was written on the box of the masks that SANY donated to Germany: "Mountains and valleys don't come together, but humans do." The quote means "Our destiny is closely connected in both good and hard times."

2020 Race Against the Pandemic

In January 2020, with the outbreak of the COVID-19 pandemic in China, SANY rushed to assist in the construction of Fire God Mountain hospital and Thunder God Mountain hospital in Wuhan. SANY promptly delivered 41 cranes, 8 concrete pumps, 22 excavators and over 40 service engineers to the site. They completed the construction project in 4 days, which originally would have taken 2 months, ensuring the delivery of the two hospitals in record time and making contributions to the fight against the pandemic.



SUSTAINABILITY



SANNY



Sustainability at SANY

SANY contributes to the society by both providing quality products and fulfilling its corporate social responsibility, which is centered on achieving sustainable development of the industry, society and individuals.

Sustainability Strategy

We are at a critical moment in human history, where every one of us, by making choices today, can decide what the world we live in will be like tomorrow. As a responsible, visionary and aspiring global enterprise, SANY supports the UN 2030 Agenda for Sustainable Development. In decision making, we focus on global trends and challenges, international norms of responsible business behavior, and stakeholders' expectations.

Sustainability Framework

Carbon Neutrality

Under the background of a low-carbon future featuring a carbon emissions peak and carbon neutrality, SANY is now leading the wave of electrification in responding to the call for an electrical era that is widely echoed across the industry.

- In 2024, SANY Heavy Industry invested 72.33 million USD in environmental protection.
- The clean energy usage totaling 76.072 million kWh, with a clean energy usage ratio of 13.8%. Energy consumption in non-production areas ↓ 13% YoY.
- Energy-saving and consumption-reduction projects carried out during operations saved approximately 4.507 million USD in energy costs.

Renewable Energy

SANY Renewable Energy explores the low-carbon development of the manufacturing industry through developing intelligent renewable-energy products covering wind power, photovoltaic power, hydrogen energy, and energy storage.

2024, SANY Heavy Industry obtained 70 patents in clean technology, with revenue from low-carbon products reaching 560 million USD.

People

The Beijing SANY Foundation (SANY Foundation), initiated by SANY Group, was established on December 31, 2013 in the Beijing Municipal Civil Affairs Bureau. SANY Foundation holds the mission to promote "science and public welfare", by empowering the public good to fully realize its value, thus bringing real change to the world and building a vibrant, caring and trusting society.

Providing local employment is not only a key aspect of corporate social responsibility, but also a core practice in advancing sustainable development. By the end of 2024, SANY's localization rate of employees outside China reaches 89%, providing jobs for over 9,000 people.



