

SANY[®]

SPECIFICATION

BETTER WORLD, BETTER SANY CRANE



STC800C5

SANY TRUCK CRANE



80 t



48.5 m



66 m

■ www.sanyglobal.com

QUALITY CHANGES THE WORLD

The parameters, pictures and standard/optional equipment are only for reference in this brochure, the actual machine is based on the effective price list and contract.

V1.0

QUALITY CHANGES THE WORLD

SANY CRANE is one of the core business units in SANY Group, specializing in the development and manufacturing of high-end wheeled cranes, crawler cranes and tower cranes.

三一集团旗下核心事业部，从事高端轮式起重机、履带起重机、塔式起重机系列产品的研发制造。

BETTER WORLD, BETTER SANY CRANE

SANY CRANE

QUALITY CHANGES THE WORLD

► CONTENTS

目录

Highlights

整机亮点

► 04

Overall Dimensions

整机尺寸

► 08

Technical Specification

整机参数

► 09

Counterweight Combinations

配重组合图

► 11

Transport Solution

运输方案

► 11

Crane Introduction

整机介绍

► 12

Working Conditions

工况组合

► 14

Excellent Load Capacity

性能卓越

48.5m full-extension 5-section large U-shape profile boom, 17.5m jib, max. lifting height 66m and max. lifting moment 2352kN.m.

5节臂，大截面U型主臂，主臂全长48.5m，副臂全长17.5m，最大起吊高度66m，最大起重力矩可达2352kN.m。

Strong Bearing Chassis

高承载能力底盘

Brand new 2.8m wide chassis, high-strength rectangular crosssection frame, improving torsion and bending resistance.

DF Cummins high quality engine, 9-speed FAST transmission, FANGSHENG heavy-duty double-reduction axle, the max. gradeability of 48%, fuel consumption 34L per 100 km.

325 large-size steel wire tires, ground clearance > 330mm with good accessibility.

Equipped with 400L large volume fuel reservoir, endurance > 1000km.

高承载2.8m宽体底盘，高强矩形截面车架，吊载抗弯、抗扭能力强。

东康Z10高品质发动机，法士特9档变速器，方盛高承载双减桥。

最大爬坡度48%，百公里综合油耗34L。

325高承载钢丝胎，离地间隙 > 330mm，通过性好。

配置400L大容积燃油箱，续航大于1000km。

STC800C5
SANY TRUCK CRANE

Double Pump Intelligent Flow Distribution System

双泵智能流量分配系统

Adopt stable and high quality oil pump, motor and motor, the min. winch single rope speed is less than 1.5m/min, the min. stable slewing speed is less than $0.1^{\circ}/s$, easy to realize mm-level high precision operation.

New double pump intelligent flow distribution system, independent luffing, confluent telescoping, combined motion stability increased by more than 50%.

The electro-hydraulic control system can save 15% energy and also improve the efficiency of heavy load operation by 30%.

采用稳定、高品质的油泵、马达，卷扬单绳最低速度小于1.5m/min，回转最低稳定小于 $0.1^{\circ}/s$ ，轻松实现毫米级吊装。

全新开发双泵智能流量分配系统，变幅独立，伸臂合流，复合动作平稳性提升50%以上。

电液复合系统使上车吊载综合节能15%，重载作业效率提升30%。



New Generation Cab Capacious, Convenient and Comfortable

搭载全新两室 操作便捷、宽敞舒适



Full LCD instrument, equipped with anti-glare adjustment, able to weaken blue light effect.
Center control 12.1" multimedia entertainment screen, which can be connected with smart phone.
The seat with air suspension.

全液晶仪表，夜光不同场景设计，防眩目调校，弱化蓝光伤害。
中控 12.1 寸多媒体娱乐屏。
气浮座椅。

iCab

i-Cab - Driver's cab 新两室- 下车

Multi-function seat with air suspension, making driving more comfortable.

Double seats and foldable berth for the co-driver.

12.1-inch liquid crystal screen integrated with back-up image and multi-media.

Electric rearview mirror with electric heating, ensuring good field of view in foul weather.

Adjustable high-brightness halogen bulb/fog lamps, providing clear vision at night.

Reversing sensor with accurate distance detection capability, fully covering the parking area without blind spots, and effectively avoiding scratch and collision.

Electric HVAC, able to adjust indoor temperature as demanded.

主驾驶位配备气浮座椅，驾驶更舒适。

副驾驶位设置双座椅可折叠式卧铺。

12.1 寸液晶触摸大显示屏，集成倒车影像、影音娱乐功能。

电动、电加热后视镜，不惧恶劣冰雪天气。

高度可调节卤素大灯 / 雾灯，提供夜间清晰视野。

倒车雷达，探头后方无死角，精准探距，防碰撞。

电动冷暖空调，根据需求调整室内温度。



STC800C5 SANY TRUCK CRANE



iCab

i-Cab - Operator's cab 新两室 - 上车

Seat widened by 450mm, and leg room increased by 30%.

Optional cab tiltable by 0-20°, relieving cervical fatigue during large-angle and long-boom operations.

Adjustable seat with maximum inclination of 140°, allowing the operator to lie flat and rest after work.

座椅、腿部活动空间较上一代增加 30%。

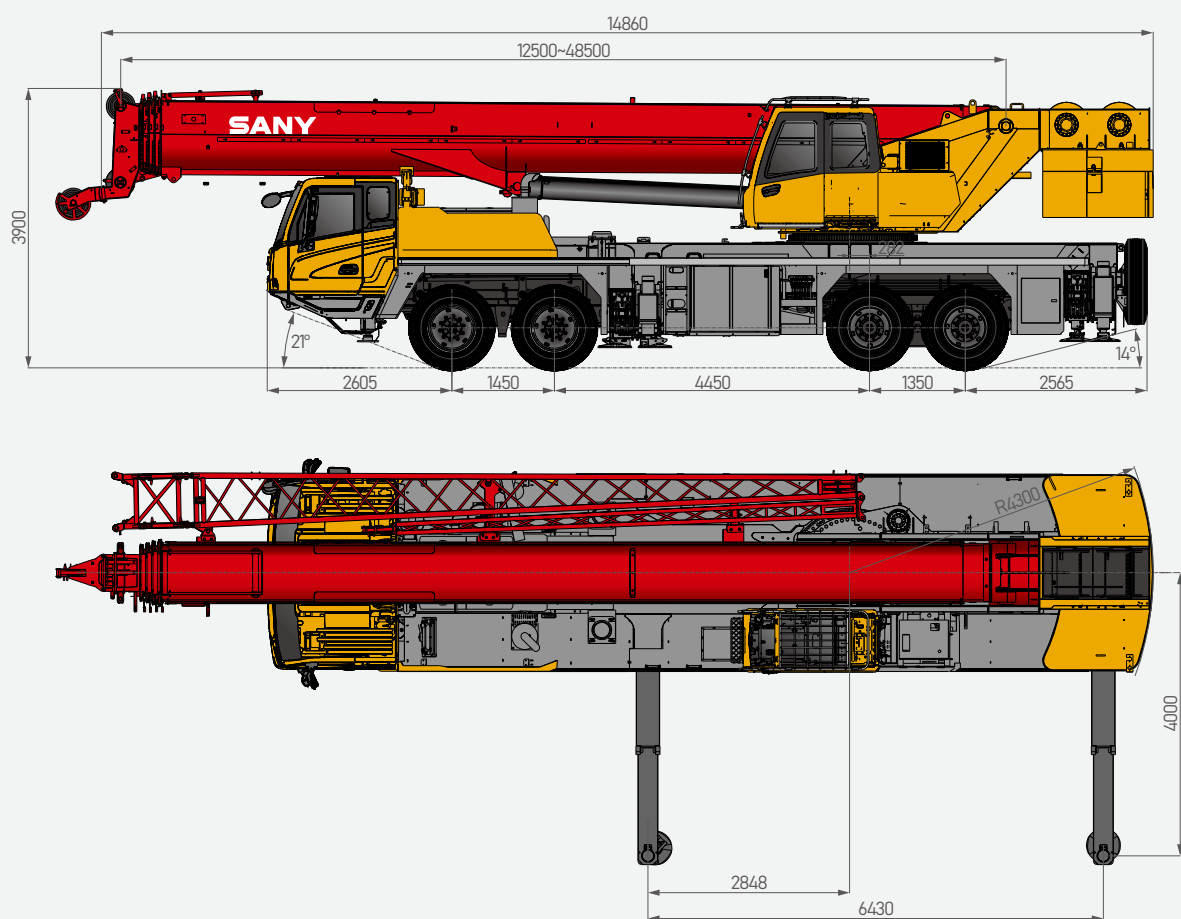
操纵室可实现 0~20° 上仰变位，大角度、长臂段作业可减缓颈椎疲劳。

可调式座椅，最大后仰 140°，操作手可以平躺休息。



Overall Dimensions

整机尺寸



Technical Specification

整机参数

CATEGORY类型	ITEM项目	UNIT单位	VALUE参数	
CAPACITY 额定起重量	Max. lifting capacity 最大起重量	t	80	
WEIGHT 重量参数	Gross weight 整机总质量	t	44	
POWER (CHASSIS) 发动机参数(下车)	Engine model 发动机型号(排放标准)	-	Z10E360 31 (EU Stage III)	
	Max. engine power 发动机最大功率	kW/rpm	264/1900	
	Max. engine torque 发动机最大输出扭矩	N-m/rpm	1600/900~1350	
POWER (SUPERSTRUCTURE) 发动机参数(上车)	Engine model 发动机型号(排放标准)	-	-	
	Max. engine power 发动机最大功率	kW/rpm	-	
	Max. engine torque 发动机最大输出扭矩	N-m/rpm	-	
DIMENSIONS 尺寸参数	Overall length 整机全长	mm	14860	
	Overall width 整机全宽	mm	2800	
	Overall height 整机全高	mm	3900	
TRAVEL 行驶参数	Max. travel speed 最高行驶速度	km/h	90	
	Steering radius 转弯半径	Min.steering radius 最小转弯半径	m	12
		Min.steering radius of boom tip 臂头最小转弯半径	m	15
	Wheel formula 车轮模式	-	8×4×4	
	Min.ground clearance 最小离地间隙	mm	330	
	Approach angle 接近角	°	21	
	Departure angle 离去角	°	14	
	Max. gradeability 最大爬坡度	-	48%	
	Fuel consumption per 100km 每100公里油耗	L	34	
MAIN PERFORMANCE 主要性能参数	Working temperature range 使用温度区间		℃	-25~+45
	Min.rated lifting radius 最小额定幅度		m	3
	Tail slewing radius 转台尾部回转半径		m	4.3
	Boom sections (Qty.) 臂节数		-	5
	Boom shape 臂形状		-	U shape U型
	Max.lifting moment 最大起重力矩	Basic boom 基本臂	kN-m	2352
		Full-extension boom 全伸主臂	kN-m	1577.8
		Full-extension boom + jib 全伸主臂+副臂	kN-m	578.6
	Boom length 臂长	Basic boom 基本臂	m	12.5
		Full-extension boom 全伸主臂	m	48.5
		Full-extension boom + jib 全伸主臂+副臂	m	66
	Max.lifting height 最大起重高度	Basic boom 基本臂	m	13
		Full-extension boom 全伸主臂	m	49
		Full-extension boom + jib 全伸主臂+副臂	m	66
	Outrigger span (Longitudinal×Transverse) 支腿跨距(纵×横)		m	8×6.43
Jib offset 副臂安装角度		°	0, 15, 30	
AIRCONDITIONER 空调	In operator's cab 上车空调	-	Cooling 制冷	
	In driver's cab 下车空调	-	Heating & cooling 制冷、制热	

Technical Specification

整机参数



Axle Load 轴荷

Axle 轴	1	2	3	4	Gross weight 总重量	Speed limitation 限速(km/h)
Axle load 轴荷 /t	9.6	9.6	12.4	12.4	44	90

Remark: Traveling with Jib, Spare tyre, main hook on the middle of the frame and auxiliary hook in the container, with counterweight 3t.
备注：主钩置于车架中部，副钩置于钩筒，带备胎，3t配重。

Axle 轴	1	2	3	4	Gross weight 总重量	Speed limitation 限速(km/h)
Axle load 轴荷 /t	8.7	8.7	16.3	16.3	50	40

Remark: Traveling with Jib, Spare tyre, main and auxiliary hook in the front of the cab with counterweight=9t (rear3t + rear 6t).
备注：主副钩前置，带副臂及备胎，9t配重。



Hook 吊钩

Rated load 额载 /t	Number of sheaves 滑轮数量	Rope rate 倍率	Hook weight/kg 吊钩重量
6 ●	0	1	120
55 ●	5	10	480
80 ○	7	14	700

● Standard 标配 ○ Optional 选配

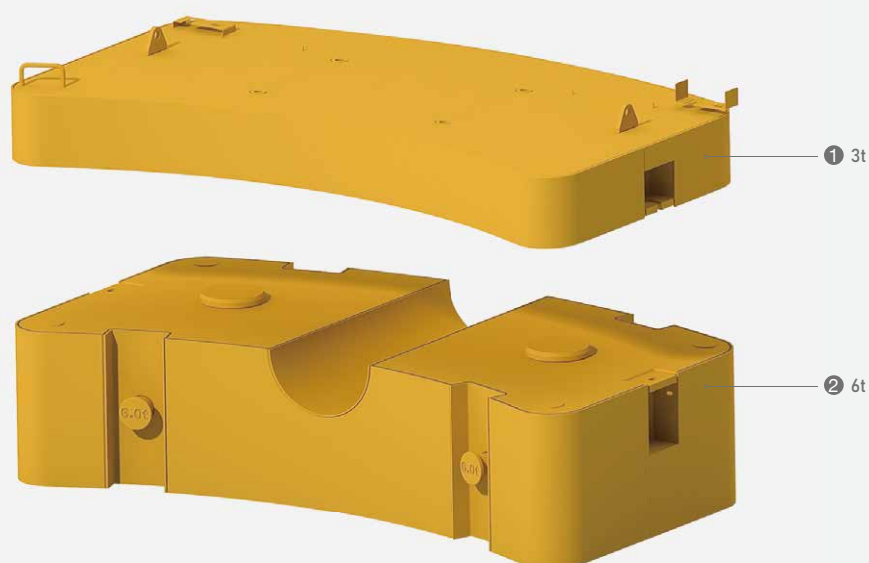


Operations 主要动作参数

Item 项目	Max.single rope lifting speed (empty load) 单绳速度 (空载)	Rope diameter/length 钢丝绳直径 / 长度	Max. single line pull 最大单绳拉力
Main winch 主卷扬	135m/min	Φ 18mm/240m	5.84t
Auxiliary winch 副卷扬	135m/min	Φ 18mm/145m	5.84t
Slewing speed 回转速度	1.8r/min		
Full luffing up/down time of boom 主臂起落幅时间	65s/90s		
Full extension/retraction time of boom 主臂伸缩时间	100s/120s		
Outrigger jack 垂直支腿	Extension 伸	35s	
	Retraction 缩	25s	
Outrigger beam 水平支腿	Extension 伸	35s	
	Retraction 缩	30s	

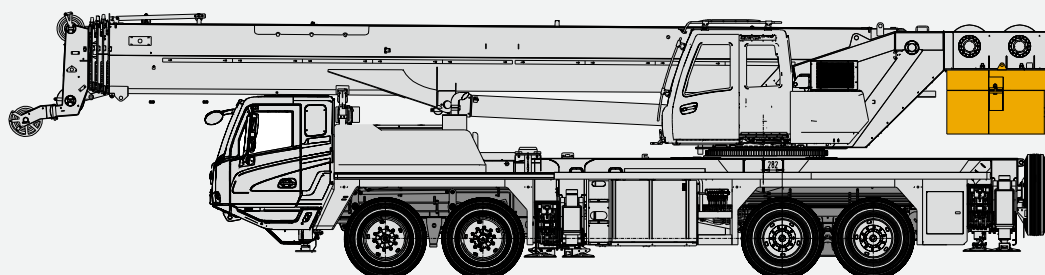
Counterweight Combinations

配重组合



Transport Solution

运输方案



≡ 9t (3t+6t)

Crane Introduction

整机介绍

Carrier 下车



Driver's cab 驾驶室

- Self-developed full width cab in ergonomic design, featuring vibration and external noise isolation.
- Equipped with pneumatic suspension seats with headrest, three-point safety belt, adjustable steering wheel, large rear-view mirror, defroster, HVAC, and full set of instrument and controls, realizing safety and comfort.
- 自主开发全宽钢整体式钢结构驾驶室，采用人体工程学原理设计，减震性和封闭性优良。
- 配备气动悬置的驾驶室与副驾驶室、三点安全带、可调整式的转向盘、大视野后视镜、配有头枕的舒适驾驶椅、防雾扇、冷暖空调等，控制仪器和仪表齐全。更加舒适、安全、人性化。



Carrier frame 车架

- Designed and manufactured by Sany, the box-type structure is expanded in height and length, with its rigidity increased by 10%, featuring increased bearing capacity.
- 三一设计、制造，采用矩形截面结构，车架加高加宽，相较槽型车架，刚性提升10%，承载能力得到大幅提升。



Chassis engine 底盘发动机

- Model: DF Cummins inline six-cylinder diesel engine with watercooler and inter cooler.
- Emission standard: Euro III.
- Fuel reservoir capacity: 400L.
- 型式：东康，直列六缸、水冷却、增压中冷、柴油发动机。
- 排放标准：欧三。
- 燃料箱有效容积：400L。



Transmission 变速箱

- 9-speed manual transmission with synchronizer, large speed ratio range, adaptable to slope climbing and high-speed traveling.
- 手动带同步器变速箱，9档，速比范围大，既可满足低速场地爬坡行驶，又可满足高速行驶。



Transmission shaft 传动轴

- Optimized layout, higher torque output via contrate gear connecting transmission shaft cardan.
- 优化的传动轴布置，传动轴传动平稳、可靠。最优化力传输，采用端面齿联结传动轴，传递扭矩大。



Axle 车桥

- Axles 1, 2 are steered; axles 3, 4 are drive axles with built-in differential lock, realizing tougher ability to rough-terrain travelling. Two-stage reducer gear and more compact axle bags contribute to better trafficability.
- 3、4轴为驱动轴，1、2轴为转向轴，驱动轴内置轴间和轮间差速器锁，使车辆有更强的脱困能力；双级减速，桥包体积更小，使车辆有更好的通过性；冲焊桥壳工艺，承载能力更强。



Suspension system 悬挂系统

- Front suspension is realized by independent leaf spring, and rear rubber. The leaf spring is verified by 100,000 cycling fatigue tests to ensure strength and ride comfort.
- 前轴采用独立式钢板弹簧，中后轴采用橡胶悬架系统；板簧经过超过10万次的疲劳试验，同时优化板簧的性能参数，保证强度的同时兼顾乘坐的舒适性。



Steering 转向系统

- The 1st and 2nd axles feature mechanical steering with hydro booster. It uses a high-flow steering gear and steering assist cylinder, which significantly reduces steering resistance, making it both easy and safe to steer.
- 1轴+2轴采用液压助力机械转向，采用大流量转向器+转向助力油缸，大大减小转向阻力，转向轻便又安全。



Tires 轮胎

- 325/95R24 popular choice for heavy-duty trucks.
- 子午线轮胎，325/95R24，广泛适用于重型汽车，通用性强。



Wheel formula 车轮模式

- 8×4×4.



Outrigger 支腿

- H-type layout, four point support with fine-grain high strength steel plate, easy to operate, outrigger beam hydraulically telescoping, jack telescoping protected by two-way holding valve.
- H型支腿4点支撑，易操作、稳定性强；采用细晶粒高强度钢板材料，一、二级支腿全液压横向伸缩。垂直油缸采用双向液压锁进行安全保护。



Brake 制动系统

- Service brake: air servo, double circuit split, wedge brake and double air chambers functioning on front axles.
- Parking brake: functioning at axles 3 and 4 by spring in air chamber.
- Emergency brake: performed by pressure reservoir
- Assisting brake: exhaust brake, safety assured when driving down long slopes.
- 行车制动采用双回路制动系统，所有车轮均用空气伺服制动器，前桥采用模式制动器+双气室，制动能力更强。
- 驻车制动是通过气室内弹簧作用在第三、四桥上。
- 应急制动阀由蓄能器储能断气制动兼做应急制动。
- 辅助制动为排气制动，保证在下长坡时的制动安全，保证行车的安全可靠。



Electrical system 电气系统

- 2*12V maintenance-free battery with a mechanical power switch, the overall power can be cut off manually. CAN instrument, data integration between superstructure and chassis.
- 2×12V 免维护蓄电池，配有机械式电源总开关，可手动切断整车电源；总线控制系统，可实现上下车信息交互。

Crane Introduction

整机介绍



Operator's cab 操纵室

- It adopts pressed and welded construction, equipped with safety glass, sun shade, outward opening door, joystick mounted on the control box in line with the principle of man-machine engineering. Corrosion-resistant FRP reinforced structure, fully covered softened interior, panoramic skylight, operator seat back tiltable and other use-friendly design, making it comfortable and easy to operate. Touch screen of adjustable angle realizes multi-screen & multi-angle monitoring to ensure working safety and the one-click operation. The main control console is combined with the operation display system for convenient man-machine interaction. Cab 20° tiltable, designed for easy observation of load at heights. Cooling A/C available.
- 采用冲压成型的全焊接结构，装有安全玻璃，车窗装有遮阳帘，外开式车门，操纵杆安装在操纵箱上，符合人机工程原理；防腐玻璃钢强化复合结构、全覆盖软化内饰、全景式天窗、操作手座椅靠背可倾斜定位等人性化设计，操作舒适、轻松；触摸式显示屏，视角可调节、多画面、多角度监控保证作业安全，满足一键式操作；主、塔臂及超起卷扬配备监视器，重点区域集中监视；主控台与操作显示系统有机结合，人机交互方便快捷；操纵室可向上倾斜20°，满足高处的作业观察需要；配备单冷空调。



Boom & telescoping system 伸缩系统

- Five sections of U shape cross section welded by high strength structural steel. Telescoping is realized by two cylinders with rope arranger.
- 48.5m boom, 17.5m jib for max. height 66m.
- 五节臂，全伸臂长48.5m，副臂17.5m，带副臂最大起升高度66m。由高强度焊接结构钢制成，U形截面，双缸绳排。



Hoist 起升机构

- Efficient and energy saving speed regulation is realized by double variables of pump and motor. Winch balance valve coupled with exclusive anti-slip tech contribute to smoother hoisting.
- Normally closed type winch brake and winch balance valve are set to prevent hook falling and stalling. Standard 6.0t, 55t hook.
- The main winch adopts electric proportional variable motor with good inching performance and stationarity, and can realize infinitely variable speed, main wire rope with 18mm diameter and 240m length, auxiliary wire rope with 28mm diameter and 145m length.
- 泵、马达双变量调速，高效节能。卷扬平衡阀与独特的防滑钩技术完美结合，重物起落平稳；
- 常闭式卷扬制动器，并设置卷扬平衡阀，可防止落钩失速；标配6.0t、55t吊钩。
- 主卷扬采用电比例变量马达，卷扬微动性、平稳性好，能实现无级变速。主、副卷扬钢丝绳直径均为18mm，长度分别为240m，145m。



Luffing system 变幅系统

- Passive luffing down. Adopting single cylinder and front hinge, it saves more effort in luffing and improves the situation of load of boom, and also uses electric proportional control balance valve. Luffing angle: -0.6°~80°.
- 自重落幅，更加节能。采用单根油缸，前铰支布置，变幅更省力且起重臂受力得到改善；采用电比例控制平衡阀。变幅角度：-0.6°~80°。



Slewing 回转系统

- Integrated slewing buffer valve with free slewing function. Smooth slewing start & control with excellent inching performance.
- 带集成回转缓冲阀，具有自由滑转功能，回转启动和控制平稳，微动性好。



Counterweight 配重

- Movable counterweight features 2 combinations: 3/9 See variable CW combination chart. CW assembly and disassembly controlled by remote device.
- 组合式可变平衡重。3/9共2种组合方式，详见附件组合表，可满足不同工况的需求，最大限度发挥结构性能，可遥控拆卸及安装，微动性好。



Hydraulics 液压系统

- The all new smart double pump flow system lifts maneuverability of combined motions by 50%. The boom can luff at shunting mode and telescope at confluence mode.
- Load sensing variable piston pump can control flow in high precision, reducing energy loss significantly.
- Electrically controlled main valve functions flow compensation and load sensing control, securing stable control over single and combined motions.
- Electronically controlled variable motor for winch is of highly efficiency, stability and low noise. Max single rope lifting speed 135m/min.
- 采用全新开发双泵智能流量系统，变幅独立，伸臂合流，复合动作操控性提升50%以上。
- 采用负载敏感变量柱塞泵，能实时调节油泵排量，实现高精度的流量控制，极大的降低能量损耗。
- 电控主阀具备流量补偿、负载反馈控制功能，能在各种工况下，轻松实现单个动作和组合动作的稳定控制。
- 卷扬采用电控变量马达，高速效率高，低速稳定噪音小；主副卷扬单绳最大速度达135m/min。



Control system 控制系统

- Vehicle data display system: equipped with multiple sensors to give timely feedback of data information, achieving real-time monitoring of the vehicle working state.
- Man-machine interaction interface: more user-friendly interface with rich and clear information. Customers can set the vehicle controllability according to their personal operation habits and different operating conditions to fully meet the preferred needs of customers.
- 整车数据显示系统：配置丰富的传感器件，及时反馈数据信息，实现实时监控，确保随时掌控整车工作状态。
- 人机交互界面：人机交互界面设计人性化，信息丰富而清晰，客户可根据个人操作习惯和不同使用条件自行设置整车操控性，充分满足客户的个性化需求。



Safety equipment 安全装置

- Load moment indicator: A method of analytical mechanics is adopted and a moment limiter calculation system based on the hoisting mechanics model is established. Through online empty-load calibration, the rated hoisting accuracy can reach $\pm 3\%$ to fully protect the hoisting operation.
- The hydraulic system is equipped with balance valve, relief valve, two-way holding valve, etc. to realize stability and reliability.
- Boom head and jib head are equipped with A2B switch to prevent the wire rope from over winding.
- The length & angle sensor and pressure sensor are equipped to display the operating status of the crane in real time, automatically cut off dangerous actions, and give a buzzer alarm.
- 采用分析方法，建立了基于吊重力学模型的力矩限制器计算系统，通过在线空载标定，吊重精度达到 $\pm 3\%$ 。
- 液压系统配置液压平衡阀、溢流阀、双向液压锁等元件，实现液压系统稳定可靠。
- 主、副臂臂端配置高度限位器，防止钢丝绳过卷。
- 配置长度角度传感器、压力传感器，实时显示起重作业状态，自动切断危险动作，蜂鸣报警。



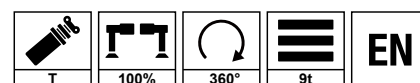
Optional equipment at extra fees 选配

- 80t hook.
- Outtrigger pads.
- Special painting.
- Other equipment available upon request.
- 80t吊钩。
- 支腿垫板。
- 特殊涂装。
- 其他配置视需求定。









The diagram illustrates the operational range of a truck-mounted crane. The x-axis represents the 'Work radius' in meters, ranging from 0 to 54. The y-axis represents the 'Lifting height' in meters, ranging from 2 to 70. The crane is shown at the bottom left, with its boom extended upwards. The boom is divided into sections labeled with their lengths: J 17.5m, J 10.2m, T 48.5m, T 41.8m, T 35.0m, T 28.3m, T 21.5m, T 17.0m, and T 12.5m. The boom is shown at two different angles: 15° and 30°. The diagram includes several curves representing the reach and height capabilities for different boom configurations. Data points on these curves indicate specific reach and height values. For example, at a 15° angle, the reach ranges from approximately 2.4m to 42.5m, and the height ranges from approximately 0.5m to 68.5m. At a 30° angle, the reach ranges from approximately 2.4m to 42.5m, and the height ranges from approximately 0.5m to 68.5m.

Load Chart - Telescopic Boom (T)

性能表 - 主臂



Unit: t

	12.5	19.25	26	32.75	39.5	47	54.75	62.5	70.25	78	85.75	93.5	101.25	109	116.75	124.5	
3	80*					60											3
3.5	61	32.5				57.5						46					3.5
4	55	32.5				54	32.5					46					4
4.5	53	32.5	31.5			52	32.5					46					4.5
5	48	32.5	31.5			47.5	32.5					44.5	31.5				5
6	38.9	32.5	31.5	23.8		38.7	32.5	30.5				37.8	31.5				6
7	32.6	32.5	30	23		32.4	31.8	29	21			31.6	31	27			7
8	27.8	27.7	26.5	20.7	16.4	27.7	27.1	26	20.8			27	26.4	25.5	19.8		8
9	24.1	24	22.9	19	16	24	23.5	22.5	20.5	15.3		23.4	22.8	22	19		9
10		21	20	17.5	15.2	19.8	20.6	19.7	18.9	15.2		19.4	20	19.2	18.5	12.5	10
11		18.6	17.7	16.5	14.3	16.4	17.8	17.4	16.7	14.8		16	17.3	16.9	16.8	12.3	11
12		15.9	15.7	15.5	13.6	13.8	15.2	15.5	14.8	13.8		13.4	14.6	15	14.9	12	12
14		12.1	12.7	12.9	11.8		11.4	12.1	12.3	11.4		9.7	10.9	11.6	12	11.5	14
16		9.5	10.1	10.4	10		8.8	9.4	9.8	9.6		7.2	8.3	9	9.4	9.7	16
18			8.1	8.5	8.6		6.9	7.5	7.9	8.2		5.3	6.4	7.1	7.5	7.8	18
20			6.7	7	7.2		5.4	6.1	6.5	6.7			5	5.6	6	6.3	20
22			5.5	5.8	6			4.9	5.3	5.6			3.9	4.5	4.9	5.2	22
24				4.9	5.1			4	4.4	4.6			2.9	3.6	4	4.3	24
26				4.1	4.3			3.2	3.6	3.9				2.8	3.2	3.5	26
28				3.5	3.7				3	3.2				2.2	2.6	2.8	28
30					3.1				2.4	2.7				1.6	2	2.3	30
32					2.6				1.9	2.2					1.5	1.8	32
34					2.2					1.8					1.1	1.4	34
36										1.4					0.8	1	36
38										1.1						0.7	38
40																	40
42																	42
44																	44
	14	7	6	5	4	11	7	6	4	3	9	6	5	4	3		
	0	0	0	0	0	50	50	50	50	50	100	100	100	100	100		
	0	25	50	75	100	0	25	50	75	100	0	25	50	75	100		

Remark: "*" represents the load capacity index.





备注: "*"代表负荷能力指数。

Load Chart - Telescopic Boom + Fixed Jib (TJ)

性能表 - 主臂 + 副臂



Unit: t

	48.5m+10.2m			48.5m+17.5m			
	0°	15°	30°	0°	15°	30°	
78	5.1	4.4	3.4	2.6	2.2	1.5	78
76	5	4.2	3.3	2.6	2.1	1.5	76
74	4.9	4	3.2	2.5	2	1.4	74
72	4.8	3.9	3.1	2.5	1.9	1.4	72
70	4.6	3.8	3	2.5	1.8	1.4	70
68	3.9	3.4	2.9	2.4	1.7	1.3	68
66	3.3	2.9	2.7	2.3	1.6	1.3	66
64	2.8	2.5	2.3	2.1	1.5	1.3	64
62	2.4	2.1	2	2	1.5	1.2	62
60	2	1.8	1.7	1.7	1.4	1.2	60
58	1.7	1.6	1.5	1.4	1.3	1.2	58
56	1.5	1.3	1.3	1.2	1.1	1	56
54	1.2	1.2	1.1	1	0.9	0.9	54
52	1	1	1	0.9	0.8	0.7	52
50	0.9	0.8	0.7	0.7	0.6	0.5	50
48	0.6	0.5	0.5	0.5			48
46							46
44							44
42							42
	1	1	1	1	1	1	

Icon Description

图标说明



Max. lifting capacity
最大起重量



Max. boom length
最大主臂长



Max. lifting radius
最大吊载幅度



Max. lifting height
最大吊载高度



Driver's cab
驾驶室



Carrier frame
车架



Engine
发动机



Transmission
变速箱



Transfer case
分动箱



Axle
车桥



Outrigger
支腿



Slewing platform
转台



Crane control
操纵方式



Hoist
起升机构



Suspension system
悬挂



Steering
转向



Tires
轮胎



Wheel formula
轮胎模式



Brake
制动



Electrical system
电气系统



Hydraulic system
液压系统



Slewing mechanism
回转机构



Safety equipment
安全装置



Load moment indicator
力矩限制器



Counterweight
配重



Boom &
telescoping system
主臂



Auxiliary boom nose
臂尖滑轮



Boom extension
主臂延伸臂



Auxiliary jib
鹅头臂



CW rearward positioned
配重后移



Rear storage box
尾部储物箱



SANY GROUP CRANE BU

SANY Mobile Crane and Tower Crane Industrial Park

No.168 Jinzhou Avenue, Jinzhou Development Zone, Changsha City, Hunan Province, P.R. China Zip 410600

SANY Crawler Crane Industrial Park

No. 2188 Daishan Road, Wuxing District, Huzhou City, Zhejiang Province, P. R. China Zip 313028

Consulting sanycrane@sanygroup.com (Crane BU) / crd@sany.com.cn (IHQ)

After-sales Service 0086-400 609 8318 (Overseas)

Reminder:

Any change in the technical parameters and configuration due to product modification or upgrade may occur without prior notice.

The machine in the picture may include additional equipment. This brochure is for reference only, and goods in kind shall prevail.

Copyright at SANY. No part of this brochure may be copied or used for any purpose without written approval from SANY.

© Edited in April 2025

三一集团起重机事业部

三一轮式、塔式起重机产业园：中国湖南长沙金洲开发区金洲大道168号 邮编：410600

三一履带起重机产业园：中国浙江湖州市吴兴区黛山路2188号 邮编：313028

咨询：sanycrane@sanygroup.com(重起事业部) / crd@sany.com.cn(国际总部)

售后服务：0086-400 609 8318(海外)

温馨提示：

由于技术不断更新，技术参数及配置如有更改，恕不另行通知。图中机器可能包括附加设备，本画册仅供参考，以实物为准。

版权为三一所有，未经三一书面许可，本画册任何内容不得被复制用于任何目的。

© 2025年4月版

🌐 SANY GROUP: www.sanygroup.com | SANY USED CRANE: sanyusedcranes.en.alibaba.com

SANY CRANE |  |  YouTube @[sanycrane4878](https://www.youtube.com/sanycrane4878) |  Sany-crane |  SANYCraneGlobal

