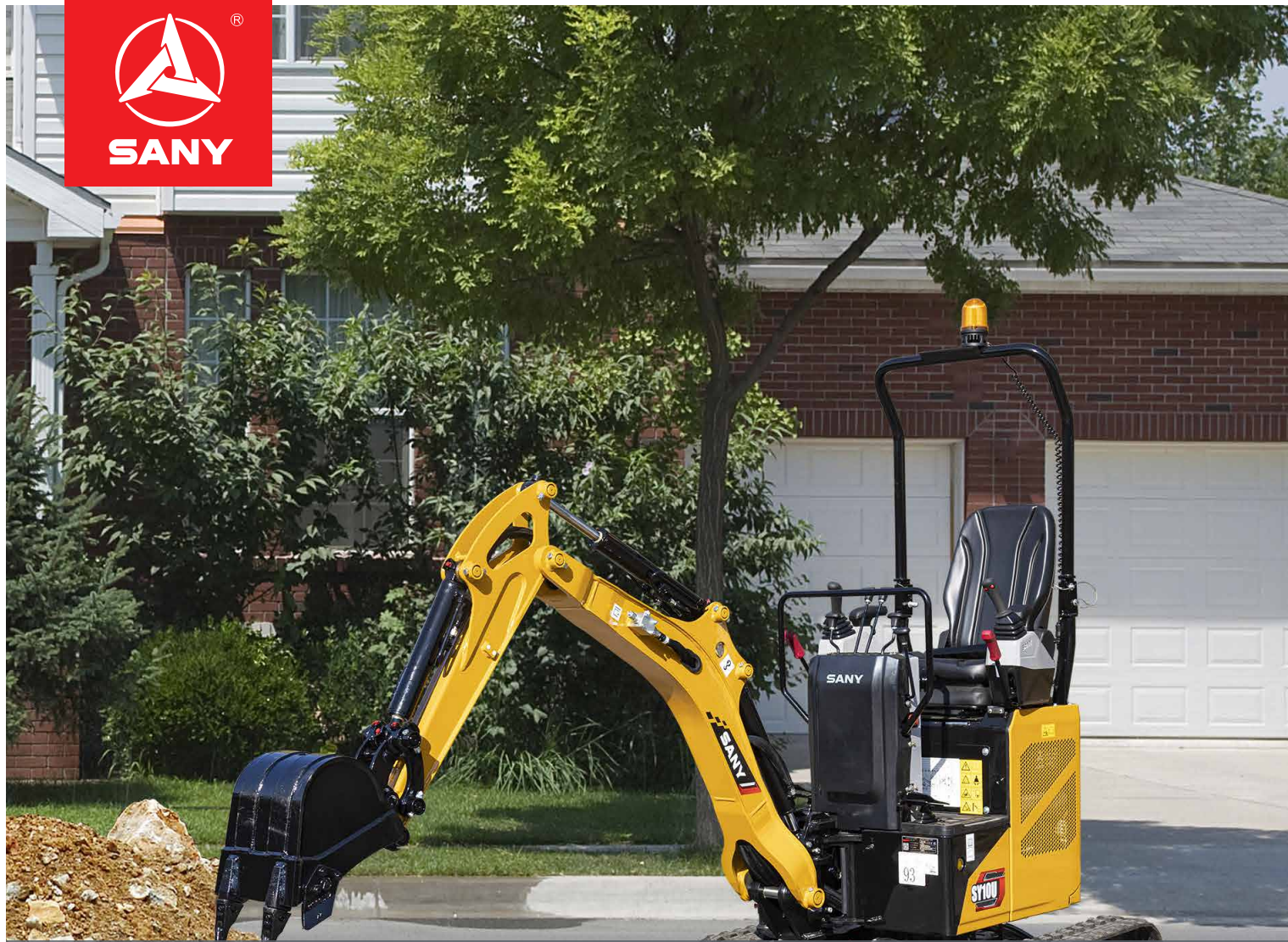




SANY



SY10U

Engine power

8.8kW/2200rpm

Bucket capacity

*0.025m³

Operating weight

1195kg

* Bucket is optional



High security



Small and Flexible



Easy Operation



Comfortable Operation

- ◆ Standard with GSP positioning password lock anti-theft display, dual pilot lock switch and door maintenance switch to ensure the double safety of machines and people.
- ◆ Super adaptability, zero tail, retraction undercarriage, swinging boom, the narrowest width is 745mm, narrow space-easy to operate in corners and other tight spaces.
- ◆ Professionally tuned full hydraulic control load sensitive hydraulic system, accurate matching of engine main pump, smooth movement coordination.
- ◆ Standard high-back seat, expandable armrest box, Blowing fan, hydraulic oil and coolant double radiator, optional mechanical suspension seat, enhance the comfort of riding and continuous driving.

Technical specifications

Specification		Main performance	
Operating weight	1195 kg	Traveling speed(high/low)	3.4/2.1 (km/h)
Bucket capacity	0.025 m ³ (optional)	Gyration speed	10rpm
Engine	Tier 4f/Stage V	Grade ability	30%
Modle	D722	Ground pressure	28.5kpa
Type	Water-cooled four-stroke diesel engine	Bucket digging force	12.9 kN
Engine power	8.8 kW/ 2200 rpm(SAEJ1995)	Arm crowd force	6.9 kN
Maximum torque	36.9 Nm/ 1900 rpm		
Displacement	0.719 L		

Machine dimensions

Overall dimensions(mm)	SY10U	Operation range (mm)	SY10U
A. Overall length(transportation)	3018	a. Maximum digging height	3037
B. Overall width(transportation/operation)	745/1100	b. Maximum unloading height	2096
C. Overall height (transportation)	2290	c. Maximum digging depth	1868
D. Upper width	745	d. Maximum digging depth with vertical boom	1614
E. Blade height	220	e. Maximum digging radius	3539
F. Width of standard track shoe	180	f. Minimum front gyration radius	1487
G. Track gauge	564/919	g. Maximum lifting height of blade	260
H. Minimum ground clearance	145	h. Maximum lowering depth of blade	212
I. Gyration radius of tail	550	i. Maximum surface excavation radius	3490
J. Grounding length of track	1041	LH/RH. Maximum bucket offset	451/335
k. Track length	1353.5		

