

SANY®

QUALITY CHANGES THE WORLD



Engine power
570 kW/1900 rpm

Bucket capacity
7 m³

Operating weight
102000 kg

SY1050H

Mining Excavator

TECHNICAL SPECIFICATION

SPECIFICATION	UNIT	VALUE
Operating weight	kg	102000
Bucket capacity	m ³	5.5-8.0
Engine	-	Stage III
Model	-	YCK16
Type	-	Vertical, in-line, water-cooled, air-to-air intercooled, common rail
Engine power	kW/rpm	570/1900
Maximum torque	N·m/rpm	3200/1400
Displacement	L	15.93

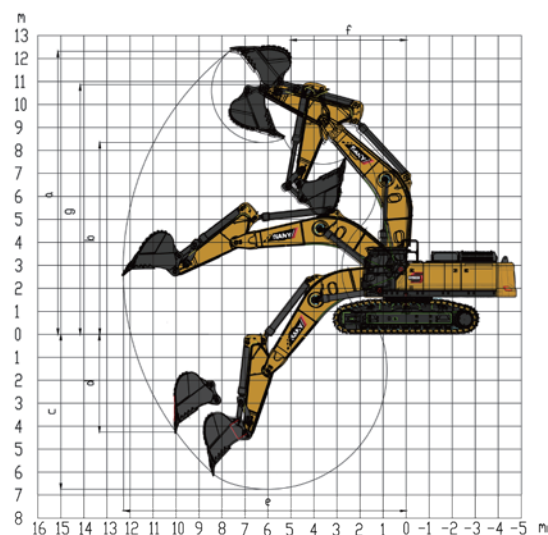
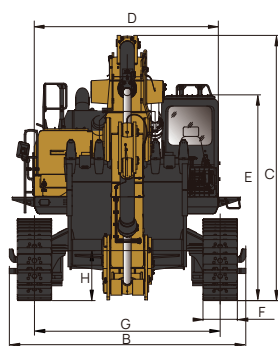
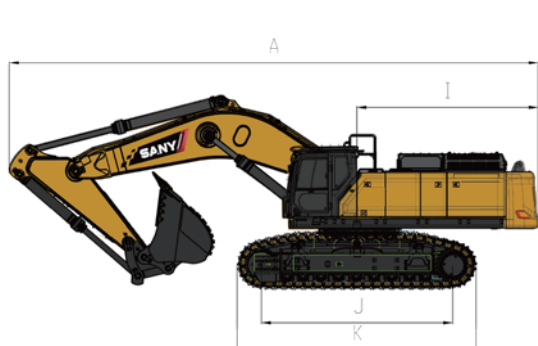
MAIN PERFORMANCE	UNIT	VALUE
Swing speed	rpm	6.5
Travel speeds	km/h	4.3/2.8
Grade ability	°	35
Ground pressure	kPa	130
Bucket digging force	kN	518
Arm crowd force	kN	487

DIMENSIONS

	UNIT	VALUE
A. Overall length	mm	13930
B. Overall width	mm	3770/4530
C. Overall height	mm	5300
D. Upper width	mm	4510/3520
E. Total height (top of cab)	mm	3860
F. Standard Track Pads	mm	650
G. Track gauge	mm	2810/3570
H. Min. ground clearance	mm	912
I. Tail swing radius	mm	4750
J. Distance between tumbler	mm	5070
k. Track length	mm	6350

WORKING RANGE

	UNIT	VALUE
a. Max.digging height	mm	12420
b. Max.dumping height	mm	8000
c. Max.digging depth	mm	7062
d. Max.vertical wall digging depth	mm	4520
e. Max.digging reach	mm	12557
f. Min.swing radius	mm	4847
g. Max. height at min.Swing radius	mm	10580



Reminder:

Any change in the technical parameters and configuration due to product modification or upgrade may occur without prior notice. The machine in the picture may include additional equipment. This flyer is for reference only, and goods in kind shall prevail. Copyright at SANY. No part of this brochure may be copied or used for any purpose without written approval from SANY.

© Version 2026-03-09



Contact SANY Group



Download MySANY